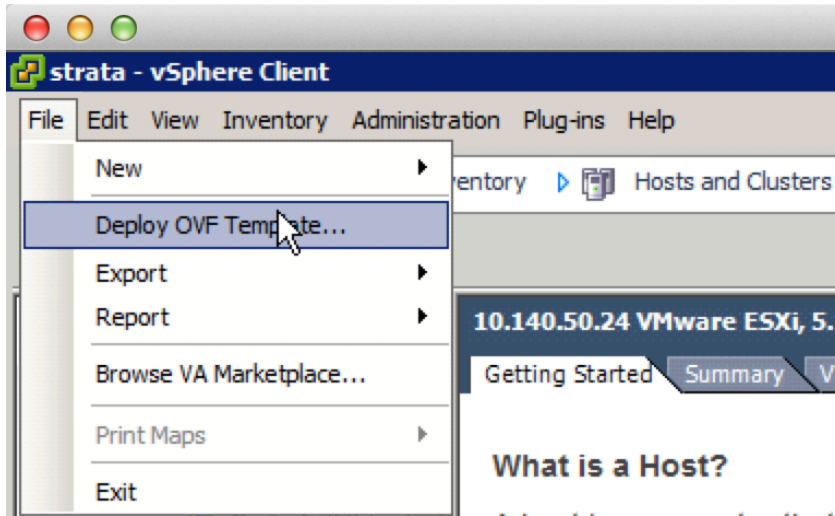


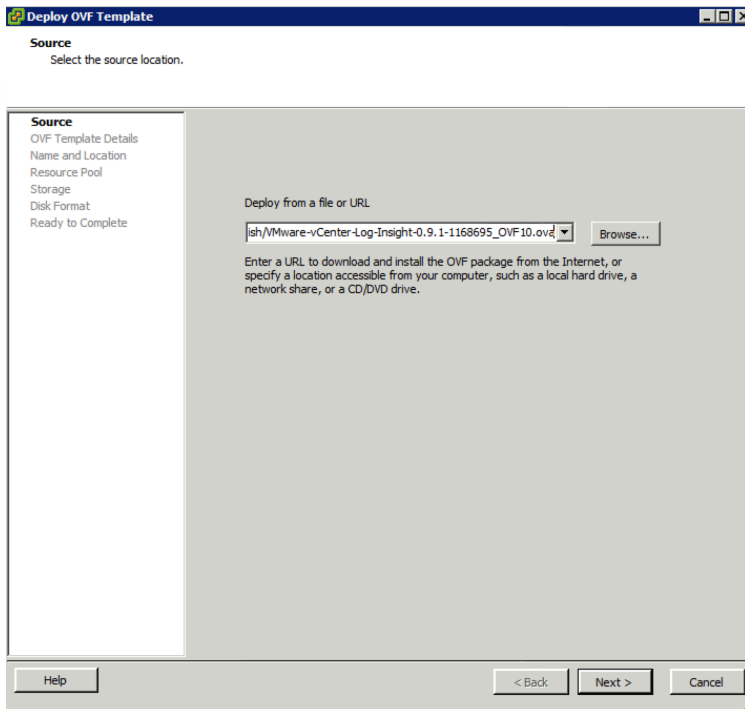
# Get Started with VMware vCenter Log Insight 1.0 Beta

## Installation

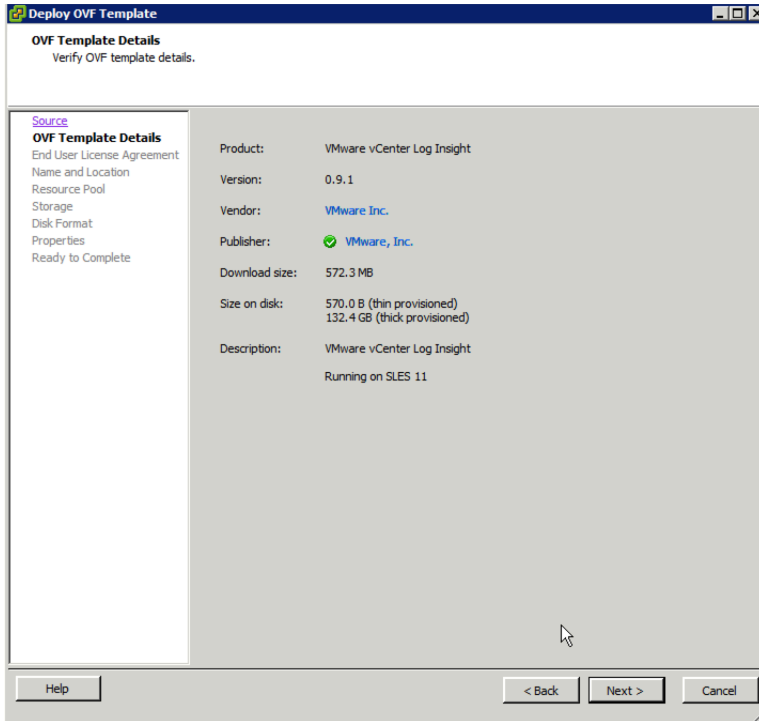
1. Click the File menu and select “Deploy OVF Template”.



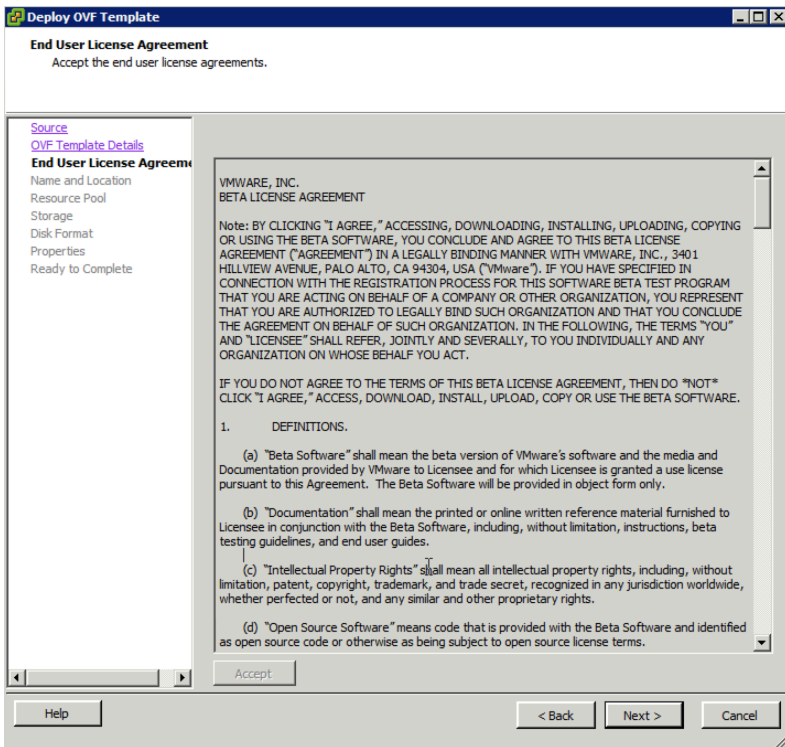
2. You can specify a URL to an ova file or a local ova file.



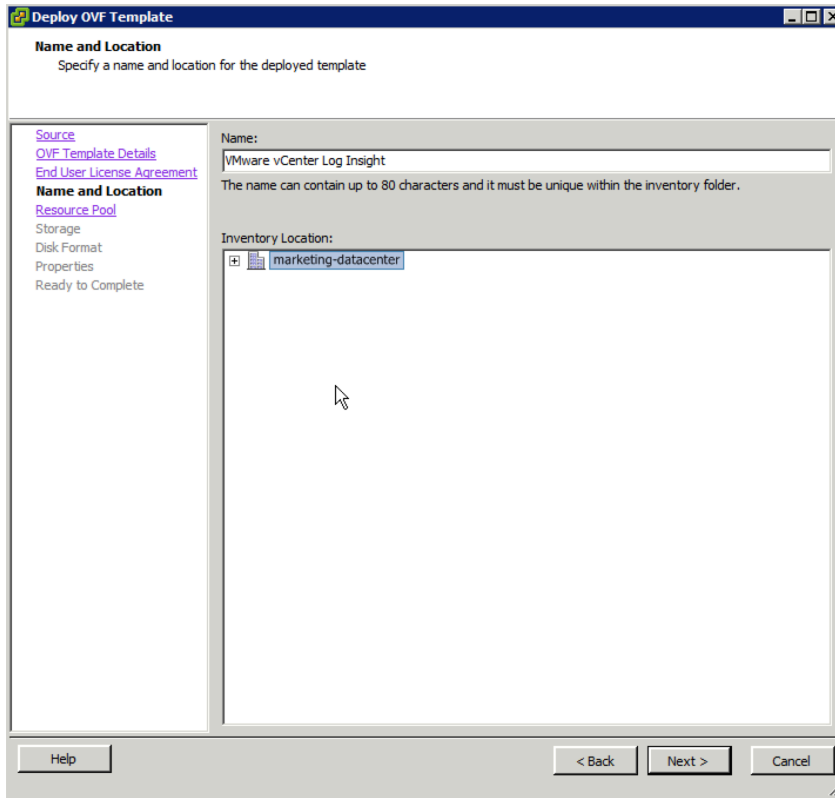
3. Here is the summary of the ova file once it is selected.



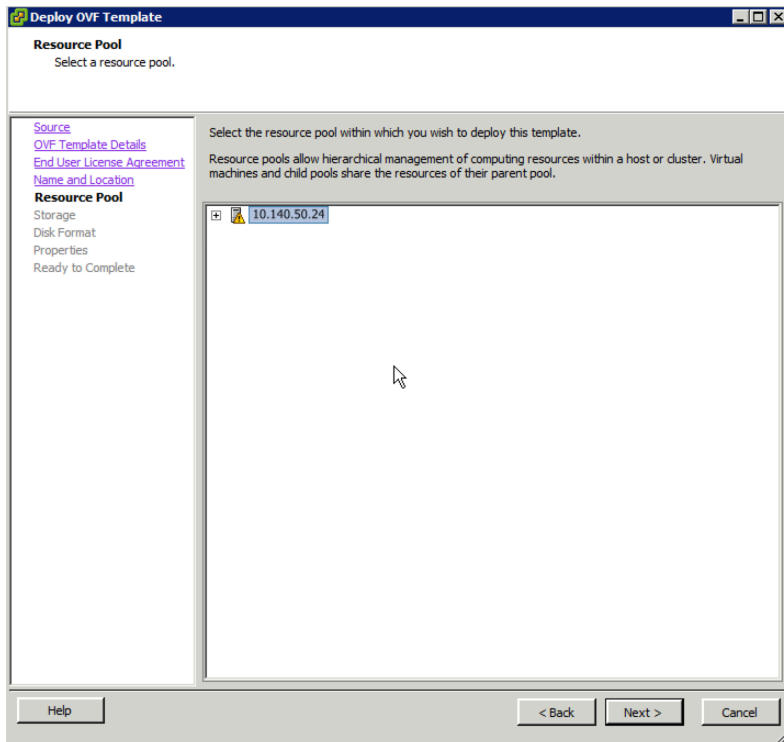
4. You'll have to accept the EULA before you can proceed.



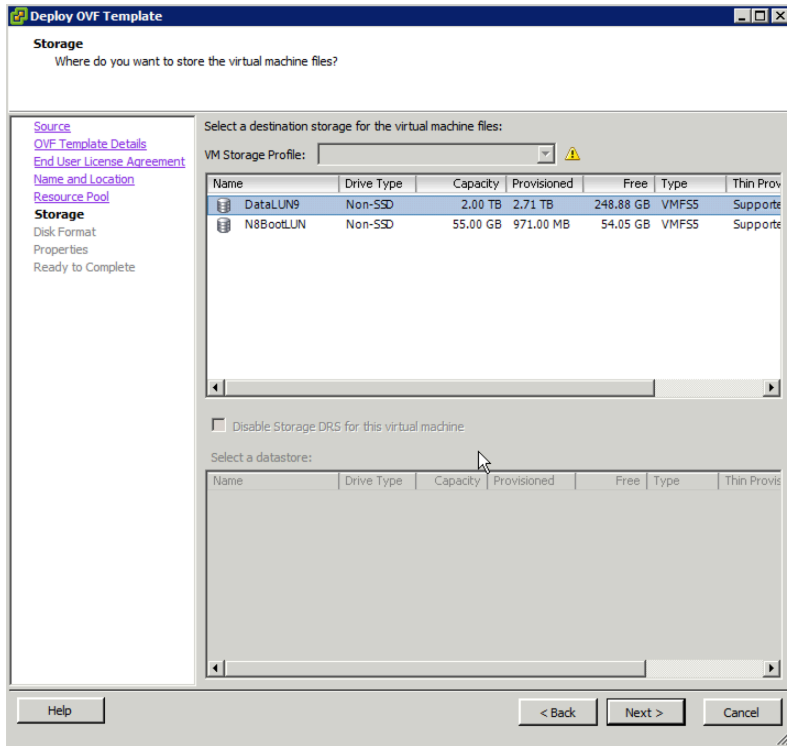
5. Then we need to select the VM name and the location where this VM is deployed.



6. Select the resource pool

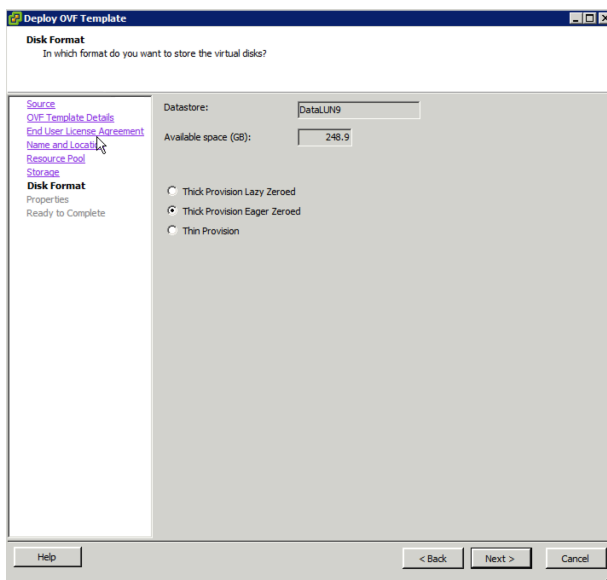


7. Select which data store you want to store the VM file.

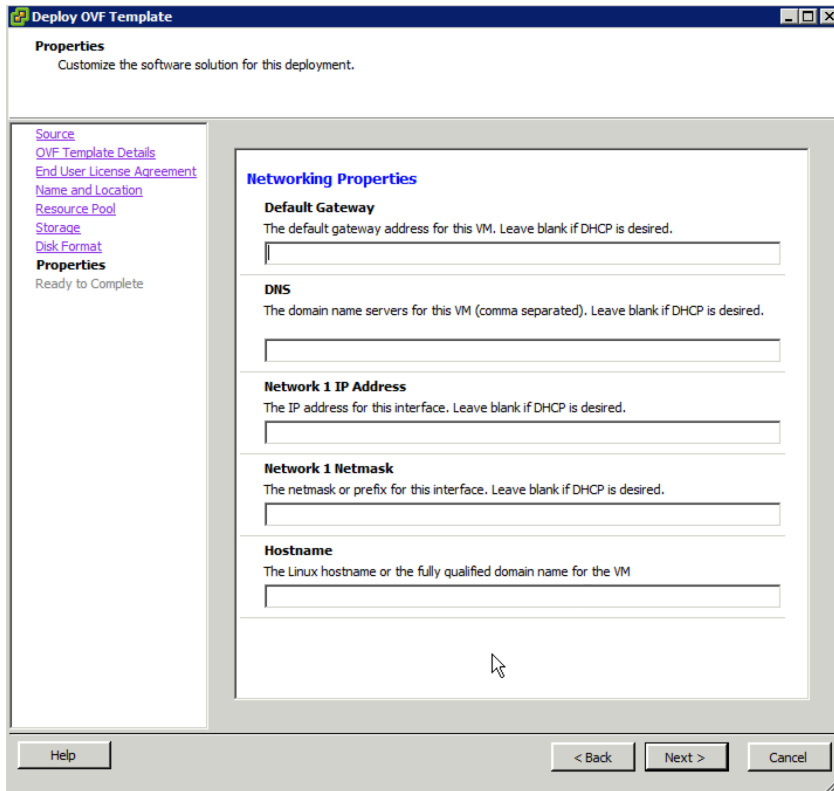


8. You also need to select the disk format you want to use: Thick Provision Lazy Zeroed, Thick Provision Eager Zeroed, and Thin Provision.

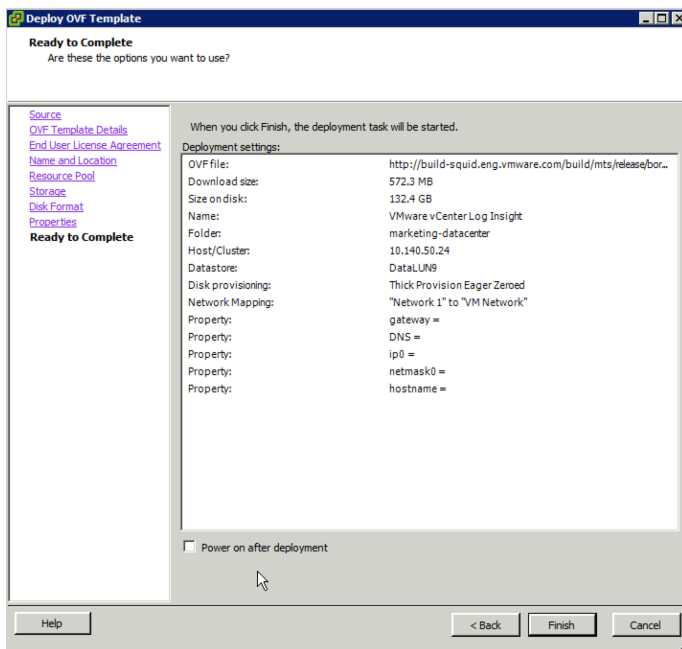
They each have its own pros and cons. Please see “ESXi and vCenter Server 5 Documentation > vSphere Virtual Machine Administration > Configuring Virtual Machines > Virtual Disk Configuration” for details.



9. You can configure the network at this time. By leaving them all blank, you use DHCP; otherwise, you can specify gateway, DNS, IP, and Netmask if you want to use static IP. You can specify hostname too.



10. At the end, you can review all details before you click "Finish".



## 11. Here is what you see after you finish installing

The screenshot displays the VMware vCenter Log Insight Summary page. The top navigation bar includes tabs for Getting Started, Summary, Resource Allocation, Performance, Tasks & Events, Alarms, Console, Permissions, Maps, and Storage Views. The Summary tab is active.

**General**

- Product: VMware vCenter Log Insight
- Version: 0.9.1 (0.9.1 Build 1168695)
- Vendor: VMware Inc.
- Guest OS: SUSE Linux Enterprise 11 (64-bit)
- VM Version: 7
- CPU: 2 vCPU
- Memory: 8192 MB
- Memory Overhead: 285.76 MB
- VMware Tools: Not running (3rd-party/Independent)
- IP Addresses:
- DNS Name:
- EVC Mode: N/A
- State: Powered Off
- Host: 10.140.50.24
- Active Tasks:
- vSphere HA Protection: N/A

**Resources**

- Consumed Host CPU: 0 MHz
- Consumed Host Memory: 0.00 MB
- Active Guest Memory: 0.00 MB
- Refresh Storage Usage
- Provisioned Storage: 140.60 GB
- Not-shared Storage: 132.38 GB
- Used Storage: 132.38 GB

Storage	Status	Drive Type
DataLUN9	Alert	Non-SSD

**Network**

Network	Type	Status
VM Network	Standard port group	OK

**VM Storage Profiles**

- VM Storage Profiles:
- Profiles Compliance:
- Refresh

**Commands**

- Power On
- Edit Settings
- Migrate
- Clone to New Virtual Machine
- Convert to Template

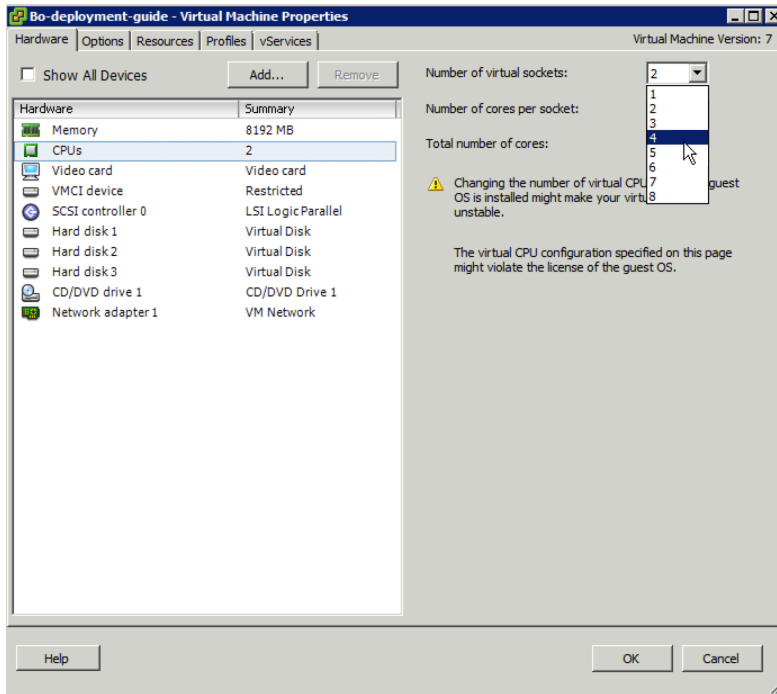
### Sizing and adding more resources

Before you power it on, you may want to increase the number of CPUs, the amount of memory and storage. By default, the VM has 2 CPUs, 8GB memory, and 140GB storage (among which 100GB is used by Log Insight).

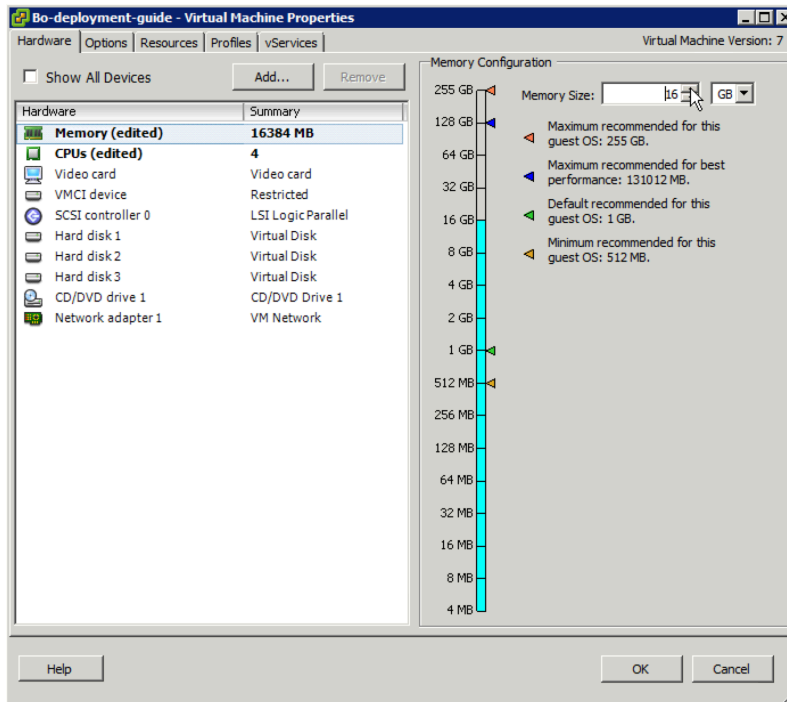
Please refer to “*Sizing your VMware vCenter Log Insight Instance*” for guidelines on how to determine how much resource (CPU, memory, storage) you need based on the number of ESXi hosts/log volume per day.

Let’s say you want to have 4 CPUs, 16GB memory and add additional 150GB storage. Here is how you do it.

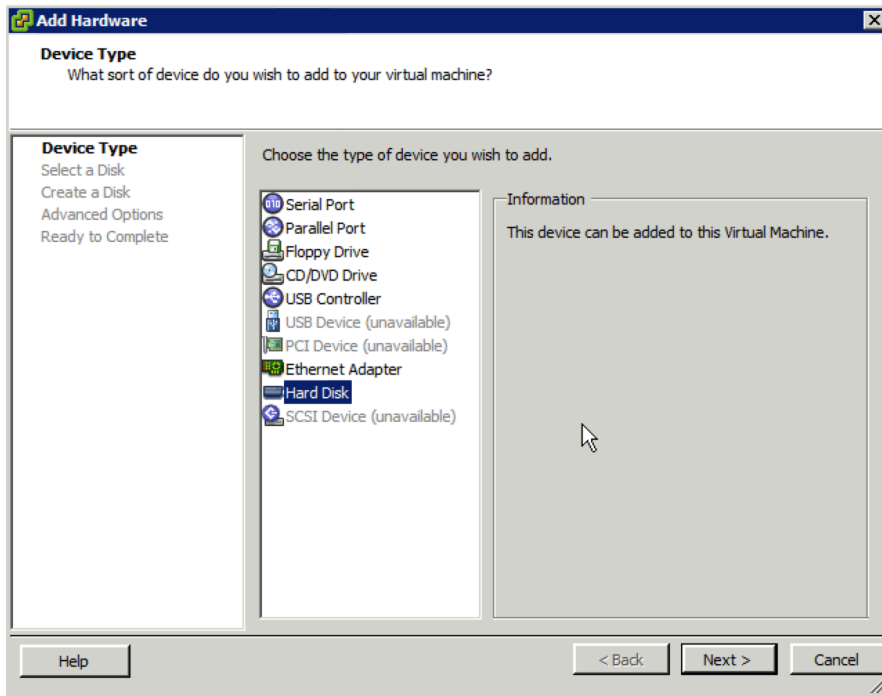
1. Select "Edit Settings" and change the number of CPU from 2 to 4.



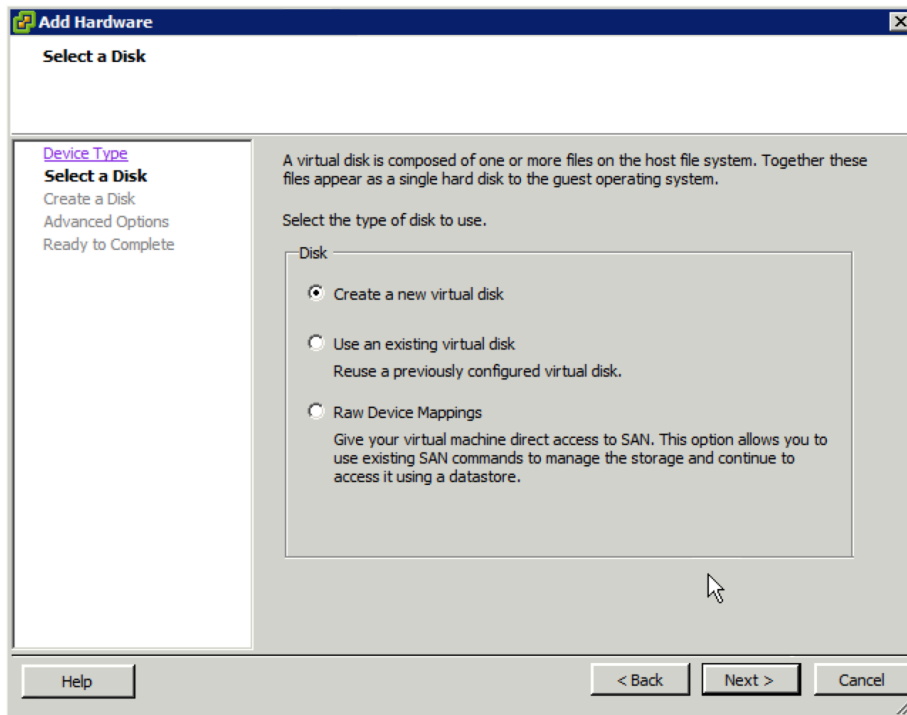
2. Change the amount of memory from 8GB to 16GB.



3. Select “Add...” on the top to add a hard disk

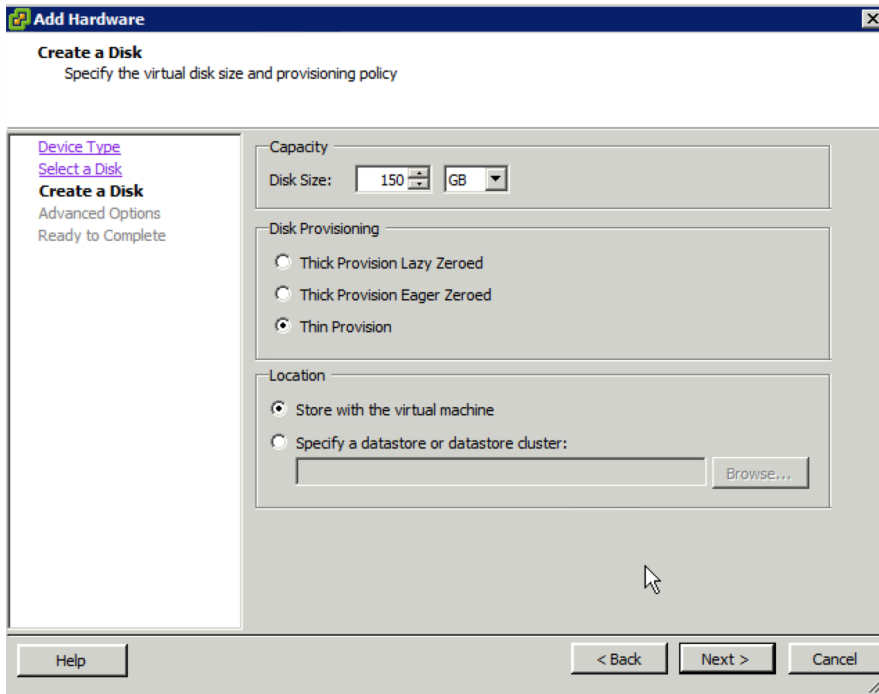


4. Select “Create a new virtual disk” if you don’t have an existing one

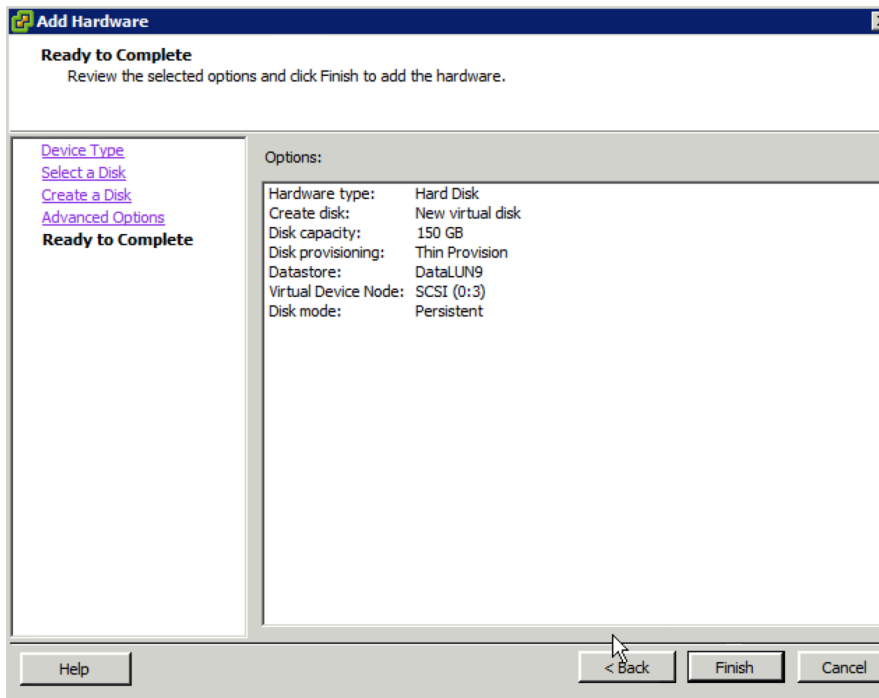




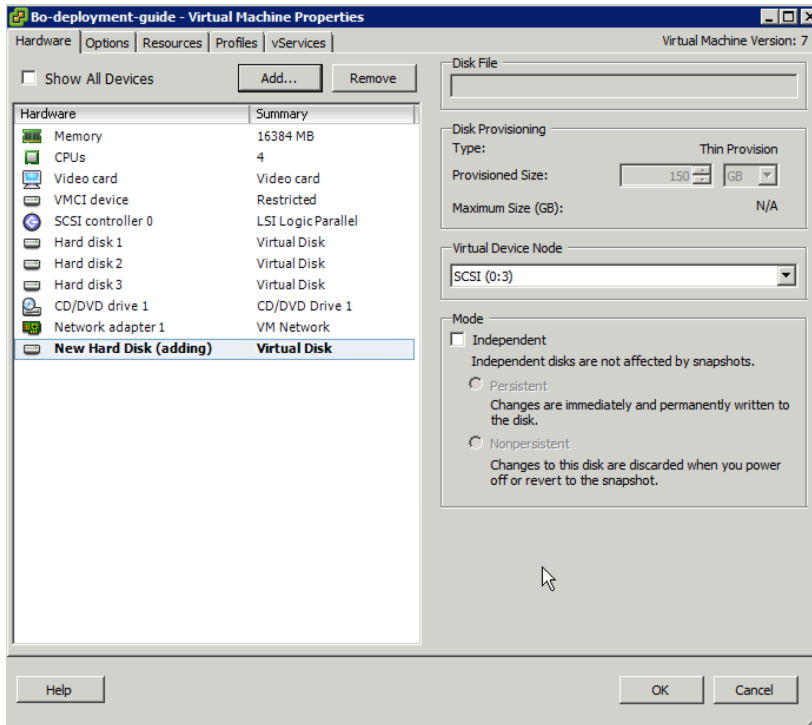
## 5. Specify the virtual disk size and provisioning policy



## 6. Review the storage details before you click "Finish"

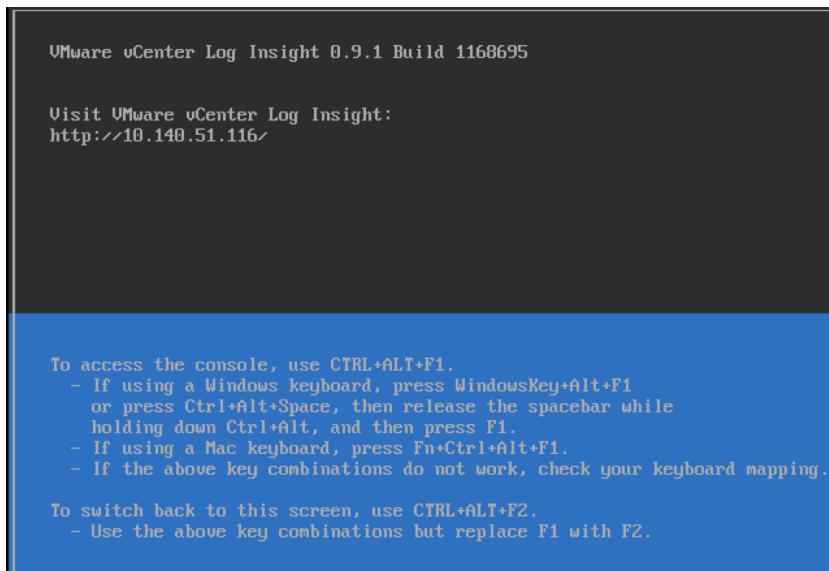


## 7. Done with adding 150GB storage



## 8. Power it on.

After several minutes, you'll see the following screen.



9. If you want to change the root password now, you can follow the on-screen instruction to switch to a console and change it.

The new root password has to be compliant to the security requirements. Before you change the default root password, SSH is disabled.

```
VMware vCenter Log Insight

Please use the console to change your root password. SSH is disabled until you c
hange the root password to something more secure.

The password complexity requirements are:
* Minimum of 8 characters
* Minimum of one upper, one lower, one digit, and one special character
* You cannot repeat the same character 4 times

localhost login: root
Password:
Password change requested. Choose a new password.
Old Password:
New password:
```

## Configuration

By now, you have finished the installation and the configuration of the virtual appliance. You just need to walk through a few settings to configure Log Insight before you are done.

1. Put the URL on the console screen into your favorite browser. A configuration wizard will be popped up.

### Setup

## Welcome to vCenter Log Insight

We'll walk through a few settings first. Note that any changes you make can be modified at a later date in the Administration page.

Click 'Next' to begin.

[Next](#)

2. Set up the admin password for Log Insight UI. This is different from the root password for the virtual appliance.

### Admin Credentials

Username	admin
Email	<input type="text"/>
New password	<input type="password"/>
Confirm new password	<input type="password"/>

[Back](#) [Save and Continue](#)

### 3. Input your license key

#### License

License Key:

License Status	<b>Active</b>
License Type	Site
Expiration Date	September 30, 2013 12:00:00 AM UTC

4. Enter email addresses where you want system notifications to send to. If you want to help us to improve our product, you can enable sending weekly trace data to VMware as part of the Customer Experience Improvement Program. Note that none of your personally identifiable information will be collected.

#### General Configuration

Enter email addresses where system notifications should be sent. These notifications are generated when important system events occur (e.g., when Log Insight is about to start rotating out data because the disk is full).

Email System Notifications To

#### Customer Experience Improvement Program

Once per week, vCenter Log Insight will send anonymized Trace Data to VMware via encrypted email. This information allows us to create the best possible product for you. VMware will use collected information to prioritize development resources towards features and fixes that are most valuable to our customers.

For details on Trace Data and how it is used, please see the Customer Experience Improvement section of the [Online Help](#).

Send weekly Trace Data to VMware as part of the Customer Experience Improvement Program

5. Time is very important for Log Insight since it accepts time series data as input. We recommend you to use NTP servers, either external or internal servers. Alternately, you can choose to sync the time with the ESXi host.

### Time Configuration

Specify a list of NTP servers to sync with or choose to sync time with the ESXi host.

Browser Time	Jun 10, 2013 5:37:55 PM UTC-07:00
Server Time	Jun 10, 2013 5:34:20 PM UTC-07:00 <small>Note: server time is displayed in the browser's time zone</small>
Sync Server Time With	<input checked="" type="checkbox"/> NTP server (recommended) <input type="checkbox"/> ESX/ESXi host
NTP Servers (comma-separated)	<input type="text" value="0.us.pool.ntp.org, 1.us.pool.ntp.org, 2.us.pool.ntp.org, 3.us.pool.ntp.org"/> <input type="button" value="Test"/> <small>Note: test may take up to 20 seconds per server</small>

6. You'll need to set up SMTP in order to enable outgoing email for scheduled query alerts and important system notifications.

### SMTP Configuration

SMTP settings are used to enable outgoing email for alerts and important system notifications.

SMTP Server	<input type="text" value="localhost"/>
Port	<input type="text" value="25"/>
SSL (SMTPS)	<input type="checkbox"/> <input type="button" value="?"/>
STARTTLS Encryption	<input type="checkbox"/> <input type="button" value="?"/>
Sender	<input type="text" value="loginsight@example.com"/> <input type="button" value="?"/>
Username	<input type="text" value="Optional"/>
Password	<input type="text" value="Optional"/>

7. If you want to collect tasks, events, and alarms from a vCenter server, you'll need to enter its credential here.

If you want to send Log Insight alerts to vCenter Operations Manager, you can enter its credential here too. Connect to vCenter Operations Manager to enable launch in context from the vCenter Operations Manager's UI and to enable forwarding Log Insight alerts to vCenter Operations Manager as events. Note that launch in context will only work with vCenter Operations Manager 5.7.1.

### VMware Integration Configuration

Integrate with vCenter to enable tasks and events to be sent to Log Insight. Integrate with vCenter Operations to enable sending Log Insight alerts to vCenter Operations.

#### vCenter Server ?

	Enabled	Hostname	Username	Password	
	<input checked="" type="checkbox"/>	strata-vc.eng.vmware.cc	root	.....	Test

[+ Add vCenter Server](#)

#### vCenter Operations Manager ?

	Enabled	Hostname	Username	Password	
	<input type="checkbox"/>				Test

8. If data archiving is important to you, you'll need to enable it and provide the NFS location. Log Insight will write the compressed data into the archive location.

### Storage Configuration

Data archiving provides a way to preserve old data that is rotated out of the system.

Archiving	
Enable Data Archiving	<input checked="" type="checkbox"/> <span>?</span>
NFS Location	<input type="text" value="nfs://path"/> <input type="button" value="Test"/> <span>?</span>

9. Restart the Log Insight and you are almost ready.

### Setup Complete

## Restart Required

Log Insight must restart in order to complete the setup process.



## Test and Configure ESXi hosts to send logs to Log Insight

Log Insight is shipped with a `configure-esxi` script. You can easily use it to configure some ESXi hosts to send logs to Log Insight, either for the purpose of testing or real production deployment.

1. Login in using the root password you reset and type “`configure-esxi`”. It shows you the usage of the script.

```
localhost:/storage/var/loginsight # configure-esxi
ERROR: -u flag must be specified
/opt/vmware/bin/configure-esxi -u '<username>' [-p '<password>'] -s <vcsrvr> [-h <esxi>[,<esxi>...]] [-t <syslog> [-f] | -x <syslog> | -r | -q]

--help                - Print a usage message briefly summarizing these command-line options, then exit.
-u, --username <username> - vCenter Server username. When entering your username please note that special characters may be interrupted by the terminal. As such, it is recommended to enclose your username in single quotes.
                        Examples: 'testuser', 'domain\testuser', 'testuser@domain'
-p, --password <password> - vCenter Server password. When entering your password please note that special characters may be interrupted by the terminal resulting in an incorrect password notification. As such, it is recommended to enclose your password in single quotes. If your password contains single quotes then they must be escaped with a back slash. For example, if your password is /John Doe's Pa$$word/ not including the forward slashes then it should be entered as /'John Doe\'s Pa$$word'/
-s, --server <vcsrvr>      - vCenter Server hostname.
-h, --host <esxi>[,<esxi>...] - List of ESXi hostname separate by comma (no space). Used if you want to target specific ESXi hosts within a vCenter Server instance. Can only be used in conjunction with -s. Please note that <esxi> must match exactly what is seen in <vcsrvr>. For example, if <vcsrvr> shows esx01.local then passing esx01 will not work. In addition, configure-esxi is only supported on ESXi 4.x and greater.
-t, --target <syslog>     - Configure a syslog target where <syslog> = <protocol>://<hostname>:<port> | <hostname>. Please note for ESXi 4.x if using <hostname> then udp://<hostname>:514 will always be set as it is the only supported configuration.
-x, --remove <syslog>    - Remove a syslog target where <syslog> = <protocol>://<hostname>:<port> | <hostname>. Please note that <syslog> must match exactly what -q returns. For example, if -q shows udp://loginsight01.local:514 then passing loginsight01.local will not work.
-r, --reload              - Reload syslog configuration. This may be required for certain versions for ESXi 5.x that stop logging to remote destinations if a remote destination becomes unavailable. For more information see http://kb.vmware.com/kb/2003127. Please note this flag only works for ESXi 5.x.
-q, --query               - Return current syslog settings.
-f, --force               - Force overwriting of ESXi 4.x settings. ESXi 4.x only allows a single remote syslog destination to be specified. If you wish to overwrite the existing entry then you must specify this flag. Can only be used in conjunction with -t.

localhost:/storage/var/loginsight #
```

Here are some examples to use `configure-esxi`.

```
>> configure-esxi -u root -s vcsrvr.mylab.example.com -q
```

Query `vcsrvr.mylab.example.com` for the syslog target of all the hosts connected to it

-----

```
>> configure-esxi -u root -s vcsrvr.mylab.example.com -t loginsight.mylab.example.com
```

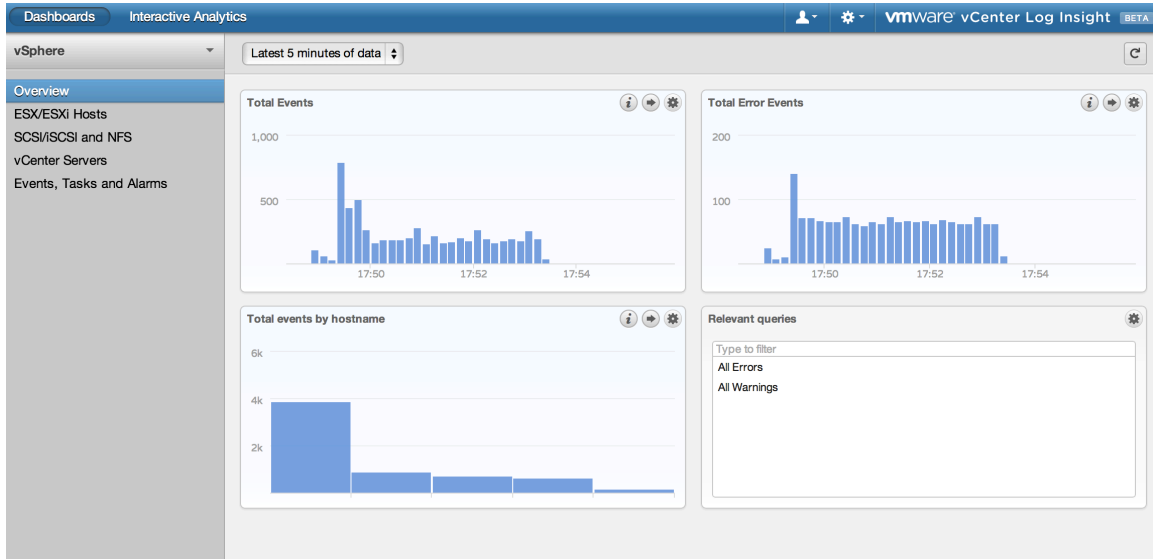
Configure all the ESXi hosts managed by `vcsrvr.mylab.example.com` to make `loginsight.mylab.example.com` their syslog target

-----

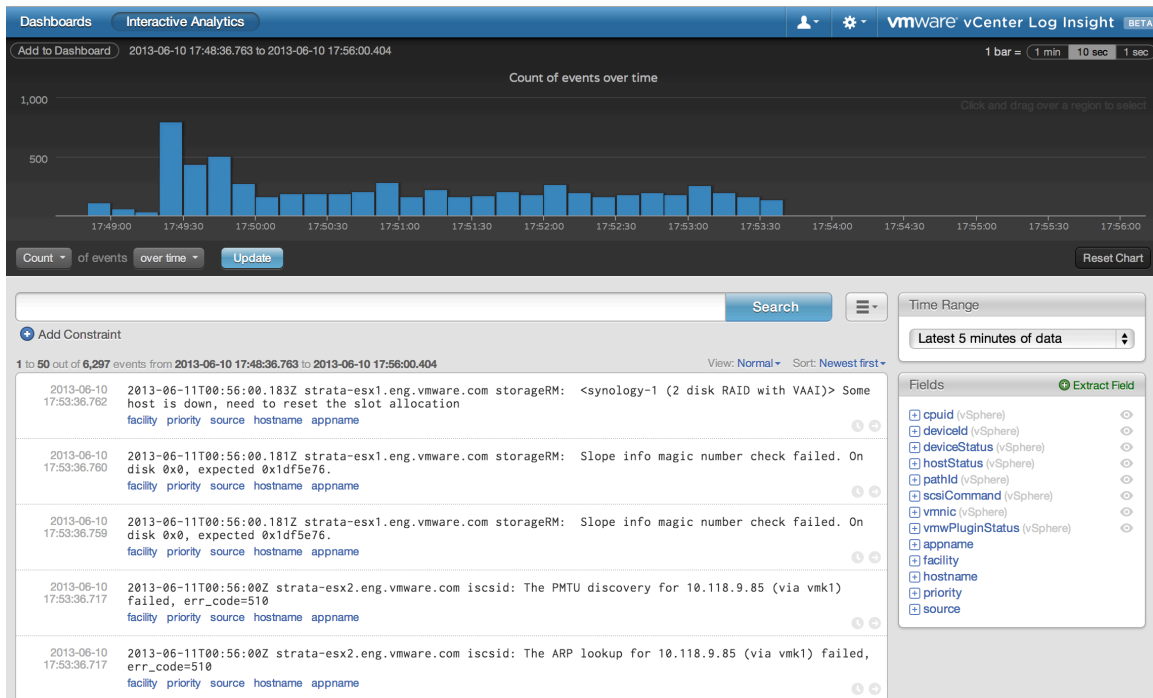
```
>> configure-esxi -u root -s vcsrvr.mylab.example.com -t loginsight.mylab.example.com -h esxi2.mylab.example.com
```

Set `loginsight.mylab.example.com` as the syslog target for `esxi2.mylab.example.com`

- Once you configure the ESXi hosts using the script, you can go to the URL and load the default vSphere content pack Overview page. You should see the log messages are flowing in.



- You can also go to the interactive analytics page and start to search and analyze your logs.



That's it. You are ready to go. Enjoy!