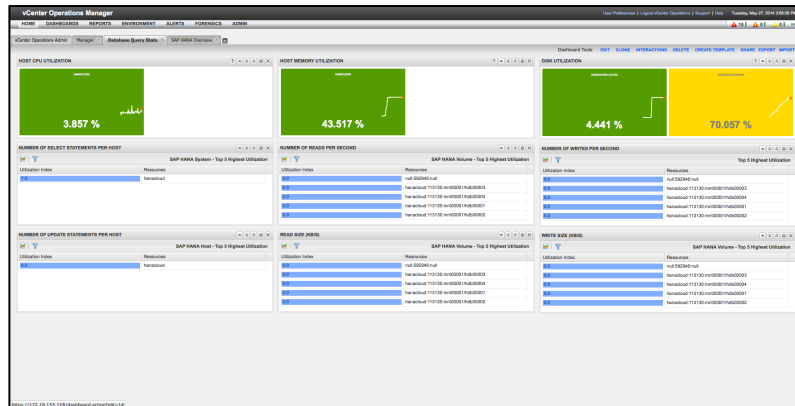
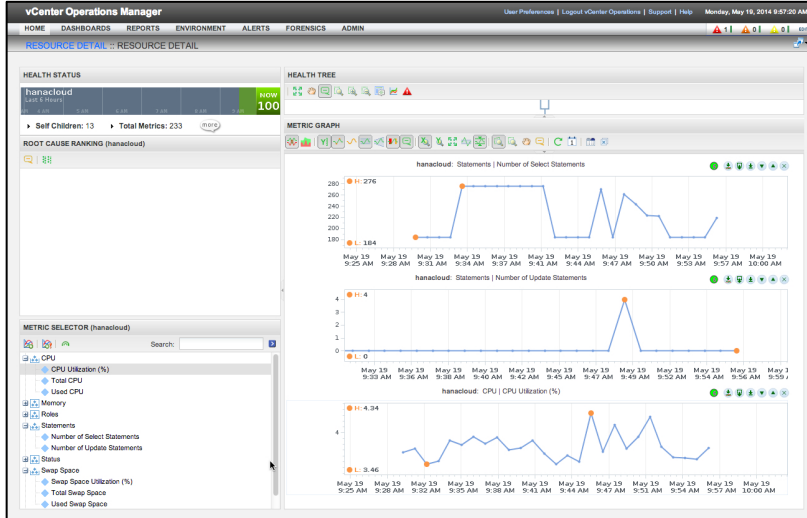


Blue Medora VMware vCenter Operations Manager Management Pack for SAP HANA

Customer Beta Drop 1 Overview

vC Ops MP for SAP HANA - Overview



SAP HANA integration with vCenter Operations Manager delivers automated correlation of performance, health, and availability data for SAP HANA workloads

Overview

- Makes available SAP HANA related performance, health, and availability metrics in vC Ops
- Includes Out-of-the-box dashboards, supermetrics, metrics, and metrics collections for SAP HANA
- Focused on SAP HANA workloads running on VMware vSphere
- Also provides useful info for SAP HANA workloads running on physical environments

Benefits

- Gain enterprise-wide visibility into SAP HANA workloads
- Greatly reduce Troubleshooting times, and simplify Security & Compliance Management
- Integration with between vC Ops and SAP HANA delivers reduced MTTI & MTTR

SAP HANA to VMware Relationship Mapping

vCenter Operations Manager User Preferences | Logout vCenter Operations | Support | Help Friday, June 06, 2014 9:17:46 AM

HOME DASHBOARDS REPORTS ENVIRONMENT ALERTS FORENSICS ADMIN 1 2 4

vCenter Operations Admin **SAP HANA Environment Overview** SAP HANA System Overview SAP HANA on VMware Layer View SAP HANA Host Overview Top SAP HANA Resources SAP HANA Tablespace Deepdive SAP HANA Heat Maps

Dashboard Tools: EDIT CLONE INTERACTIONS DELETE CREATE TEMPLATE SHARE EXPORT IMPORT

SAP HANA HEAT MAPS

Configuration: SAP HANA Service Memory Util

0 50 100

TOP 5 SAP HANA HOSTS BY CPU % UTILIZED

Utilization Index	Resources
7.836	hana-dev2
0.926	hana-dev3

TOP 5 SAP HANA HOSTS BYSELECT STATEMENTS PER SECOND

Utilization Index	Resources
3.195	hana-dev2
0.903	hanacloud
0.0	hana-dev3

TOP 5 SAP HANA HOSTS BY MEMORY % UTILIZED

Utilization Index	Resources
43.522	hana-dev2

SAP HANA RELATIONSHIP VIEW

STATUS FILTER: Health

SORT BY: A-Z

- SAP HANA SYSTEM (3 of 3)
- SAP HANA HOST (3 of 3)
- SAP HANA SERVICE (19 of 19)
- VIRTUAL MACHINE (4 of 7)
- HOST SYSTEM (8 of 8)
- CLUSTER COMPUTE RESOURCE (1 of 1)
- DATSTORE (24 of 24)

SELECTED RESOURCE METRICS

Search:

- Active Thread Count
- Blocked Transactions
- Expensive Statements Duration
- Expensive Statements per Second
- Idle Connections
- Inactive Thread Count
- Job Count
- New Connections per Second
- Running Connections
- Select Statements per Second
- Update Statements per Second

METRIC GRAPH

hana-dev2: Workload | Select Statements per Second

hana-dev2: Workload | Update Statements per Second

Comprehensive vC Ops monitoring of SAP HANA

The screenshot displays the vCenter Operations Manager interface for monitoring SAP HANA systems. The main dashboard is titled "SAP HANA System Overview" and provides a comprehensive view of system health, performance, and alerts.

SAP HANA SYSTEM DETAILS

PLATFORM	VERSION	LAST UPDATE
SUSE Linux Enterprise Server 11.1	1.00.73.00.389160 (NewDB100_REL)	2014-06-04 13:29:00.0

Host Status Summary

INACTIVE HOSTS	RUNNING HOSTS	TOTAL HOSTS
0	3	3

SAP HANA SYSTEM ALERTS SUMMARY

MEDIUM ALERTS (#)	HIGH ALERTS (#)
0	1

SAP HANA SYSTEM PERFORMANCE KPIS

PHYSICAL MEMORY UTILIZATION (%)	USED MEMORY	AVG. PROCESSOR CPU UTIL
21.2 %	GB 12.6	1 %
AVG DATABASE CPU UTIL	TOTAL CORES	BLOCK TRANSACTIONS
108 %	4	0
EXPENSIVE STATEMENTS	IDLE CONNECTIONS	RUNNING CONNECTIONS
-2	6	2
JOB COUNT	0	

SAP HANA SYSTEM APPLICATION OVERVIEW

Name	Last 24 Ho...	Health	Children H...	Alerts
SAP HANA...		100	■	0
SAP HANA...		100	■ ■	0
SAP HANA...		0		0

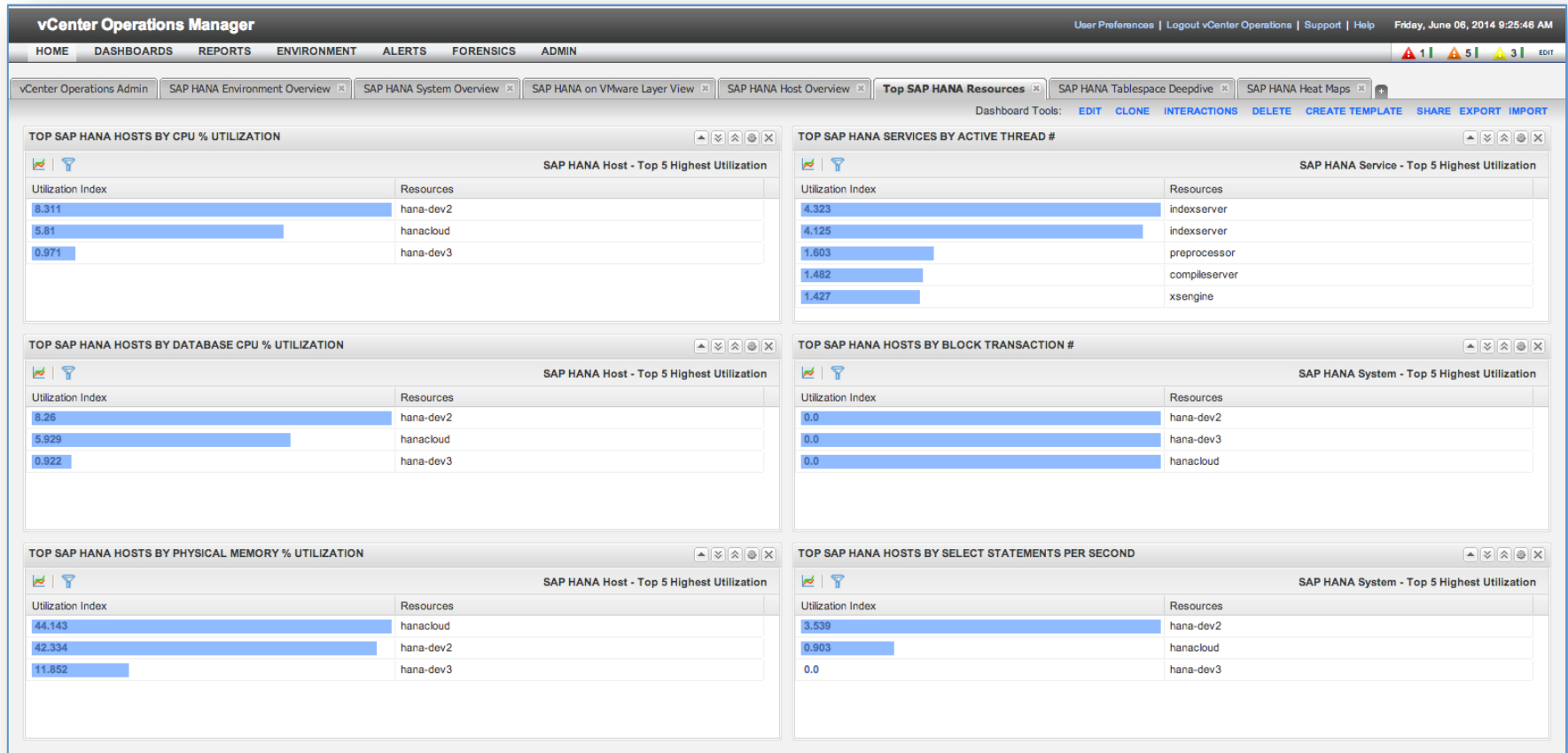
SAP HANA SYSTEM ALERTS

No alerts to display

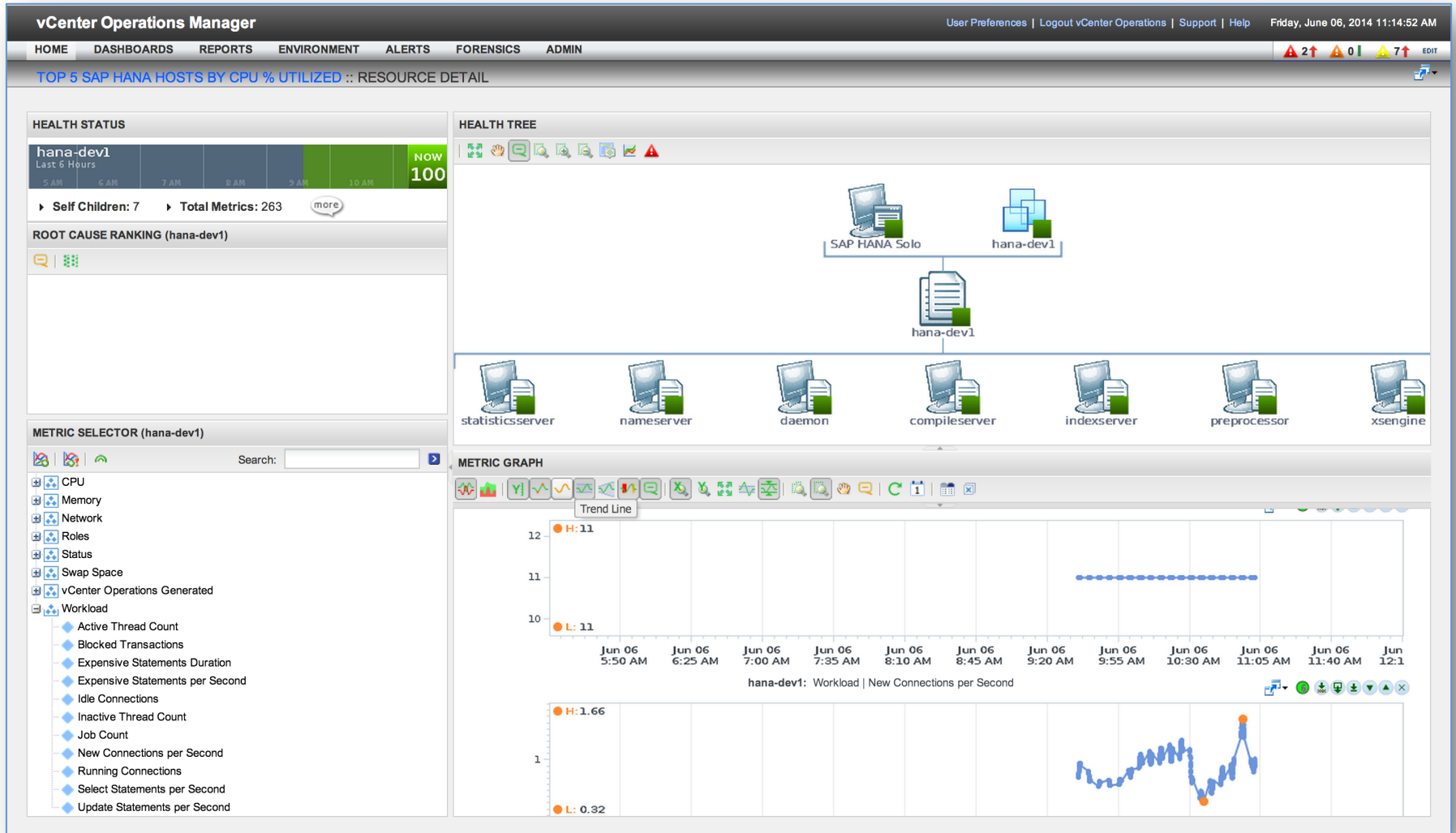
SAP HANA SWAP SPACE USAGE

Resource Name	Swap Space Utilization
hana-dev2	0 %
hana-dev3	0 %
hanacloud	4.3 %

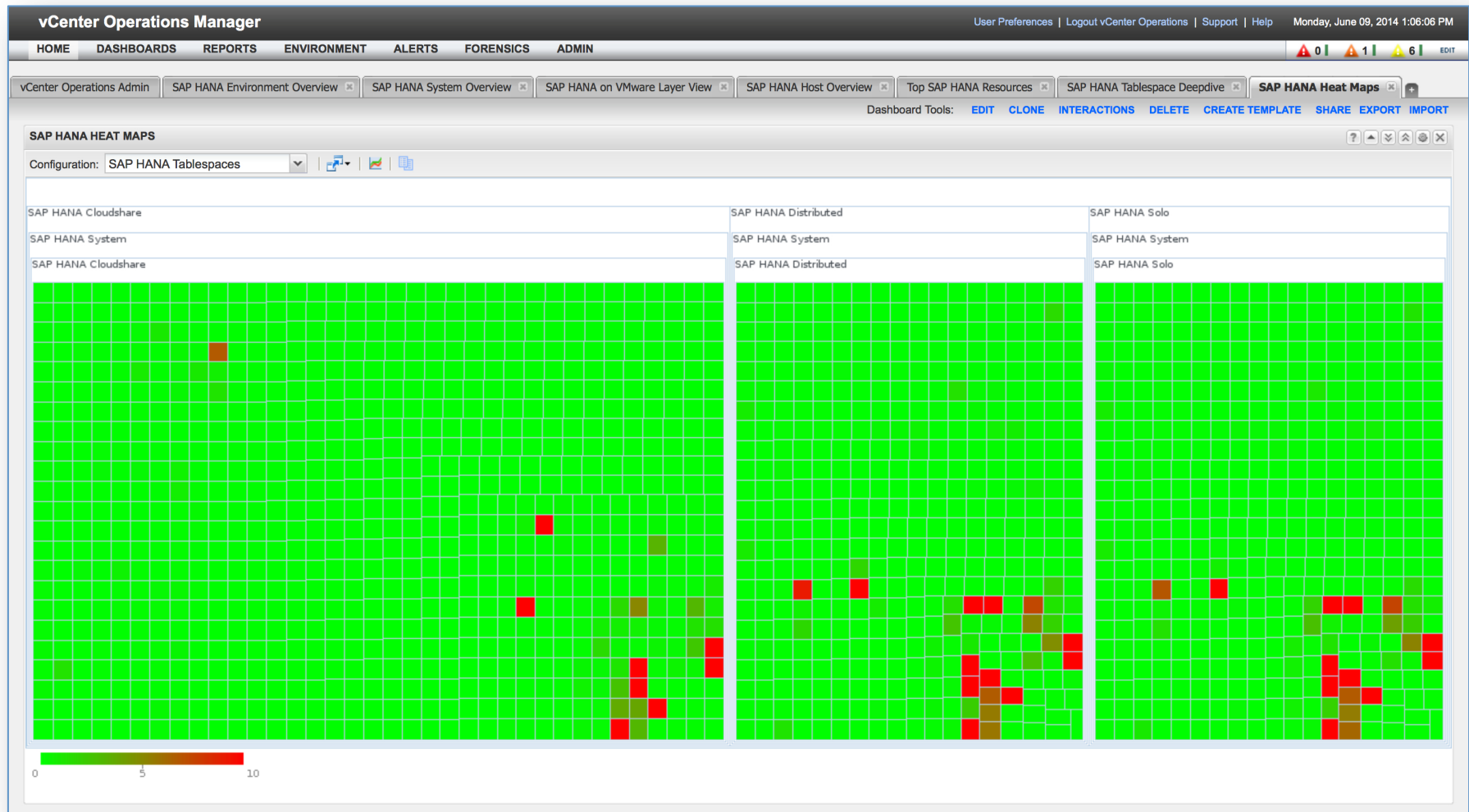
Identify Top SAP HANA resource consumers



Drill into hundreds of SAP HANA performance metrics



Isolate problem areas across the entire SAP HANA estate



Correlate performance across all of the HANA on VMware layers

vCenter Operations Manager User Preferences | Logout vCenter Operations | Support | Help | Monday, June 09, 2014 11:38:49 AM

HOME DASHBOARDS REPORTS ENVIRONMENT ALERTS FORENSICS ADMIN 0 1 7

vCenter Operations Admin | SAP HANA Environment Overview | SAP HANA System Overview | **SAP HANA on VMware Layer View** | SAP HANA Host Overview | Top SAP HANA Resources | SAP HANA Tablespace Deepdive | SAP HANA Heat Maps

Dashboard Tools: [EDIT](#) [CLONE](#) [INTERACTIONS](#) [DELETE](#) [CREATE TEMPLATE](#) [SHARE](#) [EXPORT](#) [IMPORT](#)

SELECT SAP HANA SYSTEM

Name	Health	ID
SAP HANA Cloudshare	100	110
SAP HANA Distributed	100	62
SAP HANA Solo	100	61

SAP HANA SYSTEM KPIS

- 31.5 % SAP HANA Solo: Memory Utilization
- 13.3 % SAP HANA Distributed: Memory Utilization
- 30.7 % SAP HANA Cloudshare: Memory Utilization
- 2.1 % SAP HANA Solo: Average Processor Utilization

SELECT SAP HANA HOST

Name	Health	ID
hana-dev3	100	64
hanacloud	100	111

SAP HANA HOST KPIS

hana-dev3

- 3 Caches | Number of Caches
- 0.0837 Workload | New Connections per Second
- Status | Status

No Data

SELECT RELATED VIRTUAL MACHINE

Name	Health	ID
hana-dev3	100	49

VIRTUAL MACHINE METRICS

hana-dev3

- 4.3 CPU Usage | Usage (%)
- 491,344 Memory | Host Demand (KB)
- 6,418.7 Network | Usage Rate(KBps)
- 1.8 Disk | Usage Rate(KBps)

SELECT RELATED VMWARE ESX HOST

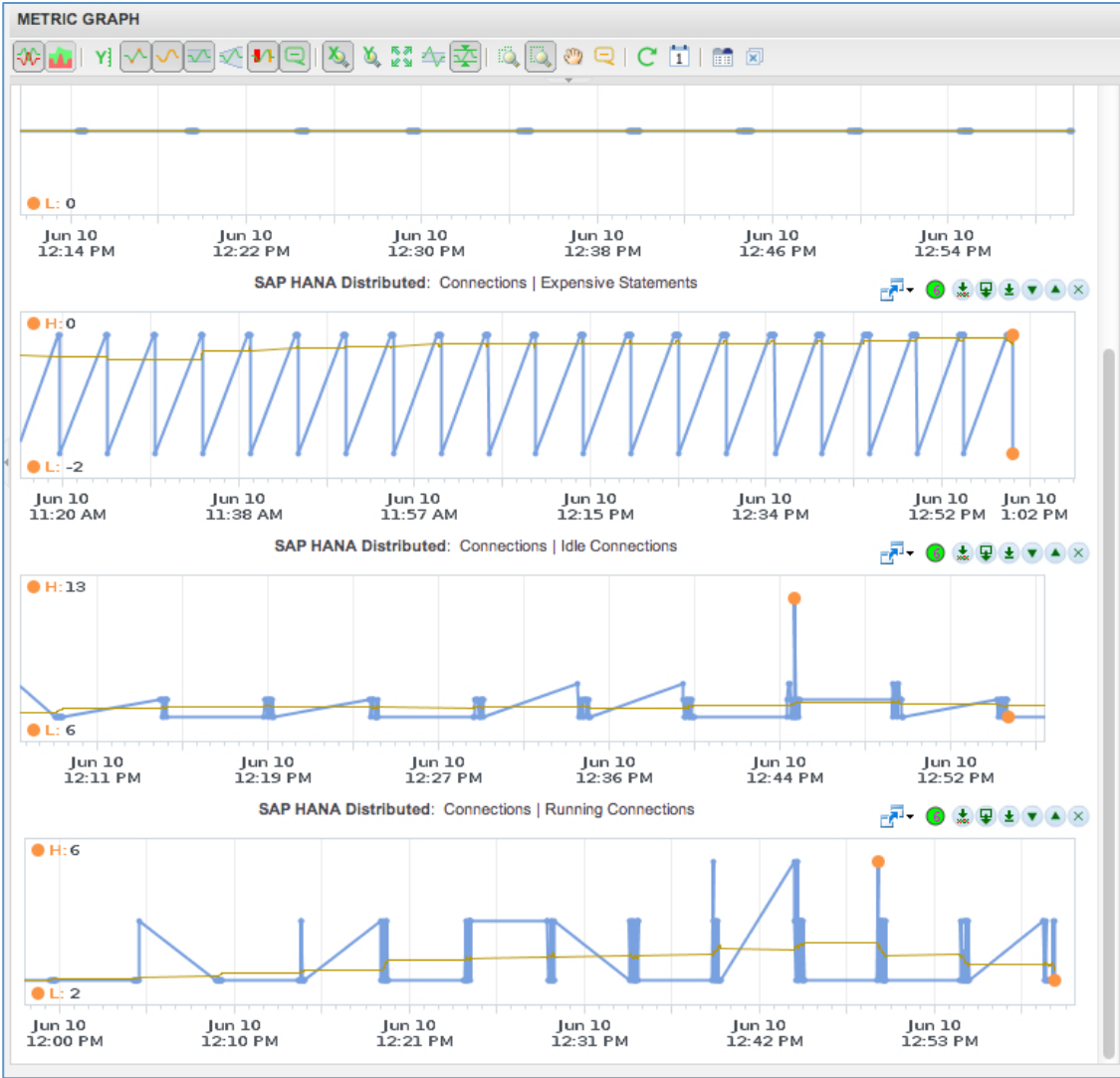
Name	Health	ID
loki.bluemedora.localnet	100	84

SELECT RELATED ESX HOST

loki.bluemedora.localnet

- 16.1 CPU Usage | Usage (%)
- 1 System | Powered ON
- 8,220 Network | Usage Rate(KBps)
- 1,412.3 Disk | Usage Rate(KBps)

Monitor Critical SAP HANA Performance Metrics



vC Ops MP for SAP HANA Rollout Plan

- Customer Beta Drop 1 – June 10th
 - SAP HANA System, SAP HANA Host, and SAP HANA Service ‘Resource Kinds’ and associated metrics
 - Relationship mapping
 - Between SAP HANA Objects
 - Between SAP HANA Host and VMware virtual machine
- General Public Release – Week of 6/30
 - Out-of-the-box (OOTB) dashboards
 - Add SAP HANA focused containers for:
 - SAP HANA System -> VMware VMs and VMware ESX Servers

Customer Beta Drop 1 Overview

- Introduces new SAP HANA-focused vC Ops Resource Kinds
 - SAP HANA System
 - SAP HANA Host
 - SAP HANA Service
- Includes Relationship Mapping functionality
 - Between SAP HANA resource kinds themselves
 - Between SAP HANA Host and VMware virtual machine
- Supports install via vApp or Standalone

vCOPs MP for SAPA HANA Technical Details

- Collects data from SAP HANA via JDBC connection
- Management Pack requires a Role with read-only permissions to the SAPA HANA statistics server
 - Refer to [SAP HANA Doc](#) for more details on creating the role

vCOPs MP for SAPA HANA Pre-requisites

- VMware vC Ops Enterprise Edition
 - v5.8+

- SAP HANA
 - SP6+

How to request access to the beta

- ⊕ Request beta at beta@bluemedora.com
- ⊕ Contact us for more info:



LinkedIn: <http://www.linkedin.com/company/744031>



Facebook: <https://www.facebook.com/pages/Blue-Medora-LLC/159103284124046>



Twitter: <https://twitter.com/bluemedora>



Email: info@bluemedora.com