

vSphere 6.7 Quick boot

vSphere 6.7 quick boot is new feature which is integrated with update manager. When we performing patching activities with earlier versions of vSphere most of the time we need to reboot the ESX hosts. This is very painful because normally it will take more than 5 minutes to reboot hardware server. Also sometimes we may need to login using ILO\BMC\IDRAC and check the boot status.

With the version 6.7 we can configure quick boot of ESX hosts. This feature will allow us to reboot only the hypervisor without rebooting ESX's hardware.

Requirements of this feature-

This feature will not work with all the hardware servers. We can follow below link to get the compatible hardware models.

[Dell servers](#)

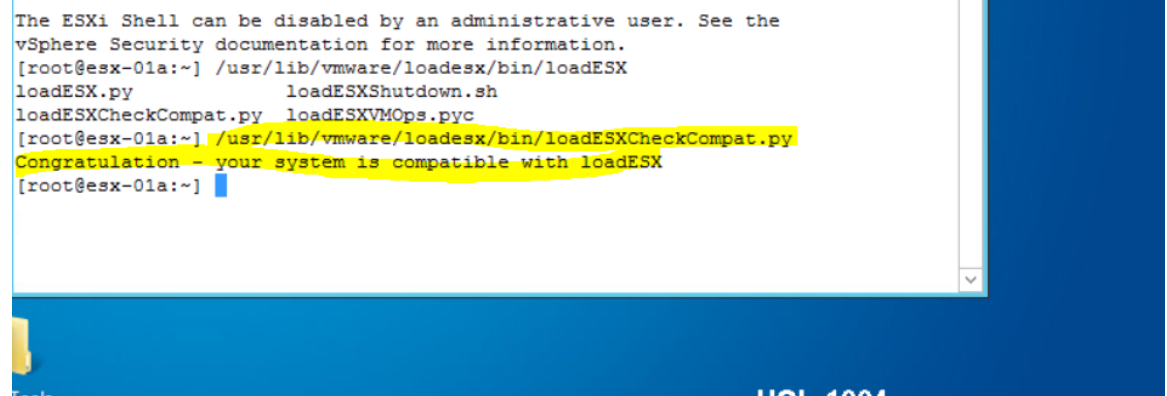
[HP Servers](#)

How to check the compatibility of your server-

We can run

`/usr/lib/vmware/loadesx/bin/loadESXCheckCompat.py`

And check the compatibility of our server with quick boot.



```
The ESXi Shell can be disabled by an administrative user. See the
vSphere Security documentation for more information.
[root@esx-01a:~] /usr/lib/vmware/loadesx/bin/loadESX
loadESX.py          loadESXShutdown.sh
loadESXCheckCompat.py loadESXVMOps.pyc
[root@esx-01a:~] /usr/lib/vmware/loadesx/bin/loadESXCheckCompat.py
Congratulation - your system is compatible with loadESX
[root@esx-01a:~]
```

How to configure this feature

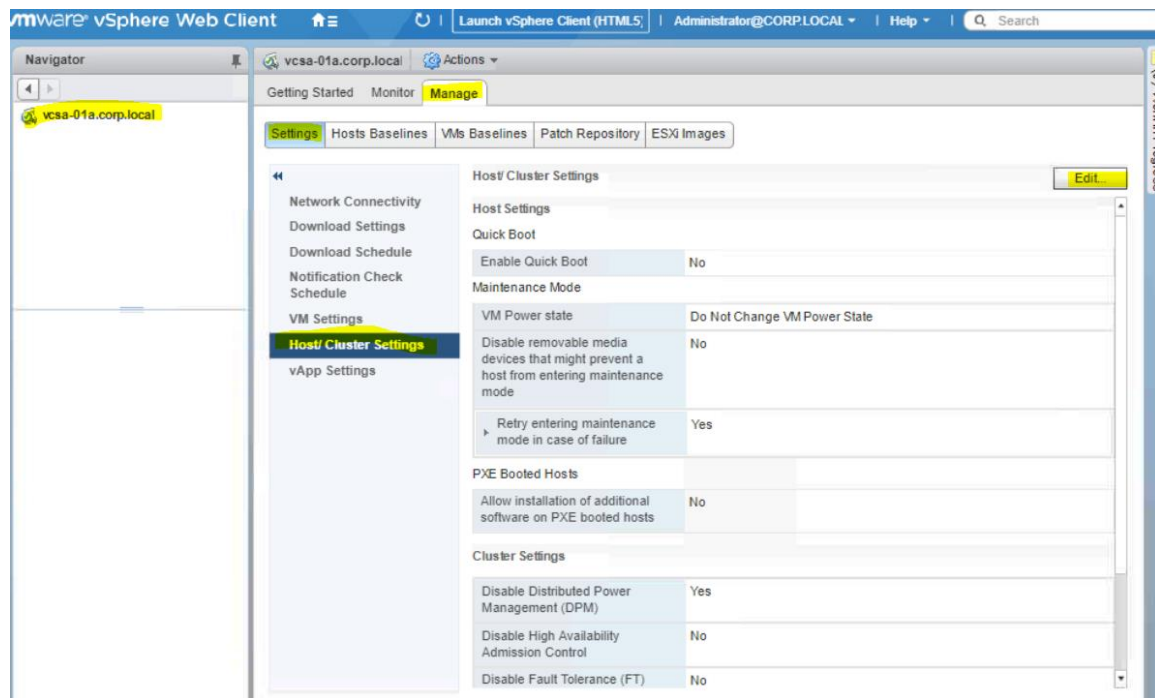
1. login to your vCenter web client

Go to the update manager

Select Manage

Select Settings

Click on Edit



Enable quick boot

vcsa-01a.corp.local - Edit Host/ Cluster Settings

Host Settings - Quick Boot

☒ Enable Quick Boot ⓘ

Host Settings - Maintenance Mode

Before host remediation, hosts might need to enter maintenance mode. Virtual machines and virtual appliances must be shut down or migrated. To reduce the host remediation downtime, you can select to shut down or suspend the virtual machines and appliances before remediation from the drop-down menu below.

VM Power state: Do Not Change VM Power State ▾

☐ Temporarily disable any removable media devices that might prevent a host from entering maintenance mode.

☒ Retry entering maintenance mode in case of failure

Retry delay: 5 ▴ ▾ minutes ▾

Number of retries: 3 ▴ ▾

Host Settings - PXE Booted Hosts

☐ Allow installation of additional software on PXE booted hosts

Cluster Settings

Certain features might need to be temporarily disabled for cluster updates to succeed. These features will be automatically re-enabled when remediation is complete.
Update Manager does not remediate hosts on which the features are enabled.

Temporarily disable:

☒ Distributed Power Management (DPM)

☐ High Availability Admission Control

☐ Fault Tolerance (FT)

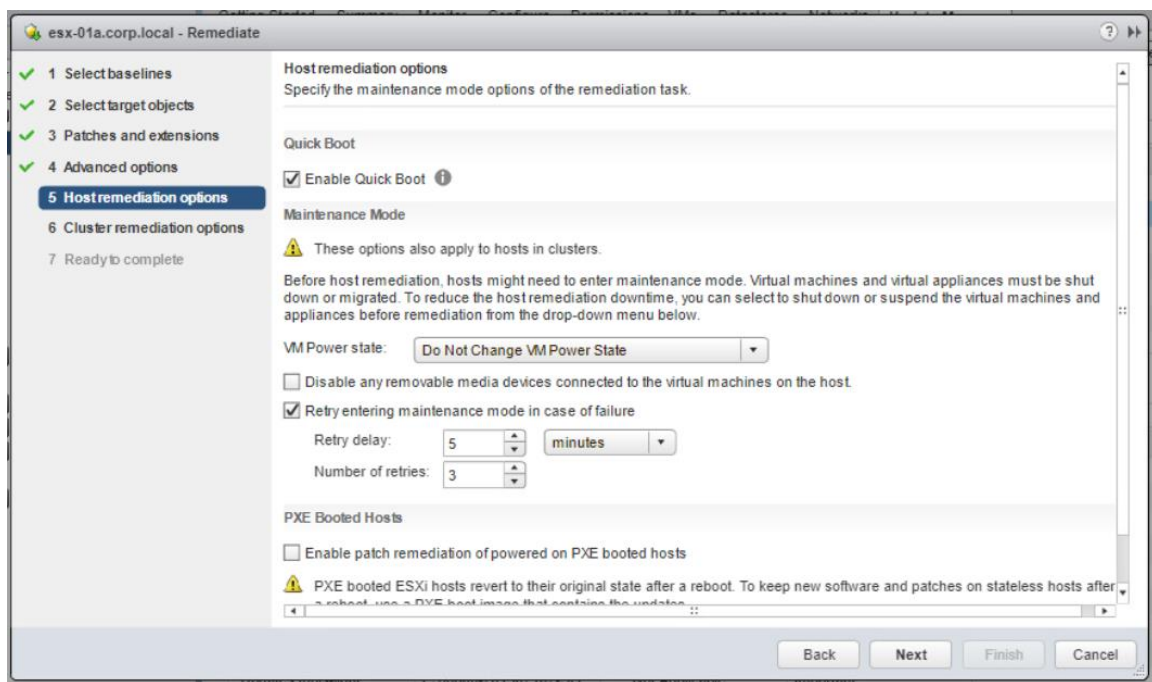
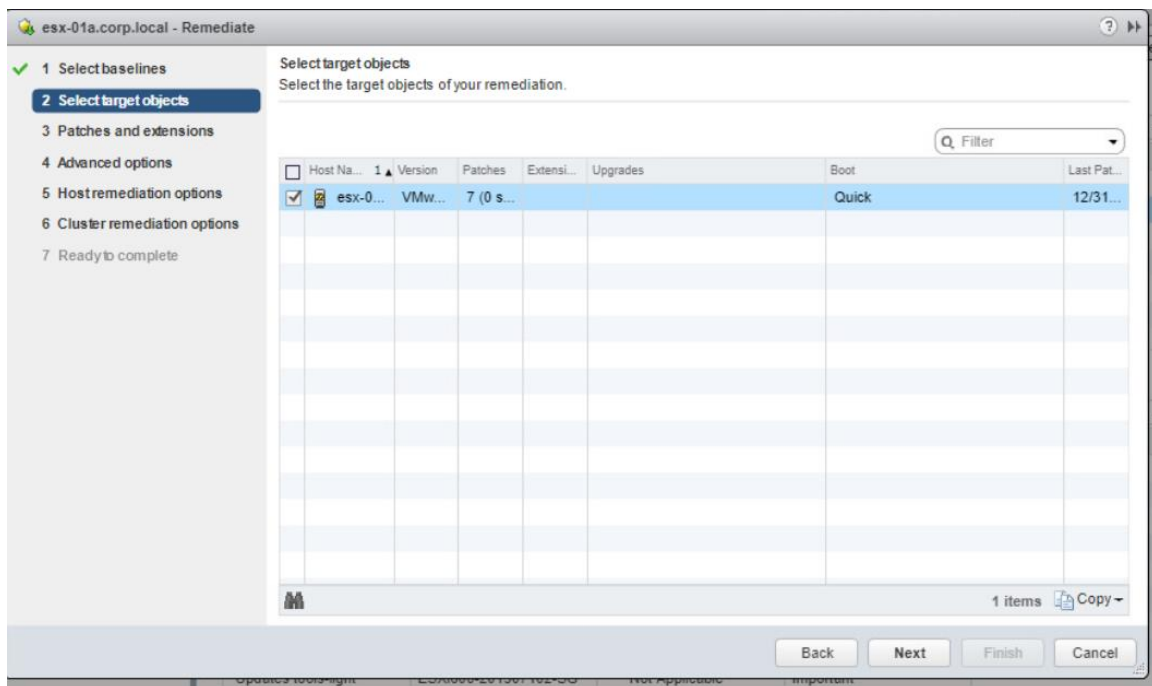
ⓘ To ensure that FT can be re-enabled you should remediate all hosts in a cluster with the same updates at the same time. See the documentation for more details.

☐ Enable parallel remediation for hosts in cluster

☐ Migrate powered off and suspended VMs to other hosts in the cluster, if a host must enter maintenance mode

Now we are going to remediate one of my esx host.

From the target host we can see quick boot is enable on this



I used VMware hol HOL-1904-01-SDC-HOL to test this feature

Reference links

<https://kb.vmware.com/s/article/52477>