

Where in the Registry is the the Excel add-in found?

Modified on: Wed, 29 Jul, 2015 at 9:53 PM

Created: 28.04.2014

Last updated: 29.07.2015

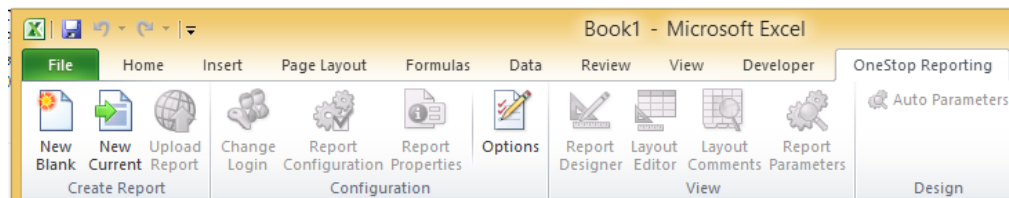
Applies to: OSR Designer/Player

Version(s): All versions

Introduction

The OSR applications **make use of Registry keys to determine which database server to communicate with** (<http://support.onestopreporting.com/solution/articles/1000019920-registry-keys>) for integrations, licenses, users, data connections etc. Users of OSR Designer and Player need the following values in their Windows Registry in order for Excel to show the toolbar. In addition there is secondary add-in, OSRFunctions, for formula values in cells/columns.

The Excel COM add-in (ribbon toolbar)



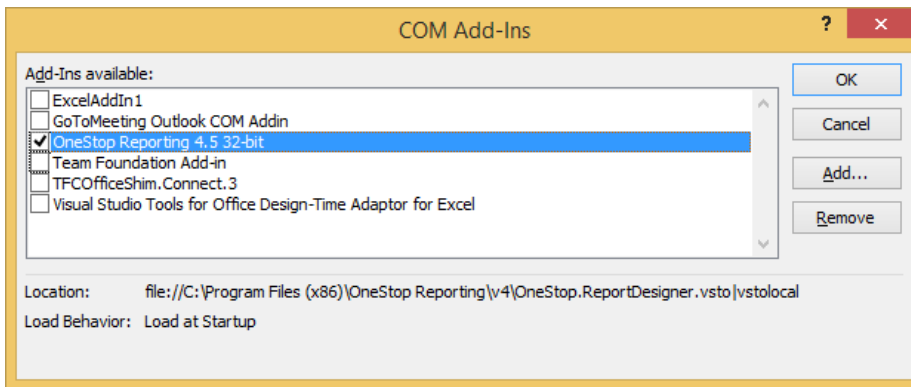
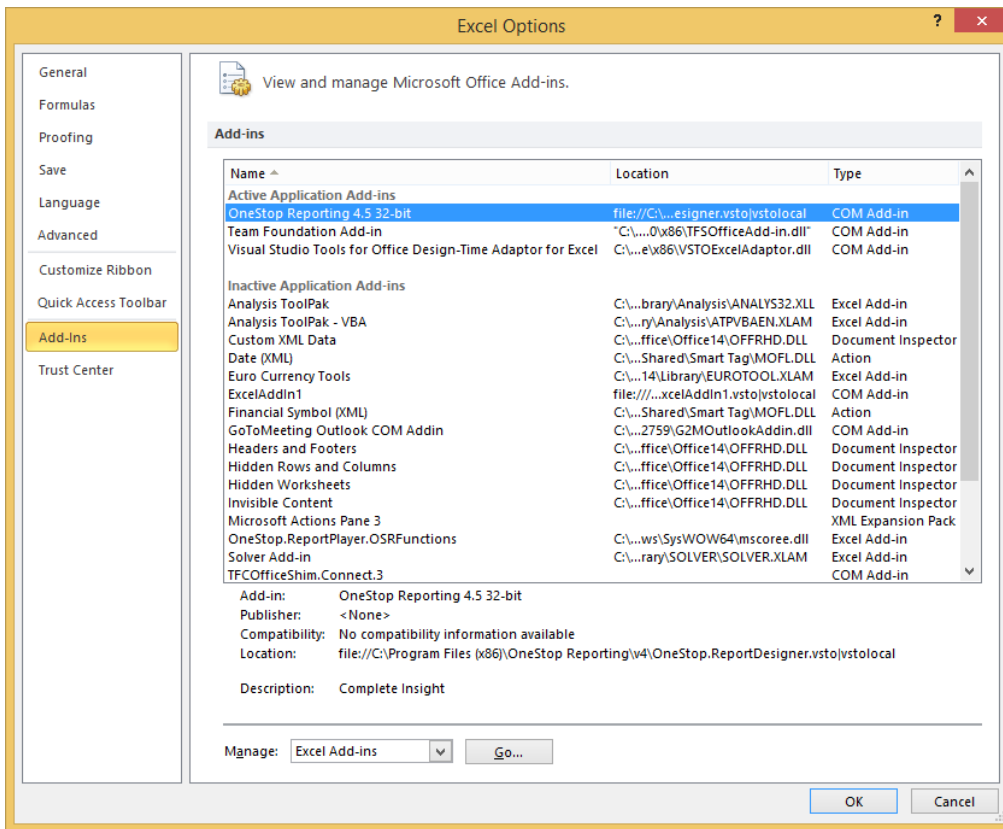
a. For 64-bit versions of Excel:

```
[HKEY_LOCAL_MACHINE\SOFTWARE\Microsoft\Office\Excel\Addins\OneStop.ReportDesigner]
"Manifest"="file:///C:/Program Files/OneStop Reporting/v4/OneStop.ReportDesigner.vsto|vstolocal"
"Description"="Excel-based reporting like you have never seen it before!"
"LoadBehavior"=dword:00000003
"FriendlyName"="OneStop Reporting 4.0"
```

b. For 32-bit versions of Excel, regardless of Windows' bitness (64-bit and 32-bit):

```
[HKEY_LOCAL_MACHINE\SOFTWARE\Wow6432Node\Microsoft\Office\Excel\Addins\OneStop.ReportDesigner]
"Manifest"="file:///C:/Program Files/OneStop Reporting/v4/OneStop.ReportDesigner.vsto|vstolocal"
"Description"="Excel-based reporting like you have never seen it before!"
"LoadBehavior"=dword:00000003
"FriendlyName"="OneStop Reporting 4.0"
```

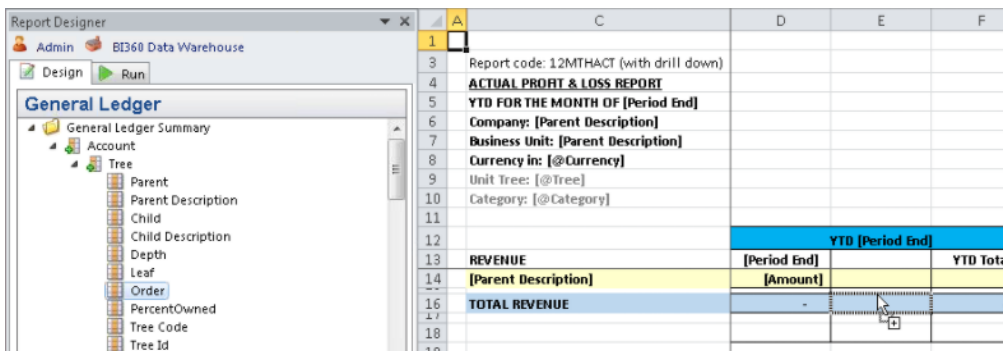
The COM add-in should appear in Excel's Options under add-ins:



OneStop.ReportPlayer.OSRFunctions Excel add-in

In order for Excel cells to show the field names and formulas the DLL needs to be registered under Classes\CLSID. If the add-in is not registered the cells will display "#NAME?" where you would expect to see placeholders like "Amount", "Name" and similar while in Design mode.

The illustration below shows a well functioning installation, when the template is in design mode the cells should contain placeholders such as "[Amount]":

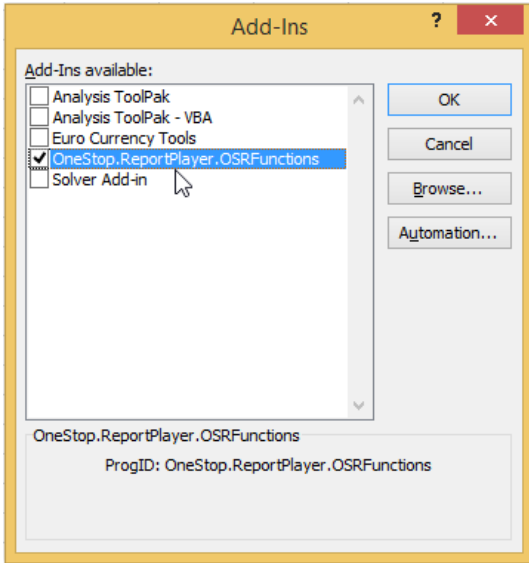


Where in the Registry should this DLL entry be located?

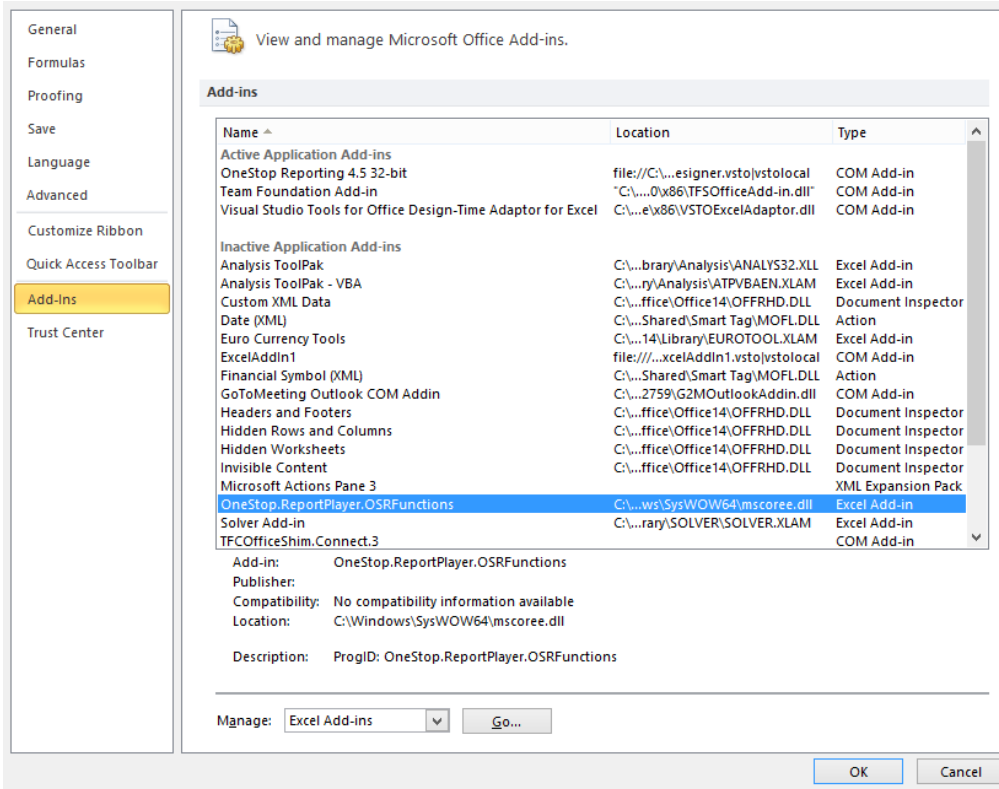
- a. For 32-bit versions of Excel: [HKEY_CLASSES_ROOT\Wow6432Node\CLSID\{74B6B2D2-F28A-4F03-BB6A-6B5DA5306460}]
- b. For 64-bit versions of Excel: [HKEY_CLASSES_ROOT\CLSID\{74B6B2D2-F28A-4F03-BB6A-6B5DA5306460}]

NOTE: This value can only be registered in one branch that matches Excel's bitness, otherwise you may experience it not showing up in Excel.

When the DLL is properly registered it will appear in Excel's Options menu under add-ins, specifically Excel add-ins and not COM add-ins.



It does not have to appear in the active list to be installed properly, unlike the COM add-in as shown here.



mscoree.dll reference for OSRFunctions

In addition to the location itself, there is a second difference in the reference to the "mscoree.dll".

- The 64-bit version of the key should refer to "C:\Windows\system32\mscoree.dll".
- The 32-bit version of the key should refer to "C:\WINDOWS\SysWOW64\mscoree.dll".

Registry samples for OSRFunctions

NOTE: Please, also see the attached .reg-files.

32-bit:

```
Windows Registry Editor Version 5.00

[HKEY_CLASSES_ROOT\wow6432Node\CLSID\{74B6B2D2-F28A-4F03-BB6A-6B5DA5306460}]
@="OneStop Reporting Functions"

[HKEY_CLASSES_ROOT\wow6432Node\CLSID\{74B6B2D2-F28A-4F03-BB6A-6B5DA5306460}\Implemented Categories]

[HKEY_CLASSES_ROOT\wow6432Node\CLSID\{74B6B2D2-F28A-4F03-BB6A-6B5DA5306460}\Implemented Categories\{62C8FE65-4EBB-45e7-B440-6E39B2CDBF29}]

[HKEY_CLASSES_ROOT\wow6432Node\CLSID\{74B6B2D2-F28A-4F03-BB6A-6B5DA5306460}\InprocServer32]
"Assembly"="OneStop.OSRFunctions, Version=3.3.0.0, Culture=neutral, PublicKeyToken=null"
"CodeBase"="file:///C:\\Program Files (x86)\\OneStop Reporting\\v4\\OneStop.OSRFunctions.dll"
"RuntimeVersion"="v4.0.30319"
"Class"="OneStop.ReportPlayer.OSRFunctions"
@="C:\\WINDOWS\\SysOW64\\mscoree.dll"
"ThreadingModel"="Both"

[HKEY_CLASSES_ROOT\wow6432Node\CLSID\{74B6B2D2-F28A-4F03-BB6A-6B5DA5306460}\InprocServer32\3.3.0.0]
"RuntimeVersion"="v4.0.30319"
"Assembly"="OneStop.OSRFunctions, Version=3.3.0.0, Culture=neutral, PublicKeyToken=null"
"Class"="OneStop.ReportPlayer.OSRFunctions"
"CodeBase"="file:///C:\\Program Files (x86)\\OneStop Reporting\\v4\\OneStop.OSRFunctions.dll"

[HKEY_CLASSES_ROOT\wow6432Node\CLSID\{74B6B2D2-F28A-4F03-BB6A-6B5DA5306460}\ProgId]
@="OneStop.ReportPlayer.OSRFunctions"

[HKEY_CLASSES_ROOT\wow6432Node\CLSID\{74B6B2D2-F28A-4F03-BB6A-6B5DA5306460}\Programmable]
```

64-bit:

```
Windows Registry Editor Version 5.00

[HKEY_CLASSES_ROOT\CLSID\{74B6B2D2-F28A-4F03-BB6A-6B5DA5306460}]
@="OneStop Reporting Functions"

[HKEY_CLASSES_ROOT\CLSID\{74B6B2D2-F28A-4F03-BB6A-6B5DA5306460}\Implemented Categories]

[HKEY_CLASSES_ROOT\CLSID\{74B6B2D2-F28A-4F03-BB6A-6B5DA5306460}\Implemented Categories\{62C8FE65-4EBB-45e7-B440-6E39B2CDBF29}]

[HKEY_CLASSES_ROOT\CLSID\{74B6B2D2-F28A-4F03-BB6A-6B5DA5306460}\InprocServer32]
"Assembly"="OneStop.OSRFunctions, Version=3.3.0.0, Culture=neutral, PublicKeyToken=7c34acdc7ce6cab4"
"CodeBase"="file:///C:\\Program Files (x86)\\OneStop Reporting\\v3\\OneStop.OSRFunctions.dll"
"Class"="OneStop.ReportPlayer.OSRFunctions"
@="C:\\windows\\system32\\mscoree.dll"
"ThreadingModel"="Both"
"RuntimeVersion"="v4.0.30319"

[HKEY_CLASSES_ROOT\CLSID\{74B6B2D2-F28A-4F03-BB6A-6B5DA5306460}\InprocServer32\3.3.0.0]
"RuntimeVersion"="v4.0.30319"
"Assembly"="OneStop.OSRFunctions, Version=3.3.0.0, Culture=neutral, PublicKeyToken=7c34acdc7ce6cab4"
"Class"="OneStop.ReportPlayer.OSRFunctions"
"CodeBase"="file:///C:\\Program Files (x86)\\OneStop Reporting\\v3\\OneStop.OSRFunctions.dll"

[HKEY_CLASSES_ROOT\CLSID\{74B6B2D2-F28A-4F03-BB6A-6B5DA5306460}\ProgId]
@="OneStop.ReportPlayer.OSRFunctions"

[HKEY_CLASSES_ROOT\CLSID\{74B6B2D2-F28A-4F03-BB6A-6B5DA5306460}\Programmable]
```