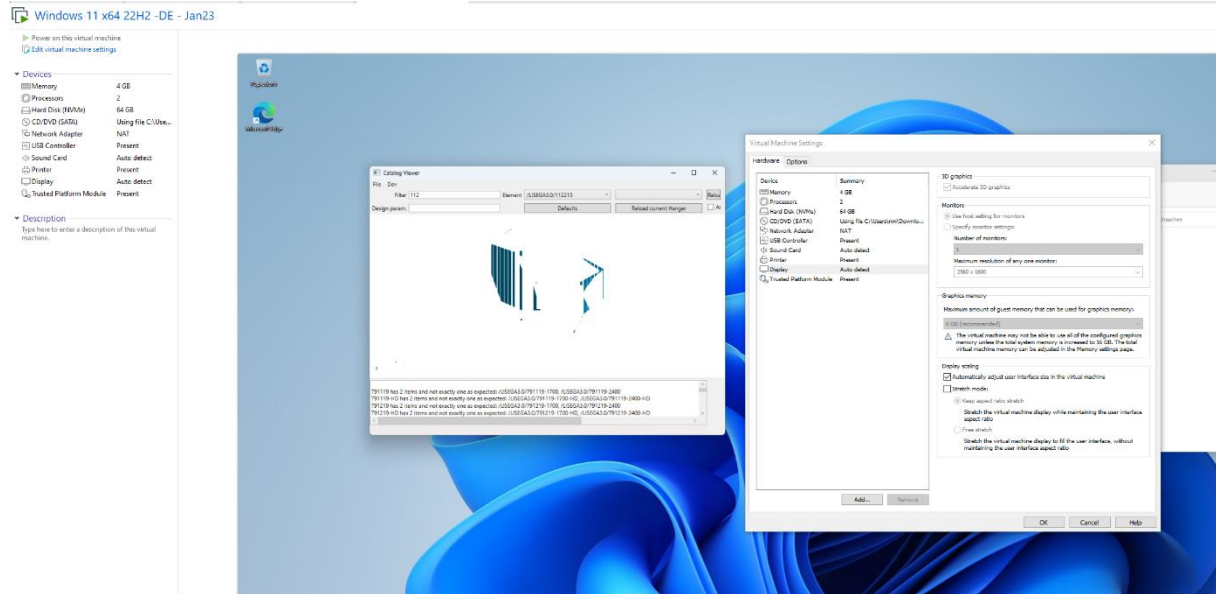
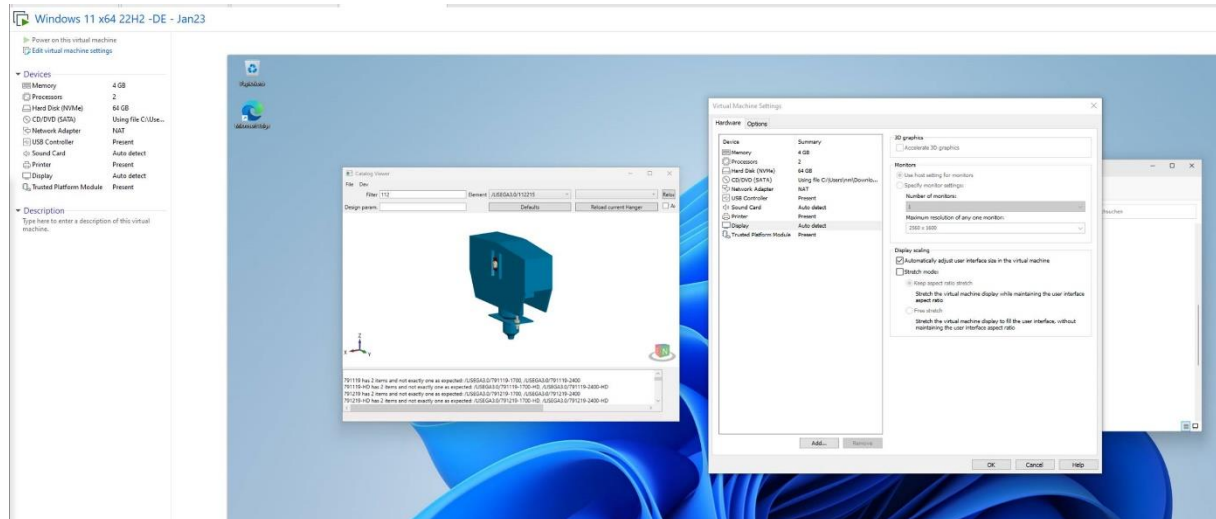


Fix display errors regarding 3D in VM when hardware acceleration is switched on Laptop with Intel & nvidia graphics card

This is the situation: 3D acceleration VM settings enabled (default), but no usable graphics result:



The simplest, but also the worst solution in terms of performance is simply to turn off 3D acceleration. Then the representation is correct:



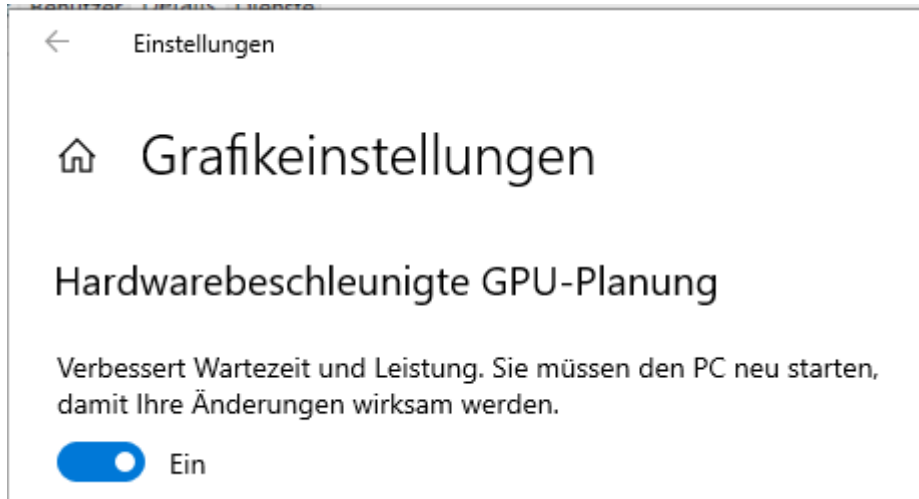
Fix display errors regarding 3D in VM when hardware acceleration is switched on Laptop with Intel & nvidia graphics card

The second and definitely better solution is to fix the error.

The error is not to be found in the VM settings or in VMware WorkStation, but in the graphics settings of the host system - i.e. the laptop itself!

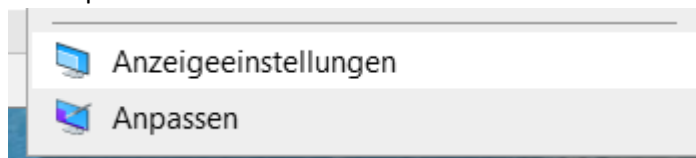
3D acceleration under Windows on laptop with Intel & nvidia graphics card

1. Turn on hardware accelerated GPU scheduling (I apologize, but my host system is a German Windows)

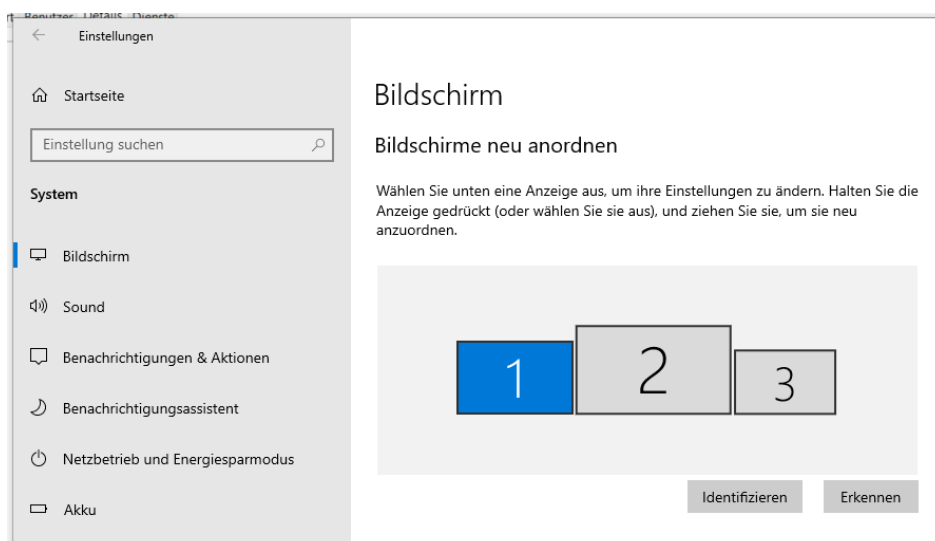


This can be found in the following way:

Desktop context menu:

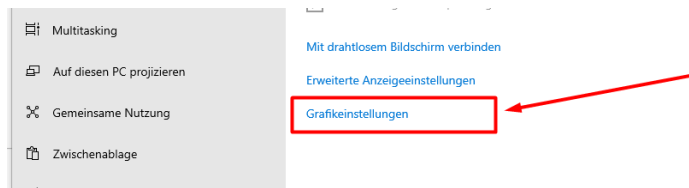


➔ Display settings

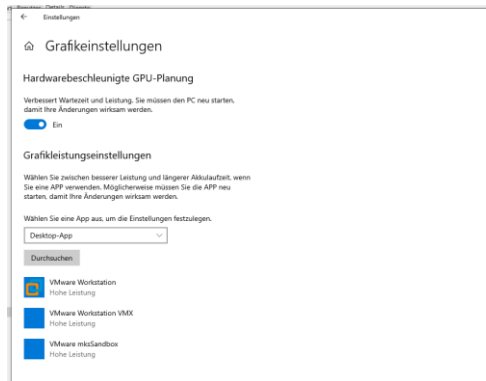


Fix display errors regarding 3D in VM when hardware acceleration is switched on
Laptop with Intel & nvidia graphics card

Scroll all the way down and select graphics settings:

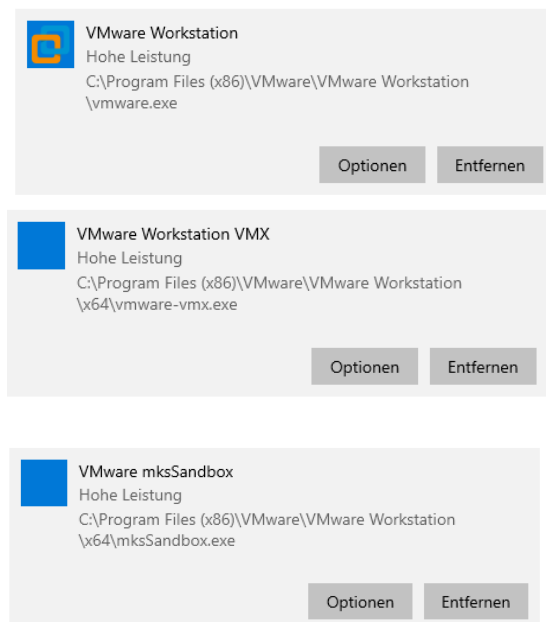


Then the following information appears:



Then switch on the "Hardware Accelerated GPU Scheduling" and ...

2. Set the graphics performance settings for selected programs there as well
Use the "Browse" button to record all the desired programs.
In my case these are:



All you have to do then is press the "Options" button for each program and switch to "High performance":

Fix display errors regarding 3D in VM when hardware acceleration is switched on
Laptop with Intel & nvidia graphics card



This solves the problem with the graphics display with activated 3D acceleration in a VM and you can now see quite clearly how the GPU performance is divided in the task manager of the host system:

