

Certificate Enrollment

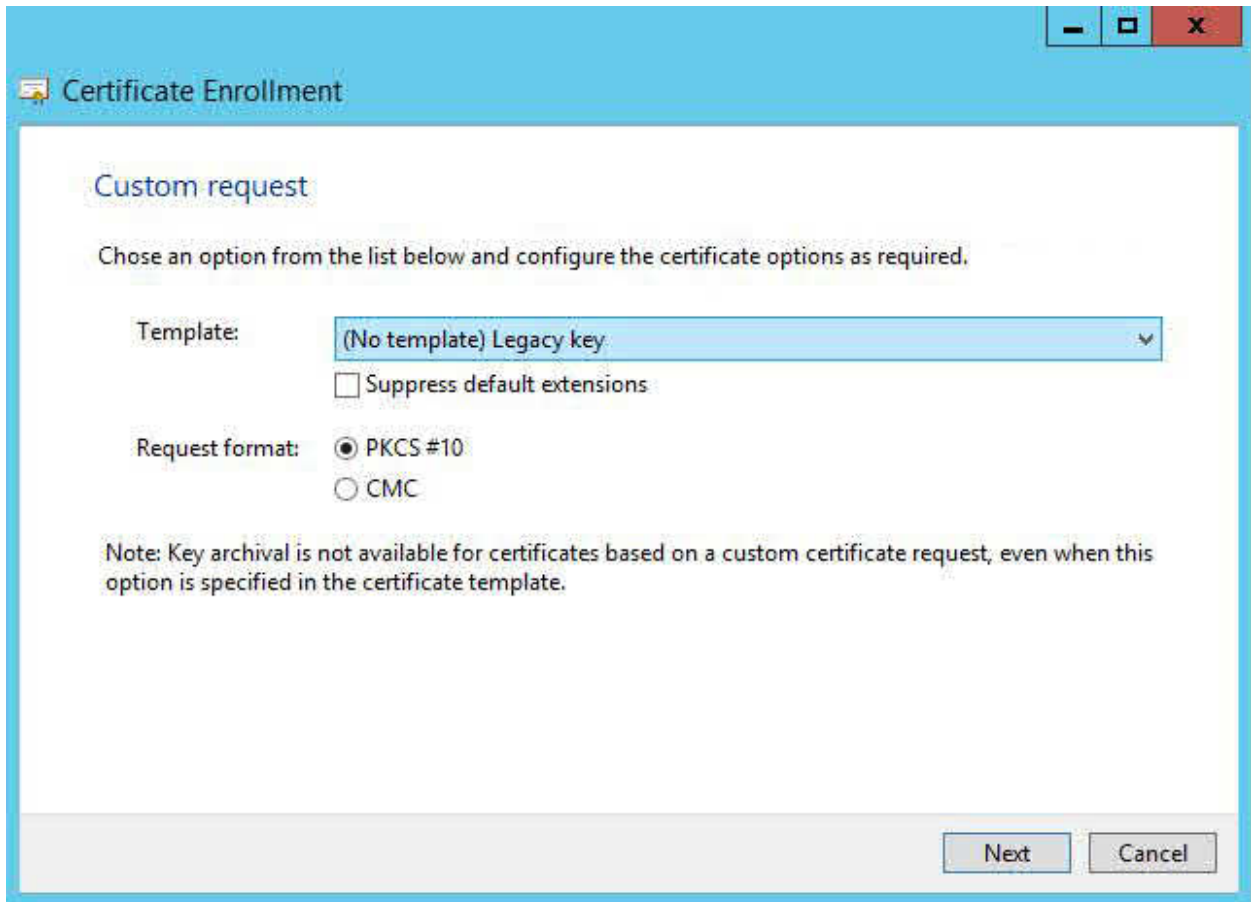
Select Certificate Enrollment Policy

Certificate enrollment policy enables enrollment for certificates based on predefined certificate templates. Certificate enrollment policy may already be configured for you.

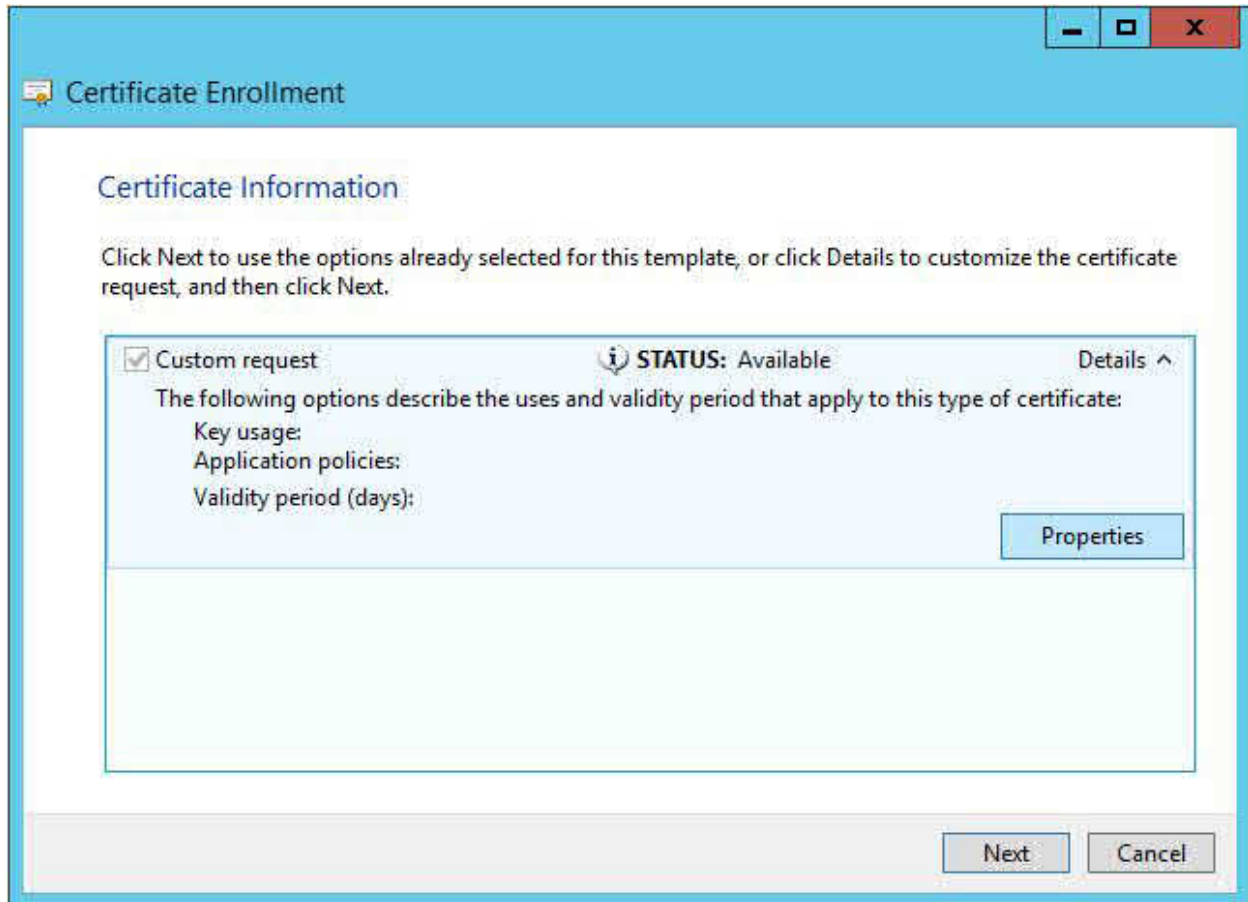
Configured by your administrator	
Active Directory Enrollment Policy	▼
Configured by you	Add New
Custom Request	
Proceed without enrollment policy	

Next

Cancel



Template: "(No template) Legacy Key" selection is very important



Select Properties

Certificate Properties

General Subject Extensions Private Key

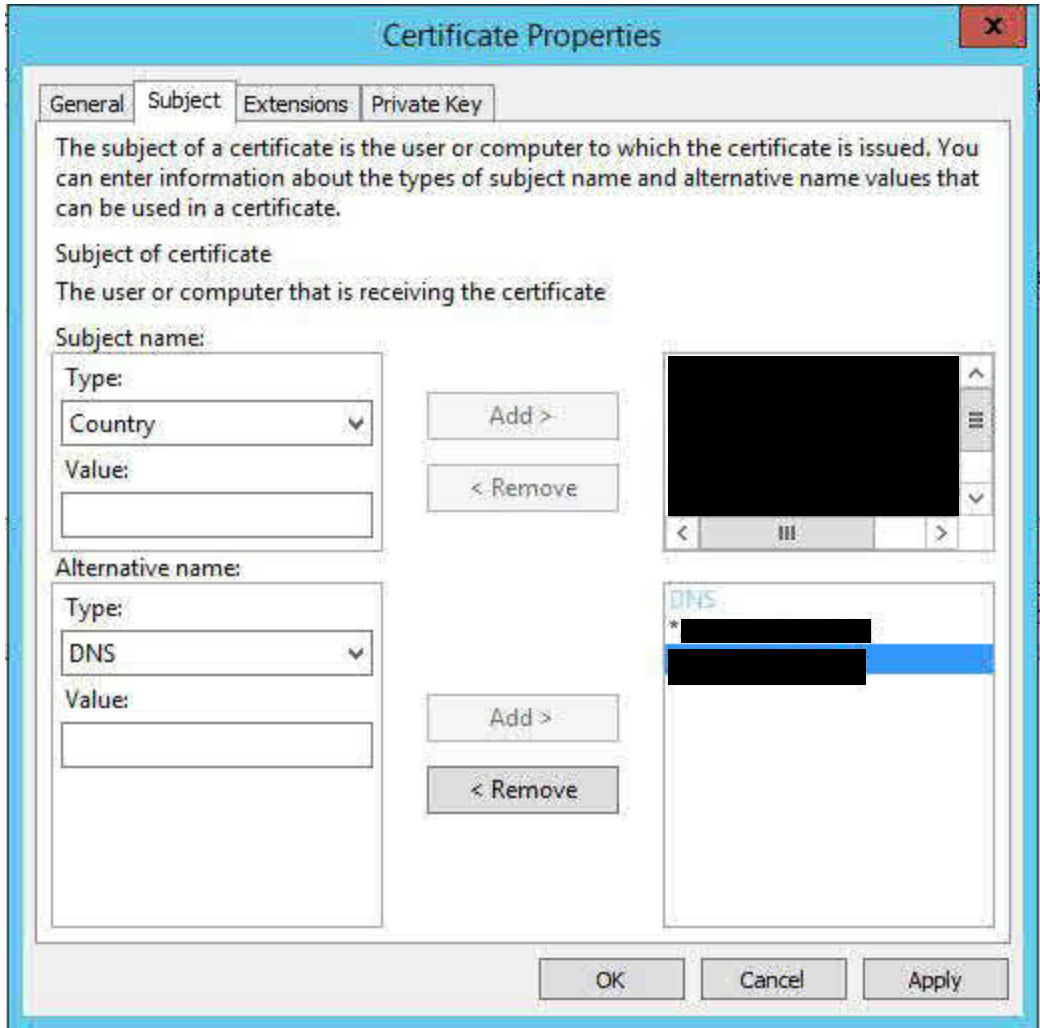
A friendly name and description will make it easier to identify and use a certificate.

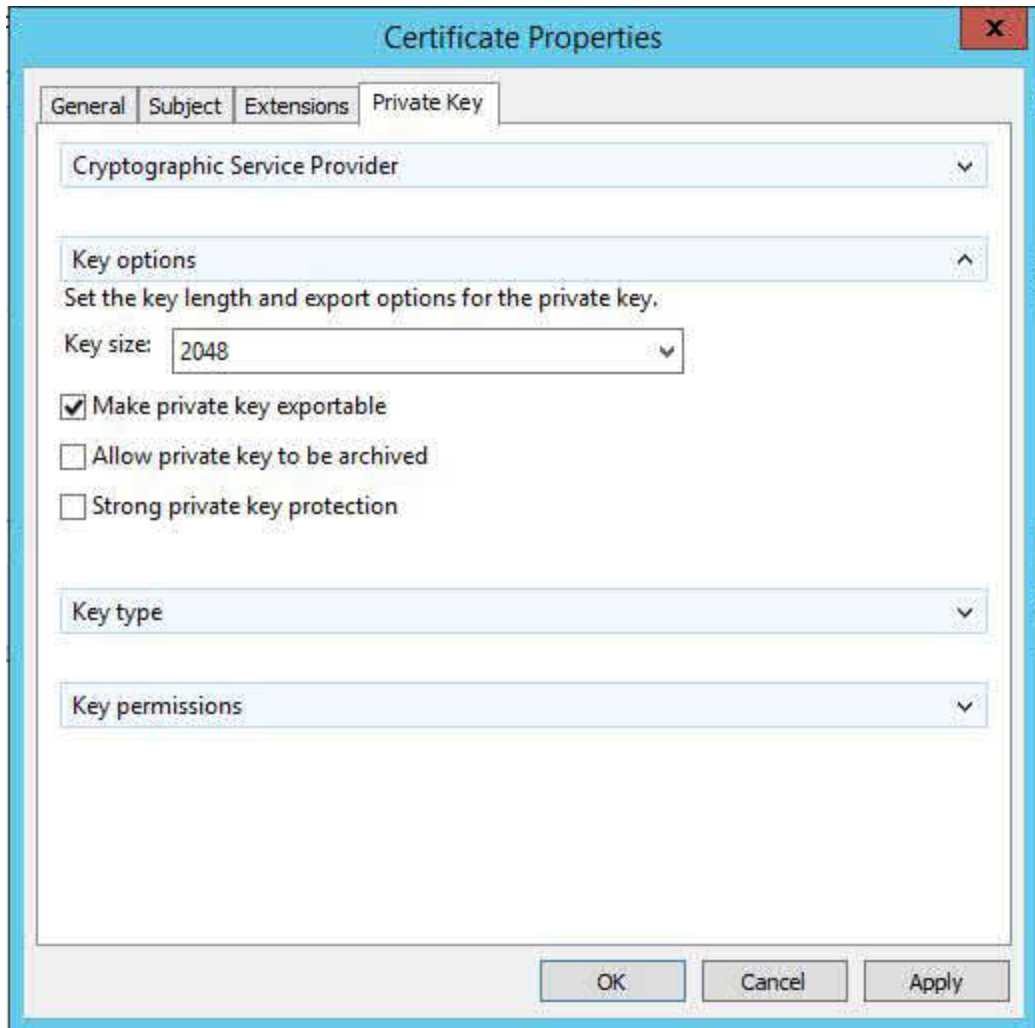
Friendly name:

vdm

Description:

OK Cancel Apply






Certificate Enrollment

Certificate Information

Click Next to use the options already selected for this template, or click Details to customize the certificate request, and then click Next.

Custom request

 **STATUS:** Available

Details ^

The following options describe the uses and validity period that apply to this type of certificate:

Key usage:

Application policies:

Validity period (days):

Properties

Next

Cancel

Certificate Enrollment

Where do you want to save the offline request?

If you want to save a copy of your certificate request or want to process the request later, save the request to your hard disk or removable media. Enter the location and name of your certificate request, and then click Finish.

File Name:

[Redacted] .req

Browse...

File format:

- Base 64
- Binary

Finish

Cancel

