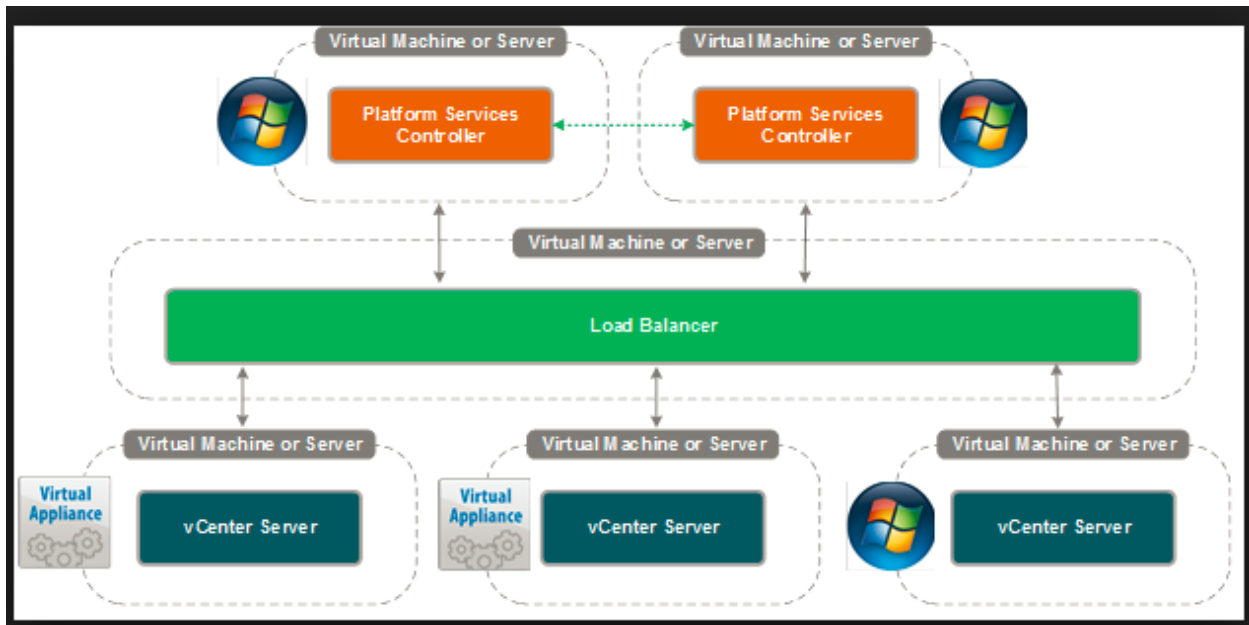


Contents

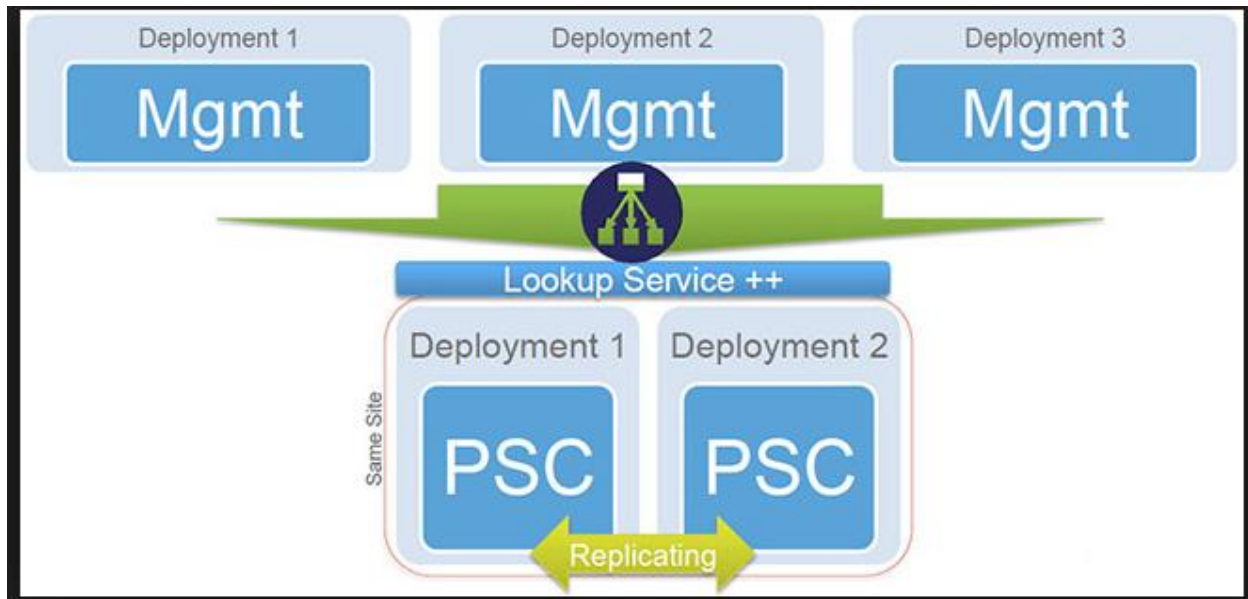
- 1. Step by step instructions to deploy a vSphere 6 with the multi-tenant PSC using the same site 1
- 2. Installing PSC1 2
- 3. Installing PSC2 and joining it to the existing site. 10

1. Step by step instructions to deploy a vSphere 6 with the multi-tenant PSC using the same site



We will be installing two PSC – PSC1 and PSC2 on the same site with single SSO domain,

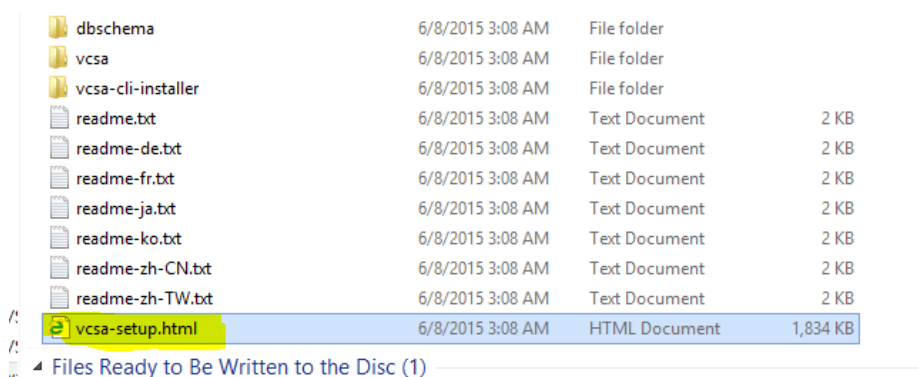
And one Vcenter server as show below



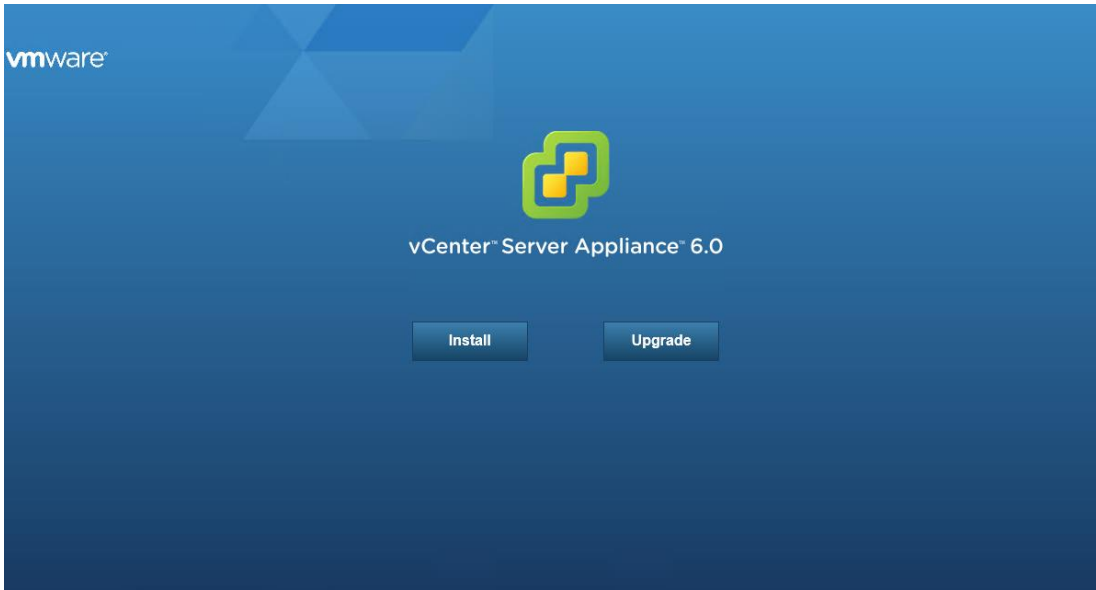
2. Installing PSC1

- 1.1 Make sure your DNS is properly working, check for the name resolution of all virtual machines
- 1.2 NTP server on which the host is configured should be up and running ,
- 1.3 Make sure the client integration plugin is installed on the staging vm
- 1.4 Make sure the supported adobe flash player is installed on the vm
- 1.5 Map the iso , VMware vSphere 6.0 appliance to any of the virtual machine , since we push the PSC to the host you can attach iso to any staging VM.

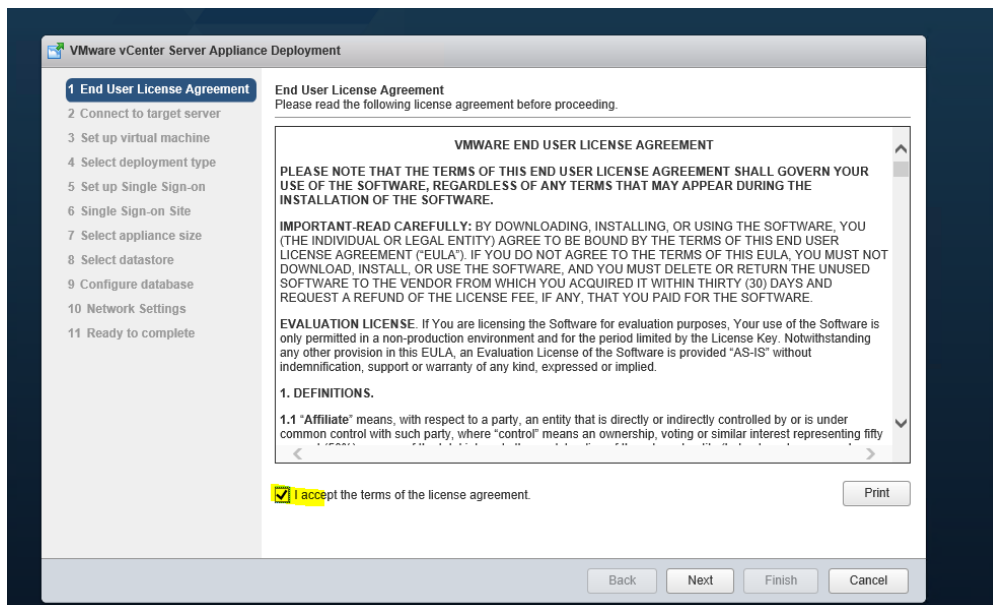
→ Run the set up



→Click allow, when prompted



Accept the EULA



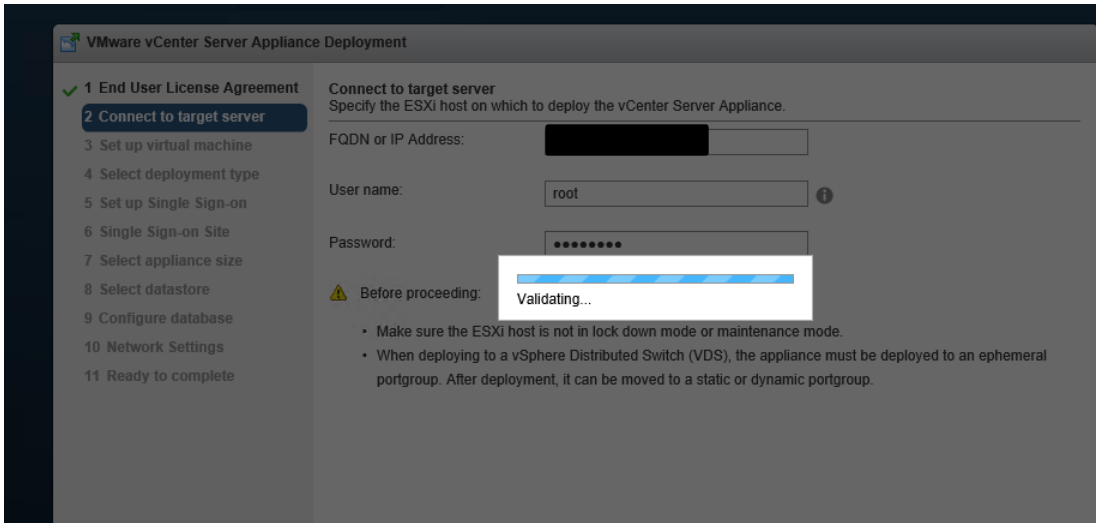
Specify the esxi host ip on which the PSC1 needs to be deployed

The screenshot shows the 'VMware vCenter Server Appliance Deployment' wizard. The left sidebar lists 11 steps, with '2 Connect to target server' selected. The main area is titled 'Connect to target server' and instructs the user to 'Specify the ESXi host on which to deploy the vCenter Server Appliance.' It contains three input fields: 'FQDN or IP Address' with the placeholder text 'ip of esxi host on which psc deploy', 'User name' with the value 'root', and 'Password' with masked characters. Below these fields is a warning icon and the text 'Before proceeding:' followed by two bullet points: 'Make sure the ESXi host is not in lock down mode or maintenance mode.' and 'When deploying to a vSphere Distributed Switch (VDS), the appliance must be deployed to an ephemeral portgroup. After deployment, it can be moved to a static or dynamic portgroup.' At the bottom right, there are four buttons: 'Back', 'Next', 'Finish', and 'Cancel'.

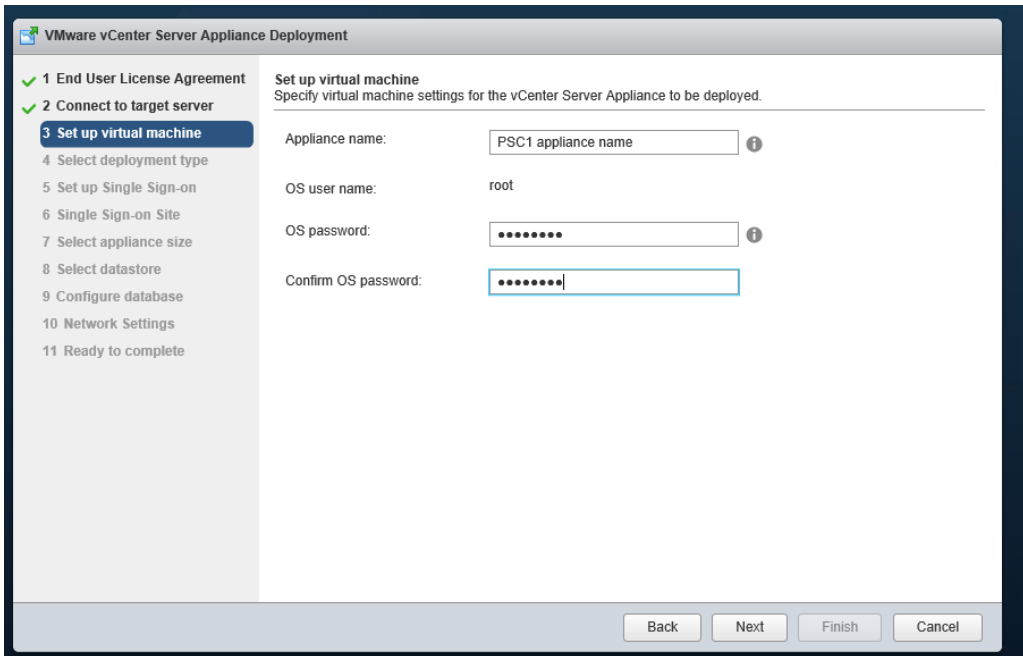
Accept the certificate of the esxi host



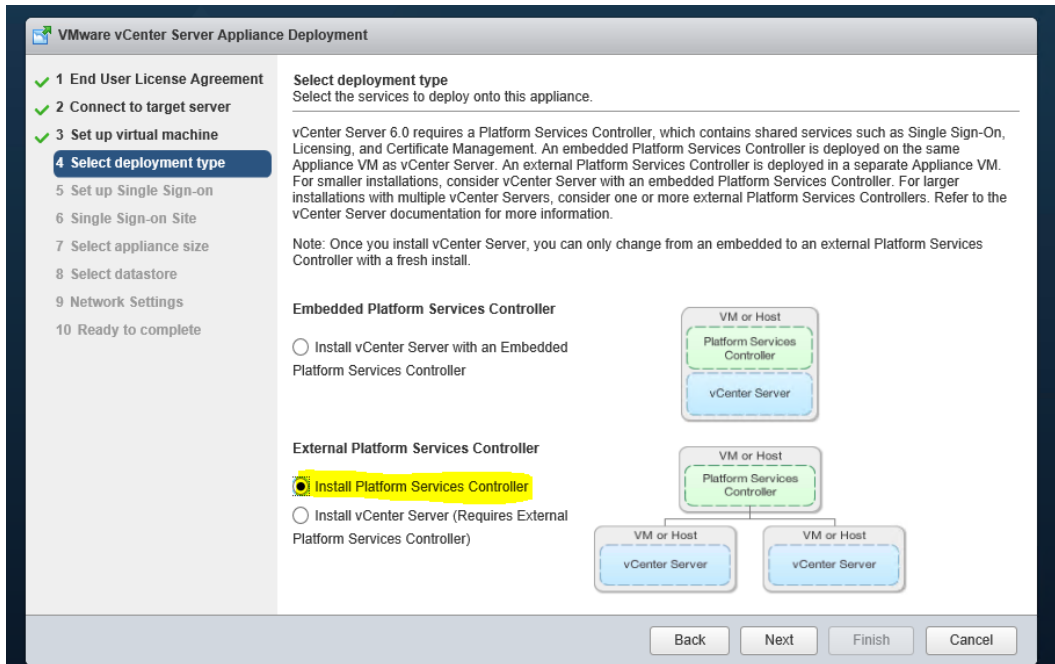
It will validate and will proceed to next



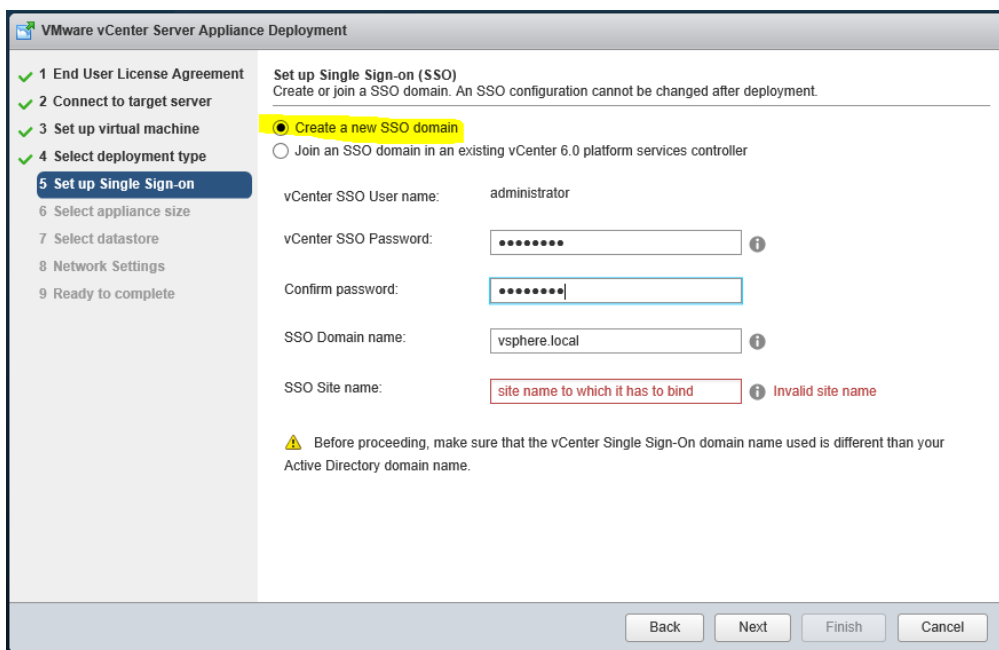
Enter the PSC1 appliance name , May be netbios or FQDN , choose the OS password of your choice



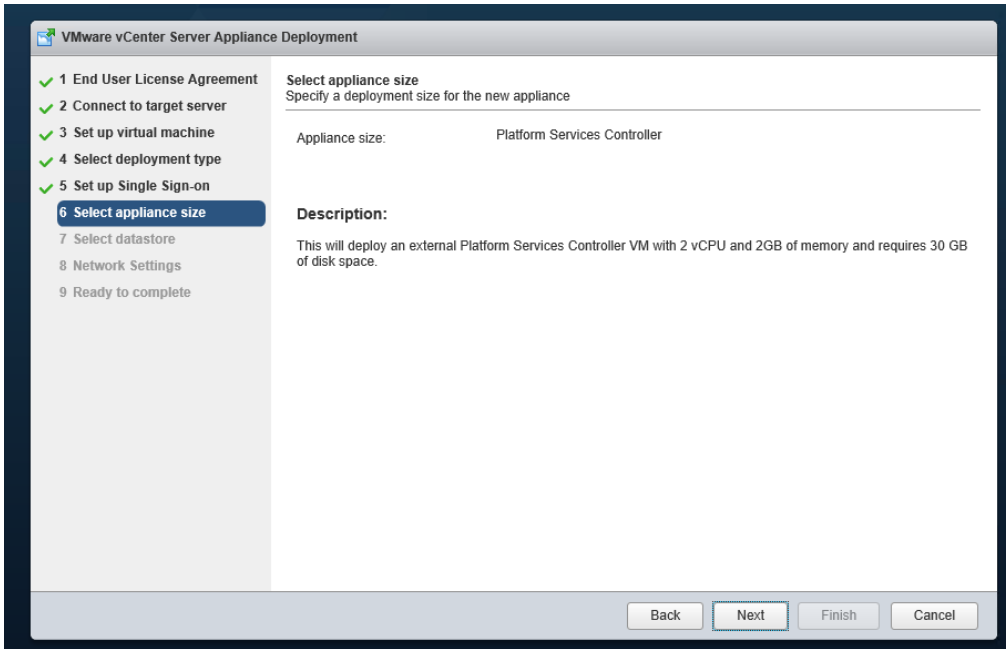
Choose install PSC



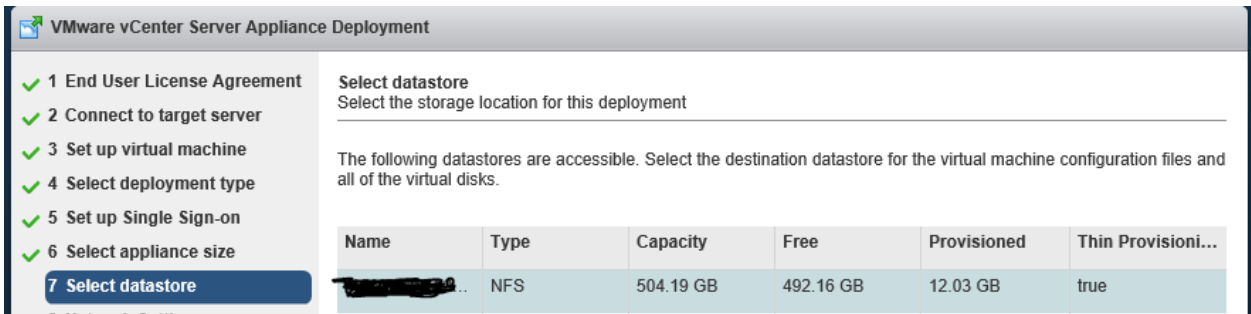
Create new SSO domain , and choose the domain name which is different from your AD domain name , in this test I used vsphere.local



Accept the size and click next



Choose the datastore on which PSC1 needs to be deployed



Choose on which port group and vlan the psc1 should reside and do the networking configuration as below

✓ 1 End User License Agreement
✓ 2 Connect to target server
✓ 3 Set up virtual machine
✓ 4 Select deployment type
✓ 5 Set up Single Sign-on
✓ 6 Select appliance size
✓ 7 Select datastore
8 Network Settings
9 Ready to complete

IP address family: IPv4

Network type: static

Network address: ip for psc1 Invalid IP

System name [FQDN or IP address]: psc1 appliance name Invalid System Name

Subnet mask: subnet mask Invalid IP

Network gateway: gateway Invalid IP

Network DNS Servers (separated by commas): dnsip Invalid IP

Configure time sync:
 Synchronize appliance time with ESXi host
 Use NTP servers (Separated by commas)
ntp server ip

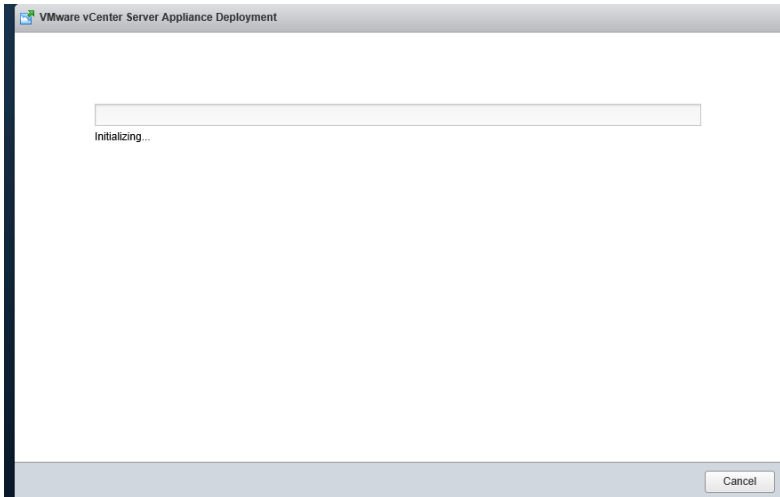
Enable ssh

Back Next Finish Cancel

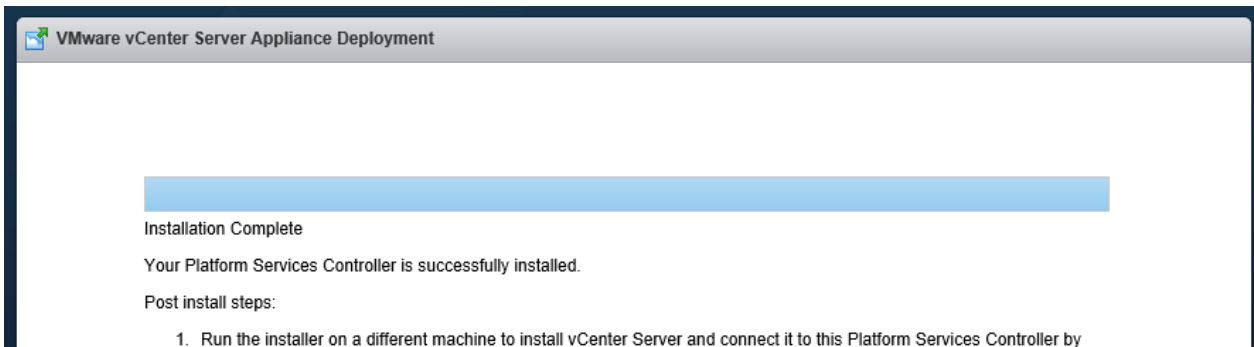
Verify the settings and finish the deployment , this is start the psc1 deployment on the specified host

It will create a VM with the appliance name and configure the new SSO with user administrator@vsphere.local and password specified by you

Check the progress

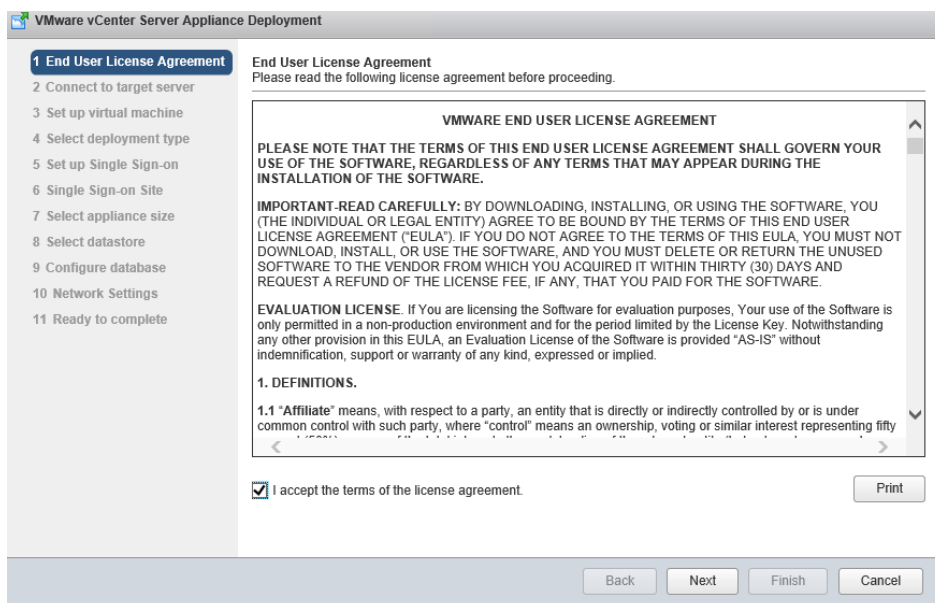


Close once finished



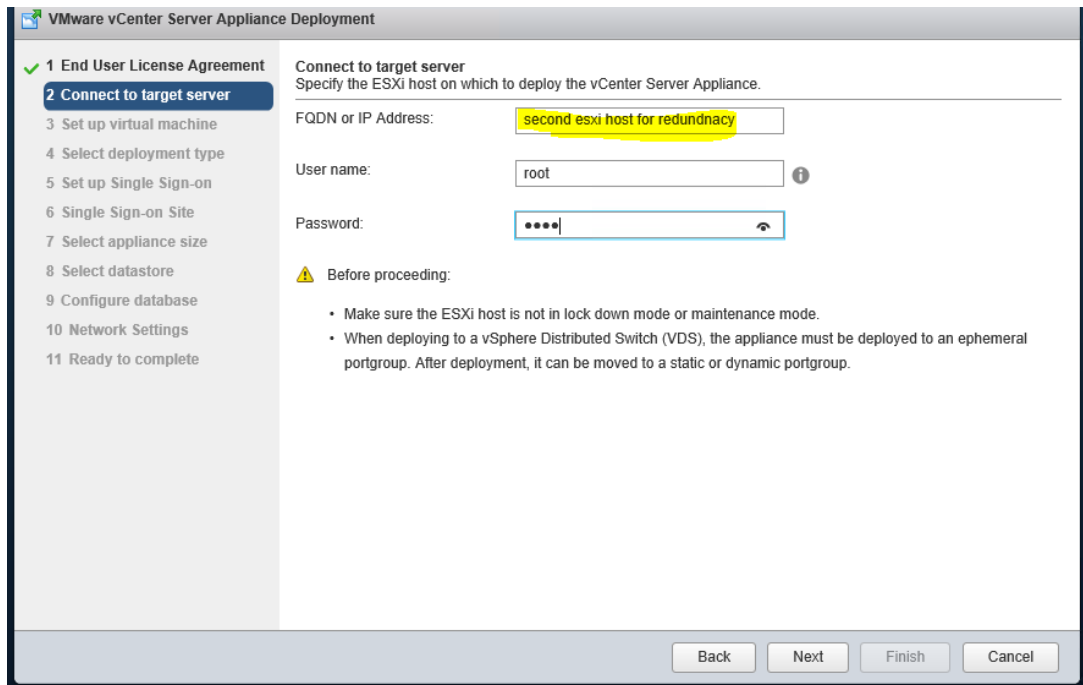
3. Installing PSC2 and joining it to the existing site.

Run the same installer again, and click on install and accept the EULA



Choose an another host to deploy the psc2,

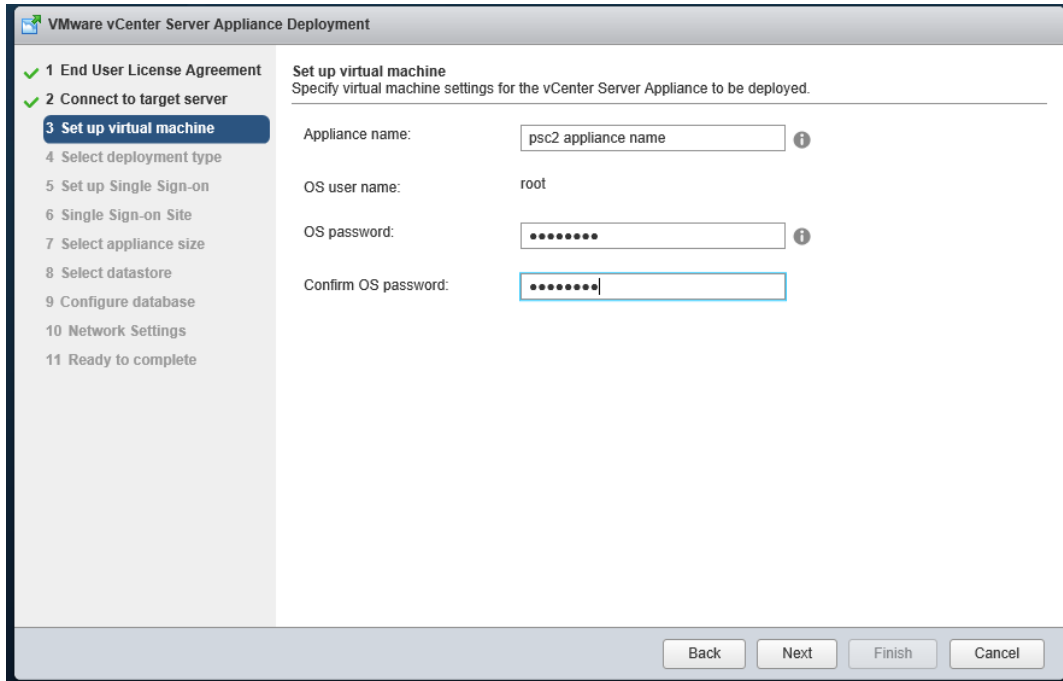
Enter esxi host name and its associated credentials



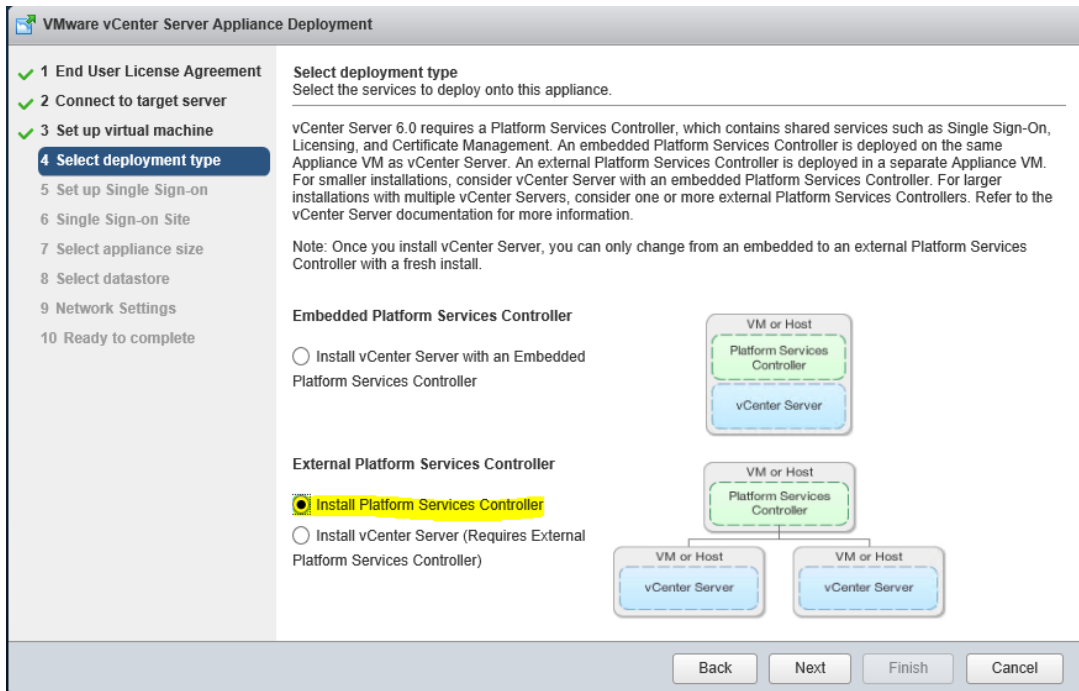
The screenshot shows the VMware vCenter Server Appliance Deployment wizard. The title bar reads "VMware vCenter Server Appliance Deployment". On the left, a progress list shows steps 1 through 11, with step 2, "Connect to target server", highlighted in blue. The main area is titled "Connect to target server" and contains the instruction "Specify the ESXi host on which to deploy the vCenter Server Appliance." Below this, there are three input fields: "FQDN or IP Address:" with the value "second esxi host for redundancy" (highlighted in yellow), "User name:" with the value "root", and "Password:" with masked characters "••••". A warning icon and the text "Before proceeding:" are followed by two bullet points: "Make sure the ESXi host is not in lock down mode or maintenance mode." and "When deploying to a vSphere Distributed Switch (VDS), the appliance must be deployed to an ephemeral portgroup. After deployment, it can be moved to a static or dynamic portgroup." At the bottom right, there are four buttons: "Back", "Next", "Finish", and "Cancel".

Accept the certificates and proceed next

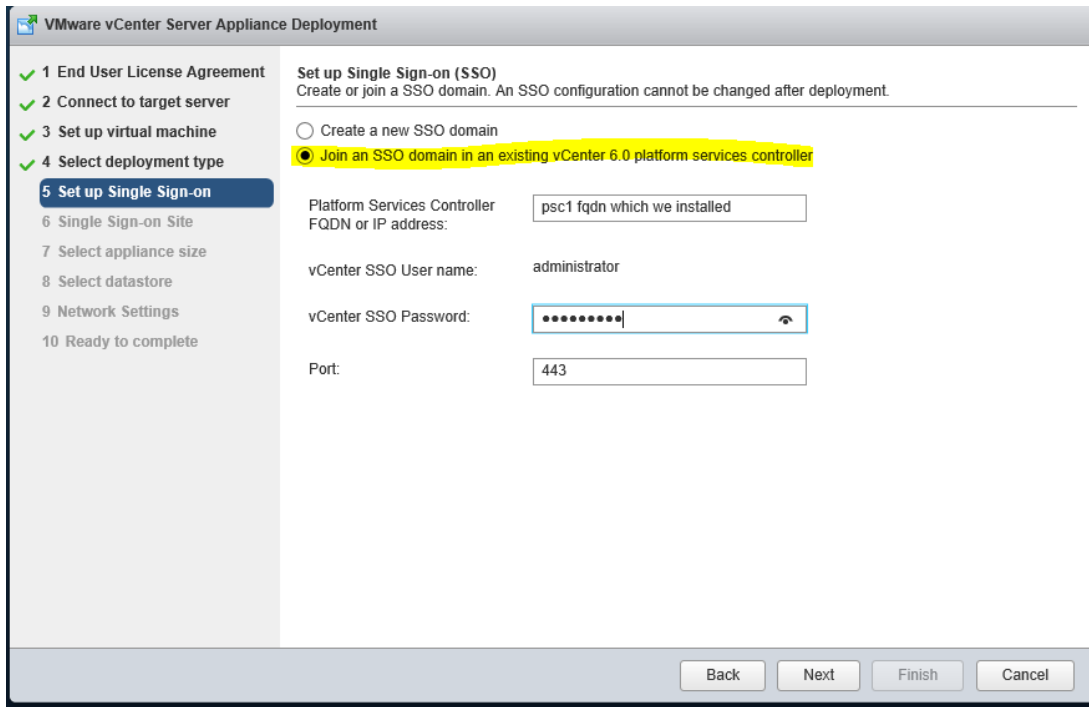
Enter the PSC2 appliance name and choose the OS password



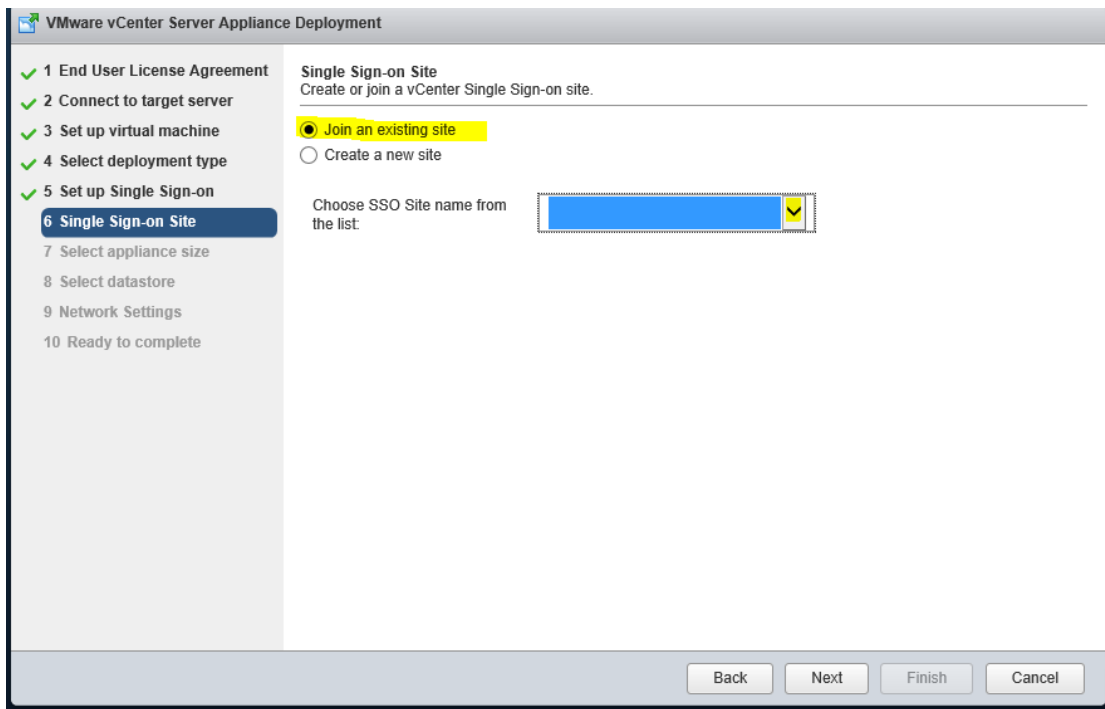
Choose again install PSC for the GUI as per out requirement



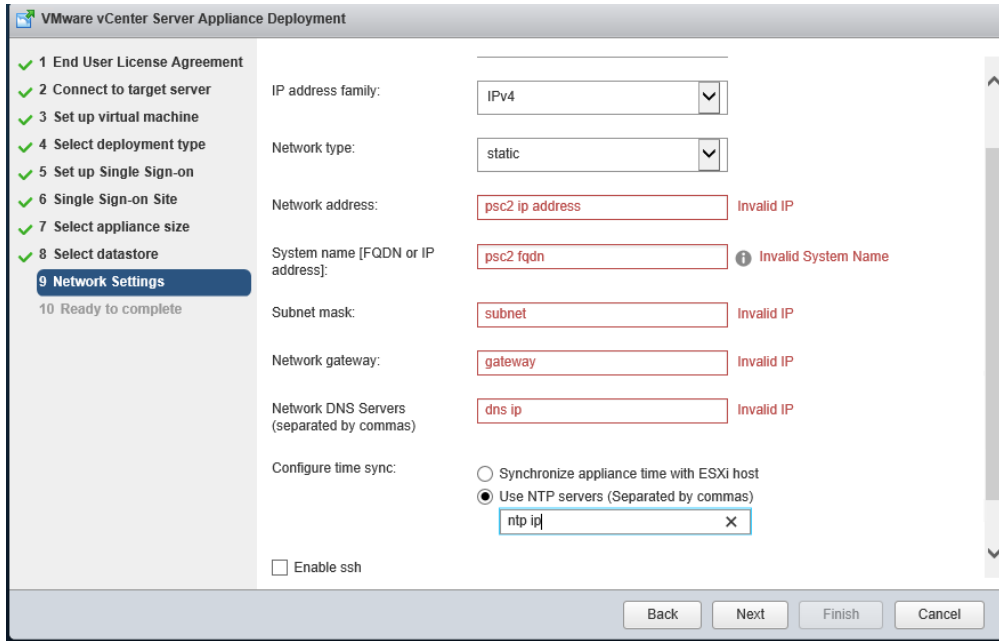
Now join the PSC2 with the created SSO domain previously



From the drop down , choose the site name , which we provided during the PSC1 installation



Accept the appliance size, choose the data store , and proceed with the networking configuration of psc2



Fill the details, check the configuration at the final page and click finish to start the deployment

Make sure you have two new VM with PSC1 and PSC2 appliance name created on the specified host.

