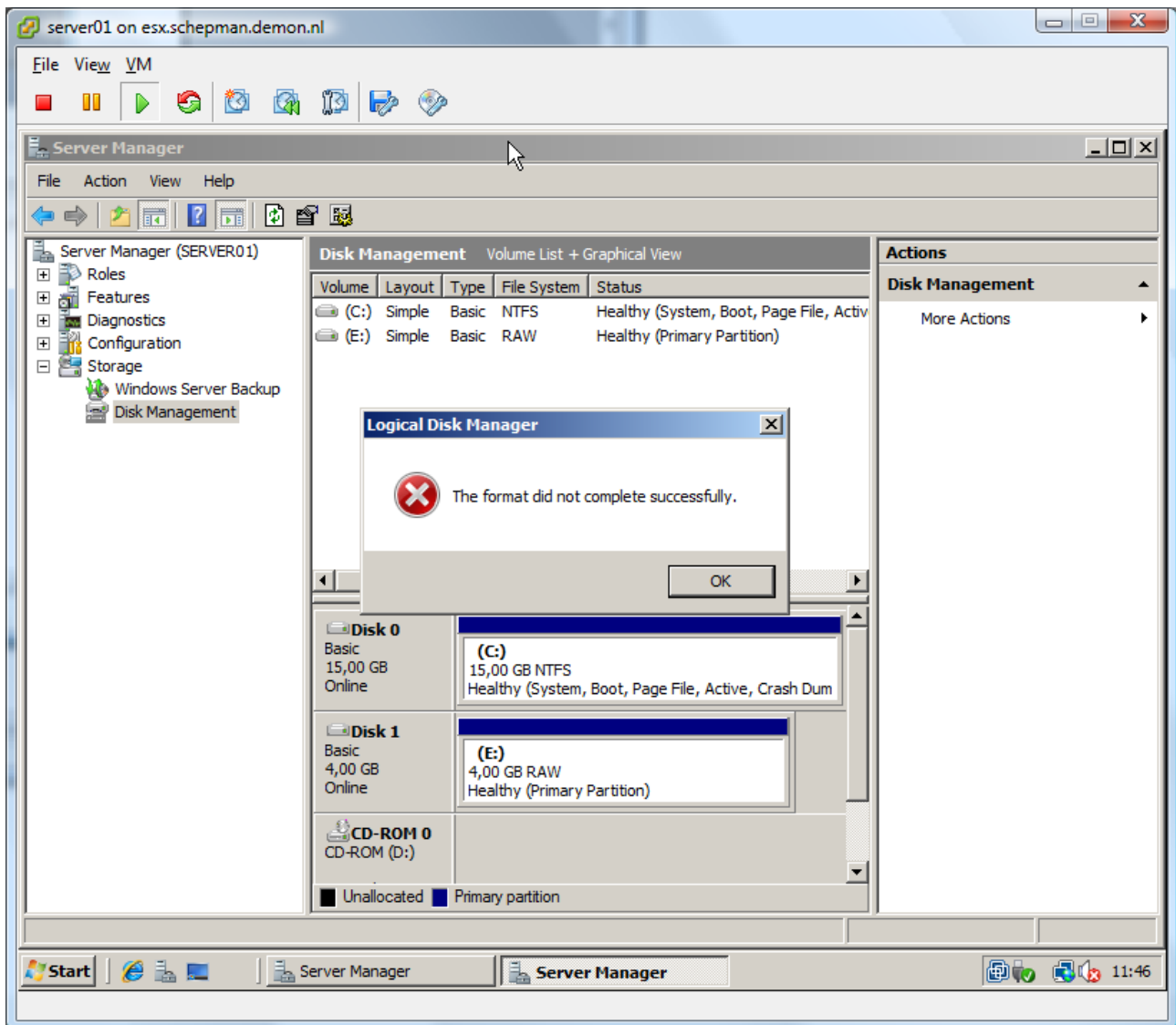
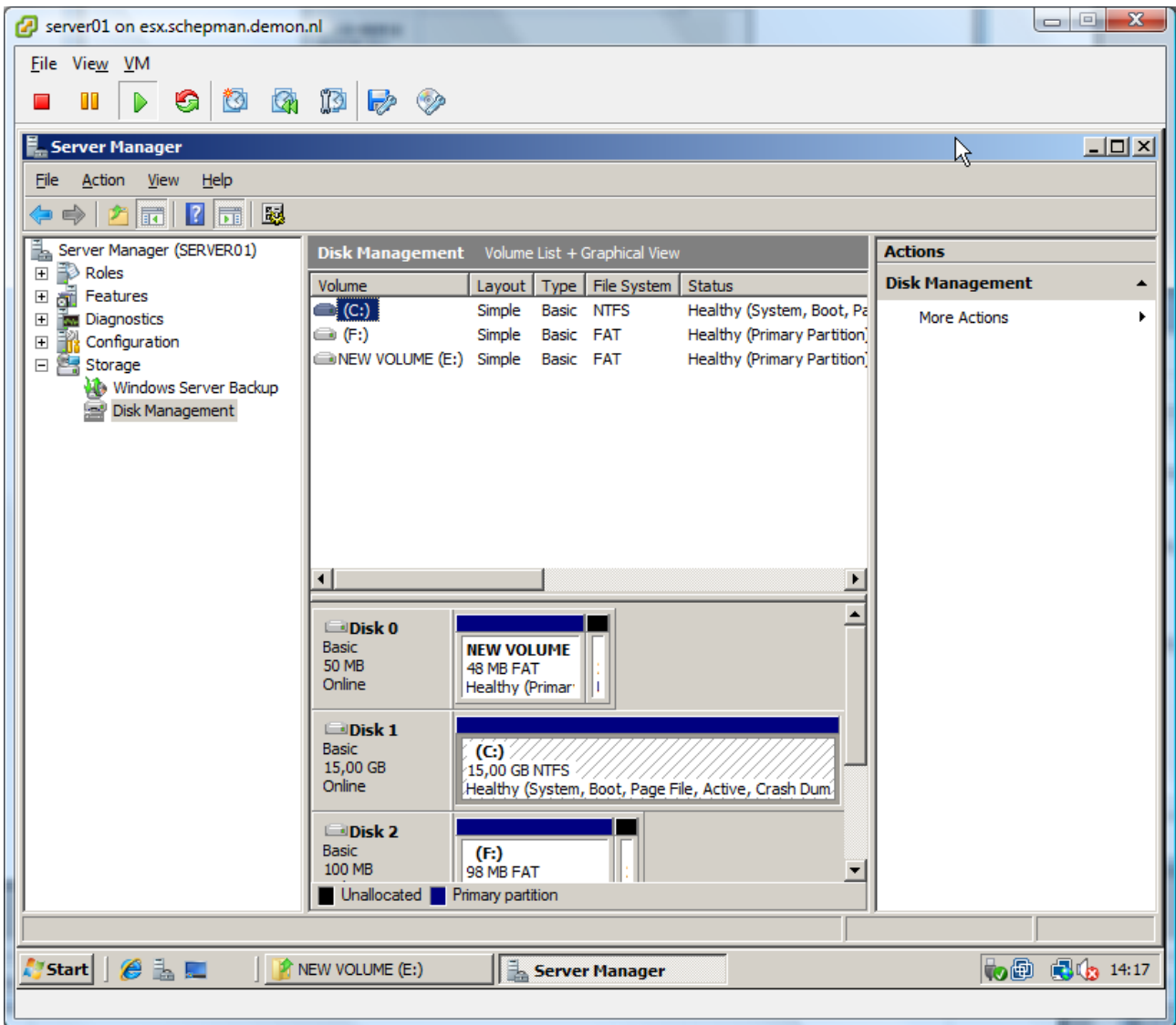


Installing: vm on NFS



installed vm on local datastore, disk 1 is a scsi disk on NFS store, trying to format it as NTFS



disk0 (IDE disk on NFS datastore) can be formatted as FAT16. Formatting FAT32 and NTFS fail
 disk 1 (SCSI on local datastore)is formatted as NTFS

disk 2 (SCSI copied from local datastore to NFS) was formatted as NTFS and was fully accessible.
 However it can only be formatted as FAT16.(as in screenshot)