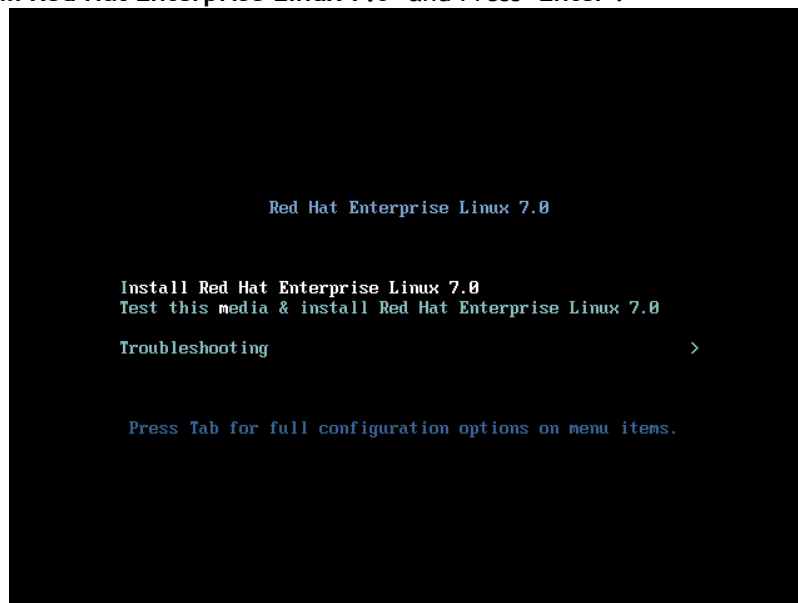
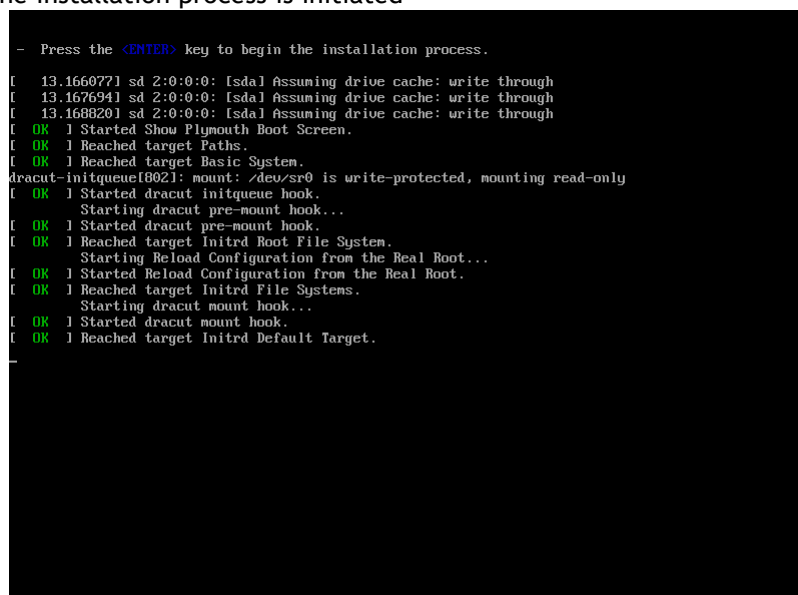


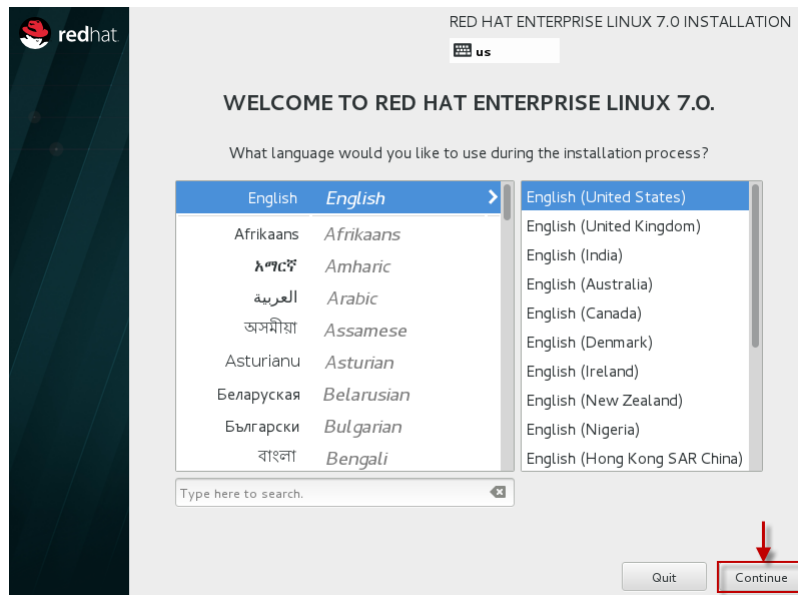
Once you insert and boot your machine with the RHEL DVD, you will get the below screen. Select "Install Red Hat Enterprise Linux 7.0" and Press "Enter".



As you see the installation process is initiated

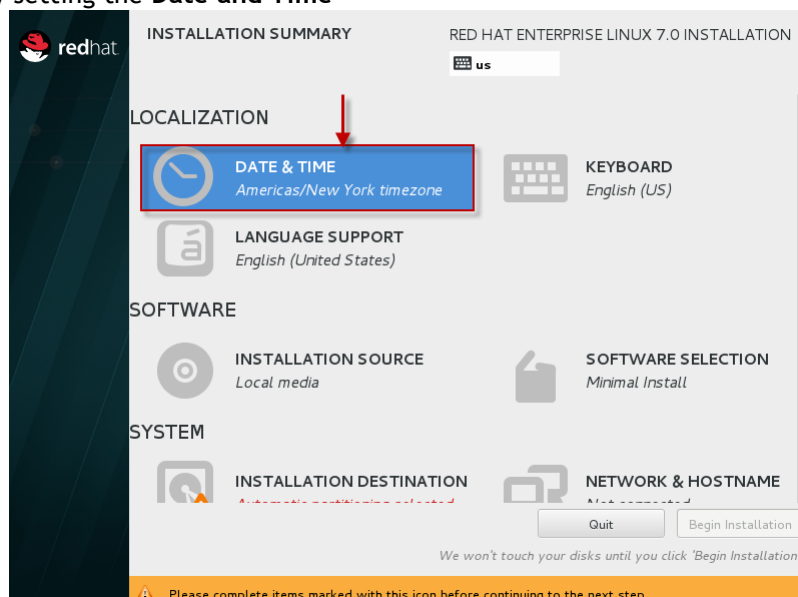


Select the Language preference



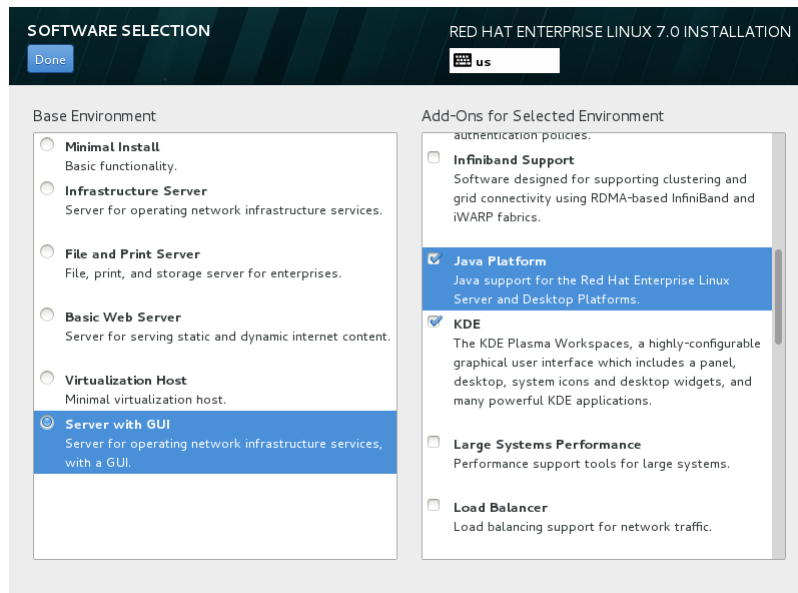
The Next screen contains almost all the configuration which has to be performed for the installation. Since we have already selected our **Language** and **Keyboard** preferences, we can skip that step here.

Lets start by setting the **Date and Time**

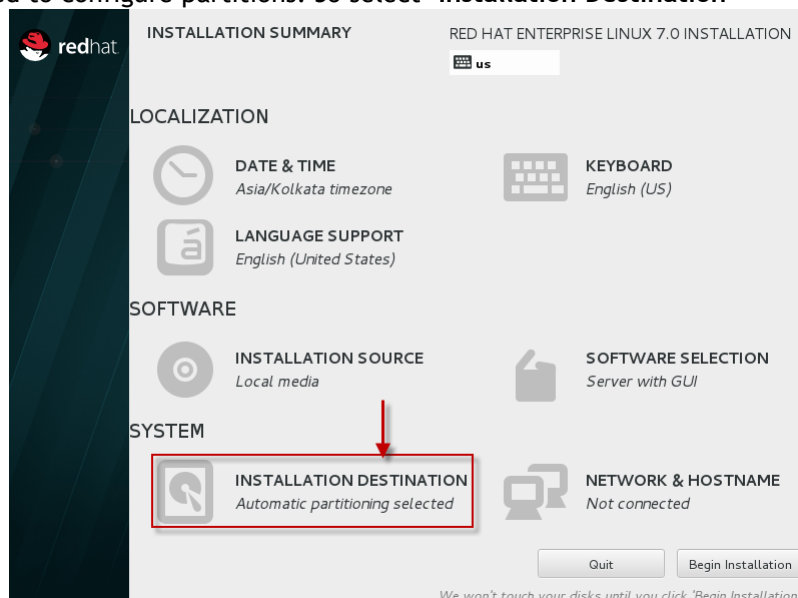


Select your **Location** as for me it is **Asia/Muscat**

Next we will select the packages which we want to install. So Select "**Software Installation**" which will lead you to the below screen. In my case I will install the "**Base Installation**" package having "**Server with GUI**" and in case you want to add any extra Add On, you can select the same from the left panel as shown below.

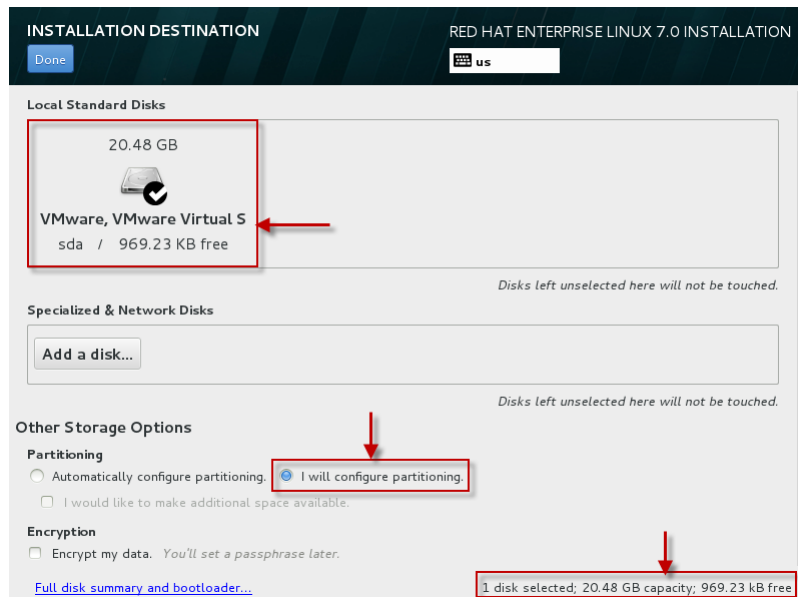


Next we need to configure partitions. So select "Installation Destination"

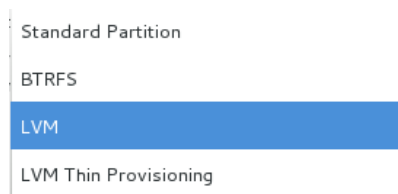


Select the hard disk which you have used to install RHEL 7, as for my case as you can see 20GB hard drive.

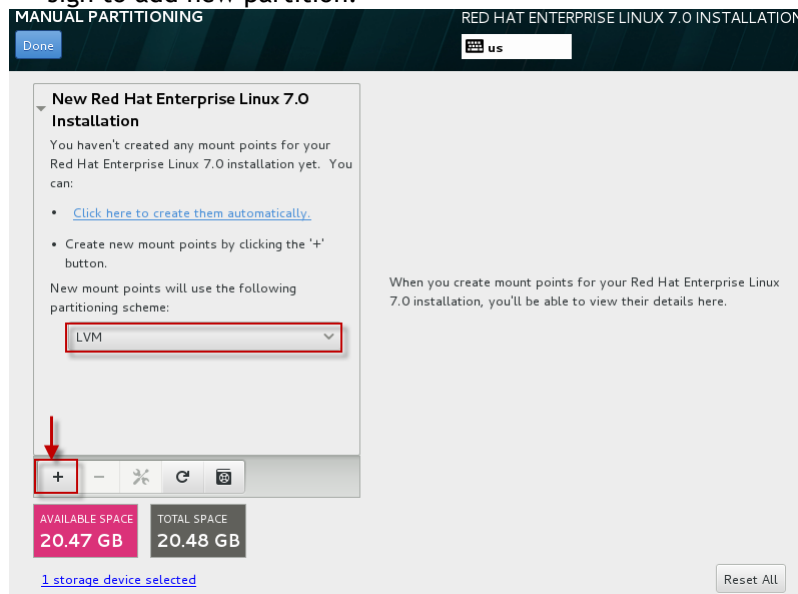
Also if you want the OS to automatically create the partition select the same or else for this article lets manually create the partitions



You can create a partition with the below list of partition types. As for this article we will select LVM



Click on the "+" sign to add new partition.



For this article I will create `/boot`, `/`, `swap` partition under LVM with Volume Group name as "VolGroup00"

ADD A NEW MOUNT POINT

More customization options are available after creating the mount point below.

Mount Point:

Desired Capacity:

Change the partition type to **Ext4** as by default XFS will be selected for every partition you create.

Once you change these settings make sure you **"update settings"**

MANUAL PARTITIONING RED HAT ENTERPRISE LINUX 7.0 INSTALLATION

Done

New Red Hat Enterprise Linux 7.0 Installation

- DATA
- SYSTEM
- /boot** 200 MB
- sda1

AVAILABLE SPACE: 20.27 GB TOTAL SPACE: 20.48 GB

1 storage device selected

sda1

Name:

Mount Point:

Label:

Desired Capacity:

Device Type: Encrypt

File System: Reformat

Note: The settings you make on this screen will not be applied until you click on the main menu's 'Begin Installation' button.

By default Volume Group name is "rhel". Let us change it to **"VolGroup00"**

MANUAL PARTITIONING RED HAT ENTERPRISE LINUX 7.0 INSTAL

Done

New Red Hat Enterprise Linux 7.0 Installation

- DATA
- SYSTEM
- /boot 200 MB
- swap** 2.04 GB
- rhel-swap

AVAILABLE SPACE: 18.22 GB TOTAL SPACE: 20.48 GB

1 storage device selected

rhel-swap

Name:

Mount Point:

Label:

Desired Capacity:

Device Type: Enc

File System: Ref

Volume Group: (0 B free)

Note: The settings you make on this screen will not be s until you click on the main menu's 'Begin Installation'!

You can also configure the storage for **RAID** but let us skip that part as of now.

CONFIGURE VOLUME GROUP

Please create a name for this volume group and select at least one disk below.

Name:

Disk	Capacity	Free	ID
VMware, VMware Virtual S	20.48 GB	18.22 GB	

RAID Level: Encrypt

Size policy:

As you see all the mount points as planned are created with below name under LVM
VolGroup00-root
VolGroup00-swap

MANUAL PARTITIONING RED HAT ENTERPRISE LINUX 7.0 IN

us

New Red Hat Enterprise Linux 7.0 Installation

DATA

SYSTEM

/boot 200 MB
sda1

/ 18.22 GB >
VolGroup00-root

swap 2.04 GB
VolGroup00-swap

AVAILABLE SPACE: 969.23 kB | TOTAL SPACE: 20.48 GB

[1 storage device selected](#)

VolGroup00-root

Name:

Mount Point:

Label:

Desired Capacity: 18.228 GB

Device Type:

File System:

Volume Group:

Note: The settings you make on this screen will not be applied until you click on the main menu's 'Begin Install'.

Click on **Done** and select **Accept Changes**.


SUMMARY OF CHANGES

Your customizations will result in the following changes taking effect on the disks you've selected:

Order	Action	Type	Device Name	Mountpoint
1	Destroy Format	Unknown	sda	
2	Create Format	partition table (MSDOS)	sda	
3	Create Device	partition	sda1	
4	Create Device	partition	sda2	
5	Create Format	physical volume (LVM)	sda2	
6	Create Device	lvmvg	VolGroup00	
7	Create Device	lvmlv	VolGroup00-root	
8	Create Format	ext4	VolGroup00-root	/
9	Create Device	lvmlv	VolGroup00-swap	
10	Create Format	swap	VolGroup00-swap	
11	Create Format	ext4	sda1	/boot

Cancel & Return to Custom Partitioning Accept Changes

The last one is to **Configure Network**



INSTALLATION SUMMARY RED HAT ENTERPRISE LINUX 7.0 INSTALLATION

us

LOCALIZATION

DATE & TIME: Asia/Kolkata timezone KEYBOARD: English (US)

LANGUAGE SUPPORT: English (United States)

SOFTWARE

INSTALLATION SOURCE: Local media SOFTWARE SELECTION: Server with GUI

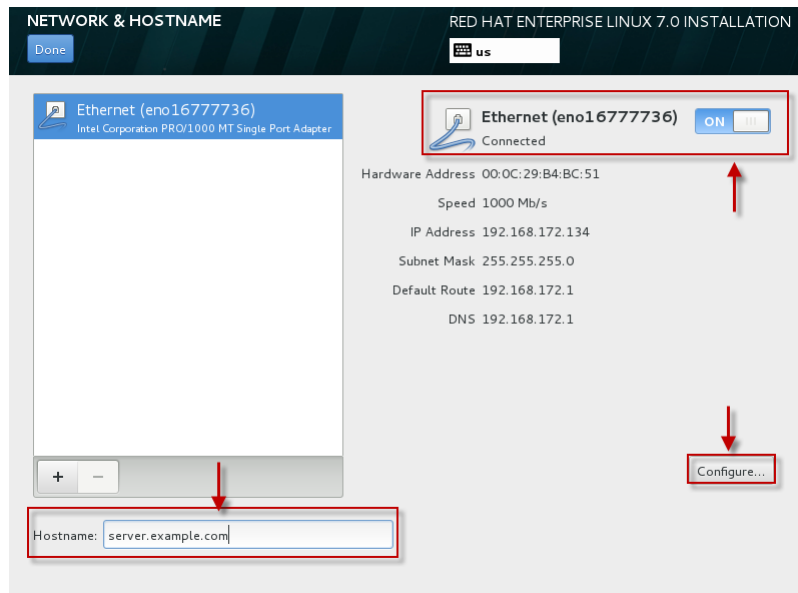
SYSTEM

INSTALLATION DESTINATION: Custom partitioning selected **NETWORK & HOSTNAME: Not connected**

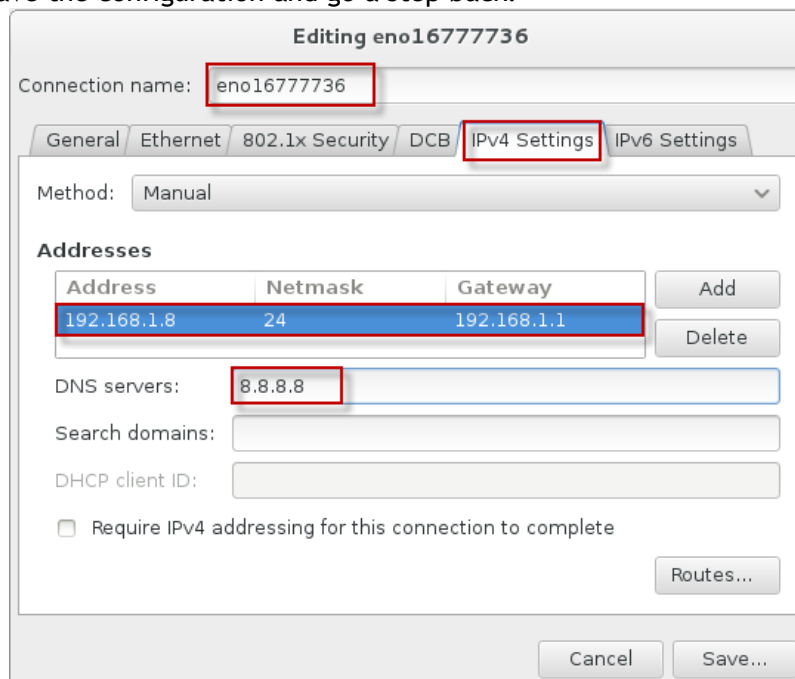
Quit Begin Installation

We won't touch your disks until you click 'Begin Installation'.

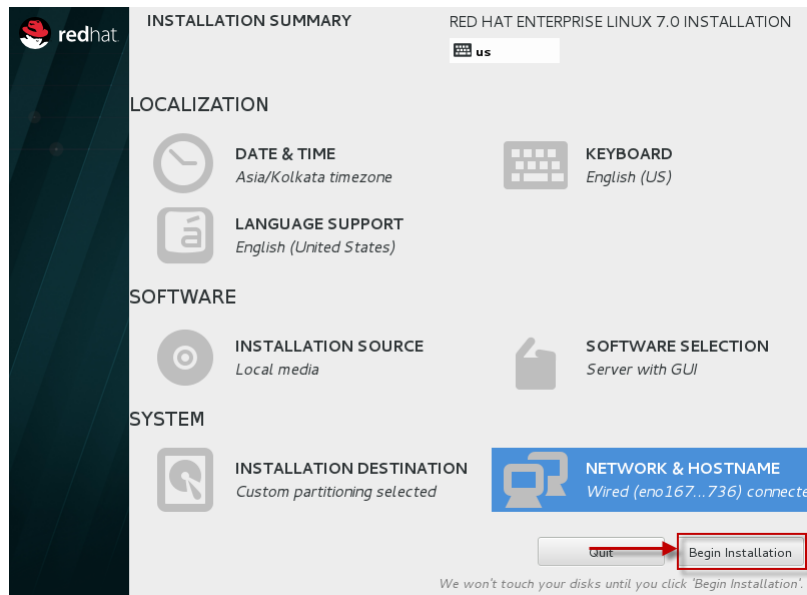
Provide a **hostname** for your machine and enable the [ethernet](#) device. Next select **Configure** to configure network settings for your machine



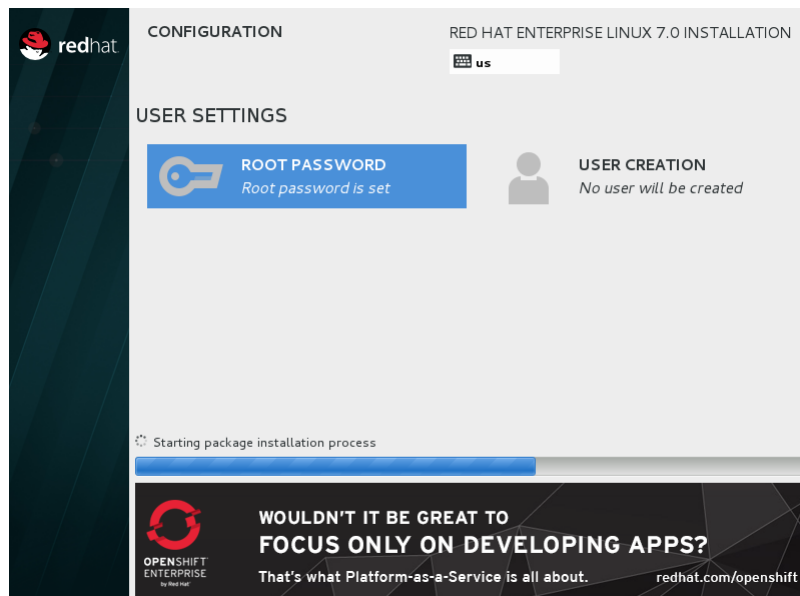
Change the Ethernet device name or else you can skip that part. Next configure you IP details as per your environment i.e IPv4 or IPv6. We are using IPv4 so selected the "IPv4 Settings" and added the IP, Netmask, Gateway and DNS details in the same.. Click on "Done" to save the configuration and go a step back.



So we are done here with all the options on this screen. Next we can "Begin Installation"



As you see the installation has begun in the [mean](#) time you can add a password for your root user. Also you can create additional user by using the "User Creation" thumbnail.



Provide a password for root account.

ROOT PASSWORD RED HAT ENTERPRISE LINUX 7.0 INSTALLATION

[Done](#) us

The root account is used for administering the system. Enter a password for the root user.

Root Password:

Weak

Confirm:


⚠ The password you have provided is weak: The password is shorter than 8 characters. You will have to press Done twice to confirm it.

In the mean time let the installation complete. Once done click on **Reboot**.


CONFIGURATION RED HAT ENTERPRISE LINUX 7.0 INSTALLATION

[Done](#) us

USER SETTINGS



ROOT PASSWORD
Root password is set



USER CREATION
User deepak will be created

Complete!

Red Hat Enterprise Linux is now successfully installed on your system and ready for you to use! Go ahead and reboot to start using it!

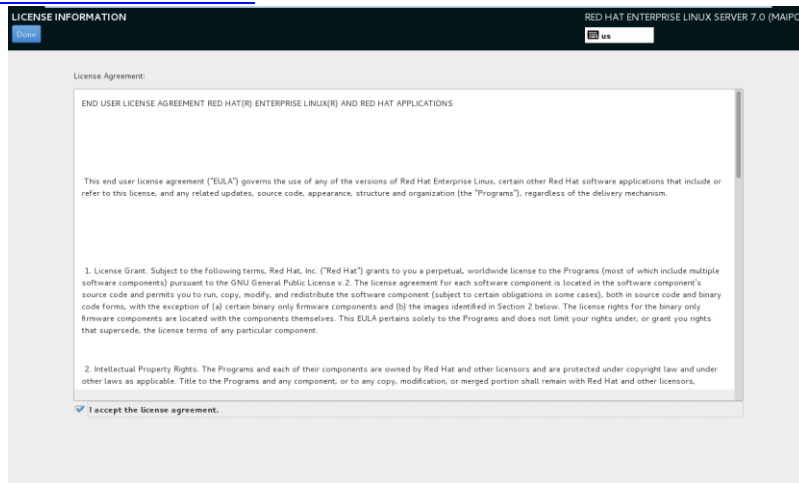
[Reboot](#)

⚠ Use of this product is subject to the license agreement found at `/usr/share/redhat-release/EULA`

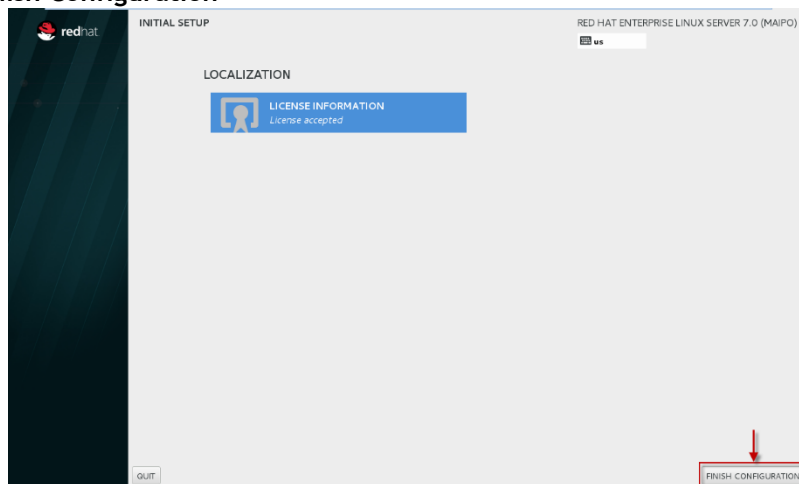
Once the machine reboots, next it will prompt the below screen. Click on "License Information"



Accept the [Terms and Conditions](#)

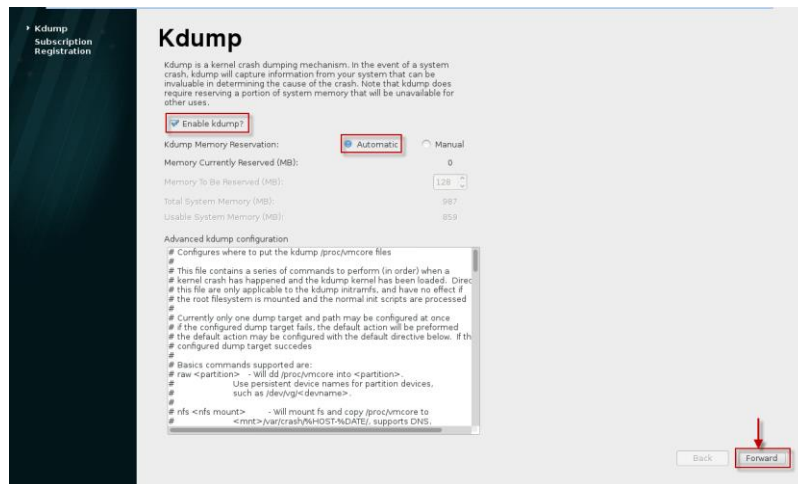


Click on "Finish Configuration"

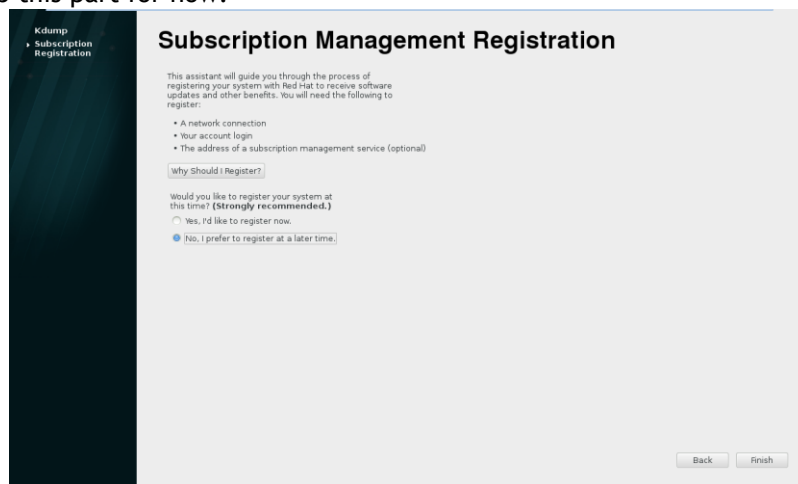


Next you will get the **Kdump** configuration page.

Let us **enable the Kdump** and let the machine decide the amount of memory required for the same.



I do not want to register my system to RHN as for now, also we can [perform](#) this step later so let us skip this part for now.



Next you get your Login Screen which means we have successfully [installed](#) our Operation System i.e. RHEL 7.0 (64 bit).