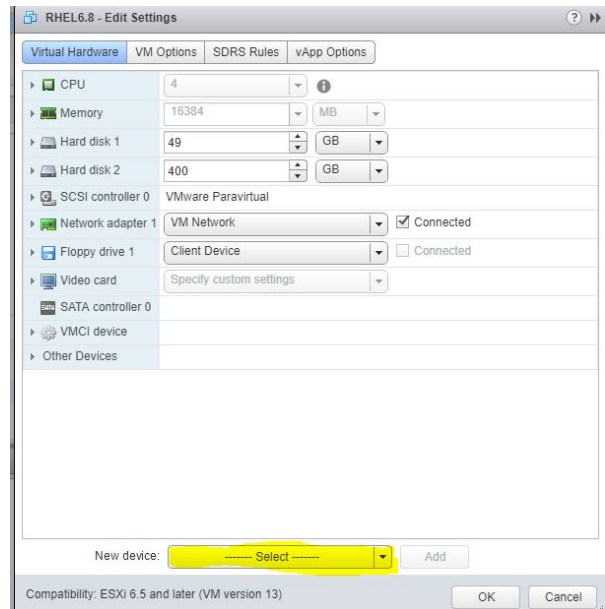
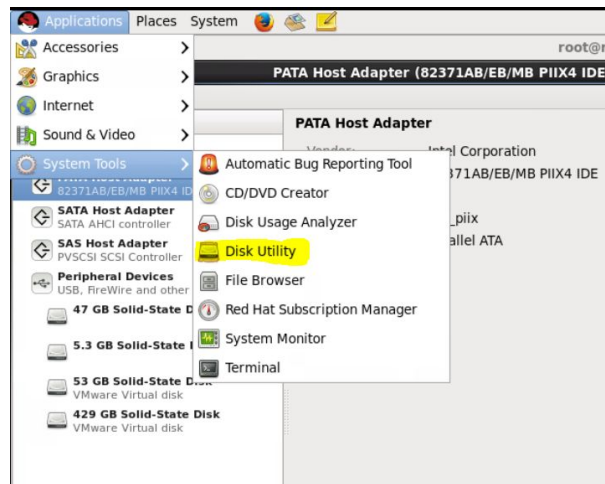


Right click on the VM and click on Edit settings and select new device, Add the disk and select thin provisioning by expanding the disk 2 tab.

Once done, start the VM



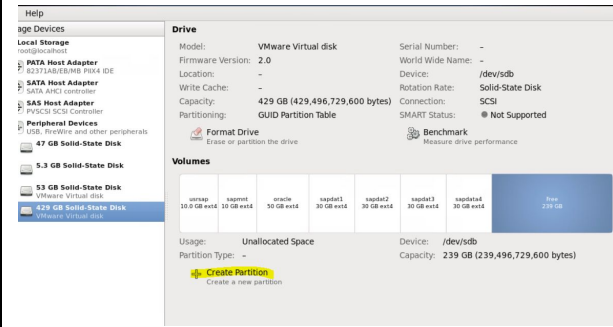
Go to system tools and disk utility



Select the drive and click on format drive→ select GUID partition table



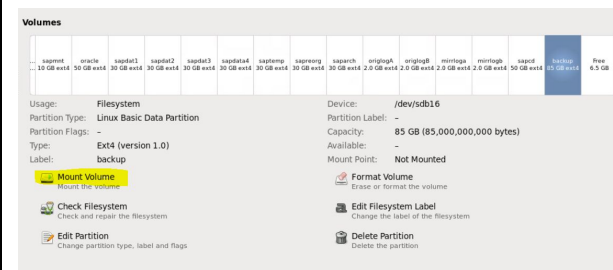
Select free space and click on create partition



Provide the type and name



Mount each volume similarly



In the terminal, create mount points

```
[root@rhel68 SBX]# mkdir sapdata1
[root@rhel68 SBX]# mkdir sapdata2
[root@rhel68 SBX]# mkdir sapdata3
[root@rhel68 SBX]# mkdir sapdata4
[root@rhel68 SBX]# mkdir saptemp
[root@rhel68 SBX]# mkdir sapreorg
[root@rhel68 SBX]# mkdir saparch
[root@rhel68 SBX]# mkdir origlogA
[root@rhel68 SBX]# mkdir origlogB
[root@rhel68 SBX]# mkdir mirrlogA
[root@rhel68 SBX]# mkdir mirrlogB
[root@rhel68 SBX]# cd /
[root@rhel68 /]# mkdir sapcd
[root@rhel68 /]# █
```

Mount the new location and unmount the old location

```
File Edit View Search Terminal Help
[root@rhel68 ~]# df -kh
Filesystem                Size      Used Avail Use% Mounted on
/dev/mapper/vg_rhel68-lv_root
43G  3.3G  38G   9% /
tmpfs                      7.8G  224K  7.8G   1% /dev/shm
/dev/sda1                  477M   40M  412M   9% /boot
/dev/sdb3                   46G   52M   44G   1% /media/oracle
/dev/sdb4                   28G   44M   26G   1% /media/sapdat1
/dev/sdb5                   28G   44M   26G   1% /media/sapdat2
/dev/sdb6                   28G   44M   26G   1% /media/sapdat3
/dev/sdb1                   9.1G   21M   8.6G   1% /usr/sap
/dev/sdb2                   9.1G   21M   8.6G   1% /sapmnt
/dev/sdb7                   28G   44M   26G   1% /media/sapdata4
/dev/sdb8                   28G   44M   26G   1% /media/saptemp
/dev/sdb9                   28G   44M   26G   1% /media/sapreorg
/dev/sdb10                  28G   44M   26G   1% /media/saparch
/dev/sdb11                  1.9G   2.9M   1.8G   1% /media/origlogA
/dev/sdb12                  1.9G   2.9M   1.8G   1% /media/origlogB
/dev/sdb13                  1.9G   2.9M   1.8G   1% /media/mirrlogA
/dev/sdb14                  1.9G   2.9M   1.8G   1% /media/mirrlogB
/dev/sdb15                   46G   52M   44G   1% /media/sapcd
/dev/sdb16                   78G   56M   74G   1% /media/backup
[root@rhel68 ~]# mount /dev/sdb3 /oracle
[root@rhel68 ~]# umount /media/oracle/
[root@rhel68 ~]# █
```

```
File Edit View Search Terminal Help
root@rhe
[root@rhel68 SBX]# df -kh
Filesystem                Size      Used Avail Use% Mounted on
/dev/mapper/vg_rhel68-lv_root
43G  3.3G  38G   9% /
tmpfs                      7.8G  224K  7.8G   1% /dev/shm
/dev/sda1                  477M   40M  412M   9% /boot
/dev/sdb16                  78G   56M   74G   1% /media/backup
/dev/sdb3                   46G   52M   44G   1% /oracle/SBX
/dev/sdb5                   28G   44M   26G   1% /oracle/SBX/sapdata2
/dev/sdb6                   28G   44M   26G   1% /oracle/SBX/sapdata3
/dev/sdb7                   28G   44M   26G   1% /oracle/SBX/sapdata4
/dev/sdb8                   28G   44M   26G   1% /oracle/SBX/saptemp
/dev/sdb9                   28G   44M   26G   1% /oracle/SBX/sapreorg
/dev/sdb10                  28G   44M   26G   1% /oracle/SBX/saparch
/dev/sdb12                  1.9G   2.9M   1.8G   1% /oracle/SBX/origlogB
/dev/sdb13                  1.9G   2.9M   1.8G   1% /oracle/SBX/mirrlogA
/dev/sdb14                  1.9G   2.9M   1.8G   1% /oracle/SBX/mirrlogB
/dev/sdb15                   46G   52M   44G   1% /sapcd
/dev/sdb11                  1.9G   2.9M   1.8G   1% /oracle/SBX/origlogA
/dev/sdb1                   9.1G   21M   8.6G   1% /usr/sap/SBX
/dev/sdb2                   9.1G   21M   8.6G   1% /sapmnt/SBX
/dev/sdb4                   28G   44M   26G   1% /oracle/SBX/sapdata1
[root@rhel68 SBX]# fstab
bash: fstab: command not found
[root@rhel68 SBX]# cd /etc/
[root@rhel68 etc]# vi fstab
[root@rhel68 etc]# █
```