

How to Migrate from vSS to vDS

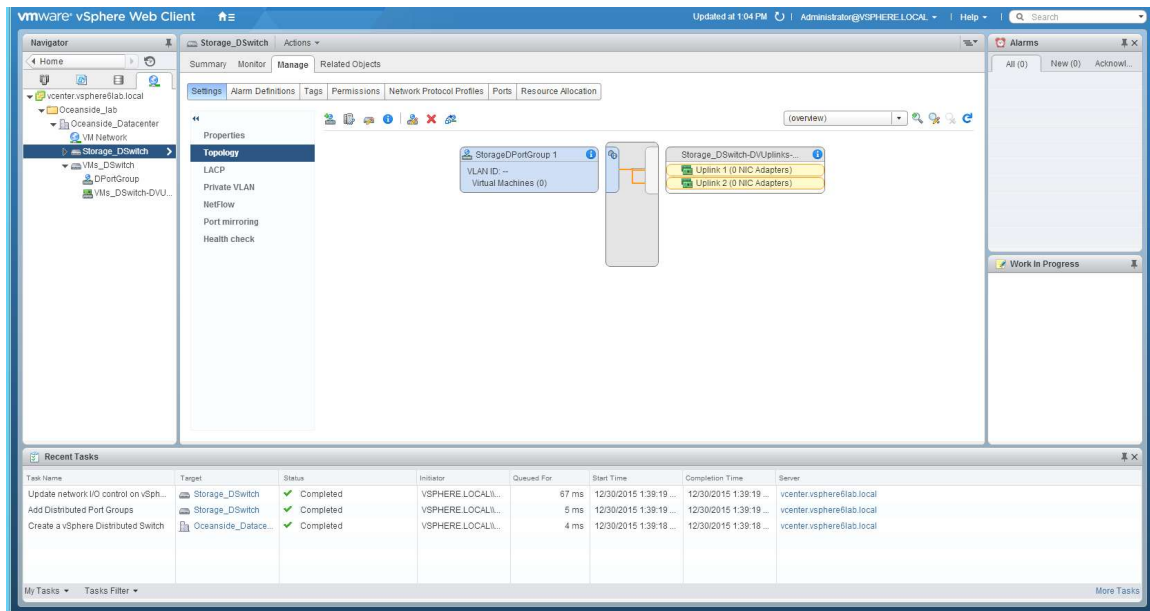
This post is taking from my blogsite : (<http://vpentathlon.com/updating-my-lab-to-use-vds-only/>) when i was migrating my home lab from vSS to vDS.

The plan:

1. Create a new Switch with new DPortGroup
2. Add hosts to the Switch i also make sure to check the configure identical network setting box
3. Manage the physical adapters
4. Manage the VMkernel adapters:
 - (i) Move the associate management vmnic to the management dvport on your vDS.
 - (ii) e-assign the VMkernel adapters and their IP's to the new dvport group and apply to all hosts.

Screenshots walkthrough

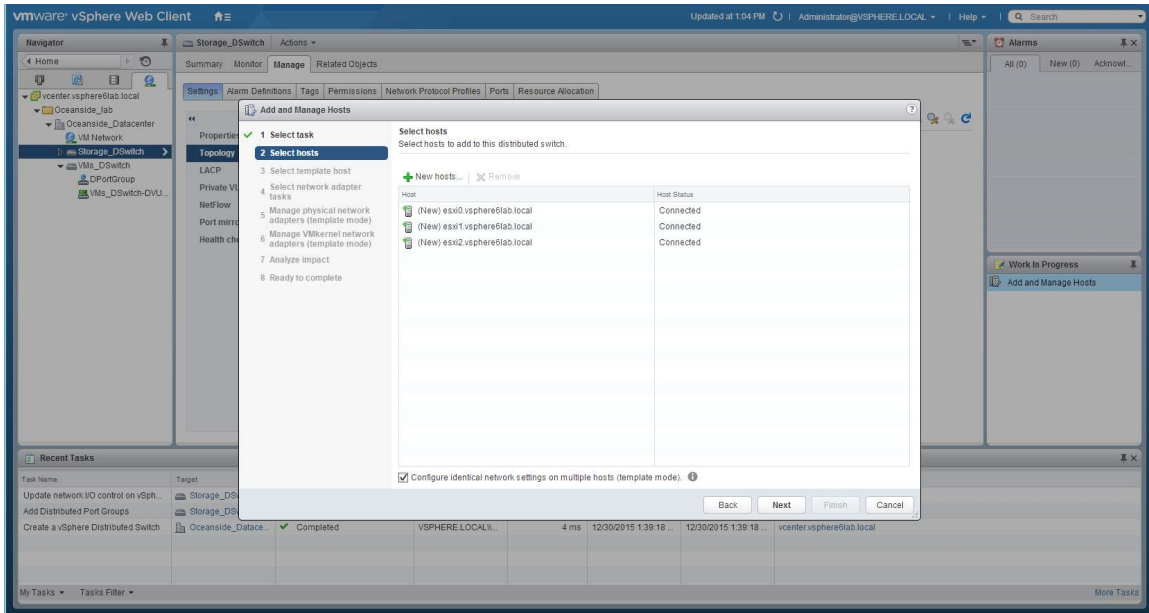
Creating new vDS



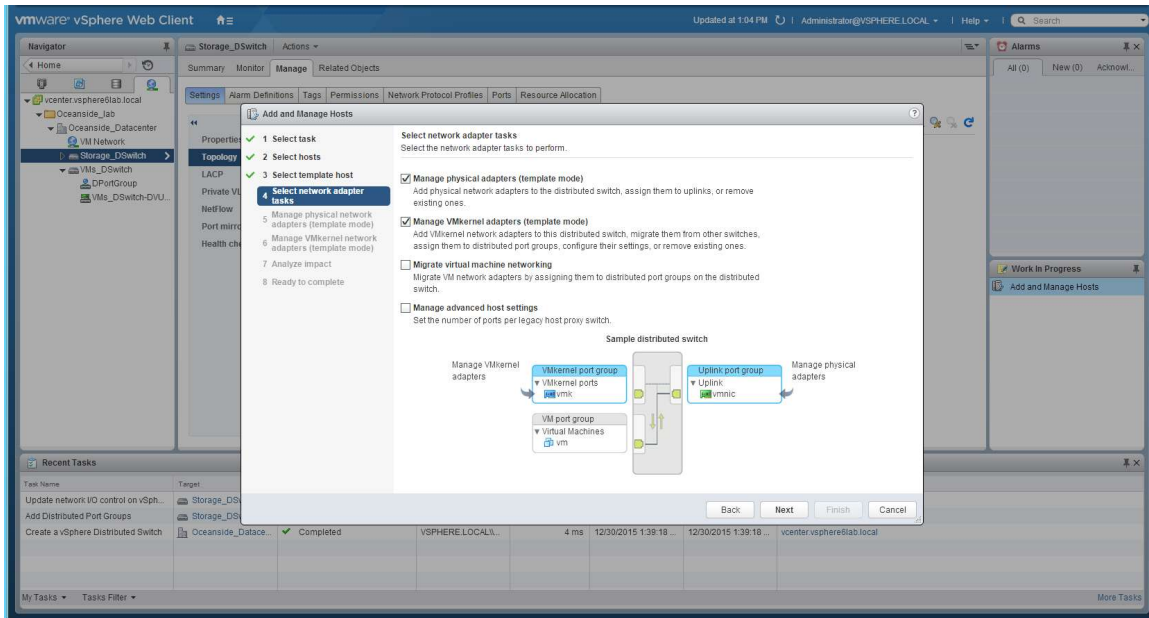
The screenshot displays the VMware vSphere Web Client interface. The main window shows the configuration of a new vDS (Storage_DSwitch). The left sidebar shows the navigation tree with the vDS selected. The main pane shows the 'Topology' tab, which displays a diagram of the vDS configuration. The diagram shows a 'Storage_DSwitch' with a 'StorageDPortGroup 1' and two 'Uplink' adapters (Uplink 1 and Uplink 2). The 'Properties' pane on the left shows the 'Topology' section with options for LACP, Private VLAN, NetFlow, Port mirroring, and Health check. The 'Recent Tasks' pane at the bottom shows a list of tasks completed, including 'Update network I/O control on vSph...', 'Add Distributed Port Groups', and 'Create a vSphere Distributed Switch', all with a status of 'Completed'.

Task Name	Target	Status	Initiator	Queued For	Start Time	Completion Time	Server
Update network I/O control on vSph...	Storage_DSwitch	Completed	VSPHERE LOCAL...	67 ms	12/30/2015 1:39:19 ...	12/30/2015 1:39:19 ...	vcenter.vsphere@lab.local
Add Distributed Port Groups	Storage_DSwitch	Completed	VSPHERE LOCAL...	5 ms	12/30/2015 1:39:19 ...	12/30/2015 1:39:19 ...	vcenter.vsphere@lab.local
Create a vSphere Distributed Switch	Oceanside_Datace...	Completed	VSPHERE LOCAL...	4 ms	12/30/2015 1:39:18 ...	12/30/2015 1:39:18 ...	vcenter.vsphere@lab.local

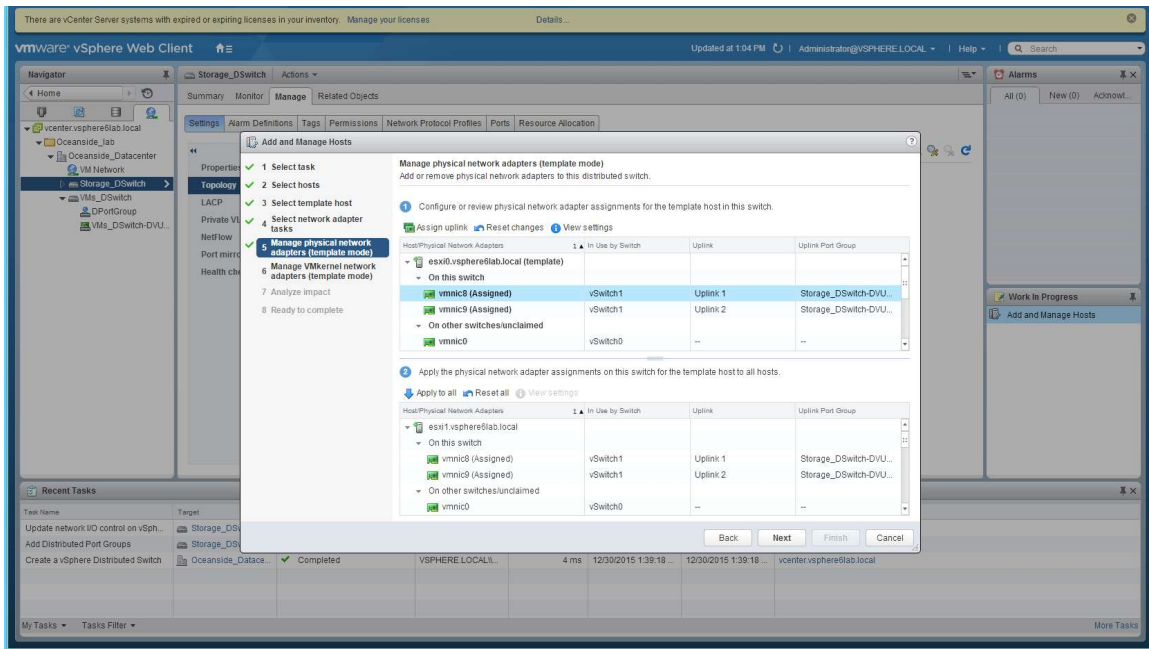
Adding all of my three hosts



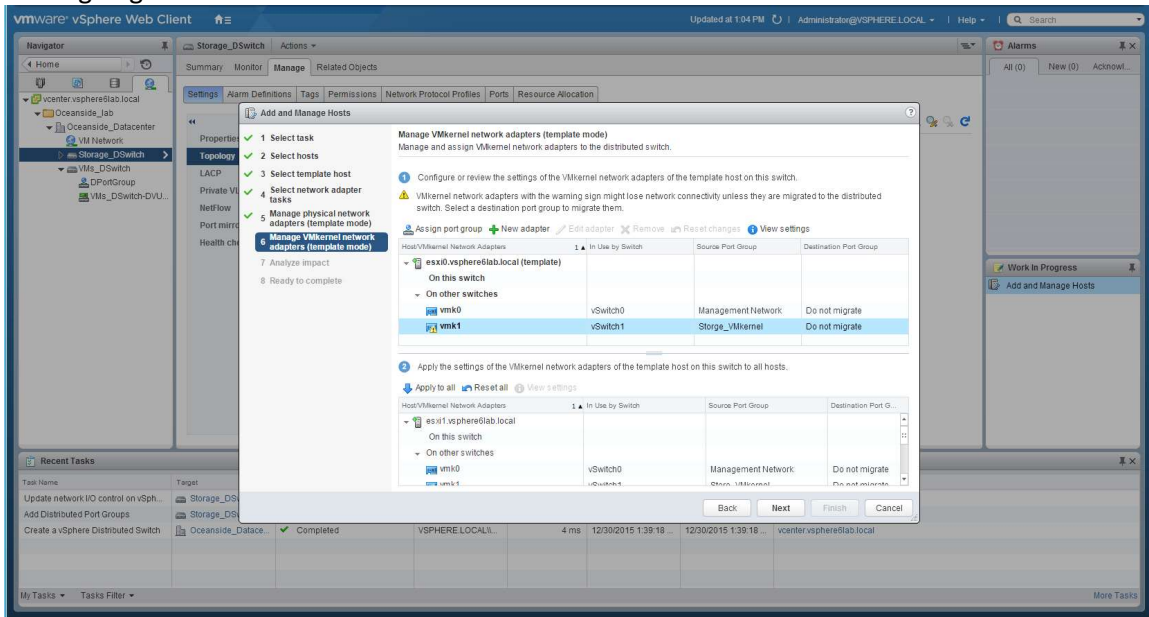
Selecting to manage Physical and VMKernel



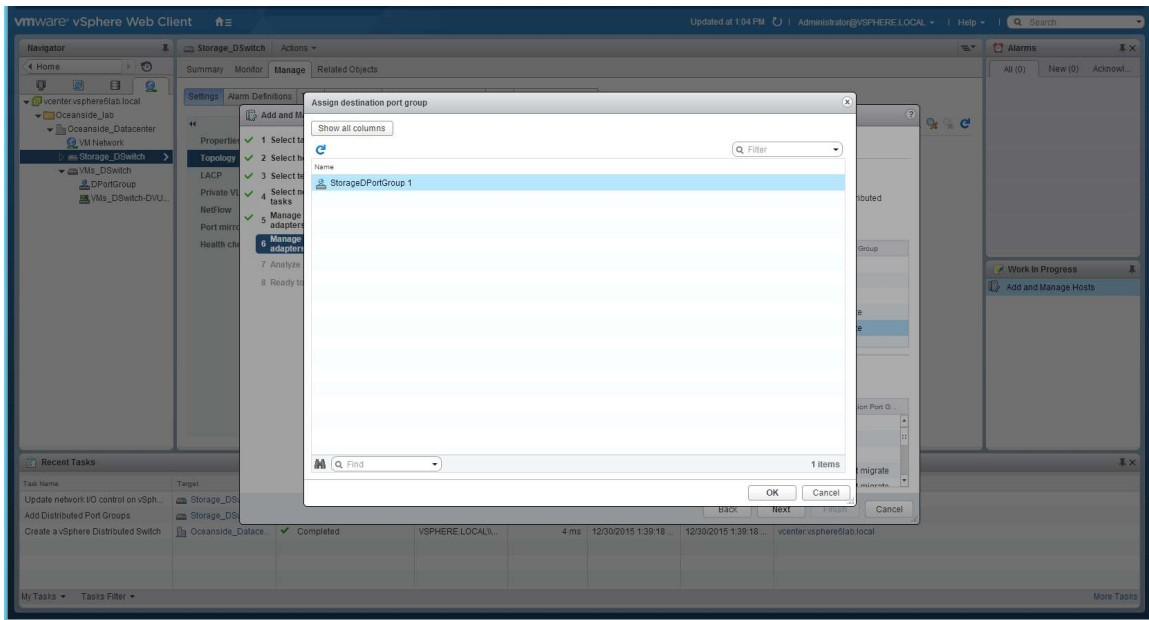
Reassigning vmnic8 and vmnic9



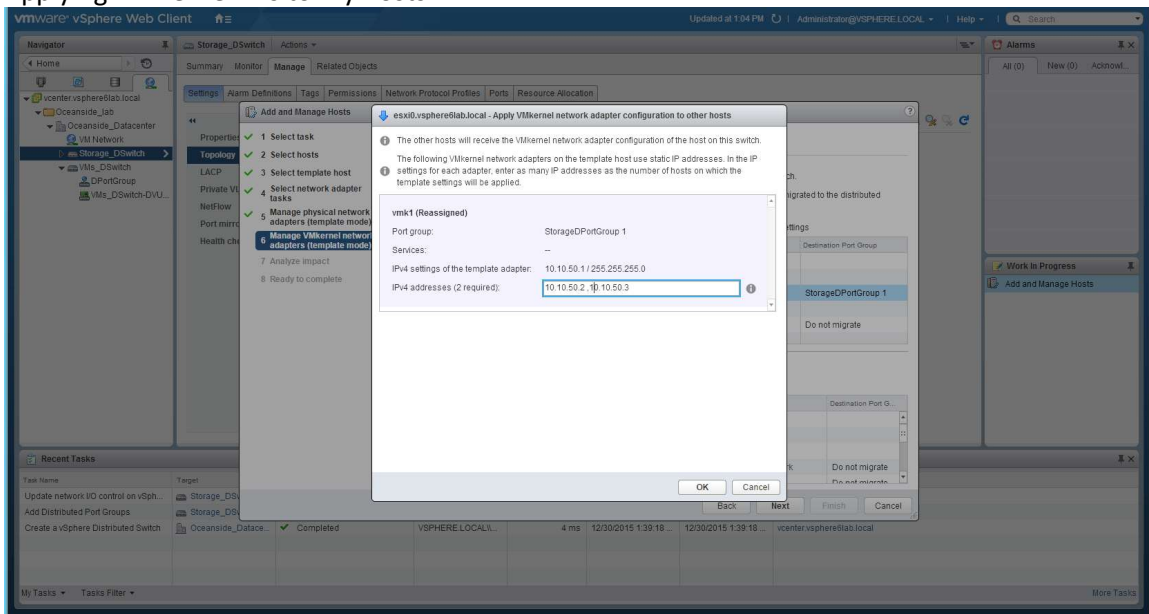
Reassigning vmk1



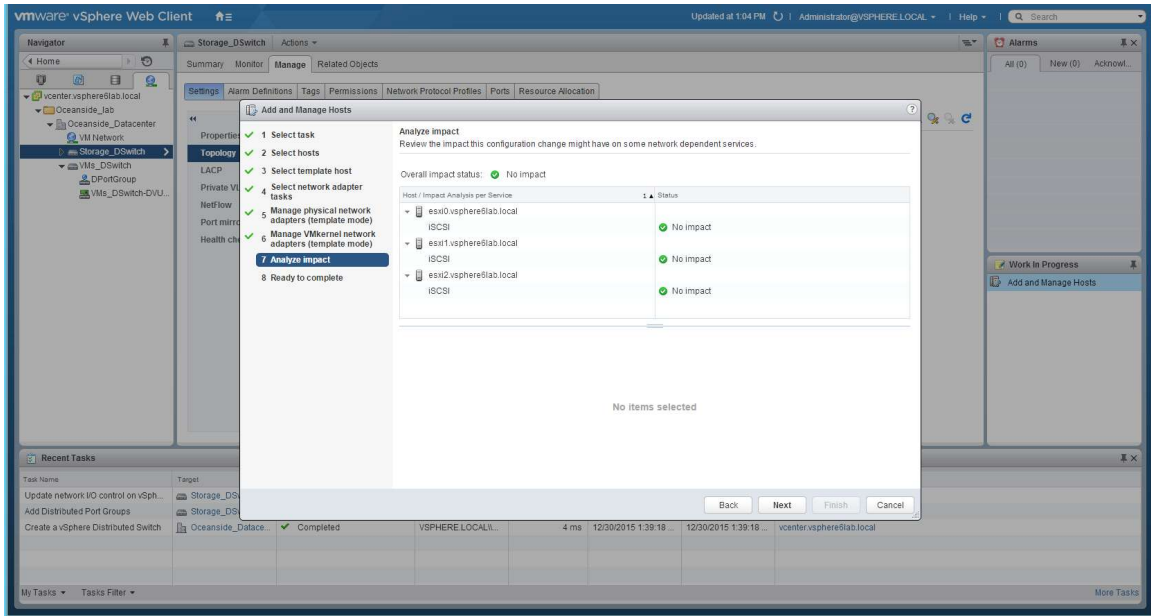
Selecting the DportGroup for vmk1



Applying VMkernel IP's to my hosts



Looking for now issues in my iSCSI network



Final Results

