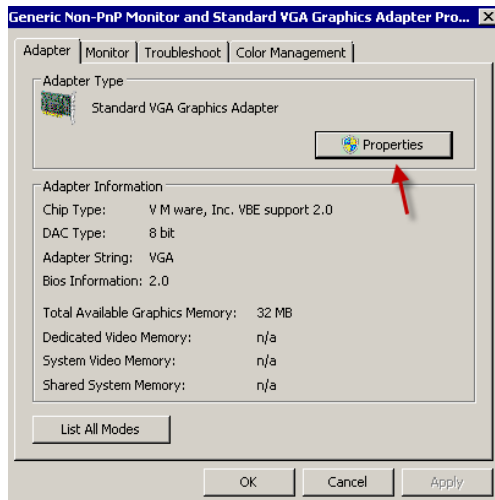
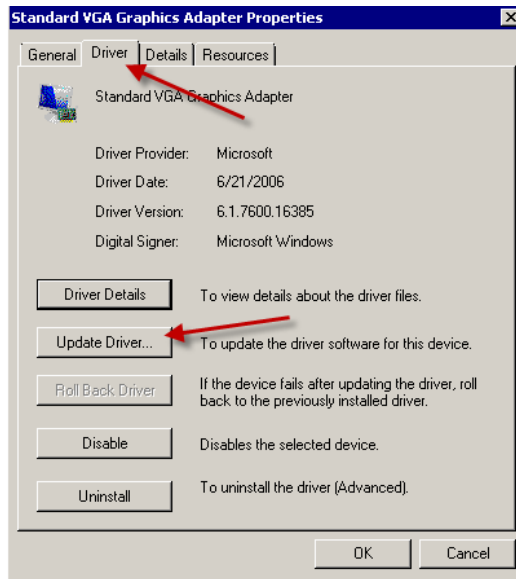


Updating the video driver

1. Launch device manager via Control Panel. (Select Hardware). (Or just run devmgmt.msc)
2. Select Display
3. Choose Display Settings
4. Advanced Settings
5. Under Adapter select properties



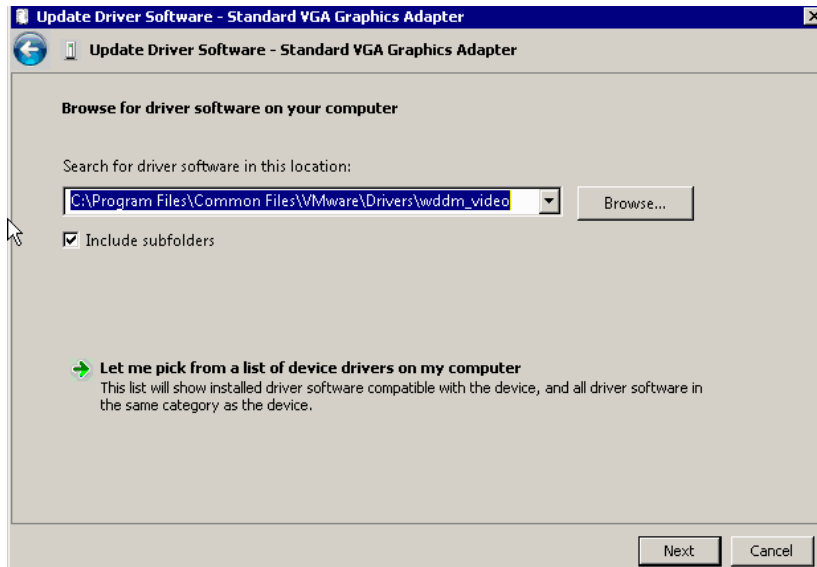
6. Select Driver, then Update Driver



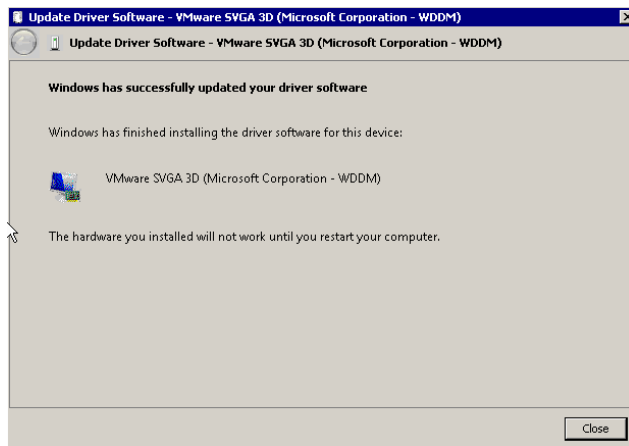
7. Select Browse my computer for driver software

8. Select the directory:

C:\Program Files\Command Files\VMware\Driver\wddm_video



9. You will then be shown a new driver has been installed.



10. Close out windows – you will be prompted to reboot. Reboot.