

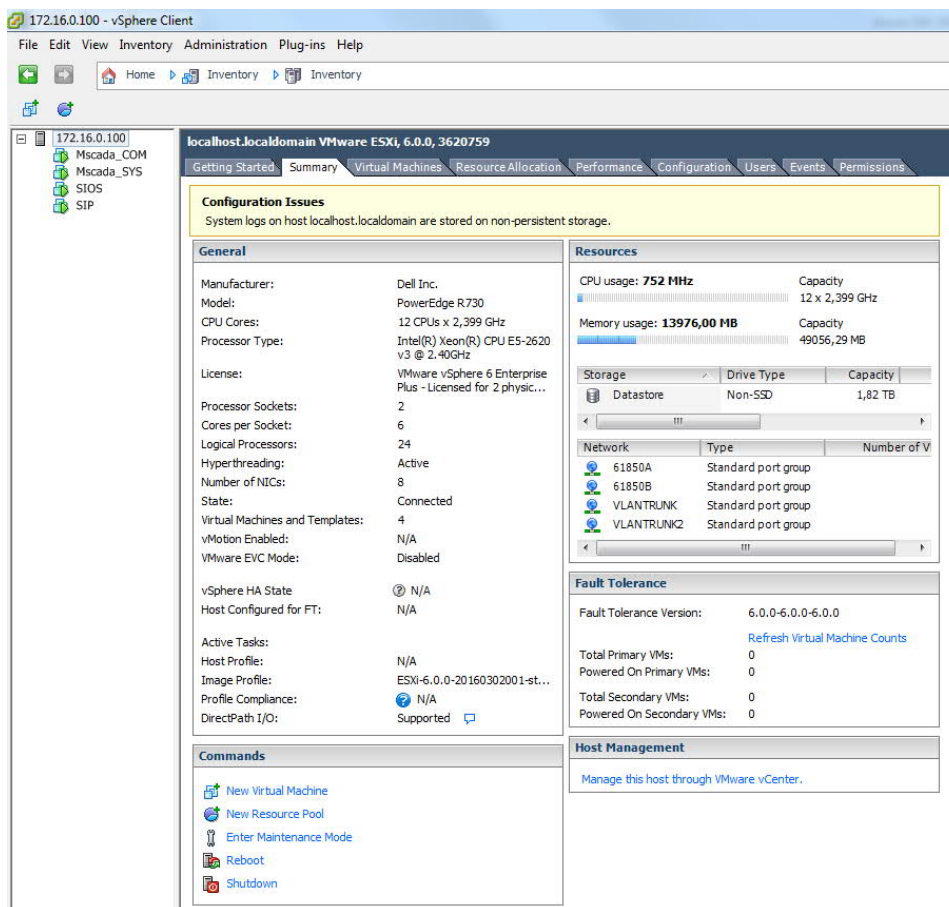
VMware Version

vSphere Client 6.0.0

VMware ESXi 6.0.0



SUMMARY INFORMATIONS



Virtual MACHINES LIST

172.16.0.100 - vSphere Client

localhost.localdomain VMware ESXi, 6.0.0, 3620759

Name	State	Provisioned Space	Used Space	Host CPU - MHz	Host Mem - MB	Guest Mem - %	Notes
SIP	Powered On	112,18 GB	112,18 GB	309	4635	3	
Mscada_COM	Powered On	112,19 GB	112,19 GB	100	2317	2	
Mscada_SYS	Powered On	112,18 GB	112,18 GB	153	2630	0	
SIOS	Powered On	112,19 GB	112,19 GB	12	2084	0	

Resource application

172.16.0.100 - vSphere Client

localhost.localdomain VMware ESXi, 6.0.0, 3620759

**CPU**

Total Capacity: **25340 MHz**

Reserved Capacity: **0 MHz**

Available Capacity: **25340 MHz**

**Memory**

Total Capacity: **43419 MB**

Reserved Capacity: **402 MB**

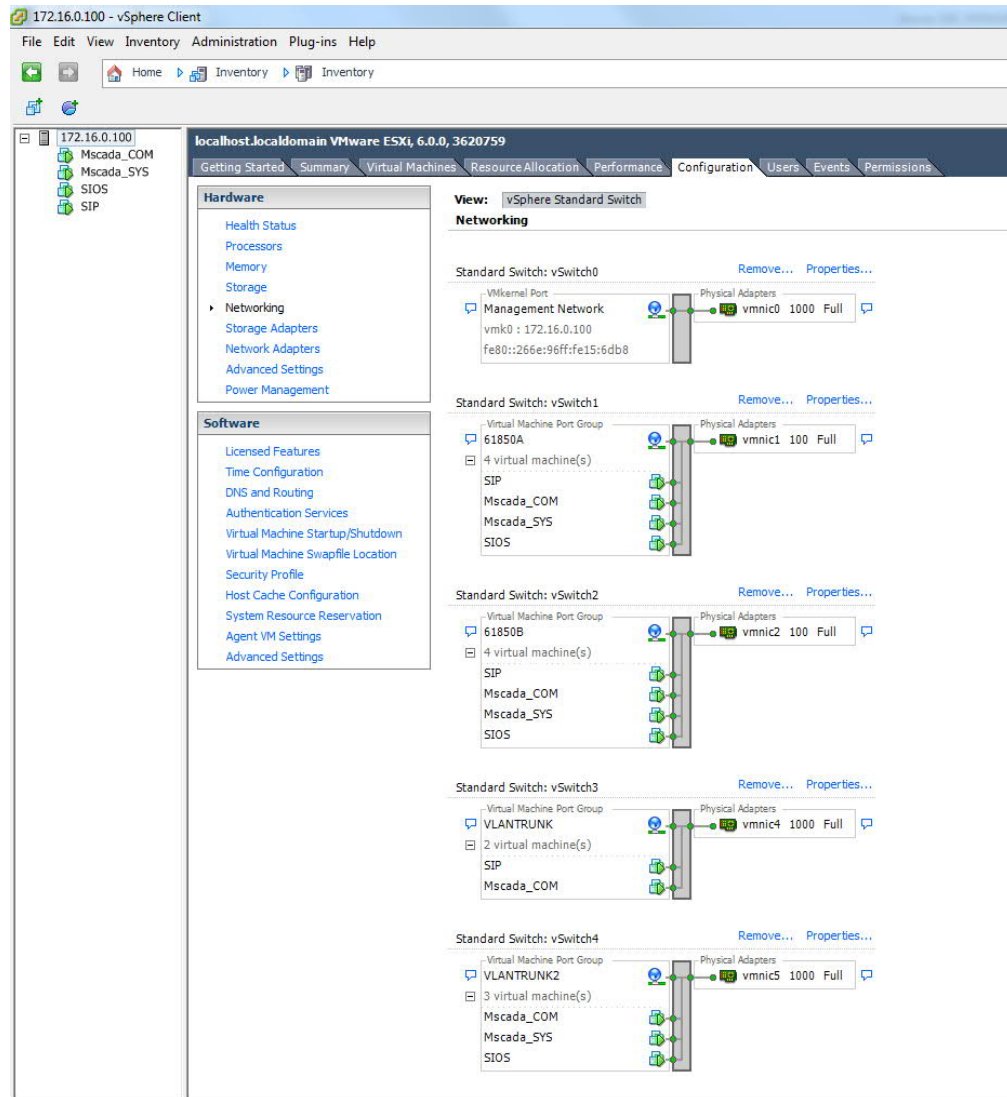
Available Capacity: **43017 MB**

View: CPU Memory Storage

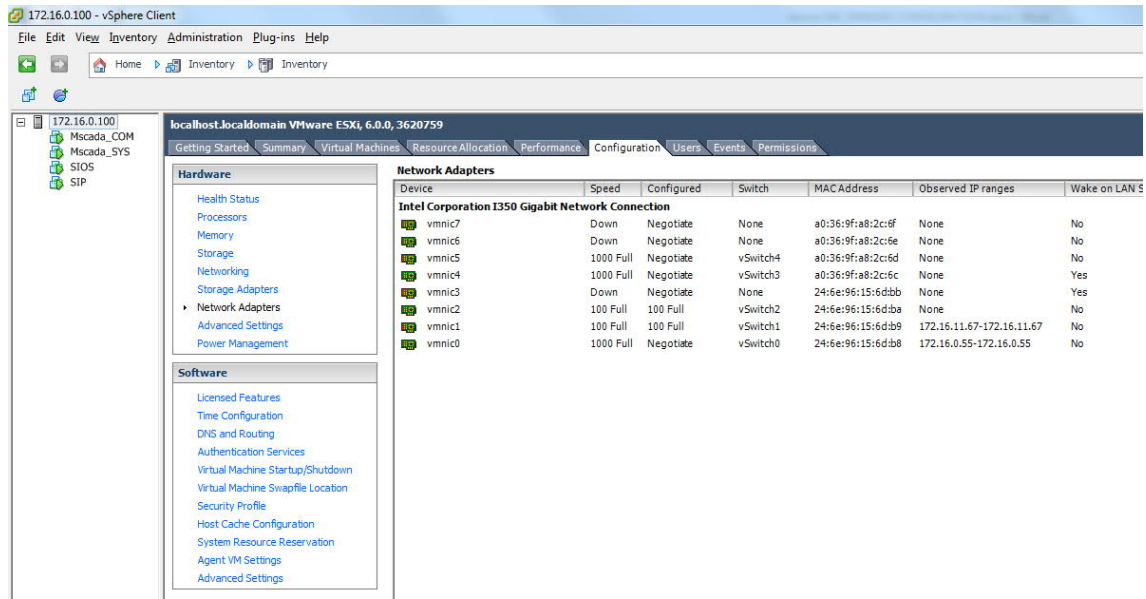
Name	Reservation - MHz	Limit - MHz	Shares	Shares Value	% Shares	Type
Mscada_SYS	0	Unlimited	Normal	2000	25	N/A
SIOS	0	Unlimited	Normal	2000	25	N/A
Mscada_COM	0	Unlimited	Normal	2000	25	N/A
SIP	0	Unlimited	Normal	2000	25	N/A

CONFIGURATION - HARDWARE SETTINGS

Networking configuration (temporary)(1)

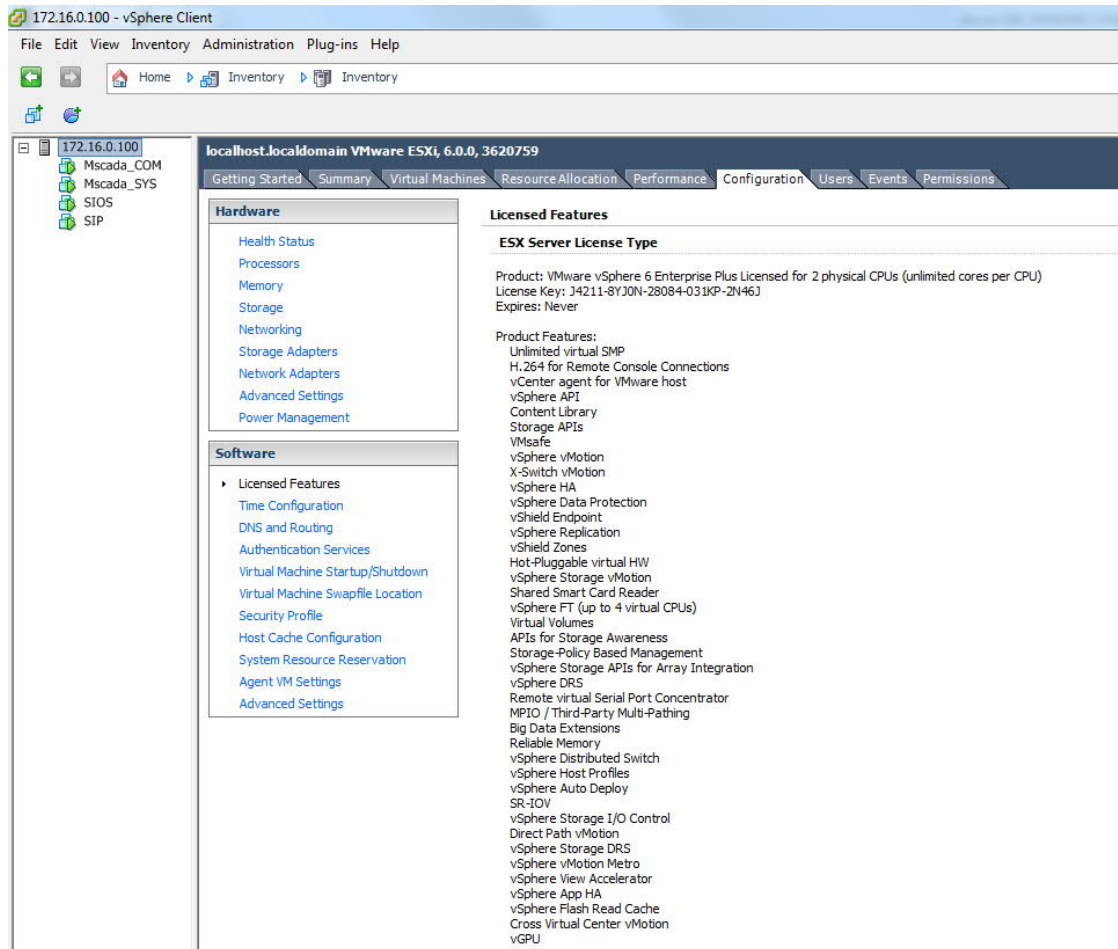


Network adapters (temporary).

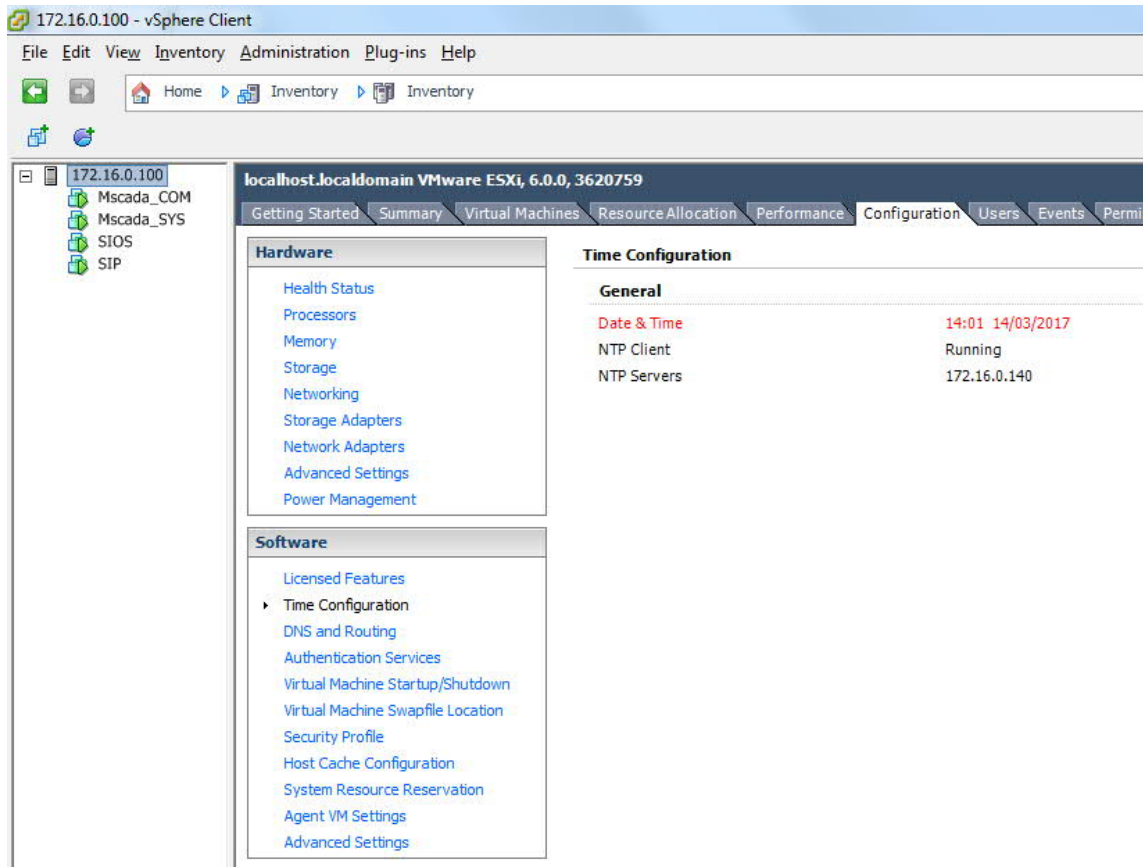


CONFIGURATION - SOFTWARE SETTINGS

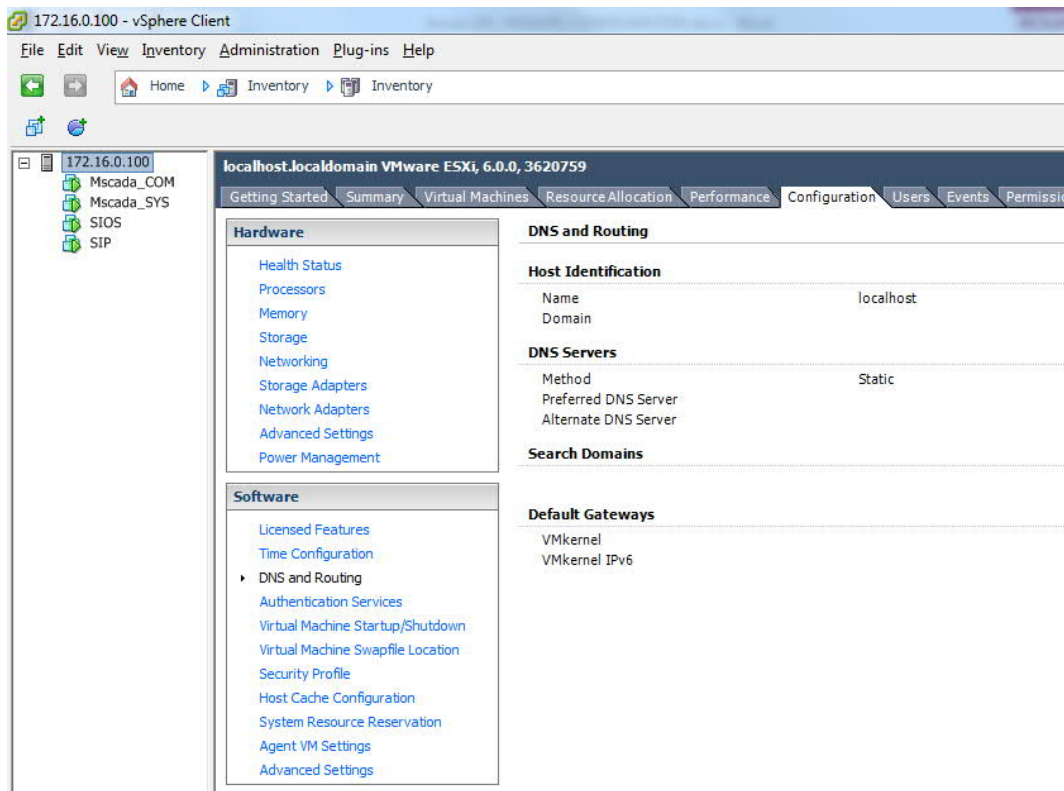
Licensed features



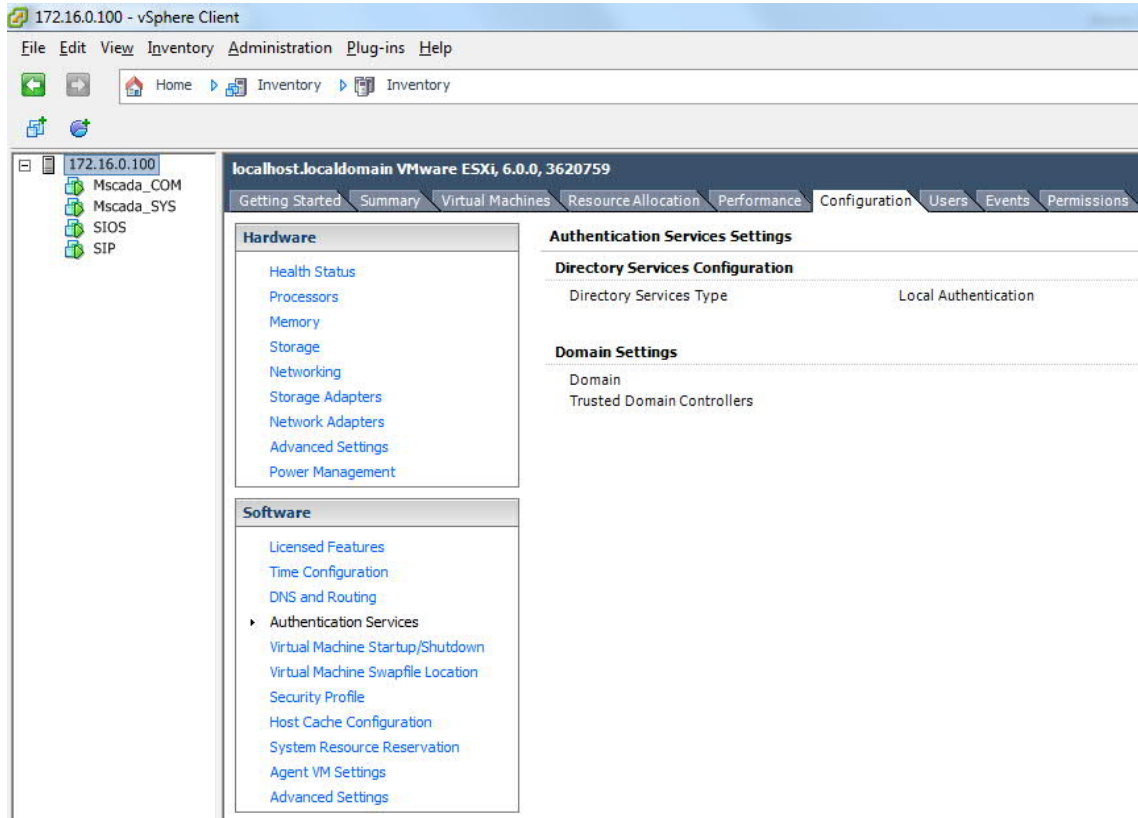
Time Configuration



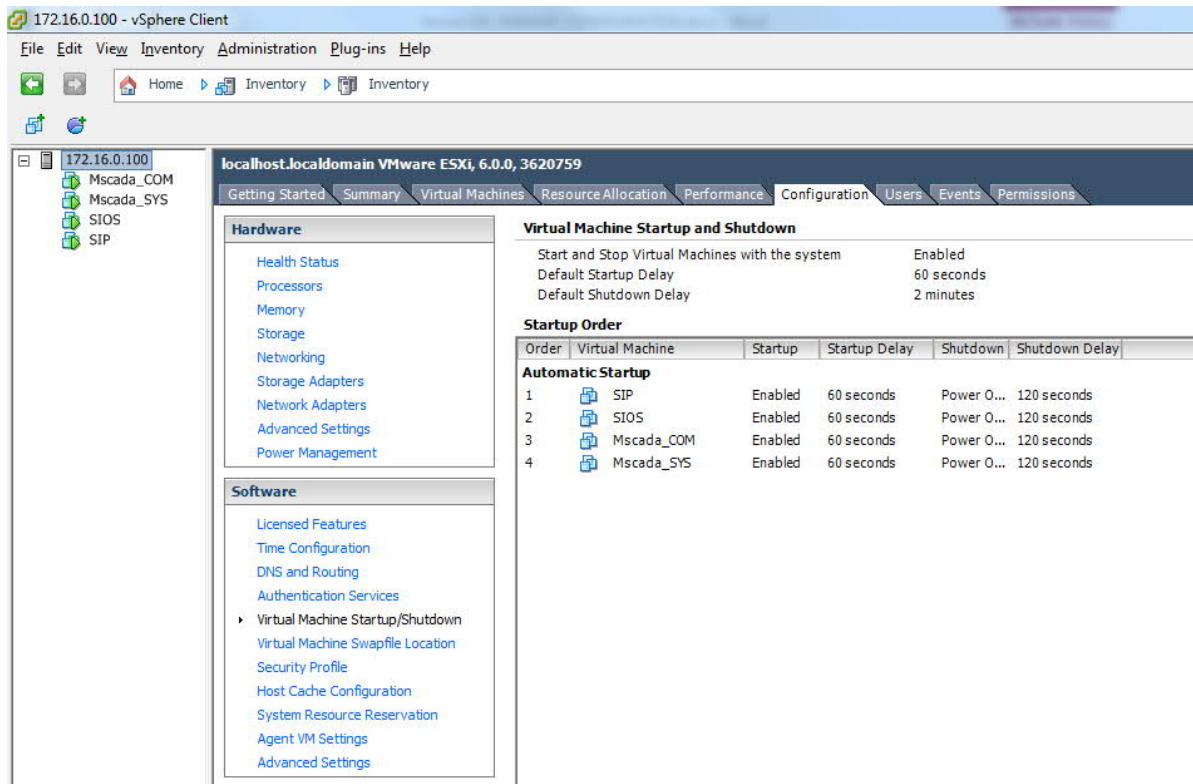
DNS and Routing



Authentication services



Startup/Shutdown virtual machines





Security Profile

The screenshot shows the vSphere Client interface for a VMware ESXi host. The left sidebar shows the inventory tree with folders for Mscada\_COM, Mscada\_SYS, SIOS, and SIP. The main content area is titled 'localhost.localdomain VMware ESXi, 6.0.0, 3620759' and has tabs for Getting Started, Summary, Virtual Machines, Resource Allocation, Performance, Configuration, Users, Events, and Permissions. The 'Configuration' tab is active, showing 'Hardware' and 'Software' sections on the left. The 'Security Profile' section is expanded, showing 'Services' and 'Firewall' settings.

**Hardware**

- Health Status
- Processors
- Memory
- Storage
- Networking
- Storage Adapters
- Network Adapters
- Advanced Settings
- Power Management

**Software**

- Licensed Features
- Time Configuration
- DNS and Routing
- Authentication Services
- Virtual Machine Startup/Shutdown
- Virtual Machine Swapfile Location
- Security Profile
- Host Cache Configuration
- System Resource Reservation
- Agent VM Settings
- Advanced Settings

**Security Profile**

**Services**

- SNMP Server
- PC/SC Smart Card Daemon
- Load-Based Teaming Daemon
- ESXi Shell
- X.Org Server
- VMware vCenter Agent
- NTP Daemon
- Active Directory Service
- VProbe Daemon
- SSH
- Syslog Server
- Direct Console UI
- CIM Server

**Firewall**

**Incoming Connections**

Service	Ports	Protocol	Action
CIM Server	5988	TCP	All
DHCP Client	68	UDP	All
SNMP Server	161	UDP	All
SSH Server	22	TCP	All
vSphere Web Client	902,443	TCP	All
DNS Client	53	UDP	All
vsanvp	8080	TCP	All
Virtual SAN Transport	2233	TCP	All
vMotion	8000	TCP	All
NFC	902	TCP	All
CIM SLP	427	UDP,TCP	All
DVSSync	8301,8302	UDP	All
DHCPv6	546	TCP,UDP	All
Virtual SAN Clustering Service	12345,23451,12321	UDP	All
CIM Secure Server	5989	TCP	All
vSphere Web Access	80	TCP	All
Fault Tolerance	8100,8200,8300	TCP,UDP	All

**Outgoing Connections**

Service	Ports	Protocol	Action
Software iSCSI Client	3260	TCP	All
DHCP Client	68	UDP	All
DNS Client	53	UDP,TCP	All
VMware vCenter Agent	902	UDP	All
vsanvp	8080	TCP	All
Virtual SAN Transport	2233	TCP	All
vMotion	8000	TCP	All
NFC	902	TCP	All
rabbitmqproxy	5671	TCP	All
DVSSync	8302,8301	UDP	All
DHCPv6	547	TCP,UDP	All
HBR	31031,44046	TCP	All
vCenter Update Manager	80,9000-9100	TCP	All
NTP Client	123	UDP	All
Virtual SAN Clustering Service	12345,23451,12321	UDP	All
CIM SLP	427	UDP,TCP	All

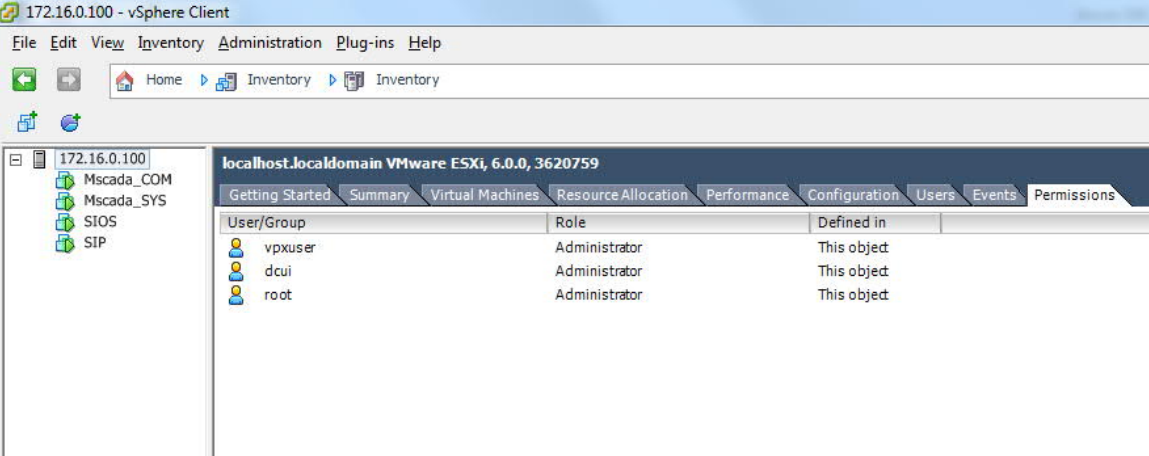
Users

The screenshot shows the vSphere Client interface for a VMware ESXi host. The left sidebar shows the inventory tree with folders for Mscada\_COM, Mscada\_SYS, SIOS, and SIP. The main content area is titled 'localhost.localdomain VMware ESXi, 6.0.0, 3620759' and has tabs for Getting Started, Summary, Virtual Machines, Resource Allocation, Performance, Configuration, Users, and Events. The 'Users' tab is active, showing a table of users.

**Users**

User	Name
root	Administrator
vpxuser	VMware VirtualCenter administration account
dcui	DCUI User

## Permission

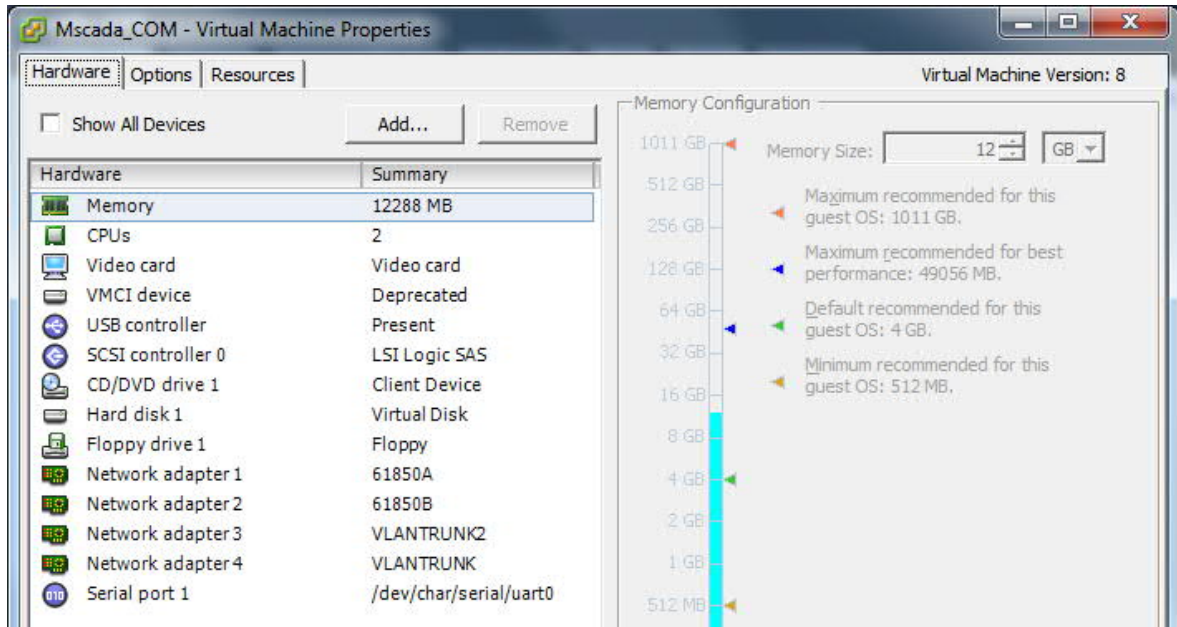


User/Group	Role	Defined in
vpxuser	Administrator	This object
dcui	Administrator	This object
root	Administrator	This object

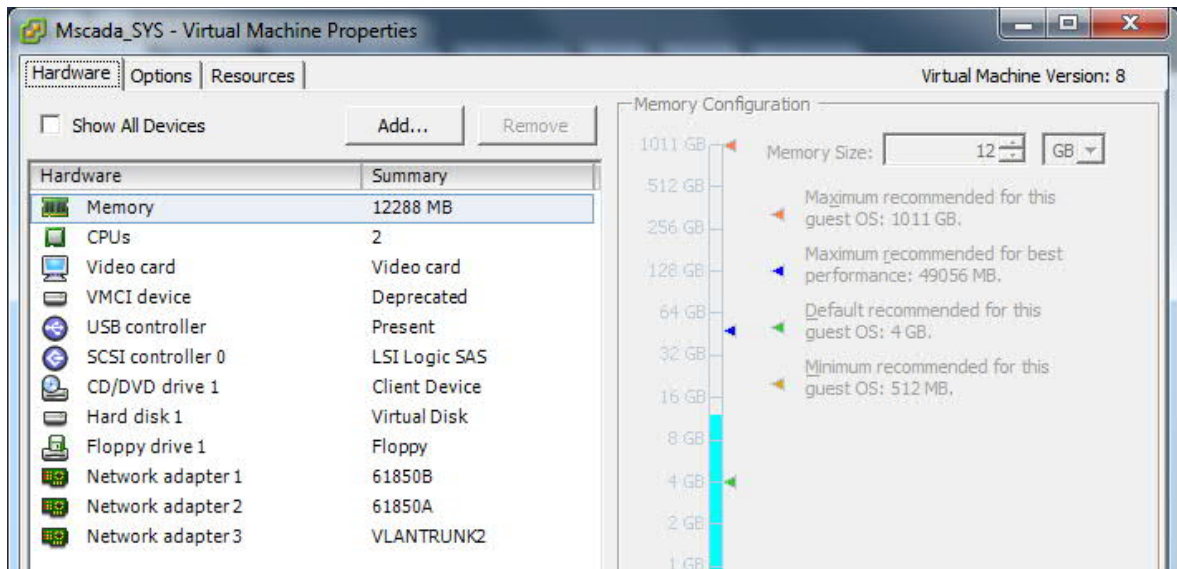


Virtual MACHINE PROPERTIES

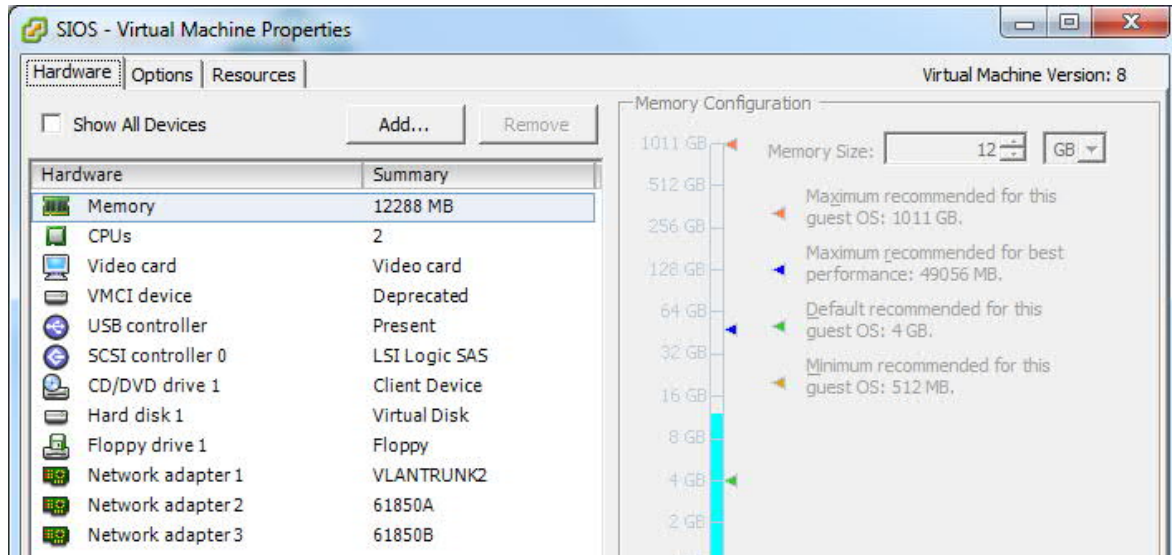
Mscada – COM (GATEWAY)



Mscada\_SYS



SIOS – Disturbance recorder



SIP – IED software configuration

