
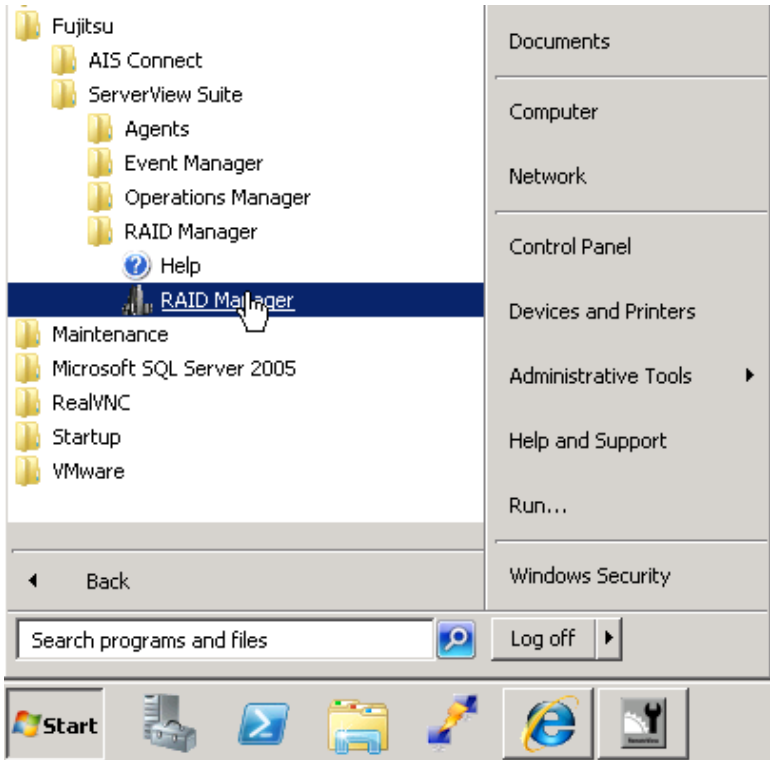




ServerView RAID connection to ESXi

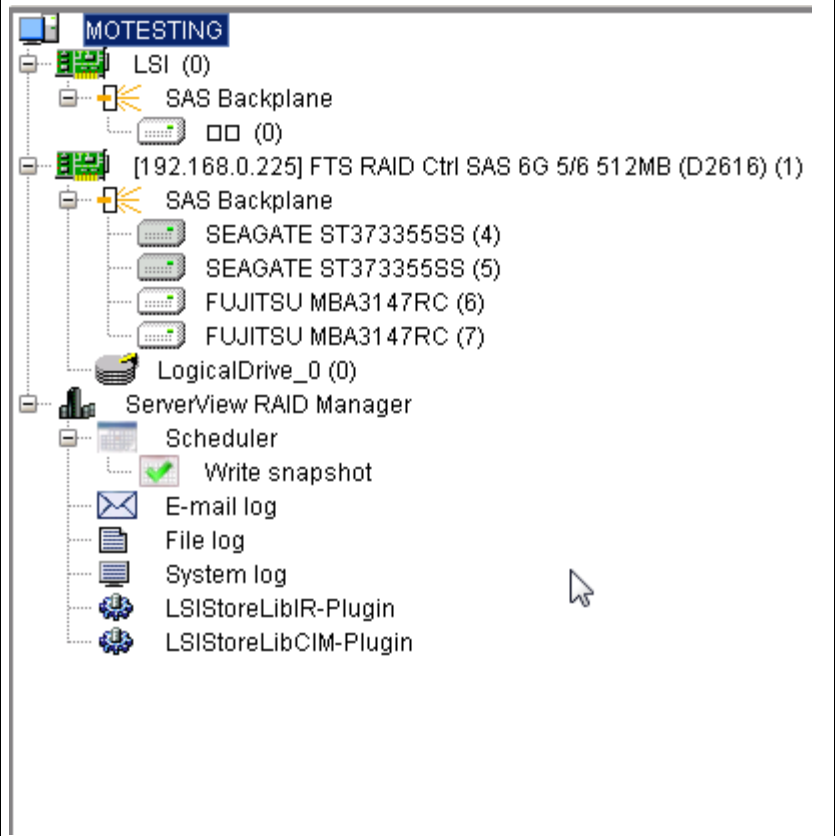
As we are not able to install ServerView RAID Manager onto the local ESXi host we need a way to manage the RAID subsystem remotely.

To do this ServerView RAID can connect to the ESXi host using the following procedure. Before carrying out this process ensure you have either disabled the firewall on your Central Management Station or have opened port 5989 on the firewall.

1) Logon on to your Central Management Station.	
<div style="border: 1px solid black; padding: 5px;"> ServerView RAID Manager should be installed on the CMS, if it is not the please install it now.</div>	
2) Go to “Start → All Programs → Fujitsu → RAID Manager → RAID Manager”	
3) Logon to ServerView RAID using the administrator credentials of the Central Management Station.	<div style="border: 1px solid black; padding: 10px;"><h3 style="text-align: center;">ServerView RAID Manager</h3><div style="display: flex; justify-content: space-between; align-items: flex-start;"><div style="text-align: right;"><p>System login </p><p>Username: <input type="text" value="administrator"/></p><p>Password: <input type="password" value="●●●●●●●●"/></p><p style="text-align: center;"><input type="button" value="Login"/></p></div></div></div>

<p>i</p>	<p>You are able to see the local RAID hardware of your CMS if you are on a physical machine.</p>	
<p>i</p>	<p>If you are installing ServerView RAID on a VM then you will just see a blank RAID Controller with nothing connected to it</p>	
<p>4) Close ServerView RAID Manager</p>		
<p>5) Open a command prompt.</p>		
<p>6) Navigate to the "RAID Manager" folder</p>		
<pre>cd\Program Files (x86)\Fujitsu\ServerView Suite\RAID Manager\bin</pre>		
<p>7) Add the ESX host to the local ServerView RAID Manager</p>		
<pre>amCLI -e 21/0 add_server name=<ESXi_IP> port=5989 username=root password=<ESXi root password></pre>		
<p>8) Restart the ServerView RAID Service.</p>		

9) Logon onto ServerView RAID Manager. You can now see your server has been added.



It is possible to add upto 128 ESXi servers to a single ServerView RAID Manager instance. After making any changes to the configuration it is necessary to restart the ServerView RAID Manager (amService) service.