

Implementazione VMware vCenter HeartBeat 6.6 update 1

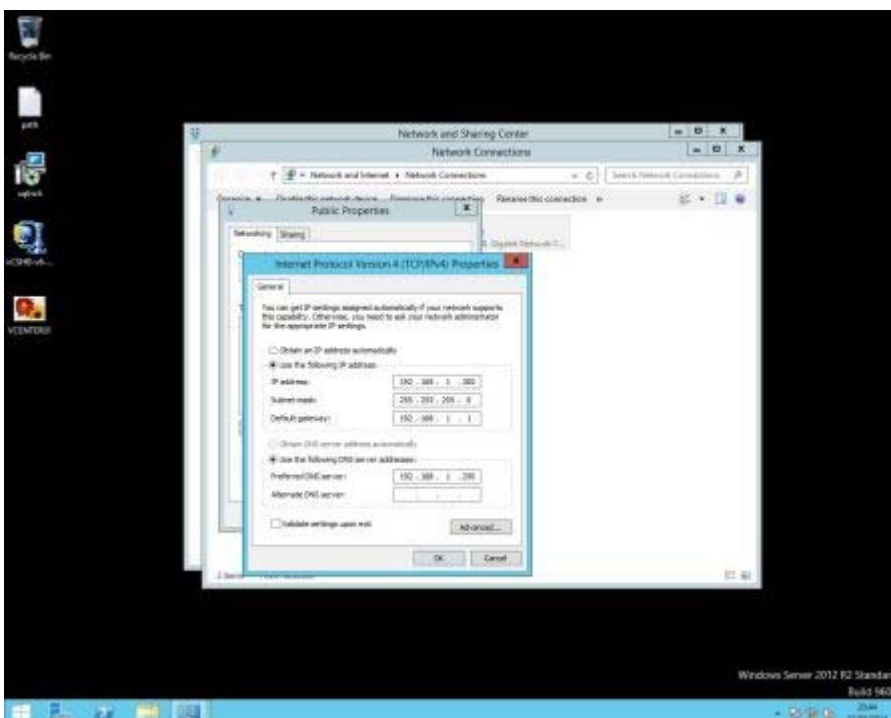
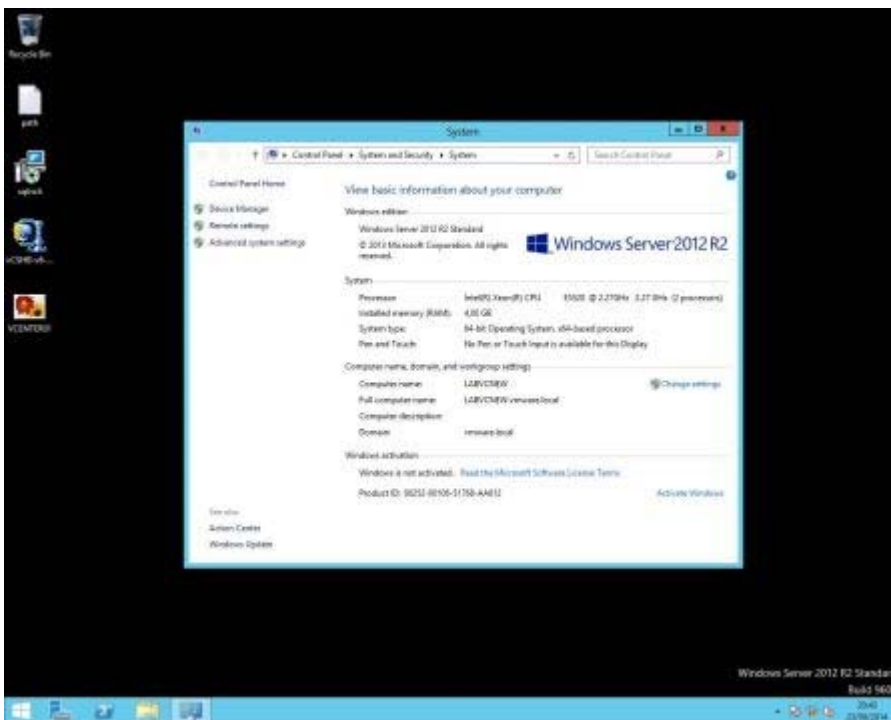
Per tale installazione sarà necessaria la distribuzione delle features di vCenter Server su diverse VMs, soprattutto la parte di vCenter Server e la parte di Database, queste ultime dovranno avere una scheda di erogazione/pubblica e una scheda channel/interna.

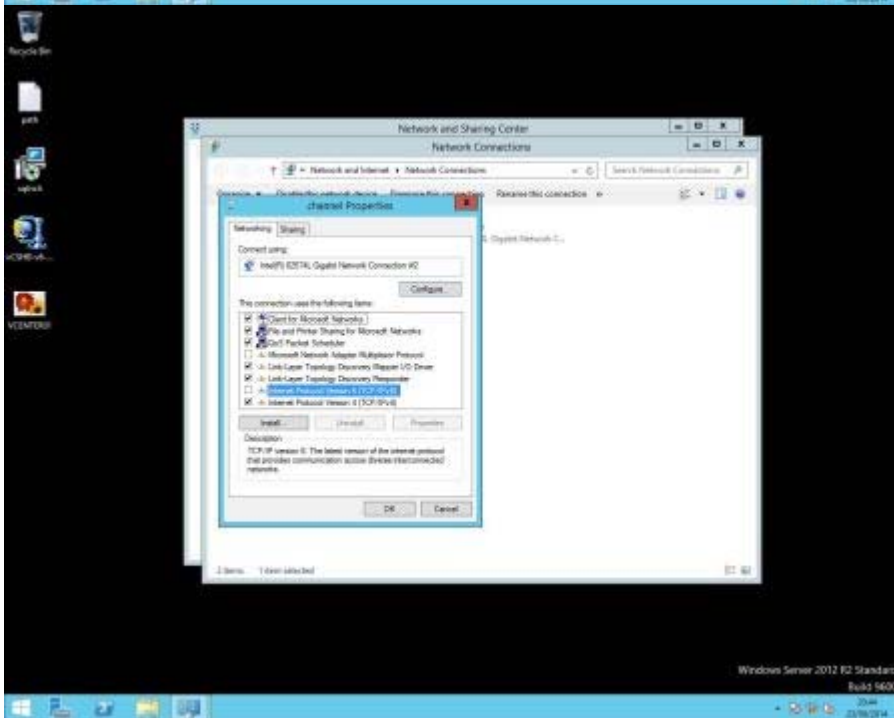
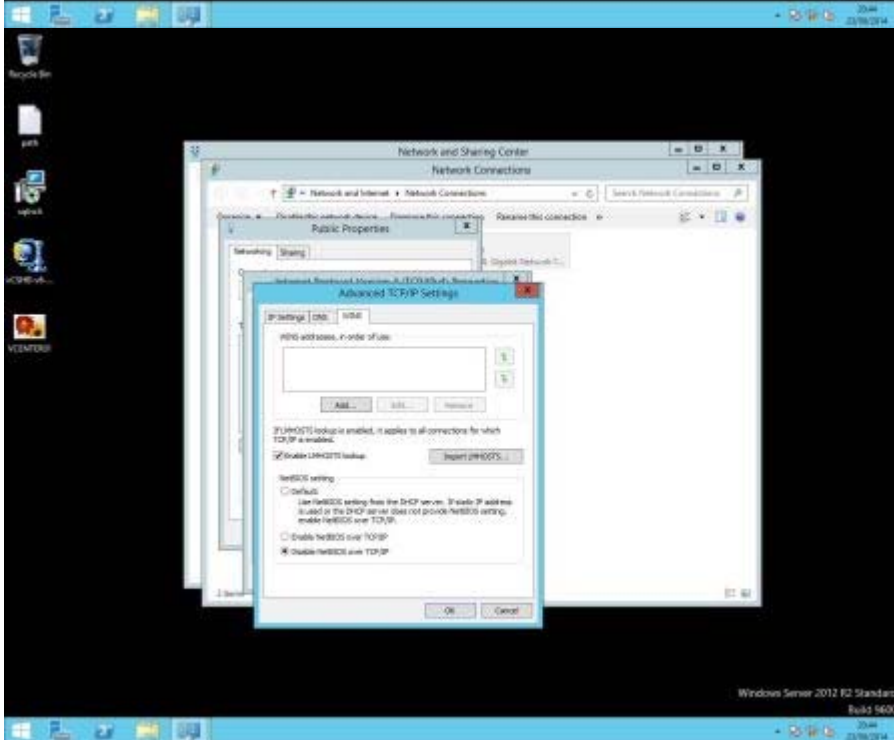
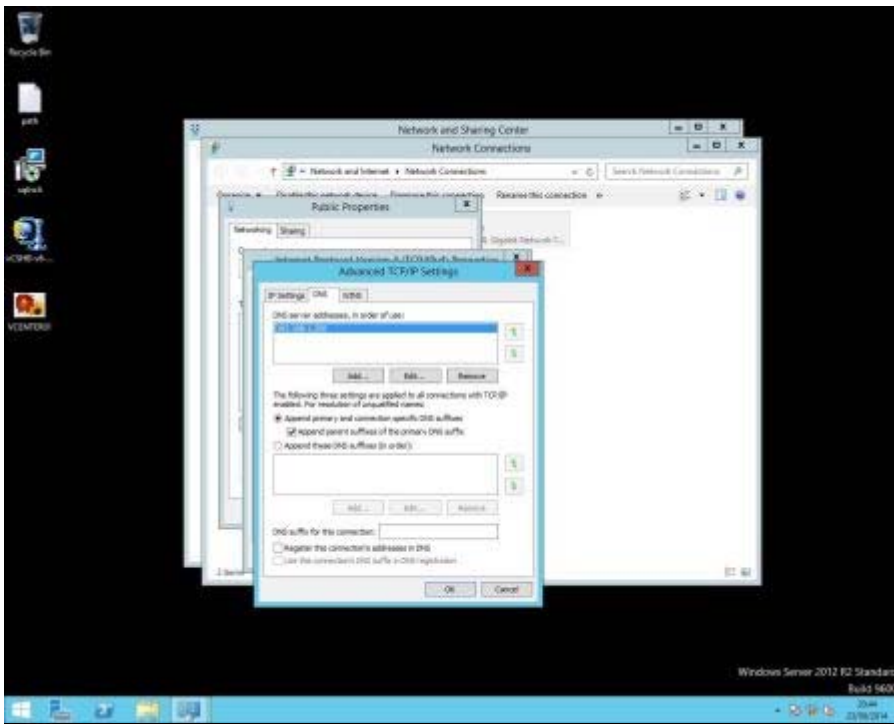
Come vedremo più avanti è possibile installare l'Inventory Service sulla stessa VM di vCenter Server.

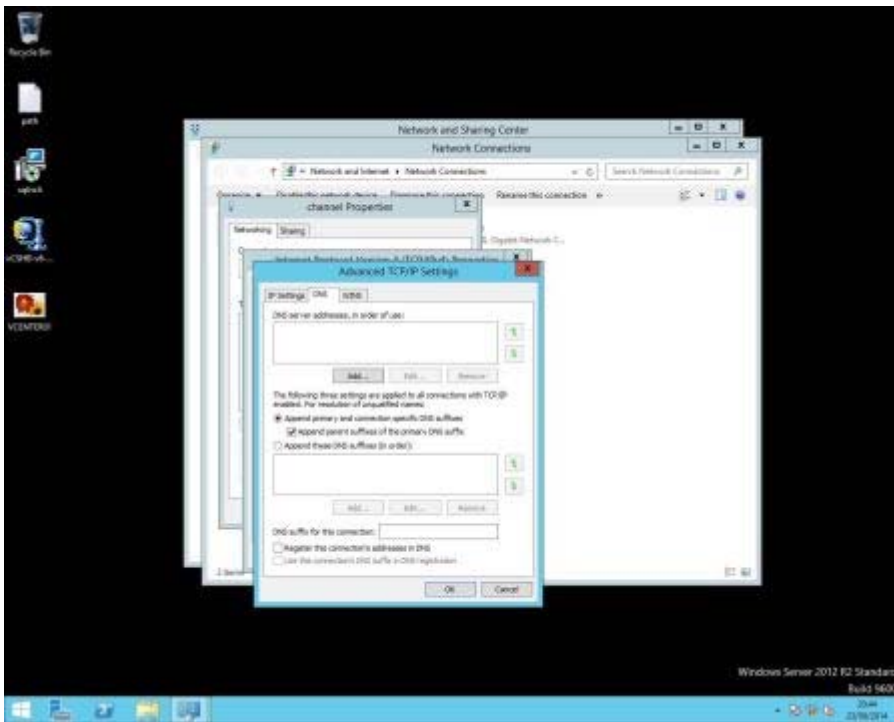
Scegliere la nomenclatura delle VMs; il nostro lab è così implementato:

Dominio	vmware.local
LABDC	192.168.1.250
LABVCNEW Nic Ero	192.168.1.200 (Hostname e IP Vip decisi in fase di progettazione)
LABVCNEW Nic Cha	DHCP

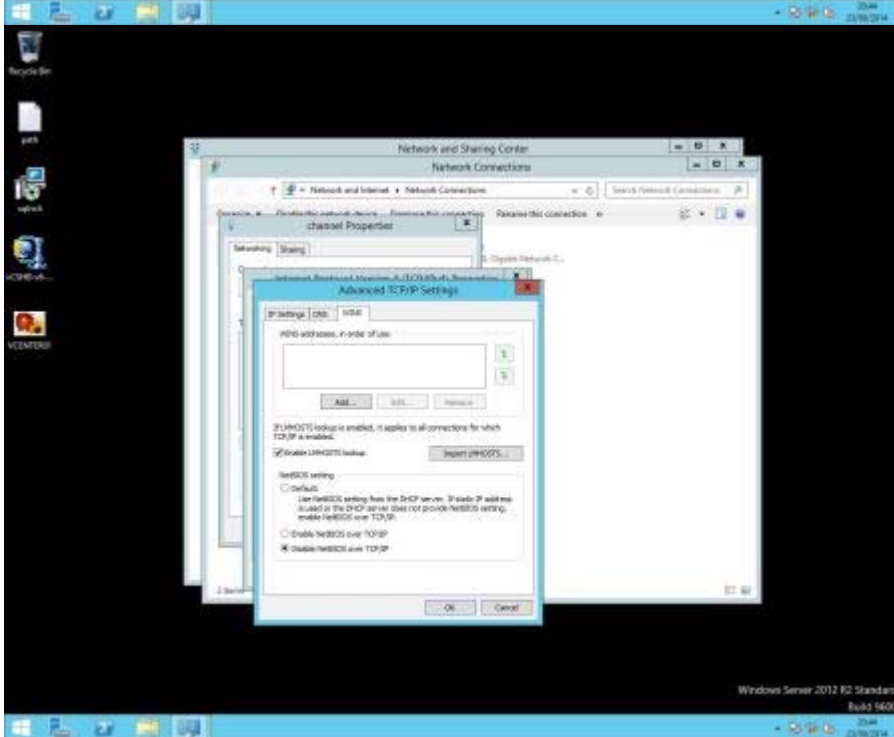
Configuriamo la VM vCenter e la VM Database con l'hostname e l'ip VIP



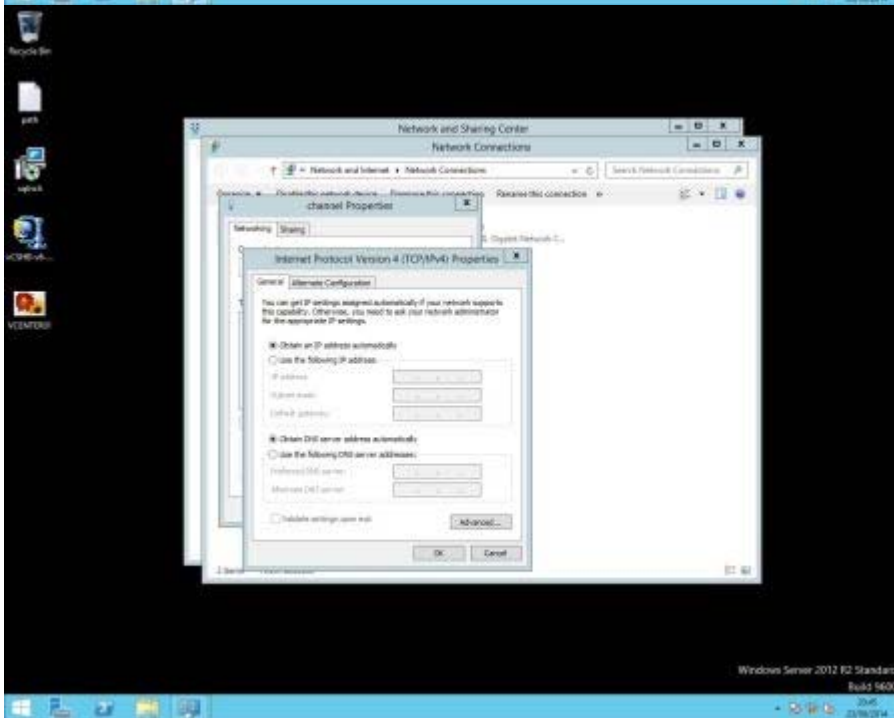




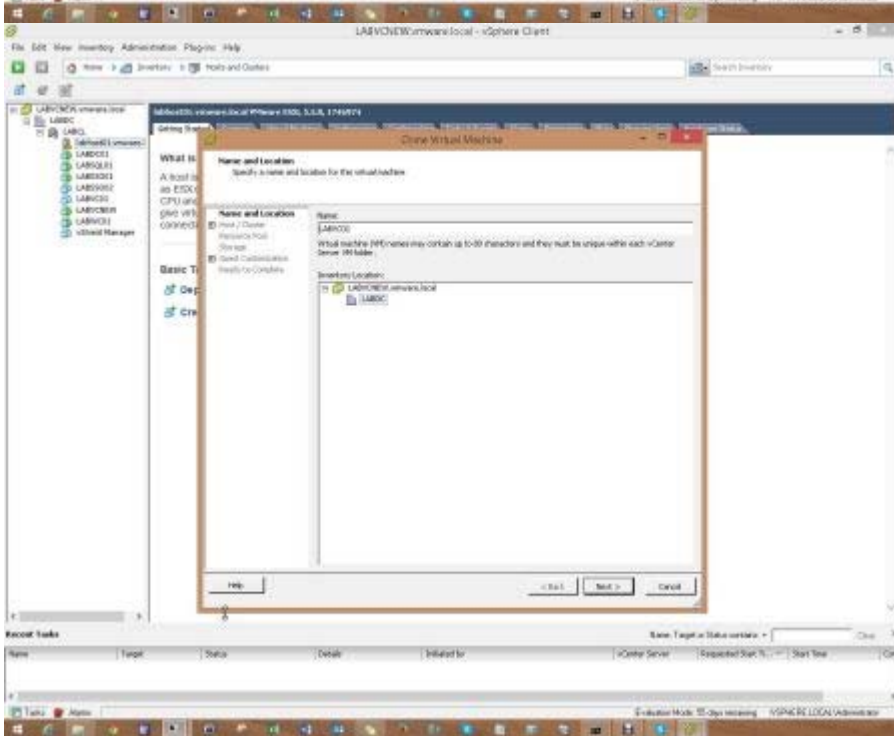
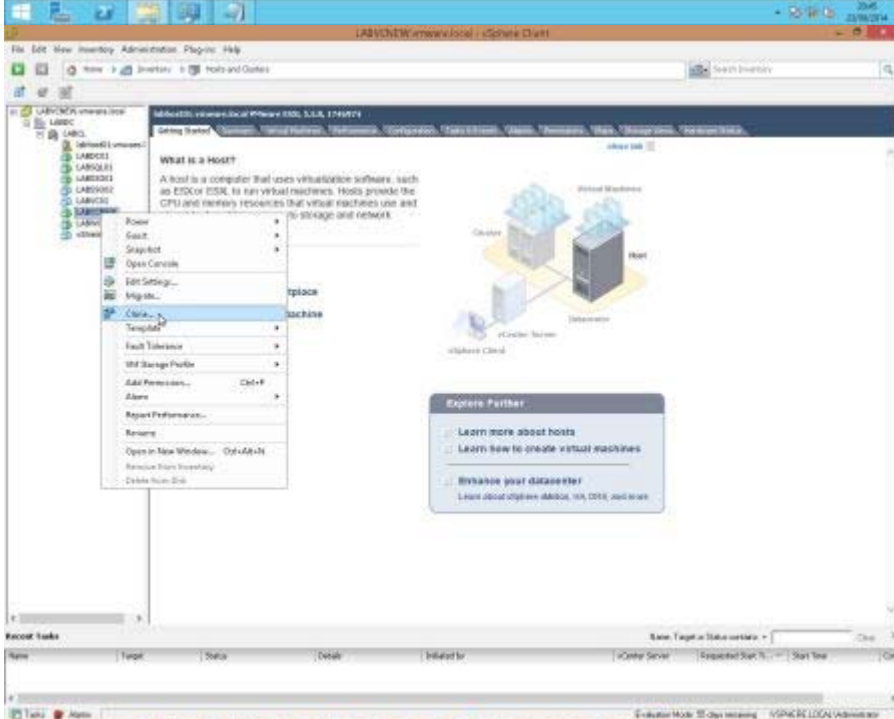
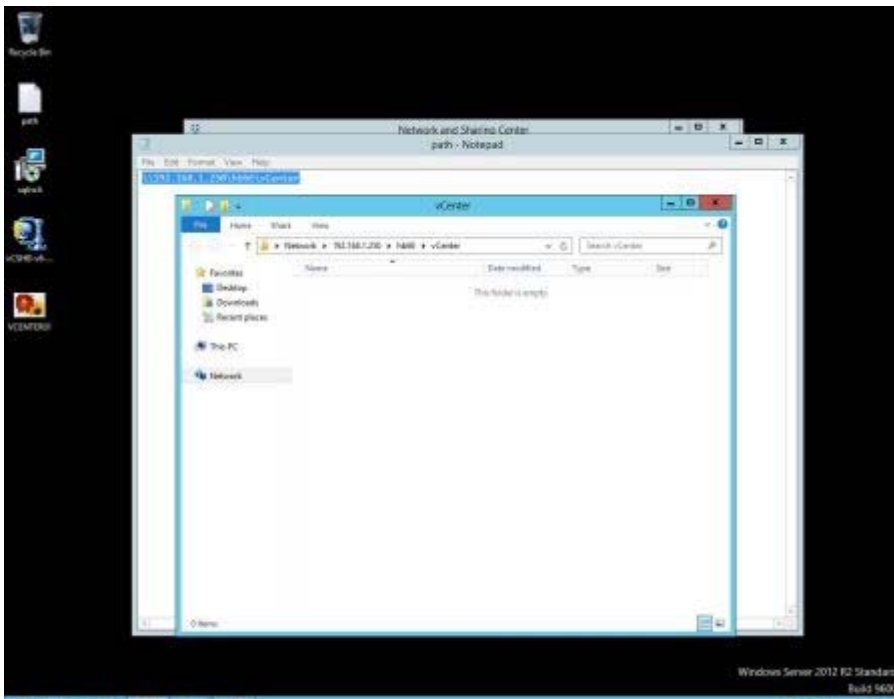
Windows Server 2012 R2 Standard
Build 9600

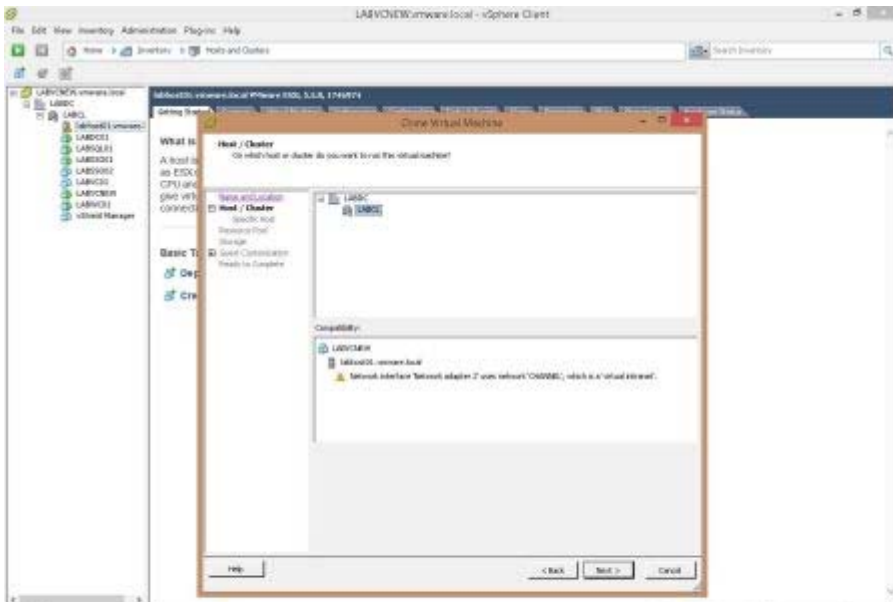


Windows Server 2012 R2 Standard
Build 9600



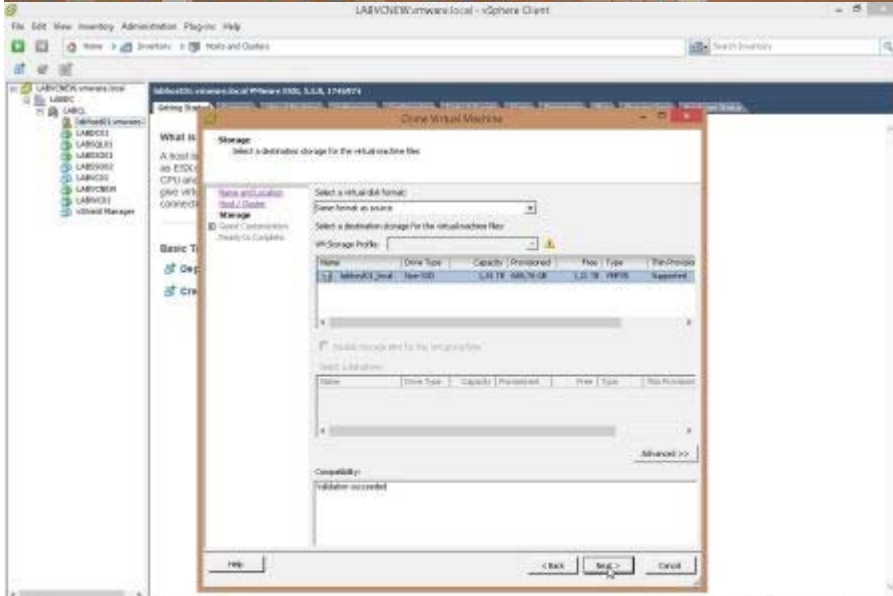
Windows Server 2012 R2 Standard
Build 9600





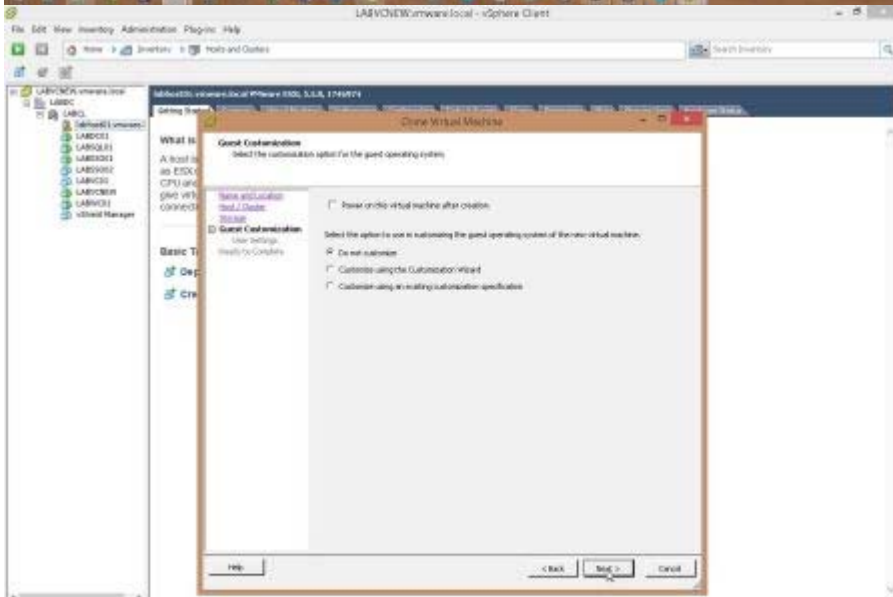
Recent tasks

Name	Target	Status	Details	Initiated by	vCenter Server	Requested Start Time	Start Time
------	--------	--------	---------	--------------	----------------	----------------------	------------



Recent tasks

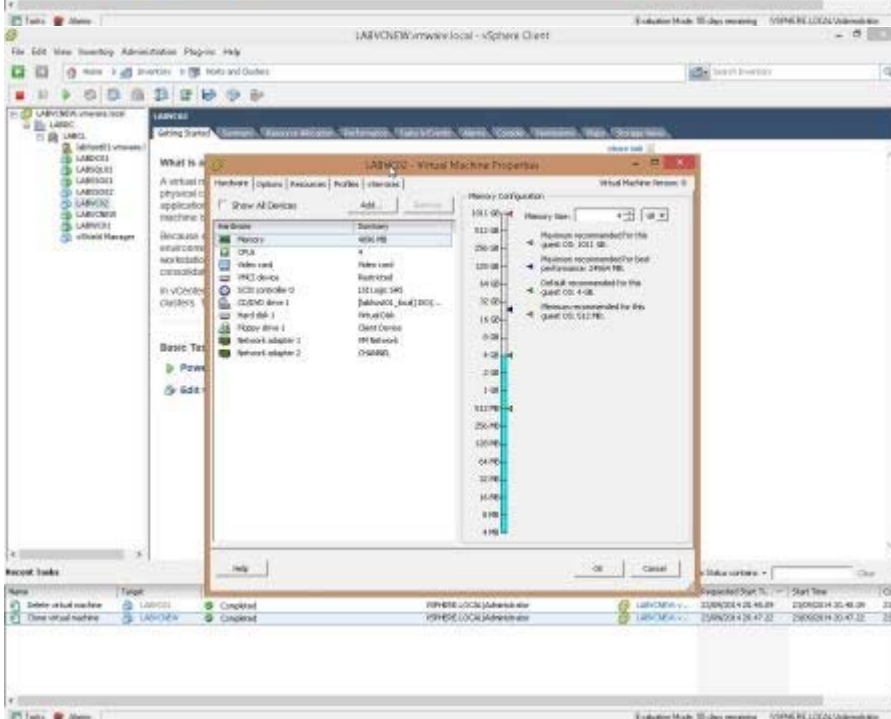
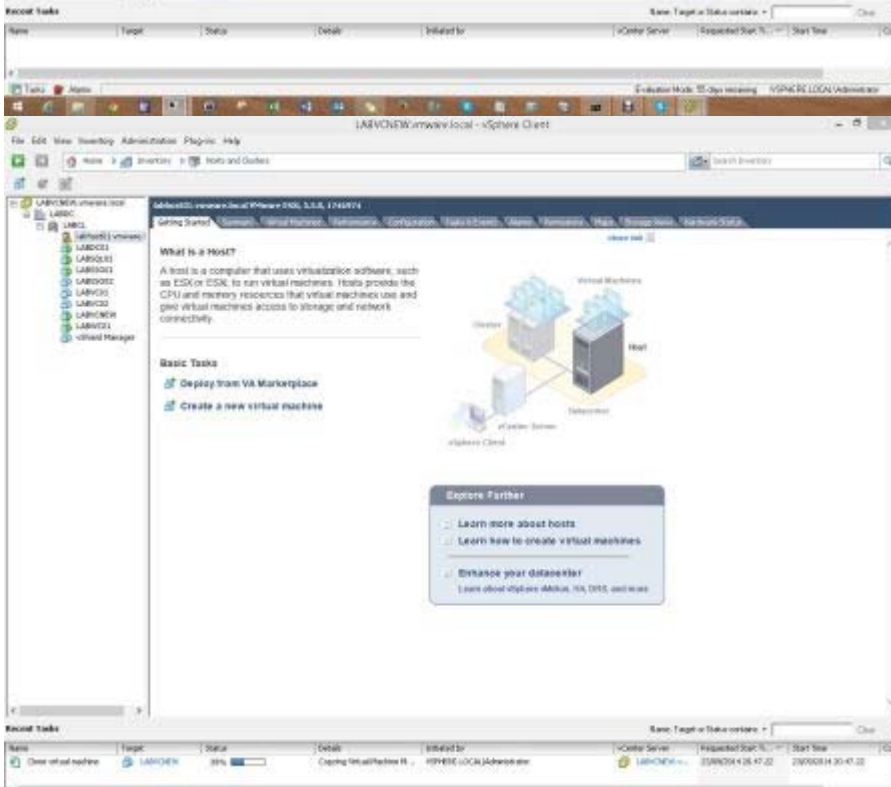
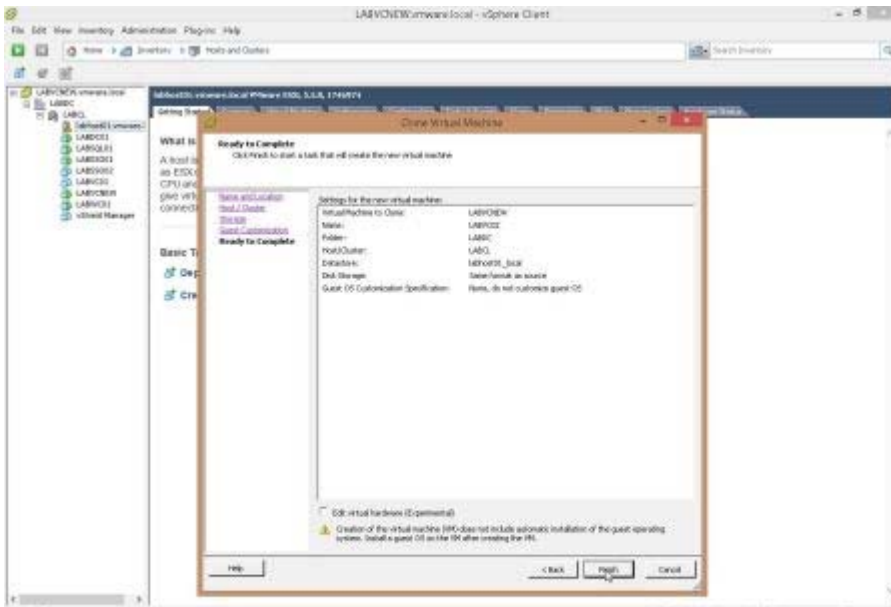
Name	Target	Status	Details	Initiated by	vCenter Server	Requested Start Time	Start Time
------	--------	--------	---------	--------------	----------------	----------------------	------------

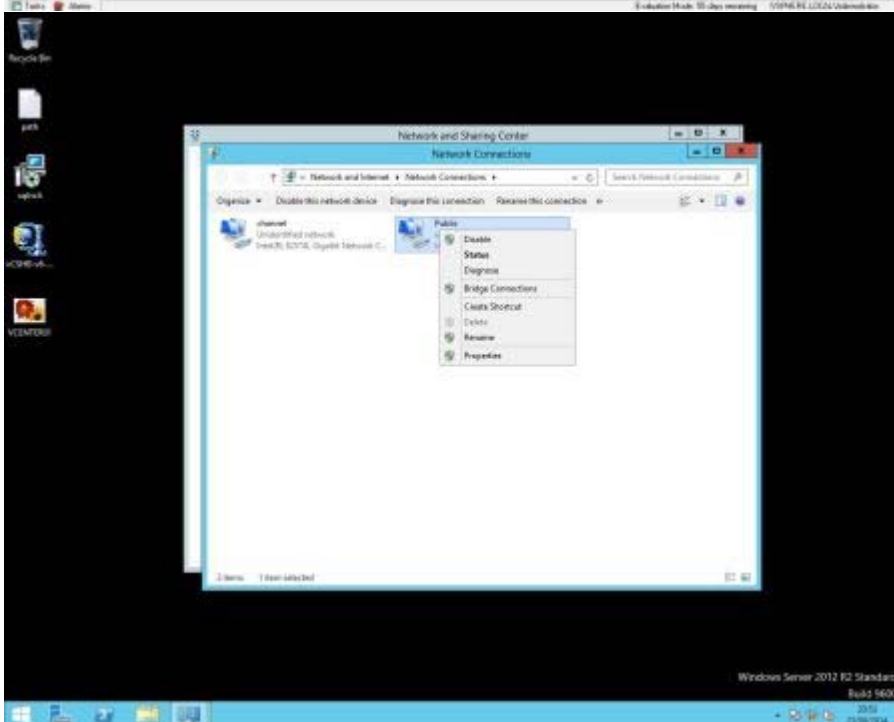
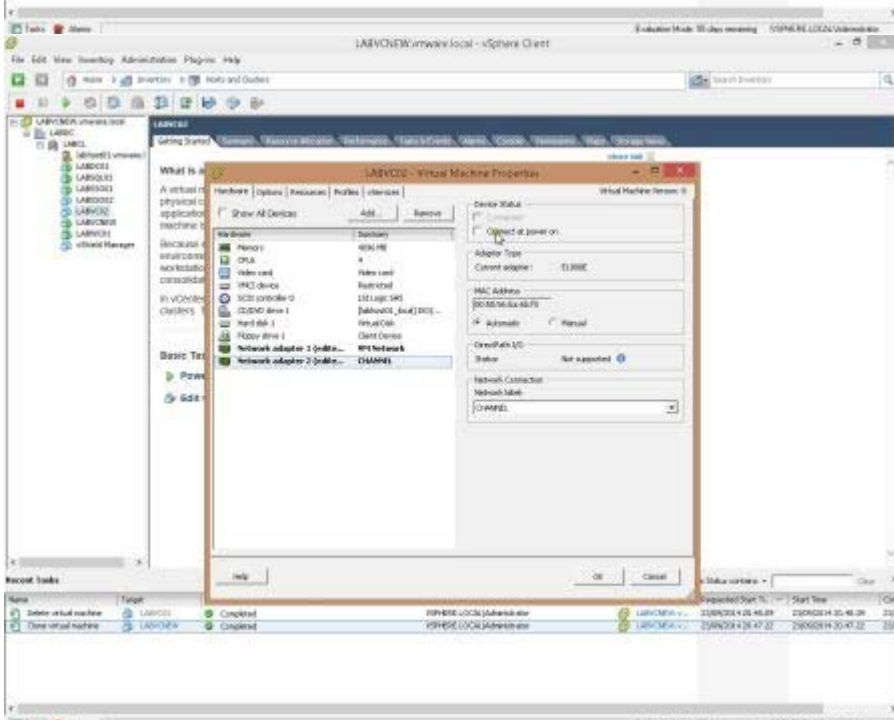
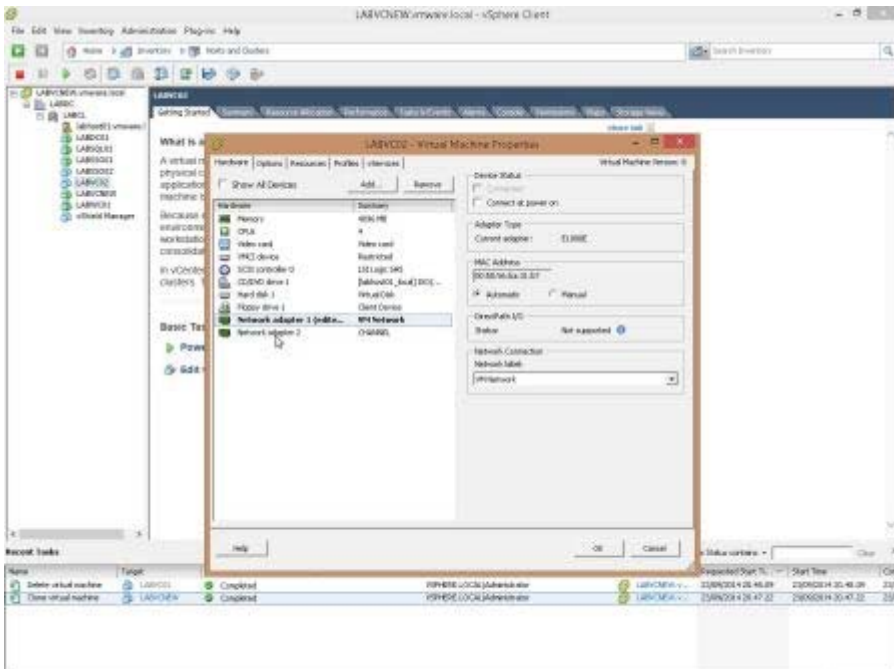


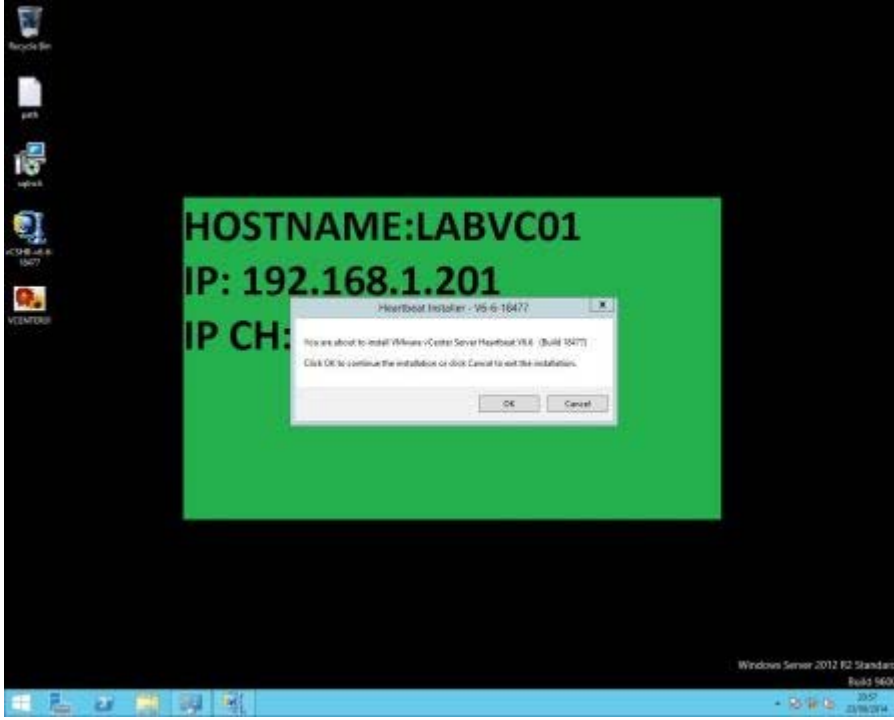
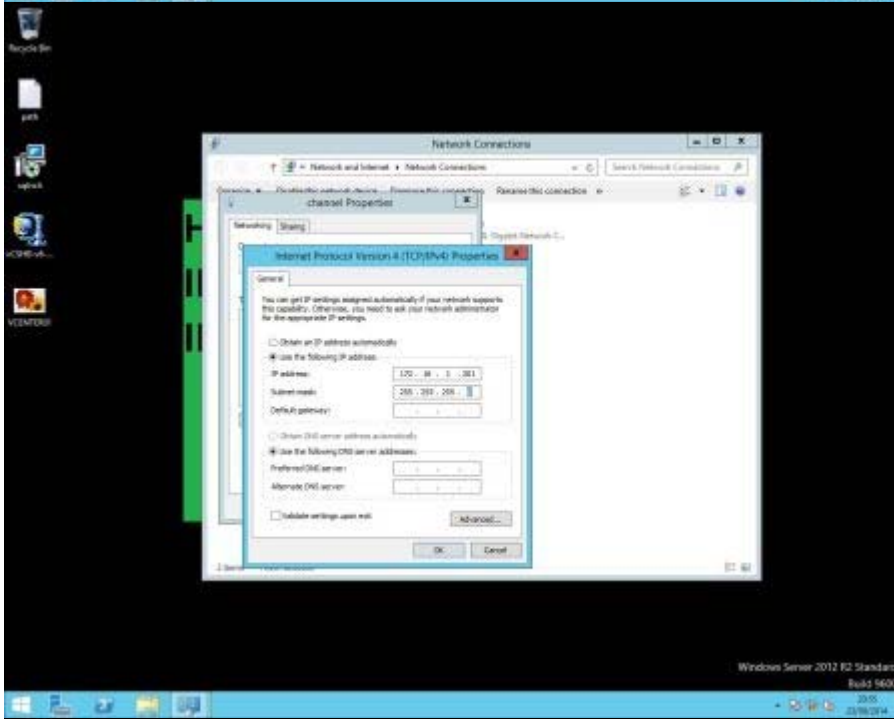
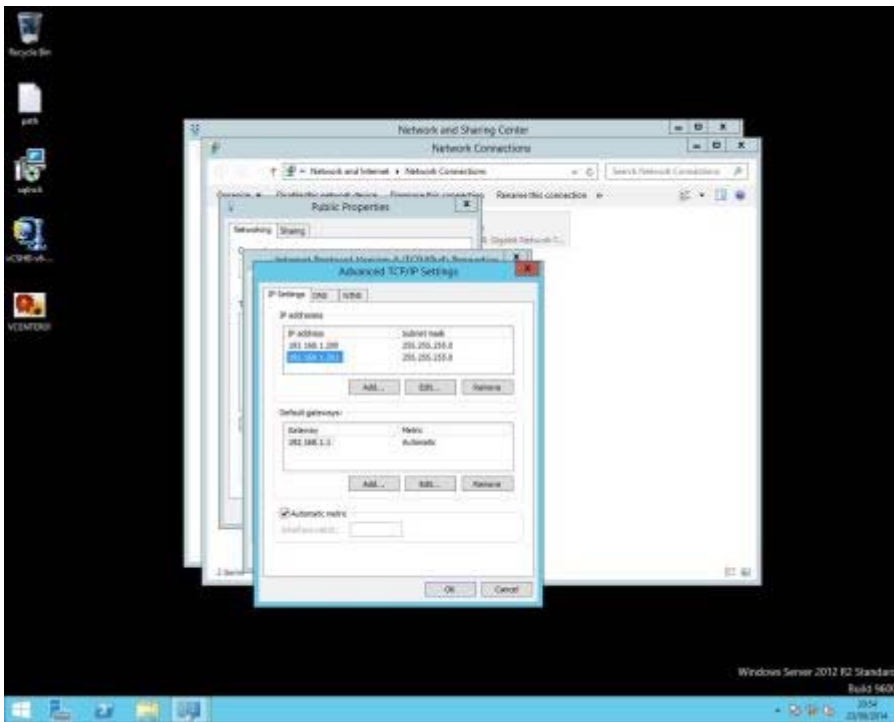
Recent tasks

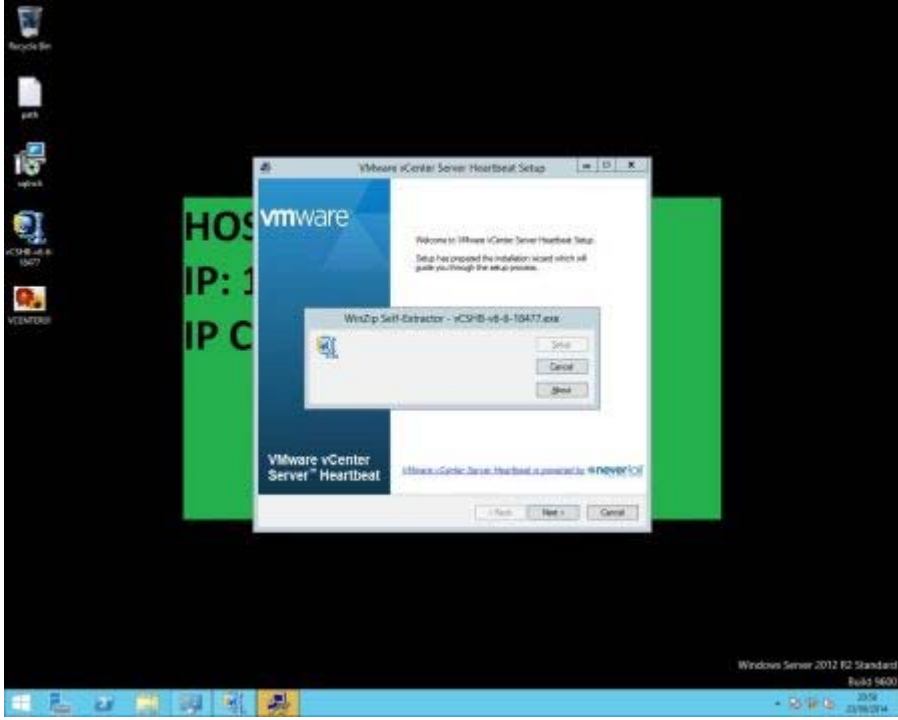
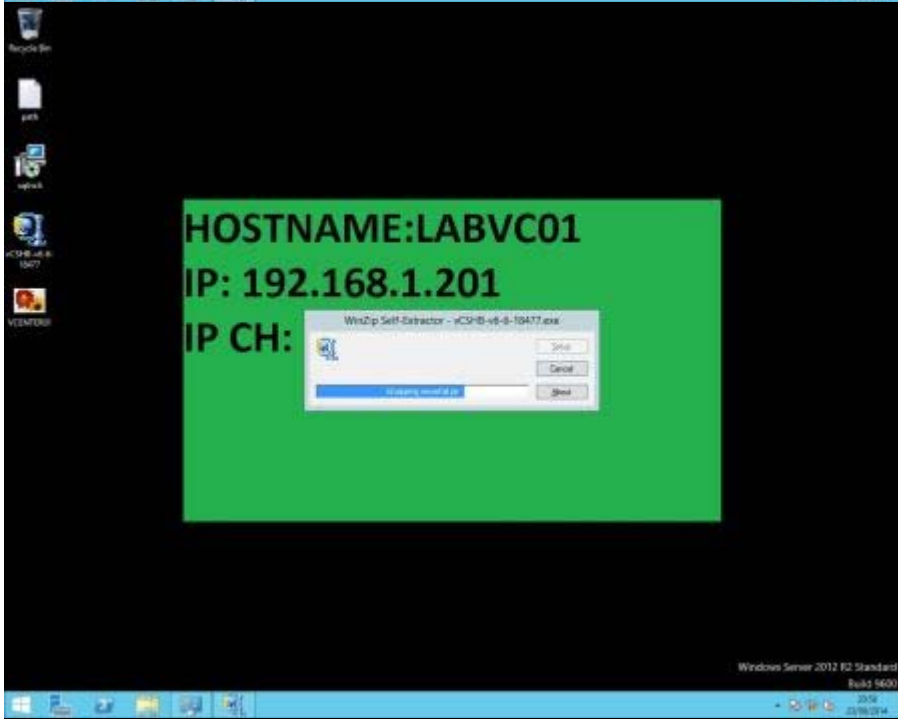
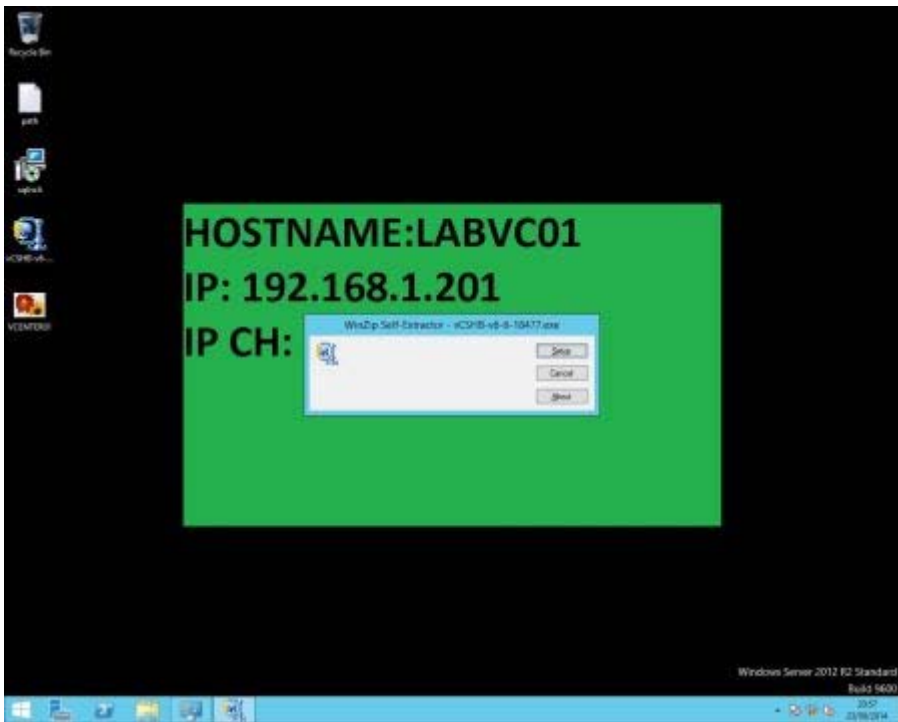
Name	Target	Status	Details	Initiated by	vCenter Server	Requested Start Time	Start Time
------	--------	--------	---------	--------------	----------------	----------------------	------------

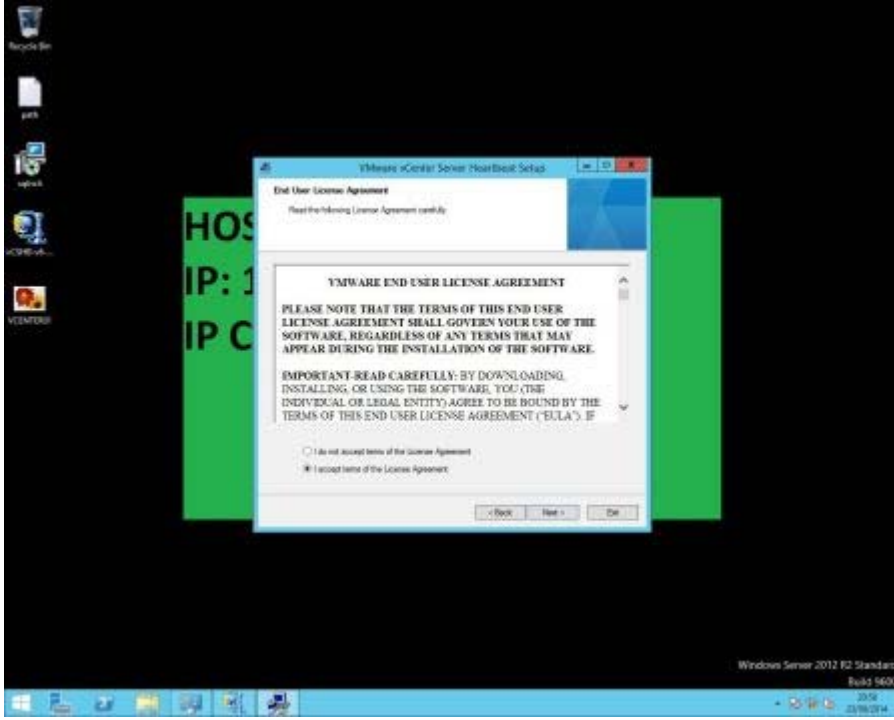
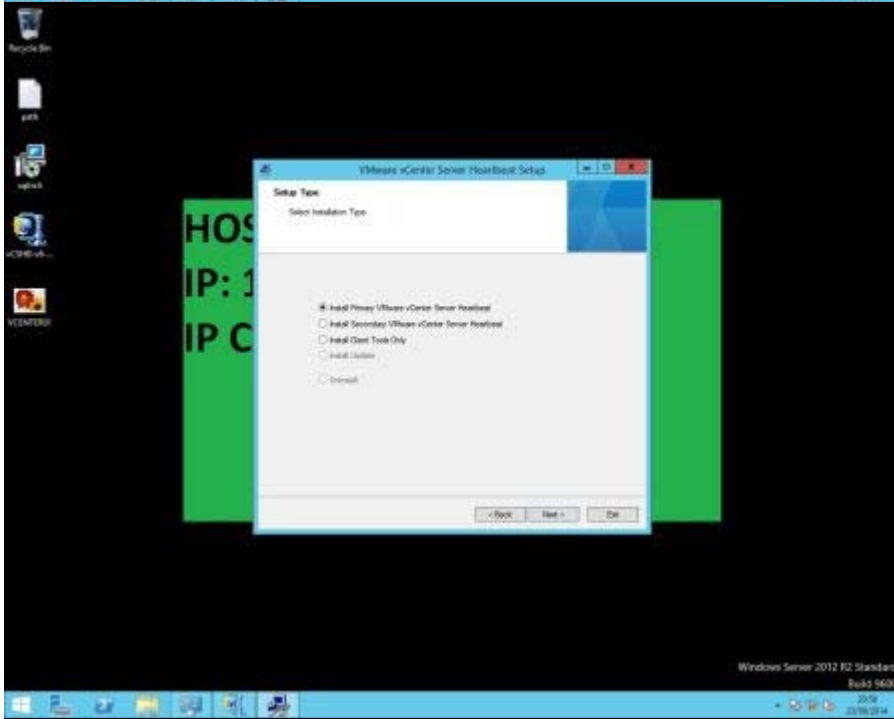
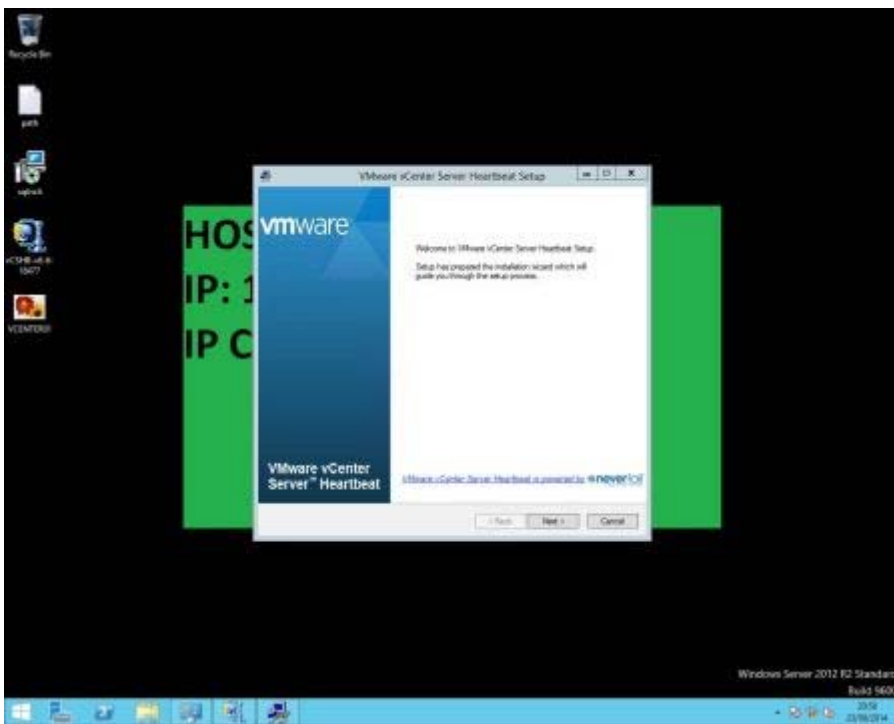


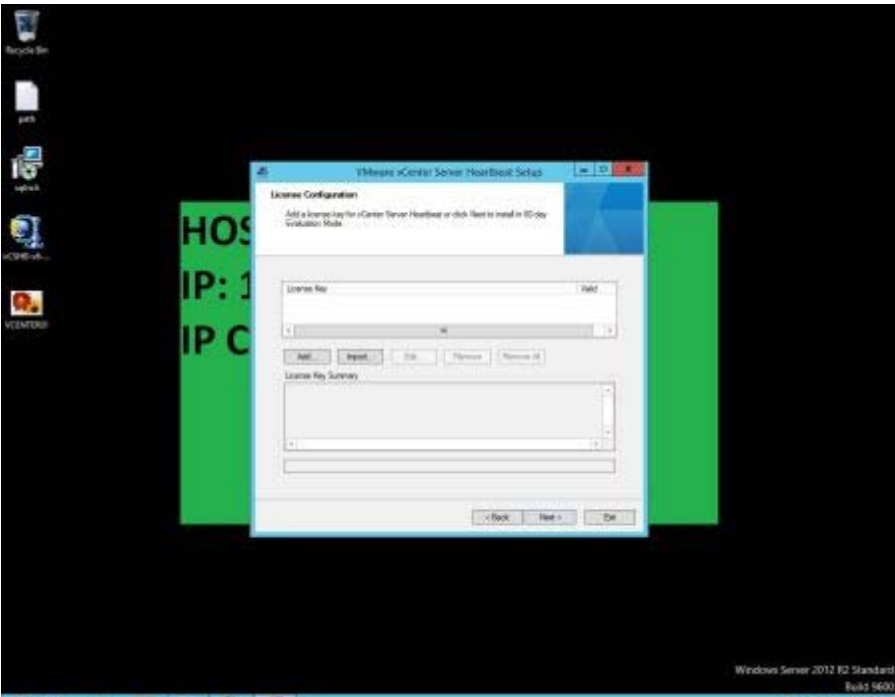




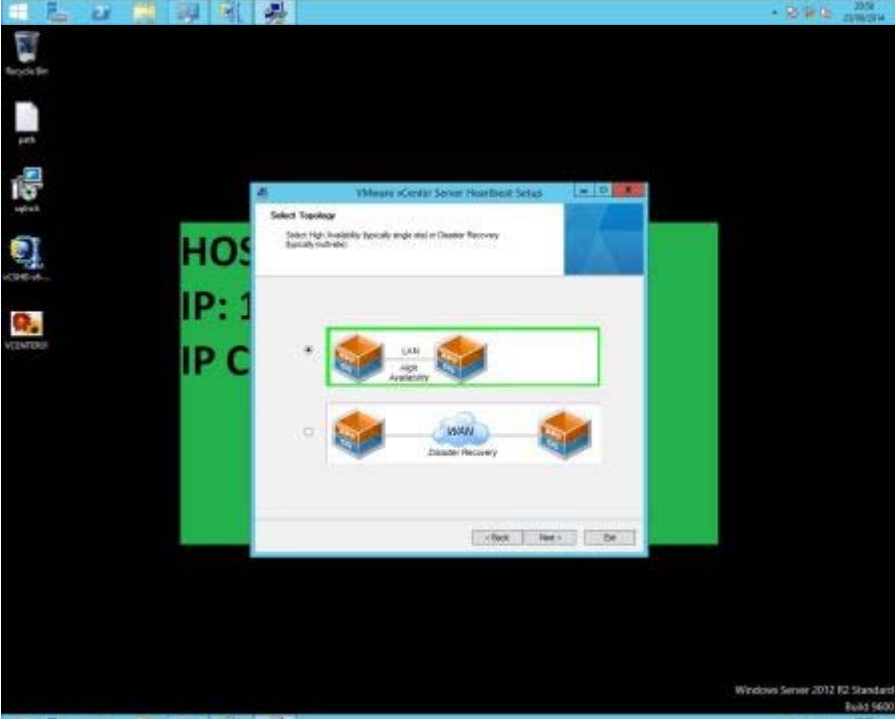




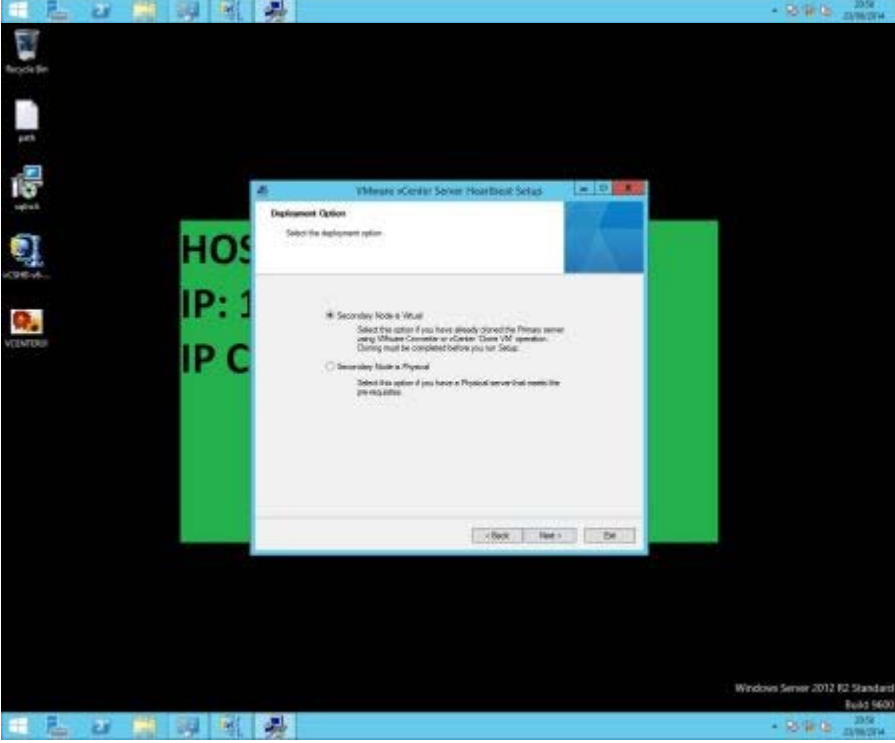




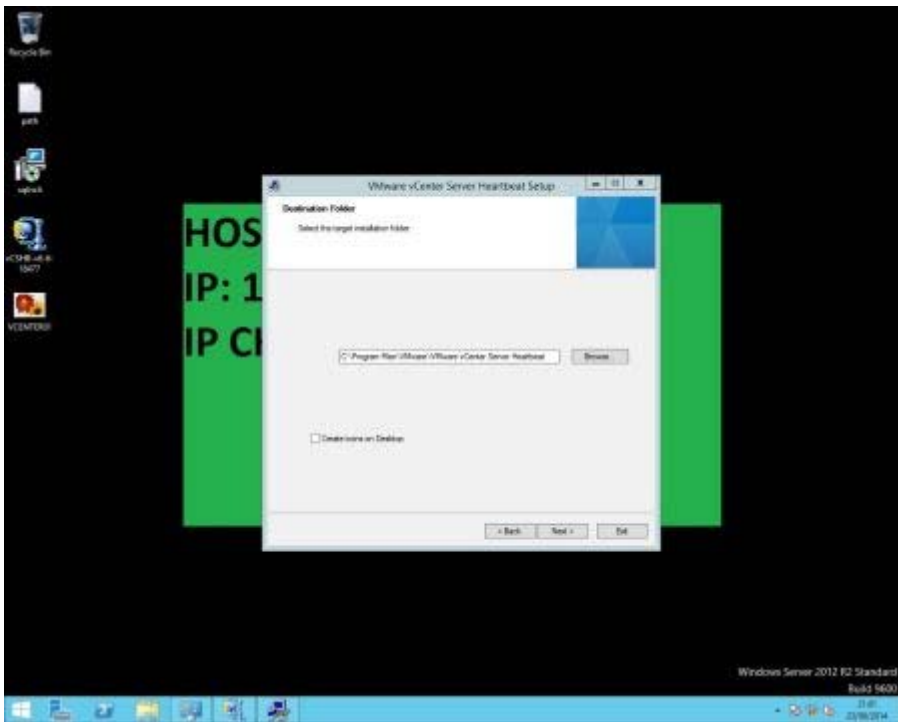
Windows Server 2012 R2 Standard
Build 9600



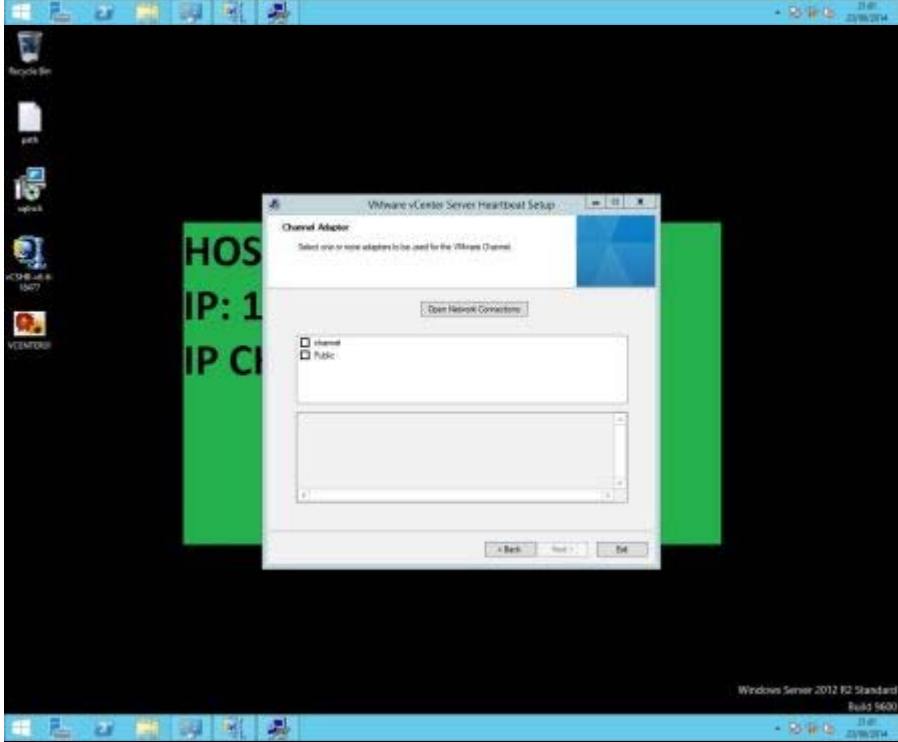
Windows Server 2012 R2 Standard
Build 9600



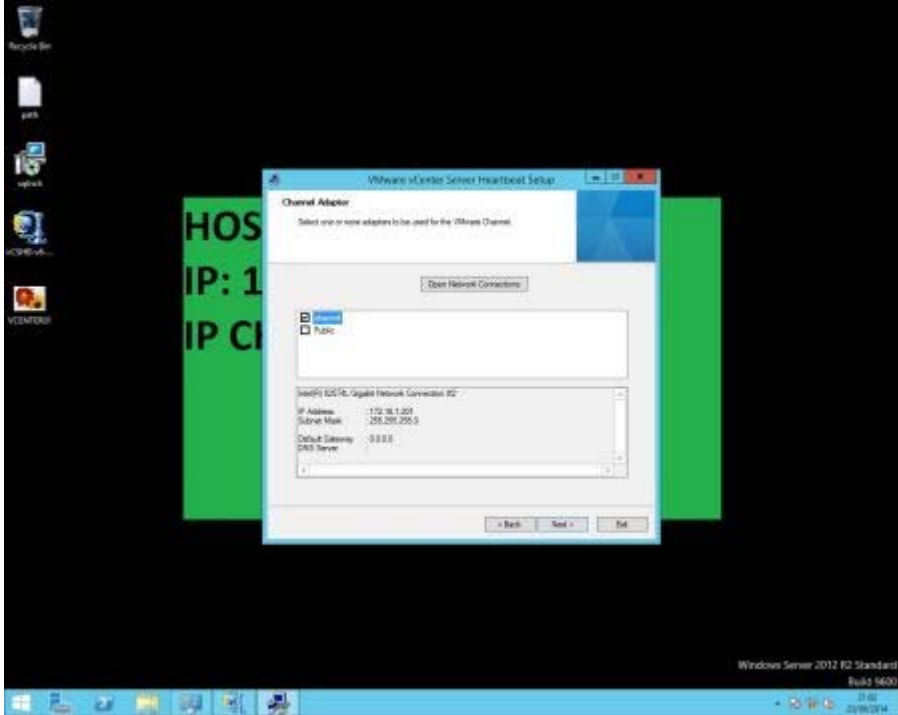
Windows Server 2012 R2 Standard
Build 9600



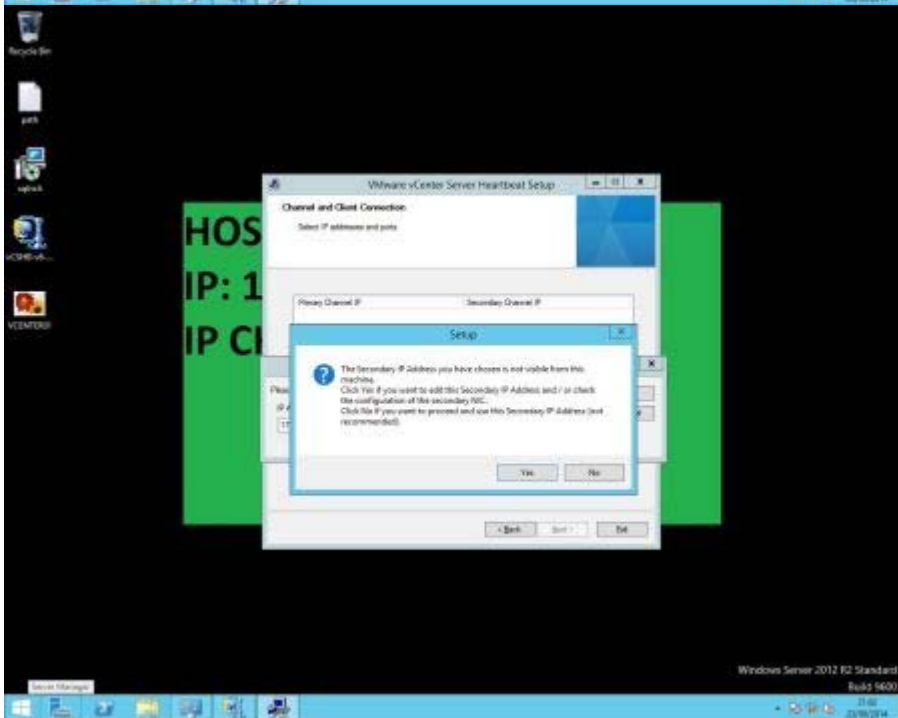
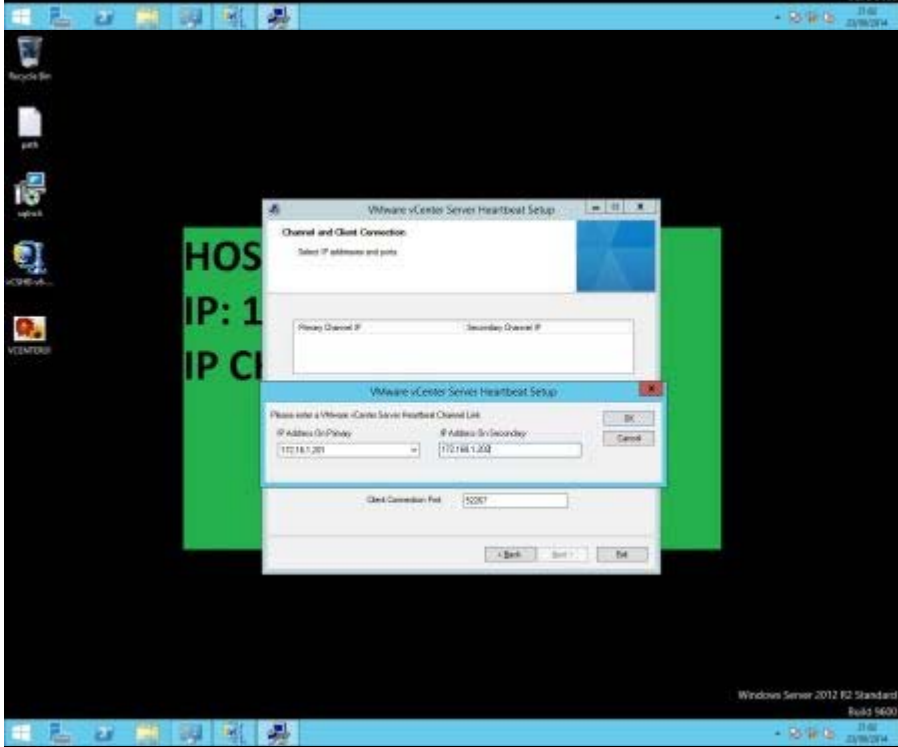
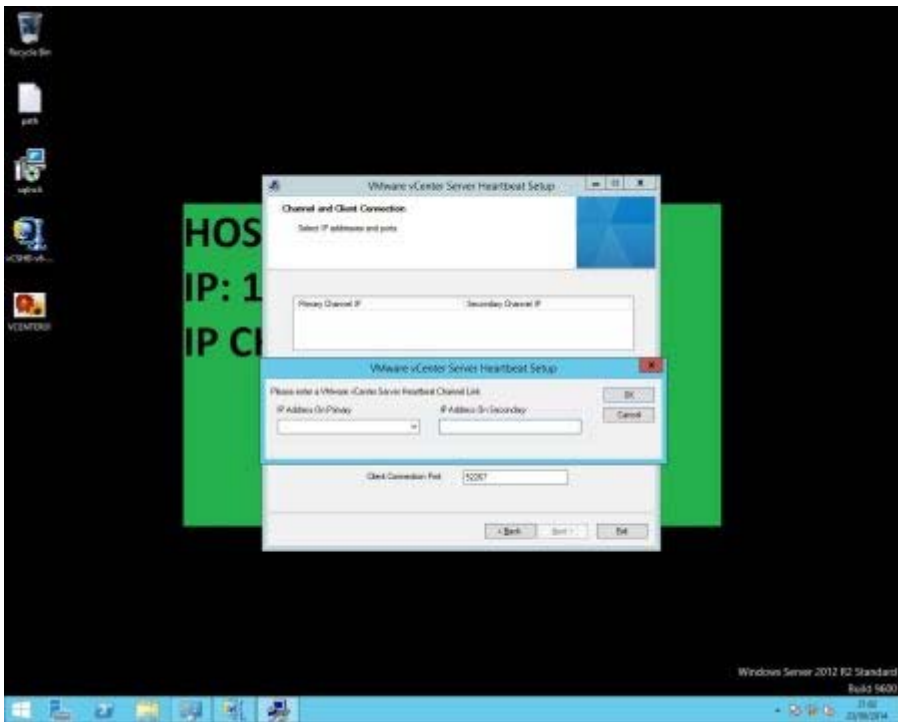
Windows Server 2012 R2 Standard
Build 9600

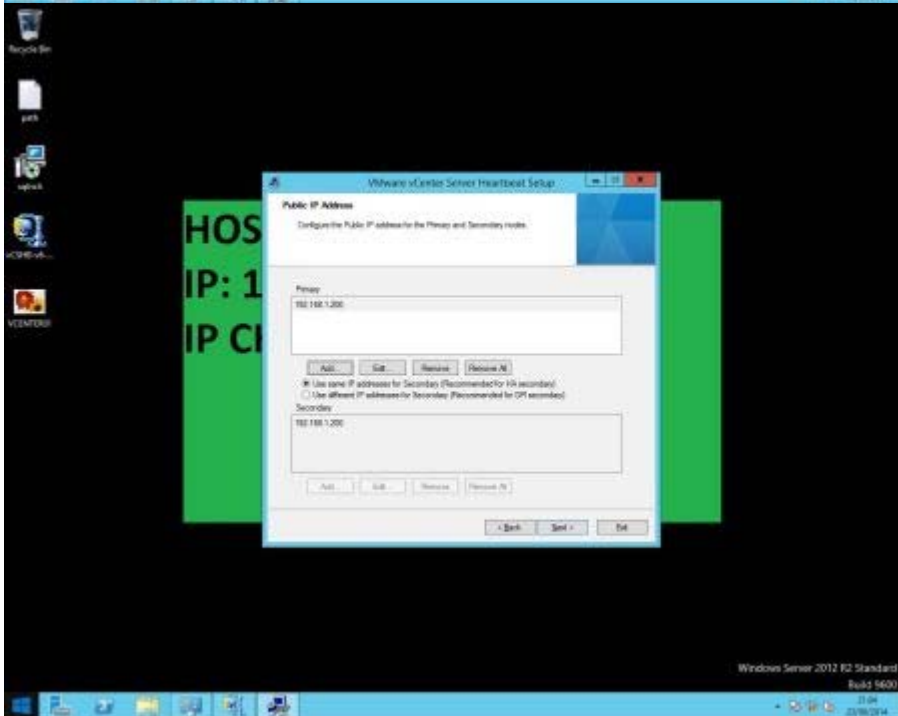
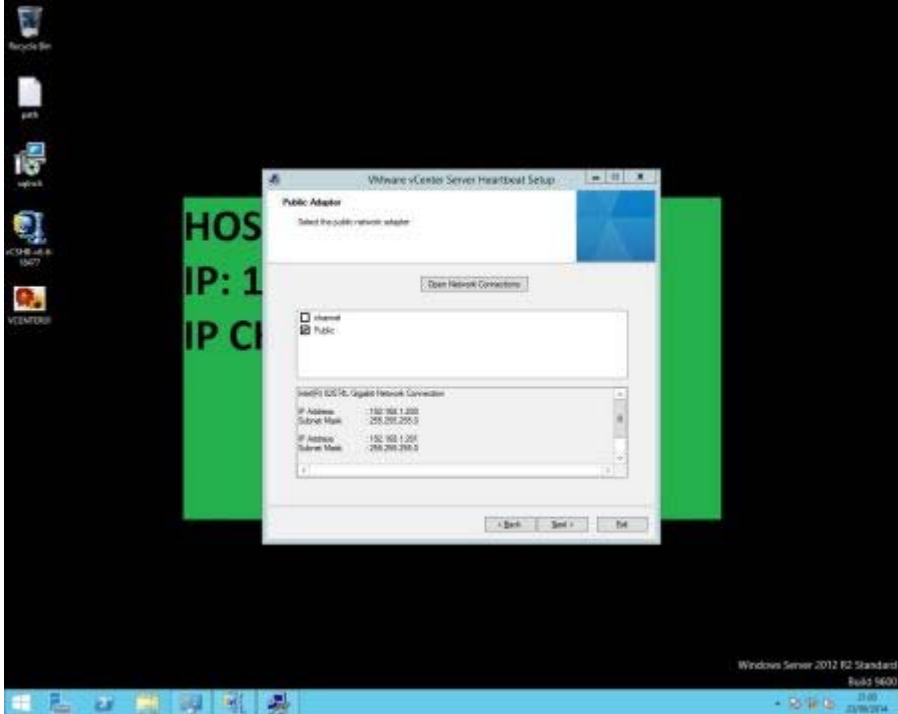
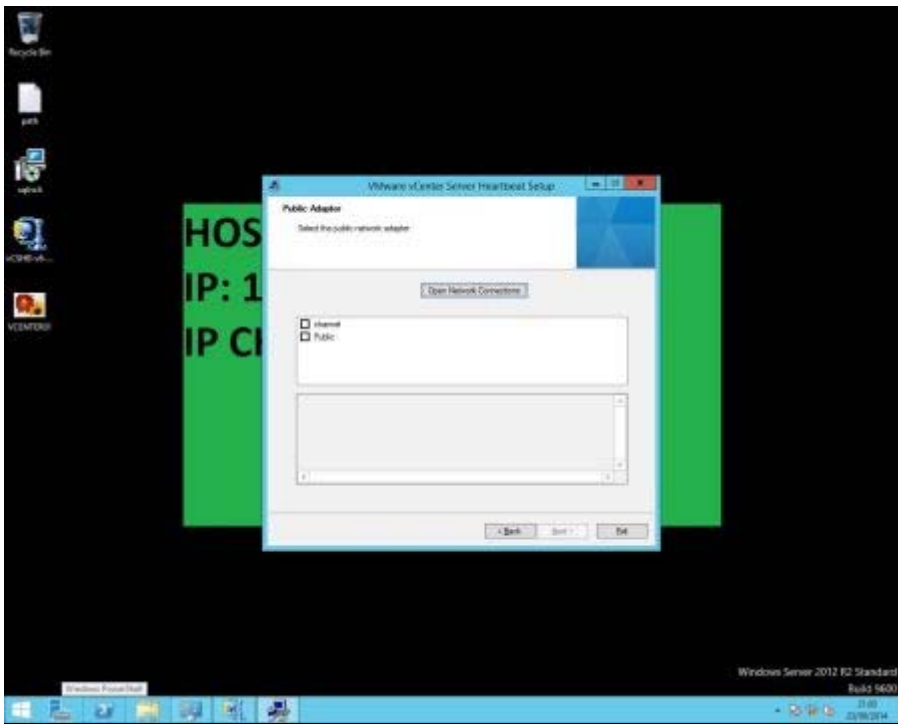


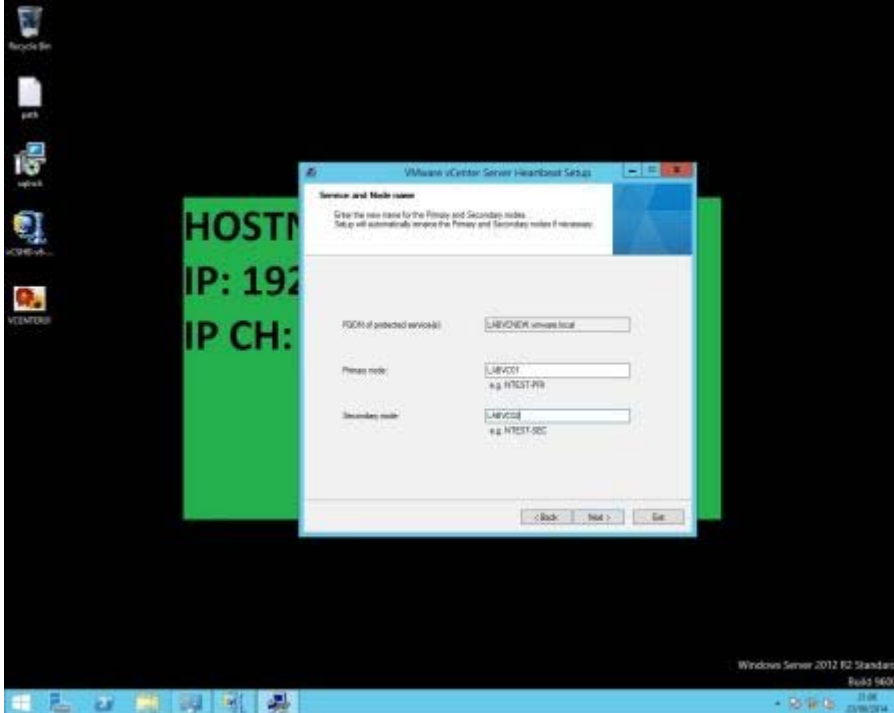
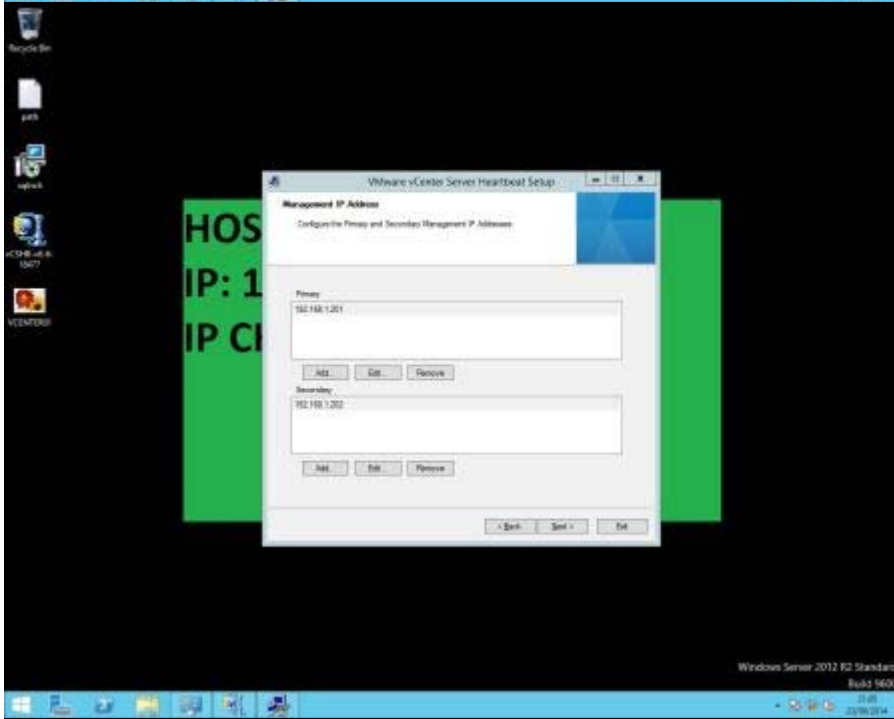
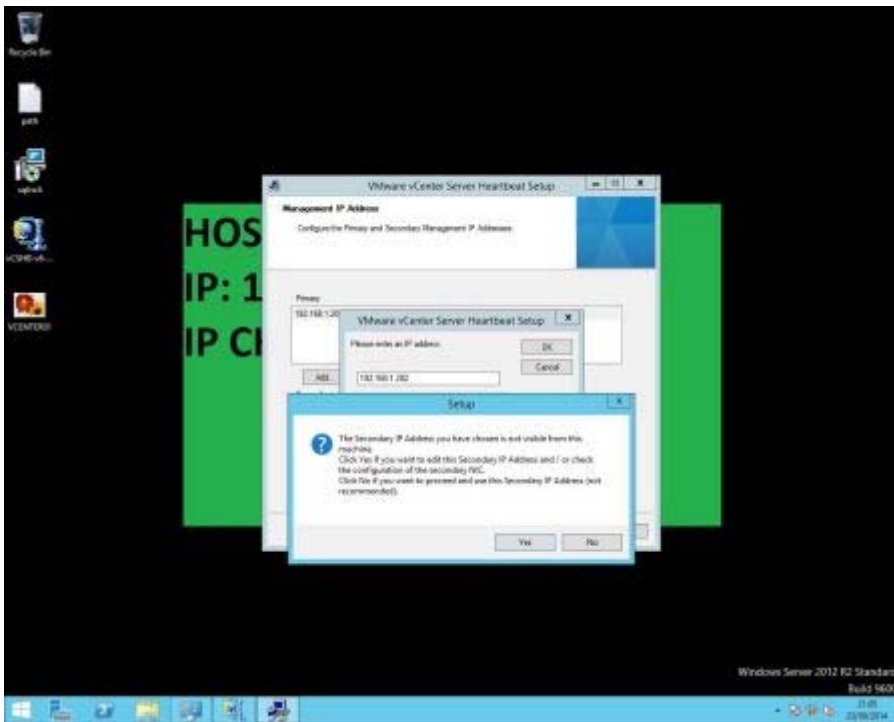
Windows Server 2012 R2 Standard
Build 9600

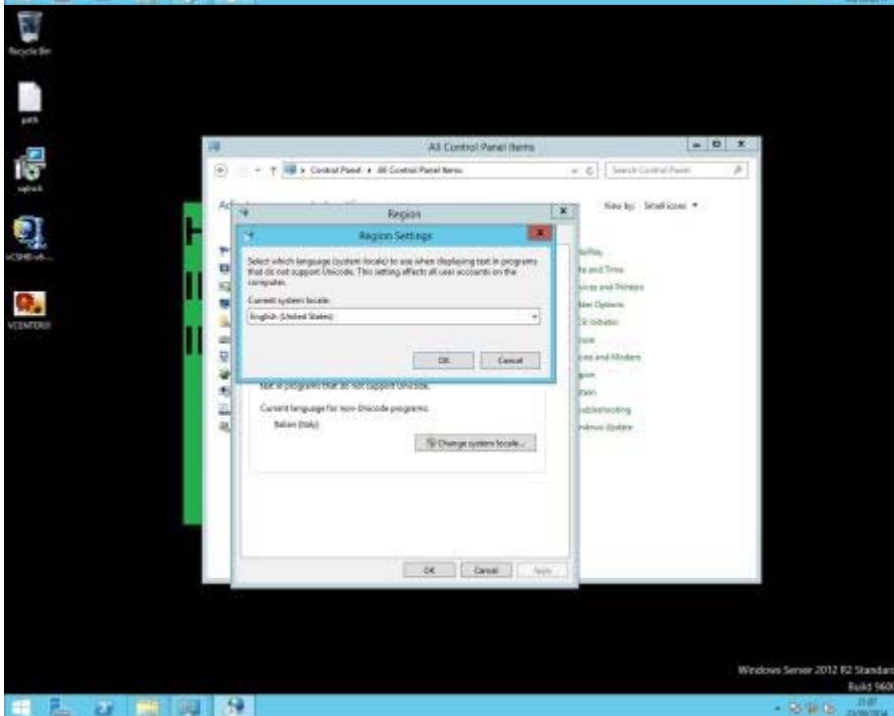
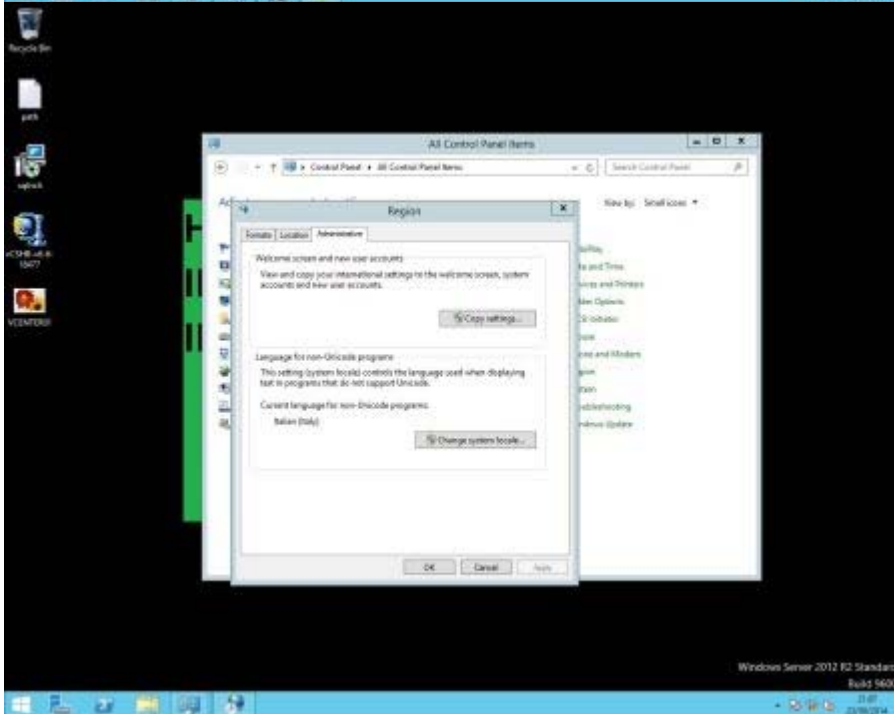
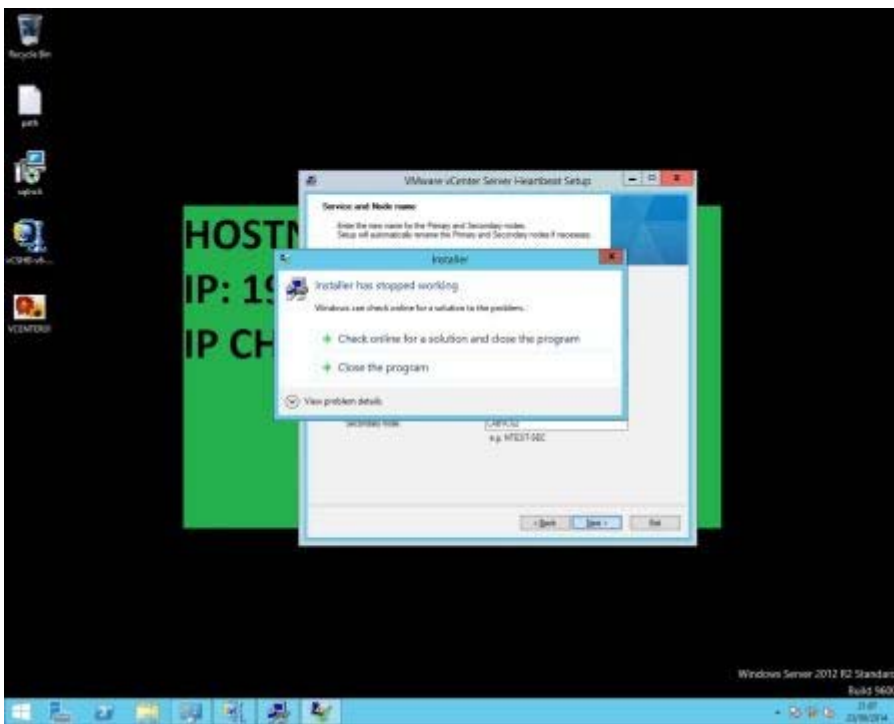


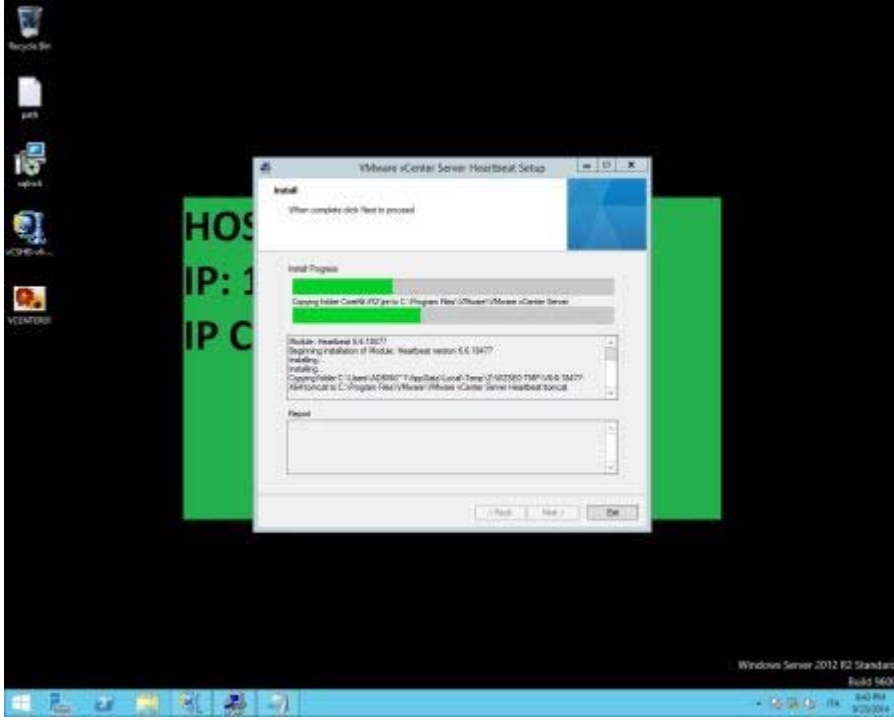
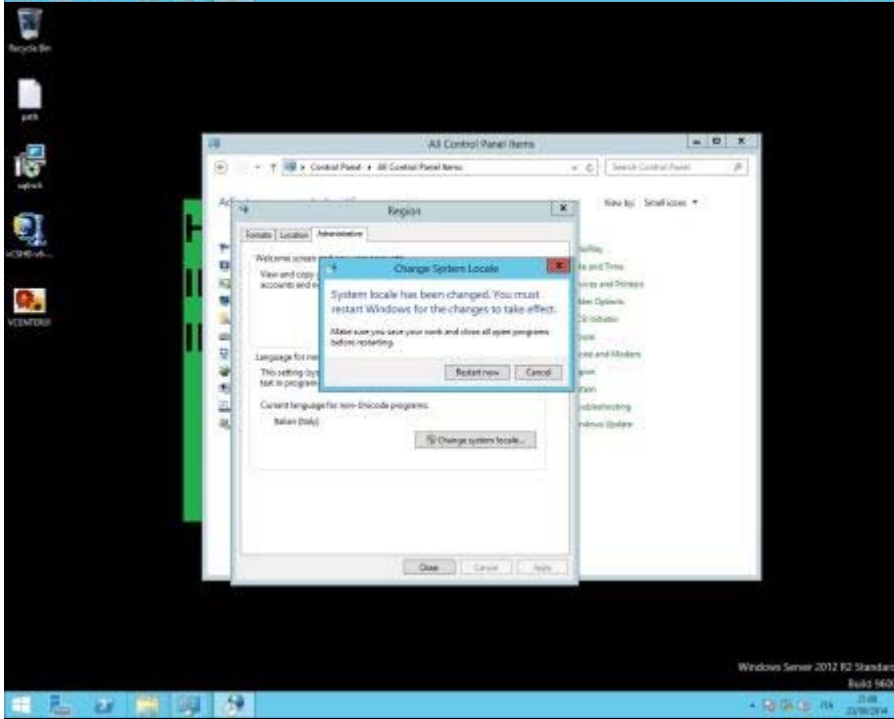
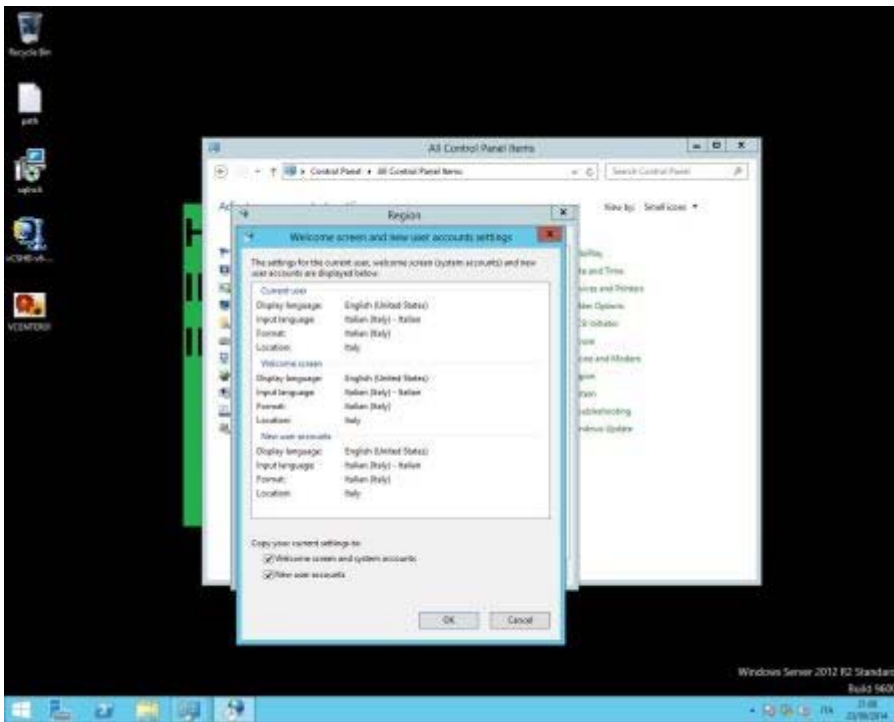
Windows Server 2012 R2 Standard
Build 9600

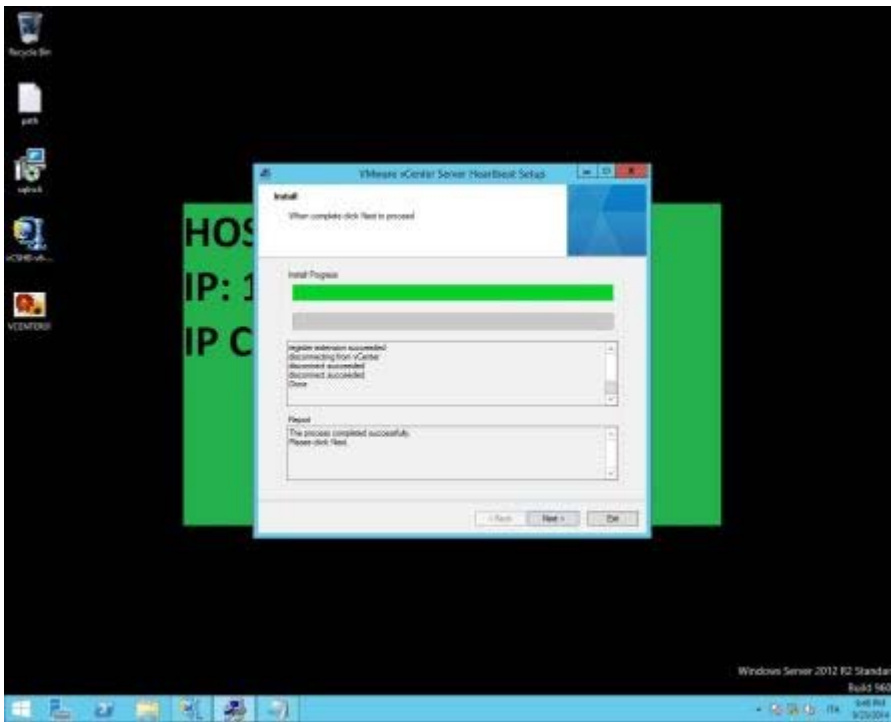












Per l'installazione di SQL procedere nella stessa modalità, in fase di installazione selezione SQL Server e impostare un'utente AD per l'esecuzione del servizio SQL Server.