

**vRealize Automation Installation Wizard** Logout

**Deployment Type** Help

Choose a deployment type for your installation and whether to install the vRealize Automation infrastructure component, IaaS. Each deployment type has different hardware and configuration requirements.

Minimal deployment  
 Enterprise deployment

Minimal deployments are typically used in a development environment or as a proof of concept.

For minimal deployments, you must deploy one vRealize Appliance. You can install all infrastructure components on a single Windows machine.

**Install Infrastructure as a Service**

Infrastructure as a Service (IaaS) allows you to rapidly model and provision servers and desktops across private or public, virtual, or hybrid cloud infrastructure.

[More information about IaaS Installation.](#)

You can click to have the diagram open in a separate window.

Next Cancel

**VMware vRealize Automation Management Agent Set...**

**Management Site Service**

Specify the VA host for the Management Site Service to use for the agent.

vRA appliance address:  
  
 Specify the scheme and the port (hosted by default on 5480). Example: https://va-address:5480

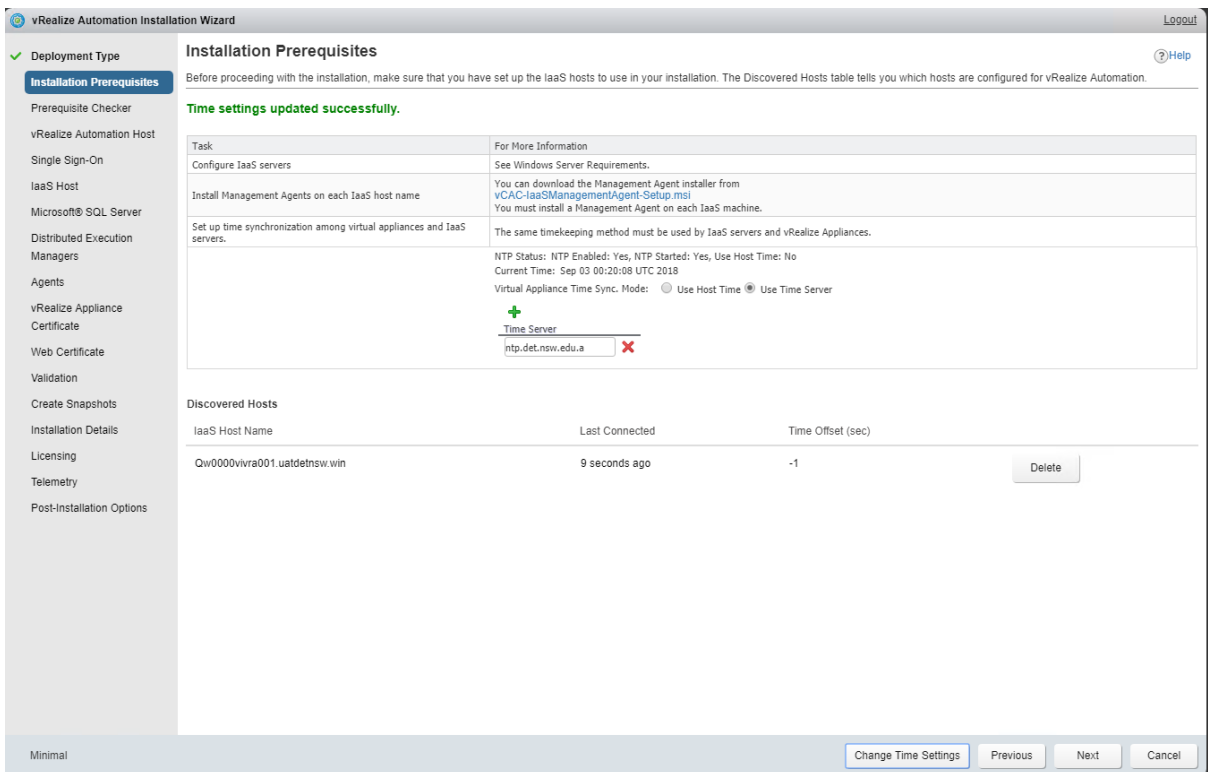
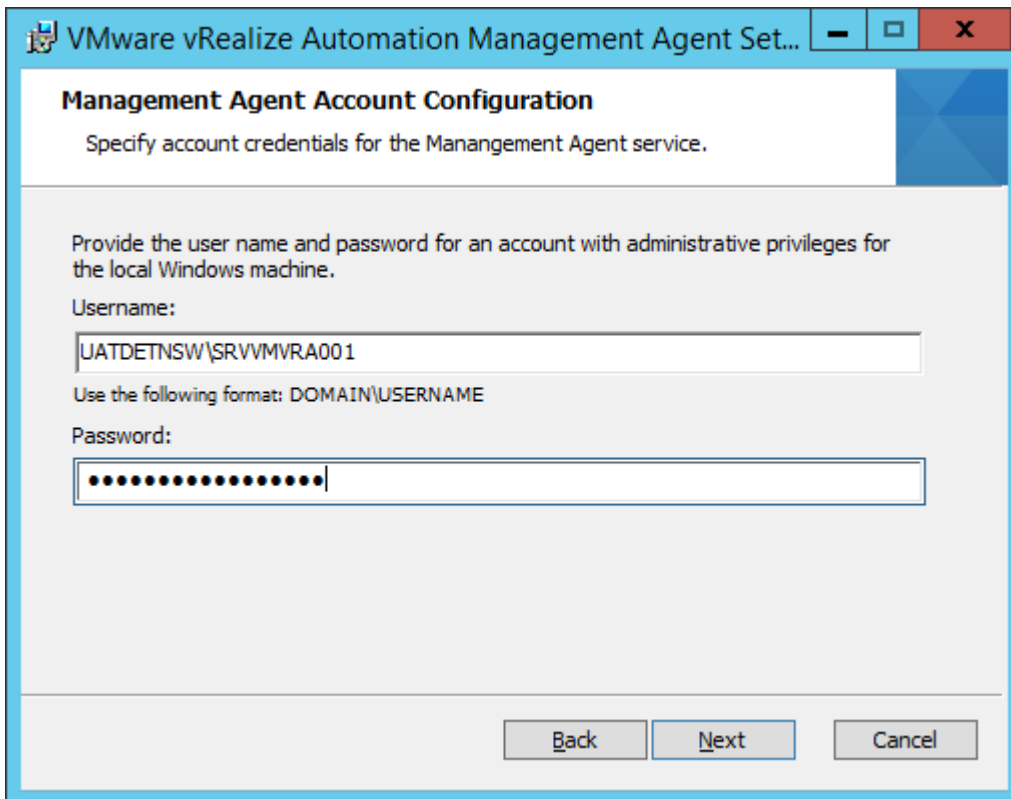
Root username:  Password:

Provide vRealize Automation appliance root user credentials

Management Site Service certificate SHA1 fingerprint:

I confirm the fingerprint matches the Management Site Service SSL certificate.

Back Next Cancel



vRealize Automation Installation Wizard Logout

Deployment Type Help

Installation Prerequisites

**Prerequisite Checker**

vRealize Automation Host  
Single Sign-On  
IaaS Host  
Microsoft® SQL Server  
Distributed Execution Managers  
Agents  
vRealize Appliance Certificate  
Web Certificate  
Validation  
Create Snapshots  
Installation Details  
Licensing  
Telemetry  
Post-Installation Options

Run the prerequisite checker on each Windows machine to verify that it meets the requirements for installation.

Click Run to execute the prerequisite checker. If warnings appear, click Fix to start automatic corrections followed by restart of the machines or follow the instructions in the Action Required column. Click Run again to verify the fixes.

IaaS Host Name Status

Ow0000vivr001.uatdetsw.win ❌ Some prerequisites are not met. [Hide Details](#)

Rule	Status	Result	Action Required
IIS Server	✓	Installed	The module is installed. No action needed.
Check that IIS is able to reset	✓	Enabled	The module is enabled. No action needed.
IIS Server WindowsAuthentication Module	✓	Installed	The module is installed. No action needed.
IIS Server StaticContent Module	✓	Installed	The module is installed. No action needed.
IIS Server DefaultDocument Module	✓	Installed	The module is installed. No action needed.
IIS Server ASPNET Module	✓	Installed	The module is installed. No action needed.
IIS Server ASPNET45 Module	✓	Installed	The module is installed. No action needed.
IIS Server ISAPIExtensions Module	✓	Installed	The module is installed. No action needed.
IIS Server ISAPIFilter Module	✓	Installed	The module is installed. No action needed.
IIS Server WindowsAuthentication Status	✓	Enabled	The module is enabled. No action needed.
IIS Server WindowsAuthentication Negotiate Provider	✓	Enabled	The module is enabled. No action needed.
IIS Server WindowsAuthentication NTLM Provider	✓	Enabled	The module is enabled. No action needed.
IIS Server WindowsAuthentication Extended Protection	✓	Disabled	Windows Authentication Extended Protection option is turned off. No action needed.

Minimal Run Fix Previous Next Cancel

vRealize Automation Installation Wizard Logout

Deployment Type Help

Installation Prerequisites

**Prerequisite Checker**

vRealize Automation Host  
Single Sign-On  
IaaS Host  
Microsoft® SQL Server  
Distributed Execution Managers  
Agents  
vRealize Appliance Certificate  
Web Certificate  
Validation  
Create Snapshots  
Installation Details  
Licensing  
Telemetry  
Post-Installation Options

Run the prerequisite checker on each Windows machine to verify that it meets the requirements for installation.

IIS Server WindowsAuthentication Kernel Mode	✓	Enabled	The module is enabled. No action needed.
IIS Server AnonymousAuthentication Status	✓	Disabled	The module is disabled. No action needed.
Minimum Memory Requirement	✓	Resource requirement met	Sufficient amount of RAM present. No action needed.
IIS Server Web-based Distributed Authoring and Versioning	✓	Disabled	The module is disabled. No action needed.
Minimum Processor Requirement	✓	Resource requirement met	Processor meets minimum hardware requirements. No action needed.
Check that the current user profile is not temporary	✓	Profile is OK	The user profile is not temporary. No action needed.
Federal Information Processing Standards (FIPS)	✓	Disabled	Federal Information Processing Standards is disabled. No action needed.
Windows Process Activation Service/Application Services ConfigurationApi Role	✓	Installed	The module is installed. No action needed.
Windows Process Activation Service/Application Services NetEnvironment Role	✓	Installed	The module is installed. No action needed.
Windows Process Activation Service/Application Services ProcessModel Role	✓	Installed	The module is installed. No action needed.
Windows Process Activation Service/Application Services HttpActivation Role	✓	Installed	The module is installed. No action needed.
Windows Process Activation Service/Application Services NonHttpActivation Role	✓	Installed	The module is installed. No action needed.
Microsoft Windows Firewall	✓	Off	Windows Firewall is off. No action needed.
Microsoft Distributed Transaction Coordinator Service	✓	Running	The service is running, and MSDTC settings are correct.

Minimal Run Fix Previous Next Cancel

vRealize Automation Installation Wizard Logout

Deployment Type Help

Installation Prerequisites

**Prerequisite Checker**

Run the prerequisite checker on each Windows machine to verify that it meets the requirements for installation.

Windows Process Activation Service/Application Services NetEnvironment Role	✓	Installed	The module is installed. No action needed.
Windows Process Activation Service/Application Services ProcessModel Role	✓	Installed	The module is installed. No action needed.
Windows Process Activation Service/Application Services HttpActivation Role	✓	Installed	The module is installed. No action needed.
Windows Process Activation Service/Application Services NonHttpActivation Role	✓	Installed	The module is installed. No action needed.
Microsoft Windows Firewall	✓	Off	Windows Firewall is off. No action needed.
Microsoft Distributed Transaction Coordinator Service	✓	Running	The service is running, and MSDTC settings are correct.
Authentication loopback check	✓	Disabled	The module is disabled. No action needed.
Check that IIS ASPNET Impersonation Authentication is disabled	✓	Disabled	The module is disabled. No action needed.
Check that IIS Session State is configured correctly	✓	Enabled	The module is enabled. No action needed.
Windows PowerShell Version 3.0	✓	Installed	The module is installed. No action needed.
Check that TLS 1.2 is enabled	✓	Enabled	The module is enabled. No action needed.
Java 1.8 update 161(64-bit) status	✓	Installed	The module is installed. No action needed.
Check if reboot is pending	⚠	Pending	Reboot the machine.
Secondary Logon Service	✓	Running	The service is running. No action needed.
DEM Agent MSI Installer	✓	Present	MSI Installer files are present. No action needed.

Minimal Run Fix Previous Next Cancel

vRealize Automation Installation Wizard Logout

Deployment Type Help

Installation Prerequisites

**Prerequisite Checker**

Run the prerequisite checker on each Windows machine to verify that it meets the requirements for installation.

Click Run to execute the prerequisite checker. If warnings appear, click Fix to start automatic corrections followed by restart of the machines or follow the instructions in the Action Required column. Click Run again to verify the fixes.

IaaS Host Name	Status
Qw0000vivr001.uatdetsw.win	⌛ Waiting for host to trigger prerequisite check.
Restart Qw0000vivr001.uatdetsw.win	⌛ Waiting for host to trigger restart.

Minimal Run Fix Previous Next Cancel

vRealize Automation Installation Wizard Logout

✓ Deployment Type

✓ Installation Prerequisites

**Prerequisite Checker**

vRealize Automation Host

Single Sign-On

IaaS Host

Microsoft® SQL Server

Distributed Execution Managers

Agents

vRealize Appliance Certificate

Web Certificate

Validation

Create Snapshots

Installation Details

Licensing

Telemetry

Post-Installation Options

### Prerequisite Checker

Run the prerequisite checker on each Windows machine to verify that it meets the requirements for installation. [? Help](#)

Click Run to execute the prerequisite checker. If warnings appear, click Fix to start automatic corrections followed by restart of the machines or follow the instructions in the Action Required column. Click Run again to verify the fixes.

IaaS Host Name	Status
Qw0000vivr001.uatdetnsw.win	Waiting for host to trigger prerequisite check.
Restart Qw0000vivr001.uatdetnsw.win	Waiting for host to trigger restart.

Minimal Run Fix Previous Next Cancel

vRealize Automation Installation Wizard Logout

✓ Deployment Type

✓ Installation Prerequisites

**Prerequisite Checker**

vRealize Automation Host

Single Sign-On

IaaS Host

Microsoft® SQL Server

Distributed Execution Managers

Agents

vRealize Appliance Certificate

Web Certificate

Validation

Create Snapshots

Installation Details

Licensing

Telemetry

Post-Installation Options

### Prerequisite Checker

Run the prerequisite checker on each Windows machine to verify that it meets the requirements for installation. [? Help](#)

Click Run to execute the prerequisite checker. If warnings appear, click Fix to start automatic corrections followed by restart of the machines or follow the instructions in the Action Required column. Click Run again to verify the fixes.

IaaS Host Name	Status
Qw0000vivr001.uatdetnsw.win	OK <a href="#">Show Details</a>
Restart Qw0000vivr001.uatdetnsw.win	OK

Minimal Run Fix Previous Next Cancel

vRealize Automation Installation Wizard Logout

- ✓ Deployment Type
- ✓ Installation Prerequisites
- ✓ Prerequisite Checker
- vRealize Automation Host
- Single Sign-On
- IaaS Host
- Microsoft® SQL Server
- Distributed Execution Managers
- Agents
- vRealize Appliance Certificate
- Web Certificate
- Validation
- Create Snapshots
- Installation Details
- Licensing
- Telemetry
- Post-Installation Options

## vRealize Automation Host

Resolve Automatically  
 Enter Host

Enter the DNS alias or FQDN of the Virtual Appliance. If you have customers outside of your organization you need to enter a public DNS alias that can be resolved by them.

\* vRealize Address

Example:  
FQDN: my-vra.my.company.com

Minimal

vRealize Automation Installation Wizard Logout

- ✓ Deployment Type
- ✓ Installation Prerequisites
- ✓ Prerequisite Checker
- ✓ vRealize Automation Host
- Single Sign-On
- IaaS Host
- Microsoft® SQL Server
- Distributed Execution Managers
- Agents
- vRealize Appliance Certificate
- Web Certificate
- Validation
- Create Snapshots
- Installation Details
- Licensing
- Telemetry
- Post-Installation Options

## Single Sign-On

Enter a password to assign system administrator credentials for the default tenant account.  
Record the user name and password in a secure place for later use.

\* Administrator password

\* Confirm password

The password should:  
 \*be 8 characters or longer  
 \*have at least one uppercase character  
 \*have at least one lowercase character  
 \*have at least one numeric digit  
 \*have at least one special character [!@#%&\*"]  
 \*not contain \, " and non ASCII characters

Minimal

vRealize Automation Installation Wizard Logout

- ✓ Deployment Type
- ✓ Installation Prerequisites
- ✓ Prerequisite Checker
- ✓ vRealize Automation Host
- ✓ Single Sign-On
- IaaS Host
- Microsoft® SQL Server
- Distributed Execution Managers
- Agents
- vRealize Appliance Certificate
- Web Certificate
- Validation
- Create Snapshots
- Installation Details
- Licensing
- Telemetry
- Post-Installation Options

### IaaS Host

? Help

✓ All parameters are valid.

Enter the DNS alias or FQDN of the IaaS Web server.

\* IaaS Web Address

Install IaaS Components on

\* Username

\* Password

**Database Security**  
Enter a passphrase for the Microsoft® SQL database. Use the same encryption passphrase for all components in a distributed environment. Record the passphrase in a secure place for later use.

\* Security Passphrase

\* Confirm Passphrase

Minimal Validate Previous Next Cancel

vRealize Automation Installation Wizard Logout

- ✓ Deployment Type
- ✓ Installation Prerequisites
- ✓ Prerequisite Checker
- ✓ vRealize Automation Host
- ✓ Single Sign-On
- ✓ IaaS Host
- Microsoft® SQL Server
- Distributed Execution Managers
- Agents
- vRealize Appliance Certificate
- Web Certificate
- Validation
- Create Snapshots
- Installation Details
- Licensing
- Telemetry
- Post-Installation Options

### Microsoft® SQL Server

? Help

Create a Microsoft® SQL server database. The database is used to maintain information about managed machines and associated elements and policies.

✓ All parameters are valid.

\* Server name:  ⓘ

\* Database name:

Create new database  
 Use existing empty database

Default settings ⓘ  
 Use SSL for database connection ⓘ  
 Windows Authentication

**Security Requirements**  
The account that runs the Management Agent on the main website server needs to have System Administrator rights on the SQL server. The users configured for the Website and Manager Service components need to have db\_owner permission on the database.

Minimal Validate Previous Next Cancel

vRealize Automation Installation Wizard Logout

- ✓ Deployment Type
- ✓ Installation Prerequisites
- ✓ Prerequisite Checker
- ✓ vRealize Automation Host
- ✓ Single Sign-On
- ✓ IaaS Host
- ✓ Microsoft® SQL Server
- Distributed Execution Managers
- Agents
- vRealize Appliance Certificate
- Web Certificate
- Validation
- Create Snapshots
- Installation Details
- Licensing
- Telemetry
- Post-Installation Options

### Distributed Execution Managers ? Help

Specify configuration information for each Distributed Execution Manager (DEM) in your deployment. Assign a name to each DEM instance and provide the username and password for the host machine.

✓ All parameters are valid.

+

IaaS Host Name	* Instance Name	* Username	* Password	Instance Description (Optional)	Installation Path (Optional)
Qw0000vivr001.uatdetsw.win	DEM	uatdetsw/SRVVMVRA001	*****	DEM	(Optional)

Minimal Validate Previous Next Cancel

vRealize Automation Installation Wizard Logout

- ✓ Deployment Type
- ✓ Installation Prerequisites
- ✓ Prerequisite Checker
- ✓ vRealize Automation Host
- ✓ Single Sign-On
- ✓ IaaS Host
- ✓ Microsoft® SQL Server
- ✓ Distributed Execution Managers
- Agents
- vRealize Appliance Certificate
- Web Certificate
- Validation
- Create Snapshots
- Installation Details
- Licensing
- Telemetry
- Post-Installation Options

### Agents ? Help

You can optionally install agents for your deployment. Select a machine to host the agent and the agent type from the drop-down menus and complete the configuration values.

✓ All parameters are valid.

For high-availability mode, you must install two or more instances of the same agent on different servers. Give each instance of the agent the same agent name and the same endpoint name.

+

IaaS Host Name	Agent Name	Endpoint	Installation Path (Optional)
Qw0000vivr001.uatdetsw.win	vCenter	vCenter	(Optional)

Agent Type	Username
vSphere	uatdetsw/SRVVMVRA001

Password
*****

Minimal Validate Previous Next Cancel



vRealize Automation Installation Wizard Logout

- ✓ Deployment Type
- ✓ Installation Prerequisites
- ✓ Prerequisite Checker
- ✓ vRealize Automation Host
- ✓ Single Sign-On
- ✓ IaaS Host
- ✓ Microsoft® SQL Server
- ✓ Distributed Execution Managers
- ✓ Agents
- vRealize Appliance Certificate**
- Web Certificate
- Validation
- Create Snapshots
- Installation Details
- Licensing
- Telemetry
- Post-Installation Options

### vRealize Appliance Certificate ? Help

Select a certificate type from the Certificate Action menu. If you are using a PEM-encoded certificate, for example for a distributed environment, select Import. The Generate Certificate option generates a self-signed certificate.

\* Certificate Action  Keep Existing

Generate Certificate

Generate Signing Request

Import

Common Name qa0000vivr001.vi.uat.det.nsw.edu.au

\* Organization

\* Organizational Unit

\* Country Code

Serial 9EB454669BCB8866

Fingerprint 3A:B1:19:82:B0:90:AF:00:97:62:87:47:C3:9B:64:10:A7:A4:F7:E9

Valid since Sep 03 01:03:06 2018 GMT

Valid to Sep 02 01:03:06 2023 GMT

Minimal

Previous
Next
Cancel

vRealize Automation Installation Wizard Logout

- ✓ Deployment Type
- ✓ Installation Prerequisites
- ✓ Prerequisite Checker
- ✓ vRealize Automation Host
- ✓ Single Sign-On
- ✓ IaaS Host
- ✓ Microsoft® SQL Server
- ✓ Distributed Execution Managers
- ✓ Agents
- ✓ vRealize Appliance Certificate
- Web Certificate**
- Validation
- Create Snapshots
- Installation Details
- Licensing
- Telemetry
- Post-Installation Options

### Web Certificate ? Help

Select and save a certificate type from the Certificate Action menu.

If you are using a PEM-encoded certificate, select Import Certificate. Select Generate Certificate to create a self-signed certificate; Select Generate Signing Request to create a certificate signing request, download it from the link and use the "Import" option to upload the signed certificate in PEM format or Provide Certificate Thumbprint to use a Certificate that is already deployed in the certificate store on the IaaS servers.

\* Certificate Action  Keep Existing

Generate Certificate

Generate Signing Request

Import Certificate

Provide Certificate Thumbprint

Common Name qw0000vivr001.vi.uat.det.nsw.edu.au

\* Organization

\* Organizational Unit

\* Country Code

Serial DE50DCC31CD0E9AC

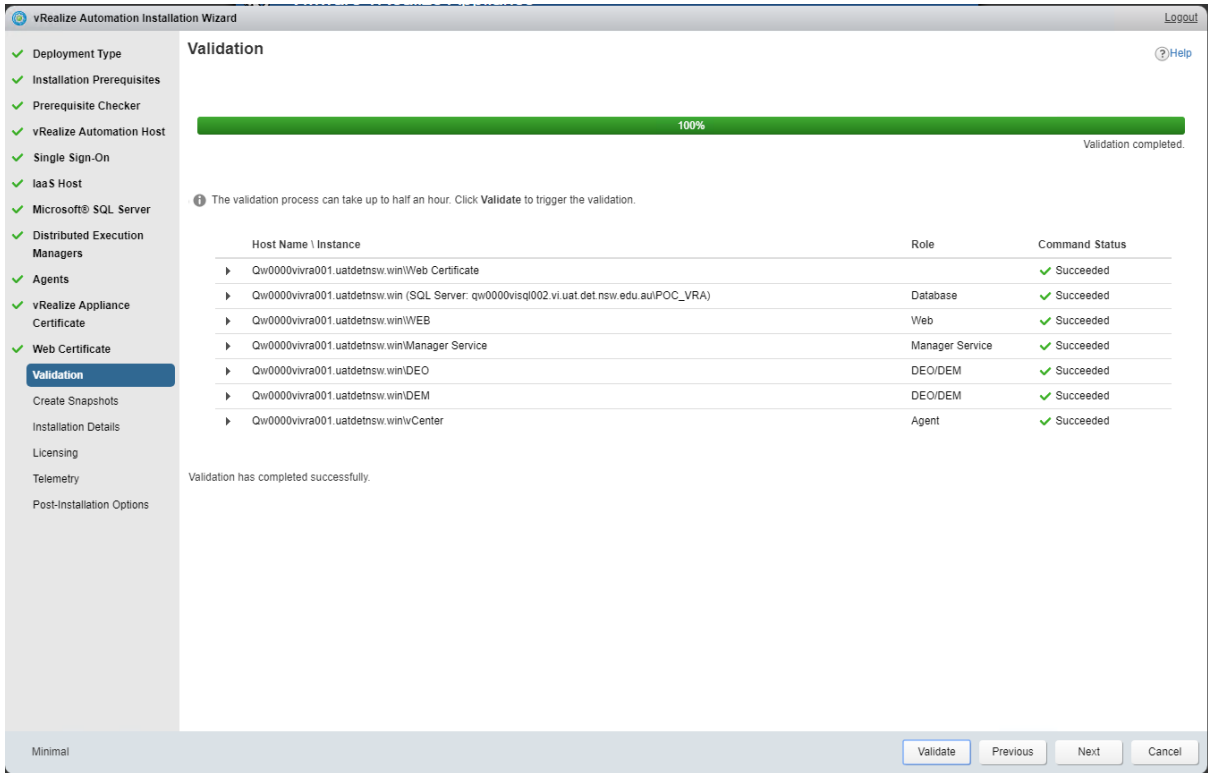
Fingerprint 19:7B:1B:40:FB:82:5A:32:35:54:87:12:4E:56:08:74:0A:6B:EE:2D

Valid since Sep 03 01:04:21 2018 GMT

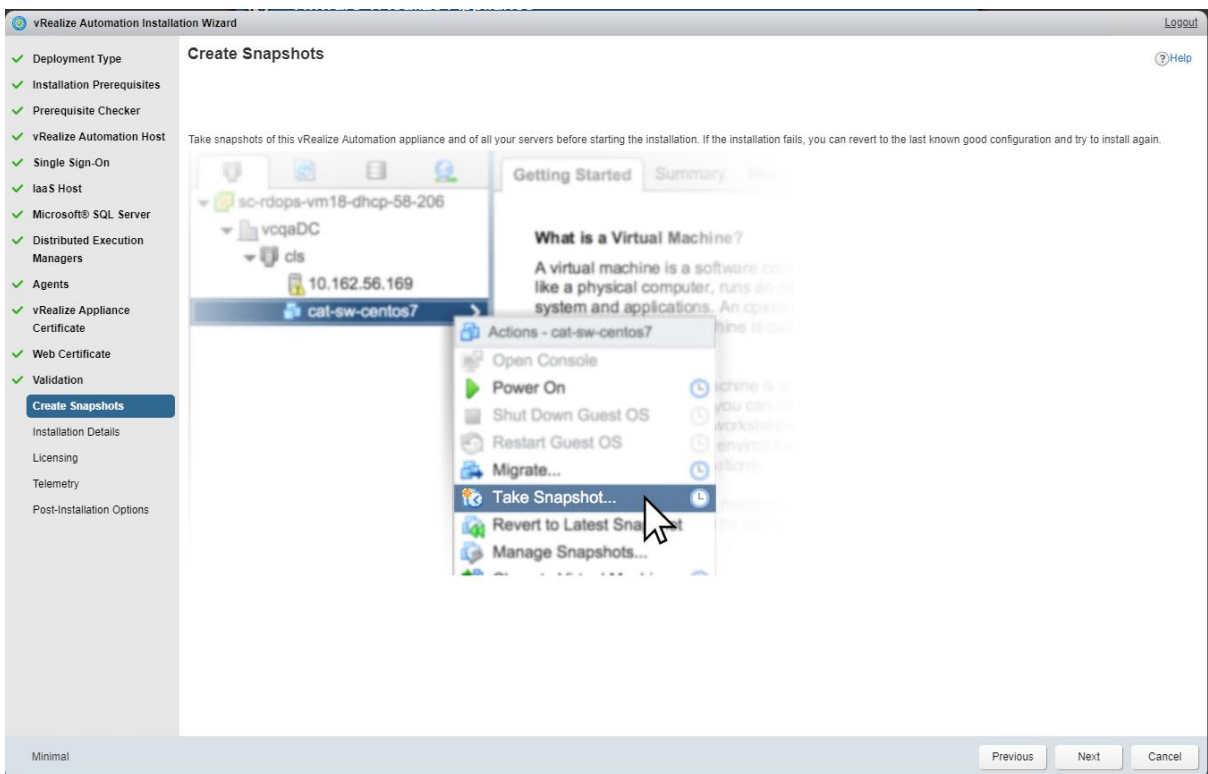
Valid to Sep 02 01:04:21 2023 GMT

Minimal

Previous
Next
Cancel



Snapshots taken of Appliance, IaaS Windows VM & SQL VM



Install kicked off

vRealize Automation Installation Wizard Logout

- ✓ Deployment Type
- ✓ Installation Prerequisites
- ✓ Prerequisite Checker
- ✓ vRealize Automation Host
- ✓ Single Sign-On
- ✓ IaaS Host
- ✓ Microsoft® SQL Server
- ✓ Distributed Execution Managers
- ✓ Agents
- ✓ vRealize Appliance Certificate
- ✓ Web Certificate
- ✓ Validation
- ✓ Create Snapshots
- Installation Details
- Licensing
- Telemetry
- Post-Installation Options

### Installation Details Help

0% Installation is in progress.

*Retry Failed* button allows retrying of single or multiple failed commands. Depending on the reason for failure some commands cannot be retried. If *Retry Failed* is enabled you can retry the failed command without the need to revert to snapshots.

*Retry All IaaS* button retries all installation commands for IaaS components only. All IaaS servers must be reverted to the snapshots created on the snapshot page before the installation is retried. The Microsoft SQL database needs to be deleted if you are using an external SQL server.

To change input or restart the whole installation after the installation has started revert all Virtual Appliances and IaaS machines and start installation again.

Host Name \ Instance	Role	Command Status
▶ Configure Single Sign-On	VA	⌛ Pending
▶ Configure Postgres	VA	⌛ Pending
▶ Verify that all services are started	VA	⌛ Pending
▶ Qw0000vivr001.uatdetnsw.win\Web Certificate		⌛ Pending
▶ Qw0000vivr001.uatdetnsw.win (SQL Server: qw0000visq002.vi.uat.det.nsw.edu.au/POC_VRA)	Database	⌛ Pending
▶ Qw0000vivr001.uatdetnsw.win\WEB	Web	⌛ Pending
▶ Qw0000vivr001.uatdetnsw.win\Manager Service	Manager Service	⌛ Pending
▶ Qw0000vivr001.uatdetnsw.win\DEO	DEO/DEM	⌛ Pending
▶ Qw0000vivr001.uatdetnsw.win\DEM	DEO/DEM	⌛ Pending
▶ Qw0000vivr001.uatdetnsw.win\Center	Agent	⌛ Pending

⚠ Before using the *Retry All IaaS* revert all the IaaS machines to the *snapshot* created on the previous page.

Minimal

vRealize Automation Installation Wizard Logout

- ✓ Deployment Type
- ✓ Installation Prerequisites
- ✓ Prerequisite Checker
- ✓ vRealize Automation Host
- ✓ Single Sign-On
- ✓ IaaS Host
- ✓ Microsoft® SQL Server
- ✓ Distributed Execution Managers
- ✓ Agents
- ✓ vRealize Appliance Certificate
- ✓ Web Certificate
- ✓ Validation
- ✓ Create Snapshots
- Installation Details
- Licensing
- Telemetry
- Post-Installation Options

### Installation Details Help

50% Installation failed

*Retry Failed* button allows retrying of single or multiple failed commands. Depending on the reason for failure some commands cannot be retried. If *Retry Failed* is enabled you can retry the failed command without the need to revert to snapshots.

*Retry All IaaS* button retries all installation commands for IaaS components only. All IaaS servers must be reverted to the snapshots created on the snapshot page before the installation is retried. The Microsoft SQL database needs to be deleted if you are using an external SQL server.

To change input or restart the whole installation after the installation has started revert all Virtual Appliances and IaaS machines and start installation again.

Host Name \ Instance	Role	Command Status
▶ Configure Single Sign-On	VA	✓ Succeeded
▶ Configure Postgres	VA	✓ Succeeded
▶ Verify that all services are started	VA	✓ Succeeded
▶ Qw0000vivr001.uatdetnsw.win\Web Certificate		✓ Succeeded
▶ Qw0000vivr001.uatdetnsw.win (SQL Server: qw0000visq002.vi.uat.det.nsw.edu.au/POC_VRA)	Database	✓ Succeeded
▶ Qw0000vivr001.uatdetnsw.win\WEB	Web	✗ Failed
▶ Qw0000vivr001.uatdetnsw.win\Manager Service	Manager Service	⛔ Cannot be executed (previous step failed)
▶ Qw0000vivr001.uatdetnsw.win\DEO	DEO/DEM	⛔ Cannot be executed (previous step failed)
▶ Qw0000vivr001.uatdetnsw.win\DEM	DEO/DEM	⛔ Cannot be executed (previous step failed)
▶ Qw0000vivr001.uatdetnsw.win\Center	Agent	⛔ Cannot be executed (previous step failed)

⚠ Before using the *Retry All IaaS* revert all the IaaS machines to the *snapshot* created on the previous page.

Minimal