

# **vCO vCheck**

*Deployment Instructions*

## Introducing vCO vCheck

vCO vCheck is a clone of Alan Renouf's and many others [PowerCLI vCheck for vSphere](#). 90% of the PowerCLI plug-ins scripts have been re-coded to vCO JavaScript workflows.

### *Warning*

This is alpha code with limited testing with the lab environment that I have access to. Do not run these workflows in a production environment before testing first!

### *Limitations*

Currently emailing the report has not been implemented. Also the following workflows are not implemented:

vCenter Services (041)	VMkernel Warnings (044)
vCenter Windows Error Event Log (042)	Missing ESX Patches (046)
vCenter Windows Warning Event Log (043)	Snapshots Oversized (064)
Capacity Planing (071)	ESXi Inode Usage (101)

### *Requirements*

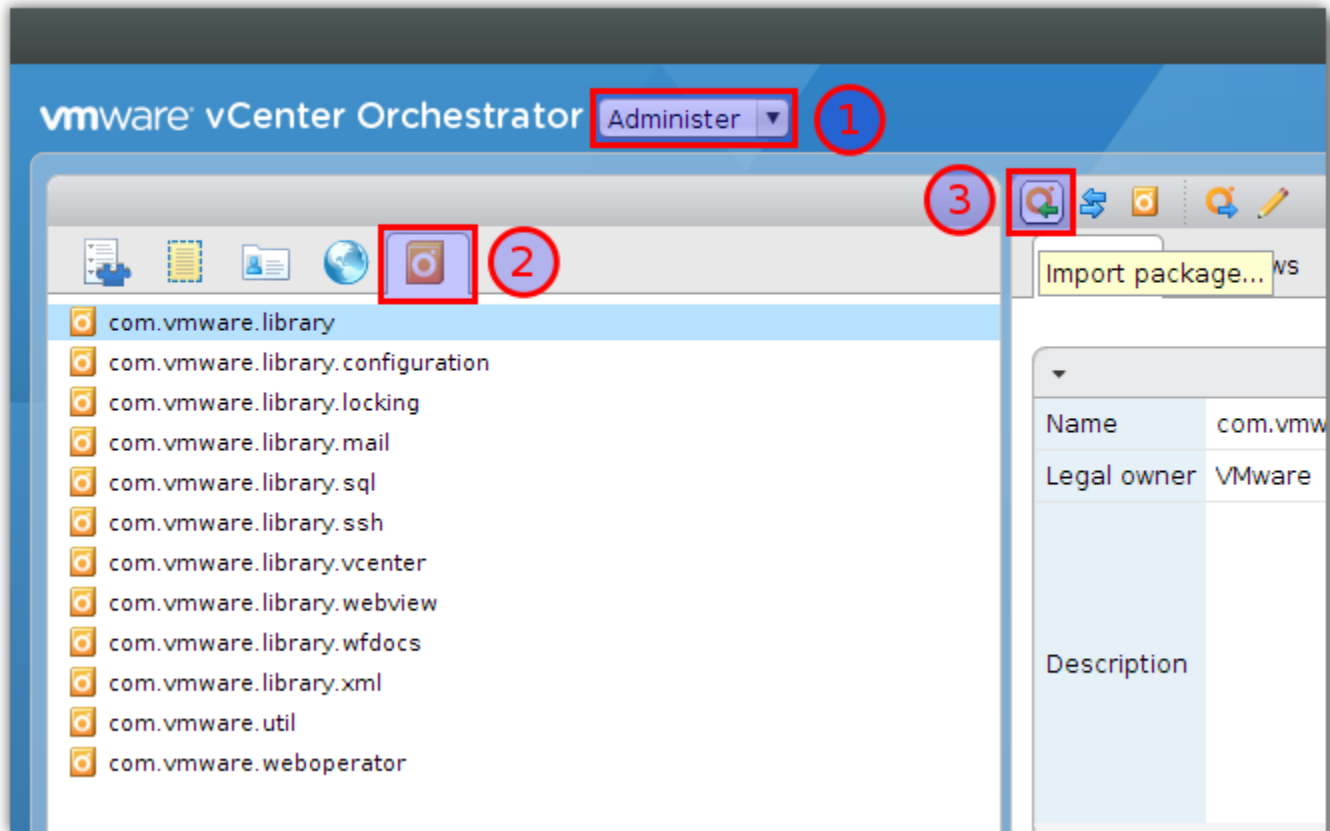
In this first release of vCO vCheck no plug-ins except vCenter. The vCenter plug-in should be configured to whatever vCenter you want a report on. In later versions the PowerShell and RESTful plug-ins maybe required.

The below table shows the versions of vCO and vSphere that have been tested and should work correctly.

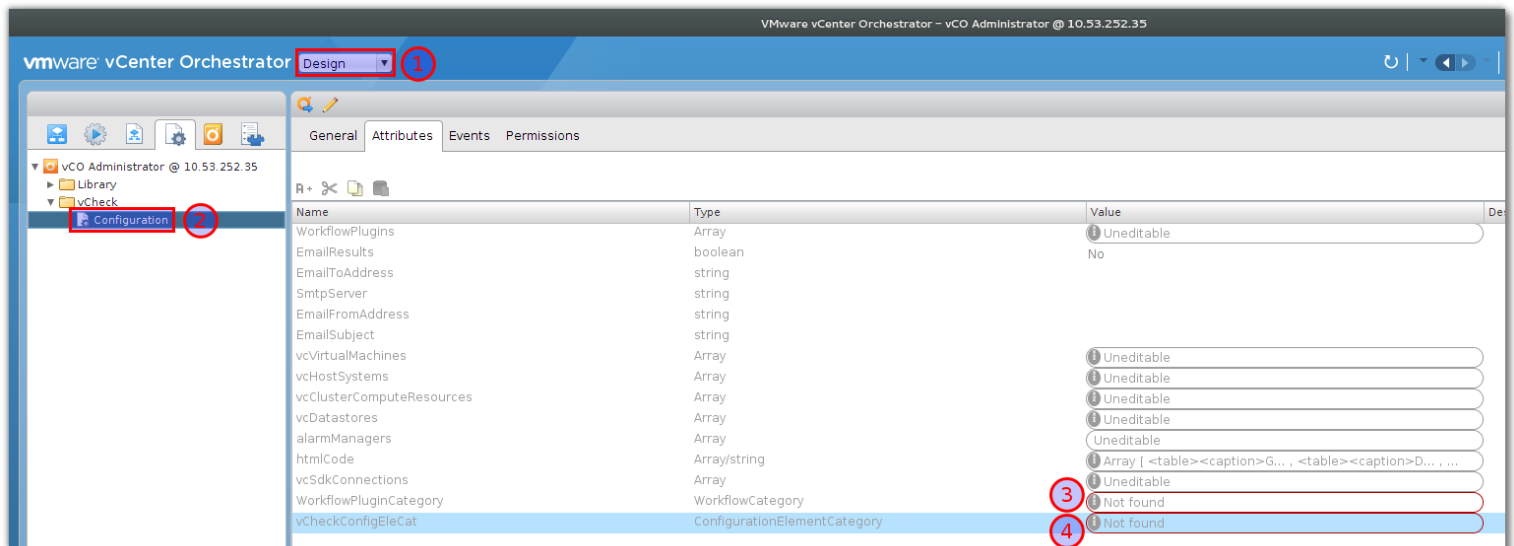
vCO Version	Tested and Functions	vSphere Version	Tested and Functions
4.2 U2	No	5.0 U2	No, issues with vCO 4.2 U2
5.1 U1	Yes	5.0 U2	Yes
5.1 U1	Yes	5.1 U1	Yes
5.5	Yes	5.5	Yes

### *Installation*

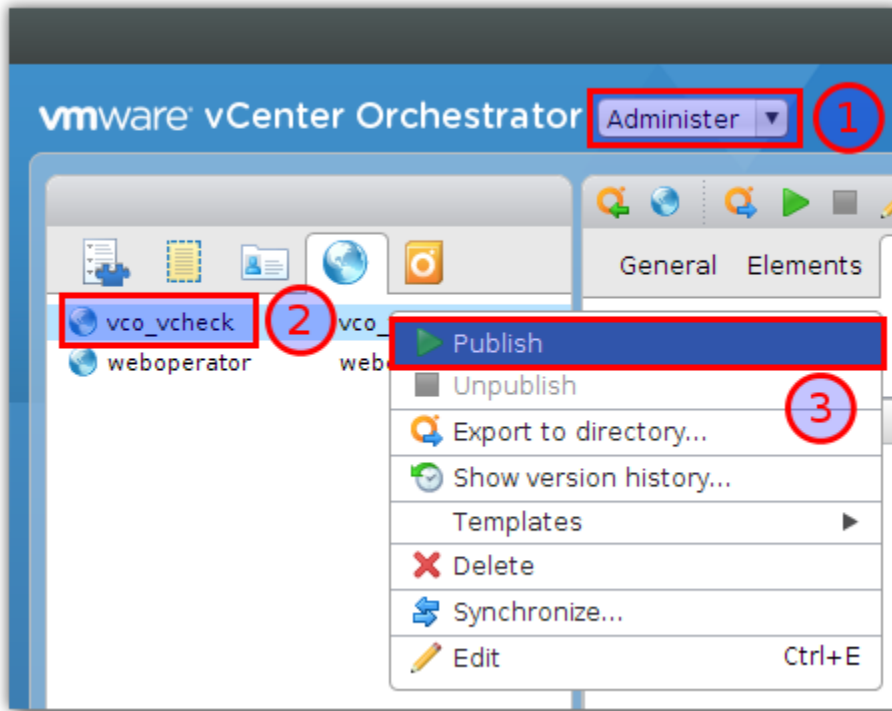
Use VMware's documentation to setup a vCO if you are using the appliance or older versions of vSphere (pre-5.1). All the screenshots are based on vCO 5.5 but will be applicable to any version.



1. Switch to the Administer view, 2. Select packages, 3. Click “Import package...”
4. Select the package and press open.
5. Click “Import and trust provider”

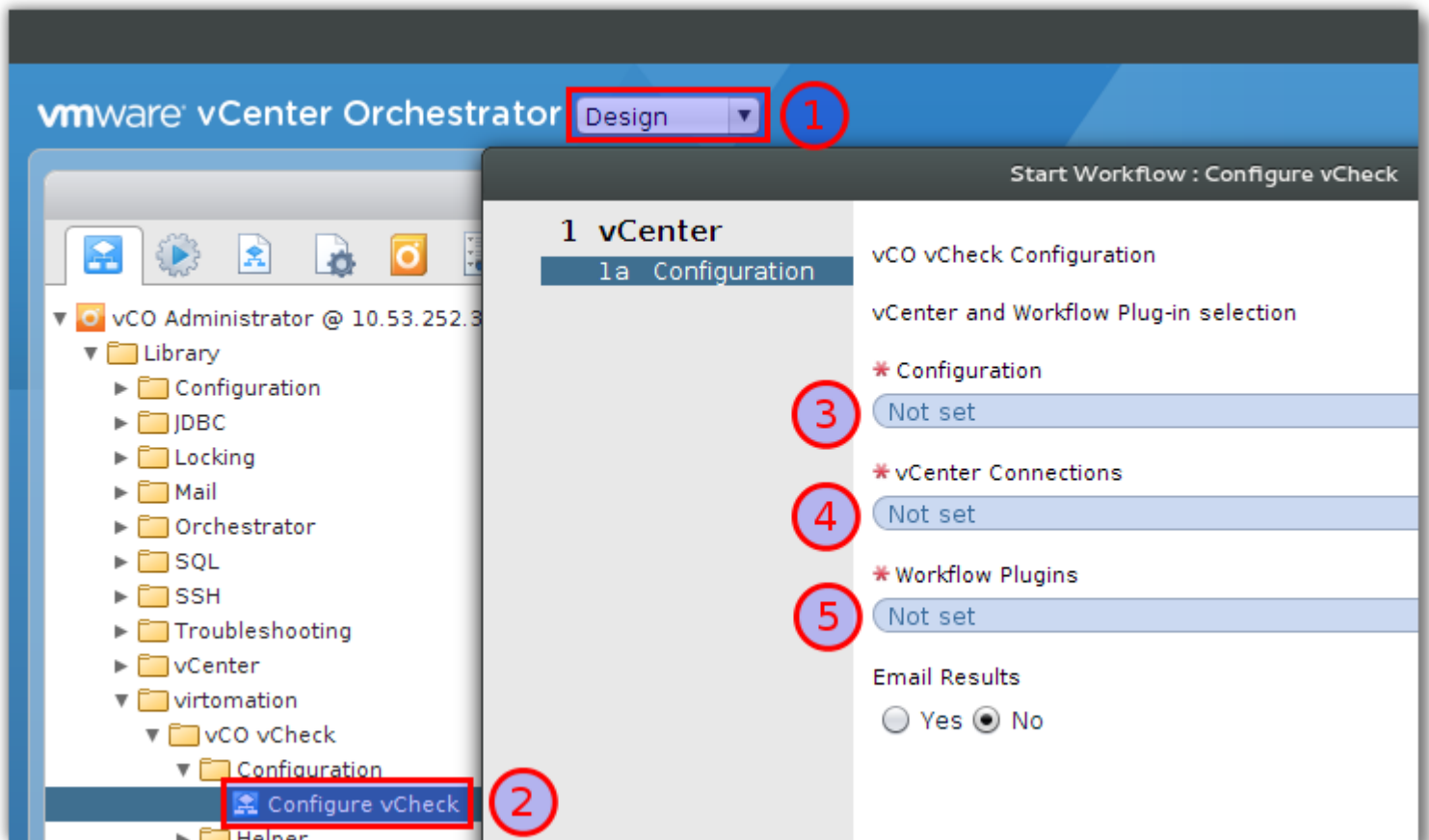


1. Switch to the Design view, 2. Edit Configuration under the vCheck folder
3. For WorkflowPluginCategory search for “Plugins” and click Select.
4. For vCheckConfigEleCat search for “vCheck” and click Select. Then click “Save and Close”.



1. Switch to the Administer view, 2. Select web views, 3. Right click “vco\_vcheck”, then click “Publish”

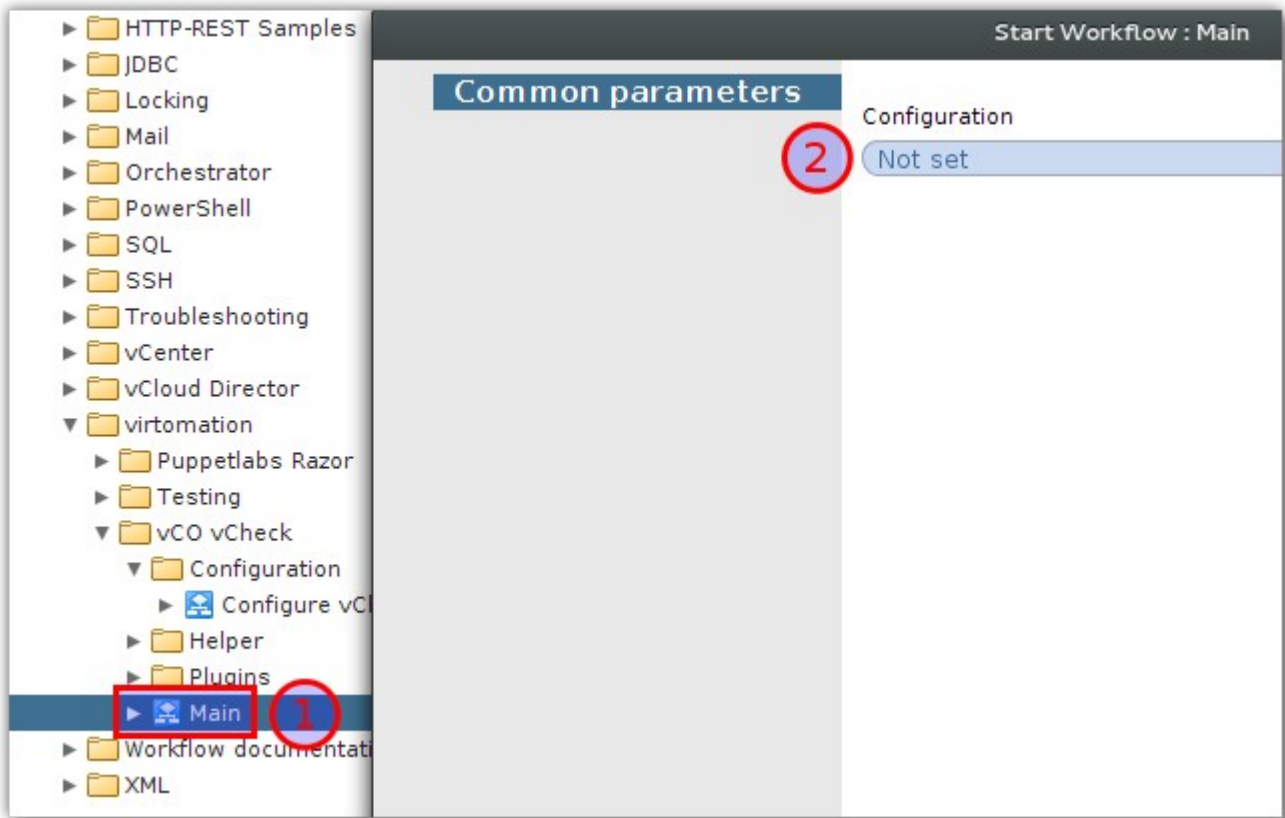
### Configure vCO vCheck



1. Switch to the Design view, 2. Start Workflow “Configure vCheck”
3. Select the vCheck configuration element

4. Add your vCenter connections
5. Select the workflows aka plug-ins you wish to execute.

### Execute vCO vCheck Main workflow

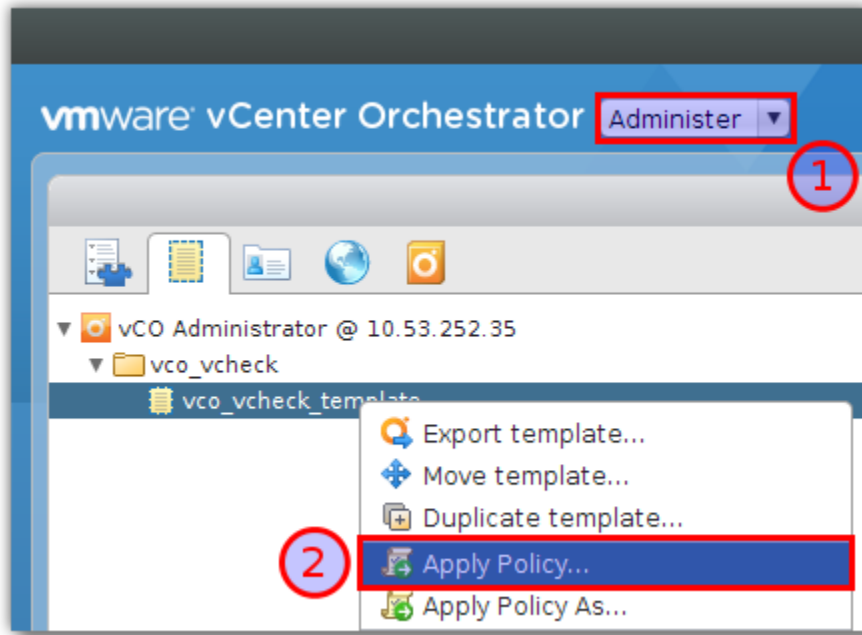


1. Start Workflow “Main”, 2. Select the vCheck configuration element.

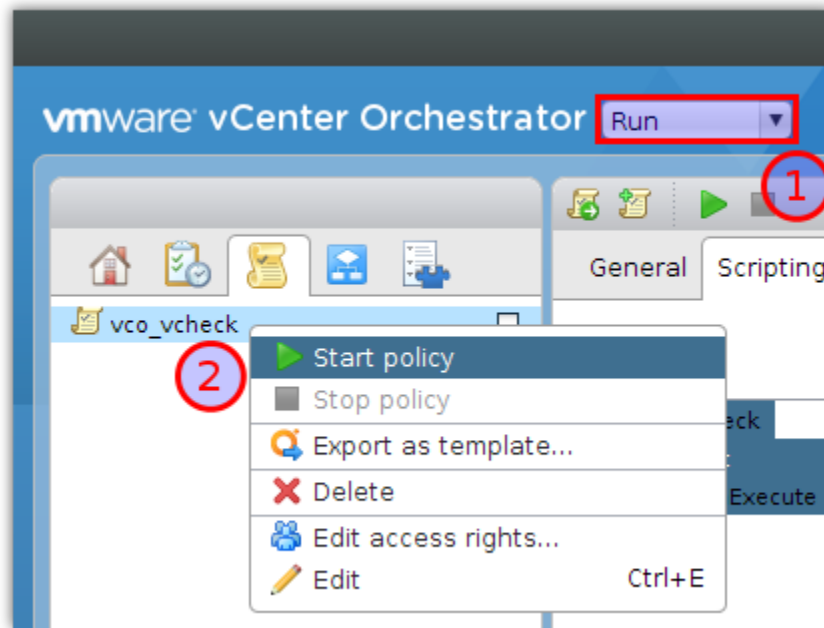
Once the workflows are complete open your browser to:

Pre-5.5 – [https://\[ORCH\\_IP\\_ADDRESS\]:8281/vmo/vco\\_vcheck/default.html](https://[ORCH_IP_ADDRESS]:8281/vmo/vco_vcheck/default.html)  
5.5 – [https://\[ORCH\\_IP\\_ADDRESS\]:8281/vco/vmo/vco\\_vcheck/default.html](https://[ORCH_IP_ADDRESS]:8281/vco/vmo/vco_vcheck/default.html)

## To enable vCO vCheck to run on schedule



1. Switch to the Administer view, 2. Select policy templates, 3. Right click “vco\_vcheck\_template”, then click “Apply Policy...”. Type your policy name and press “Submit”.



1. Switch to the Run view, select policies, 2. Right click “vco\_vcheck”, then click “Start Policy”. Now vCO vCheck will run at 12:00 AM. You can modify this to whatever time makes most sense for your environment.