



VMUG
VMWARE USER GROUP

Your Link to the VMware Community

best practices blog browser

code content cookie persis

data encryption denial

dy Salvador del Real

bal s.delreal@f5.com

n detection IPsec IPv6 Rules

open source optimization

F5 & VMware

BARCELONA
16 de Septiembre 2011



IT agility. Your way.

AGENDA



- Presentación de F5 y posicionamiento
- Soluciones de F5
 - Como ayuda F5 a vmware
- Autoaprovisionamiento
 - DEMO
- Ruegos y Preguntas

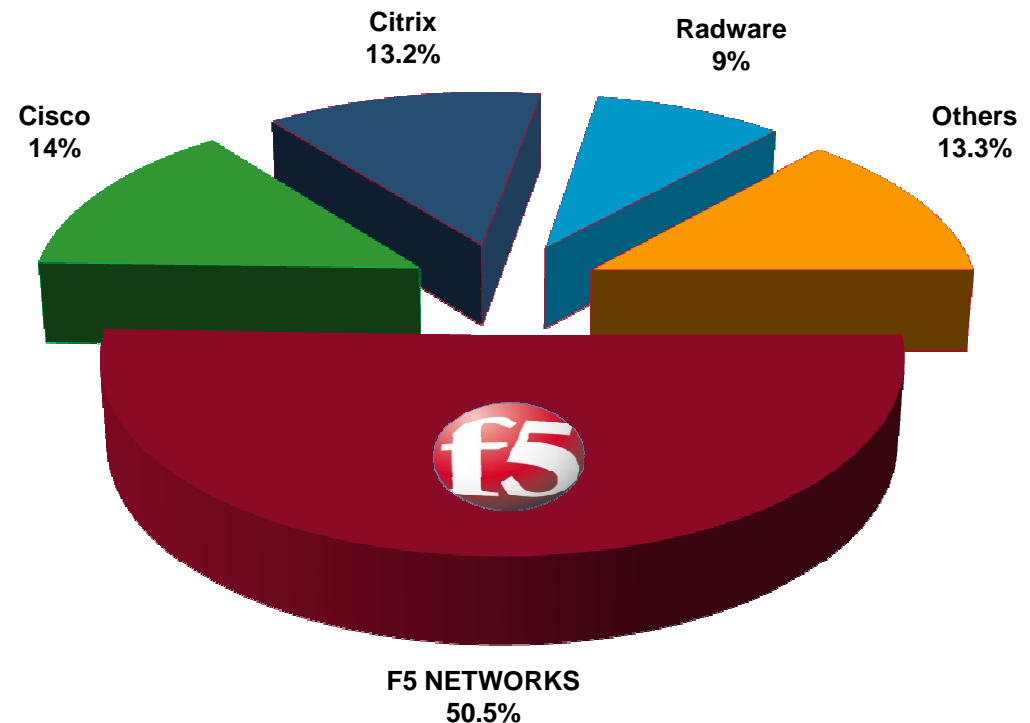


F5 in WW ADC Market for 1Q11

- ❖ 1Q11 ADC* Market Share Leaders
 - F5 : 50.5%
 - Cisco: 14%
 - Citrix: 13.2%
- ❖ 1Q11 ADC Market Share Revenue Leaders
 - F5: \$168.9 Million
 - Cisco: \$47 Million
 - Citrix: \$44.1 Million
- ❖ 1Q11 ADC Q/Q Revenue Growth
 - F5: 2.8%
 - Cisco: -23.0%
 - Citrix: -15.2%
- ❖ 1Q11 ADC Total Market Numbers
 - Revenue: \$334.7 Million
 - Q/Q Revenue Growth: -8.5%

**Application Delivery Controller (ADC) Segment Includes: Server Load Balancing/Layers 4-7 Switching and Advanced (Integrated) Platforms. Graphic created by F5 based on Gartner data.*

1Q11 Gartner ADC Market Share



F5 in WW Advanced Platform ADC Market for 1Q11

❖ 1Q11 Advanced Platform ADC* Market Share Leaders

- F5: 62.5%
- Citrix: 16.3%
- Radware: 11.1%

❖ 1Q11 Advanced Platform ADC Market Share Revenue Leaders

- F5: \$168.9 Million
- Citrix: \$44.1 Million
- Radware: \$30.1 Million

❖ 1Q11 Advanced Platform ADC Q/Q Revenue Growth

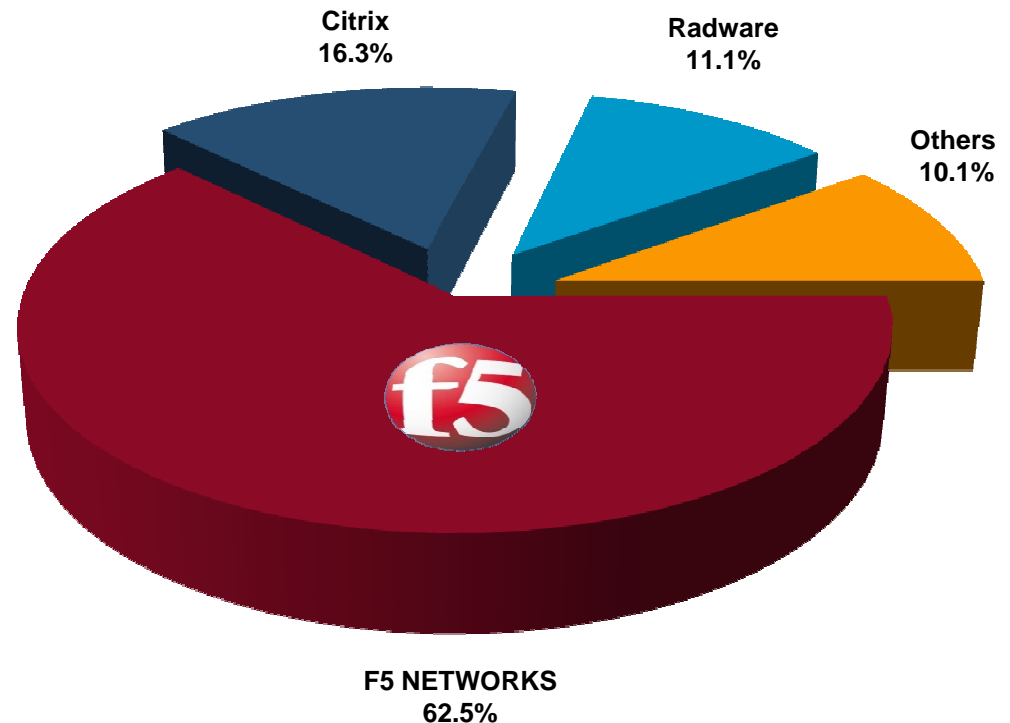
- F5: 2.79%
- Citrix: -15.19%
- Radware: 1.5 %

❖ 1Q11 Advanced Platform ADC Total Market Numbers

- Revenue: \$270.2 Million
- Q/Q Revenue Growth: -4.32%

**Advanced Platform Segment Includes: ADCs that integrate several functions (typically more than four) on a single platform (for example, load balancing, TCP, connection management, SSL offload, compression and caching).
Graphic created by F5 based on Gartner data.*

1Q11 Gartner Advanced Platform ADC Market Share



F5 & VMware



- F5 & VMware son partners activos
- Interoperabilidad y Test de rendimiento
 - vSphere, vCenter, AppSpeed, SRM, View, etc.
- Desarrollo de guías de despliegue
- Planes de desarrollo conjuntos en progreso
- Equipos de alianzas dedicados
- [Technology Innovator of the Year](#)



Que hace F5 para lo partners de vmware

1. F5 ayuda a hacer upselling de sus productos

(ej. vMotion, Storage vMotion, DRS, HA, SRM, etc.)

2. F5 habilita a VMware a ofrecer una solución completa

(ej. vMotion en grandes despliegues con altas latencias)

3. F5 ayuda a los clientes a la transición hacia la virtualización de aplicaciones



PRODUCTOS F5 Networks

- BIG-IP (ADC)
- Firepass (VPN SSL)
- Enterprise Manager (Gestión)
- ARX (Virtualizacion de Ficheros)



BIG-IP MODULOS PRODUCTO

- LTM (Local Traffic Manager)
- GTM (Global Traffic Manager)
- LC (Link Controller)
- WAM (Web Accelerator Module)
- WOM (Wan Optimization Module)
- ASM (Application Security Module)
- APM (Access Policy Manager)
- EDGE GATEWAY



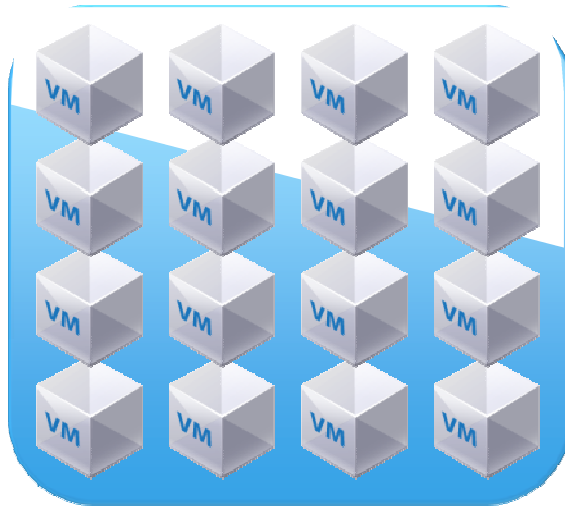
best practices · blog · browser
code · content · cookie · persis
data center · decryption · denial o
dynamic infrastructure
bal · green IT · hardware · HTT
n detection · IPsec · IPv6 · iRules
open source · optimization

Como ayuda F5 a vmware



IT agility. Your way.

Recursos offload que provee BIG-IP



Servidor Virtual típico



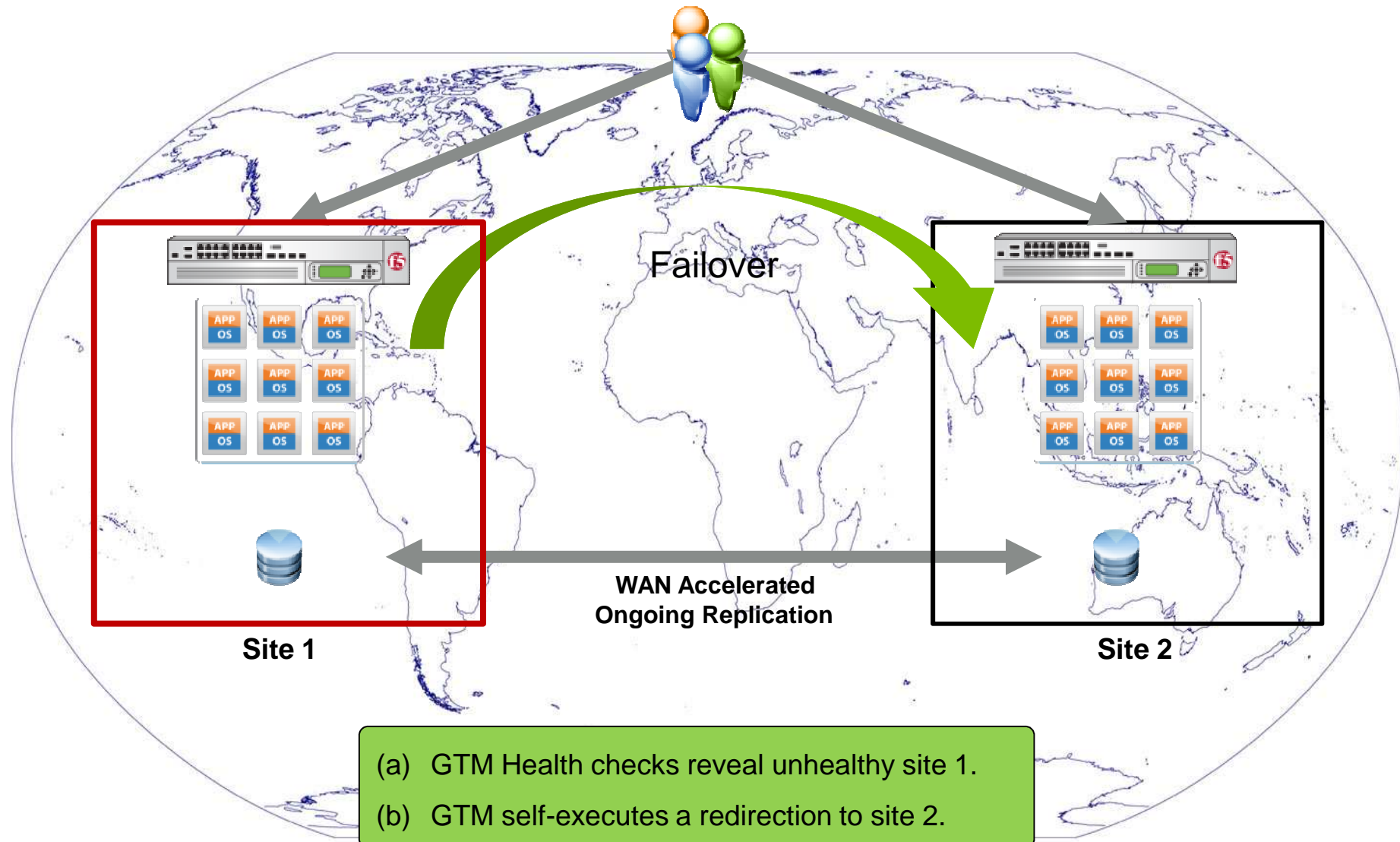
Mismo servidor con



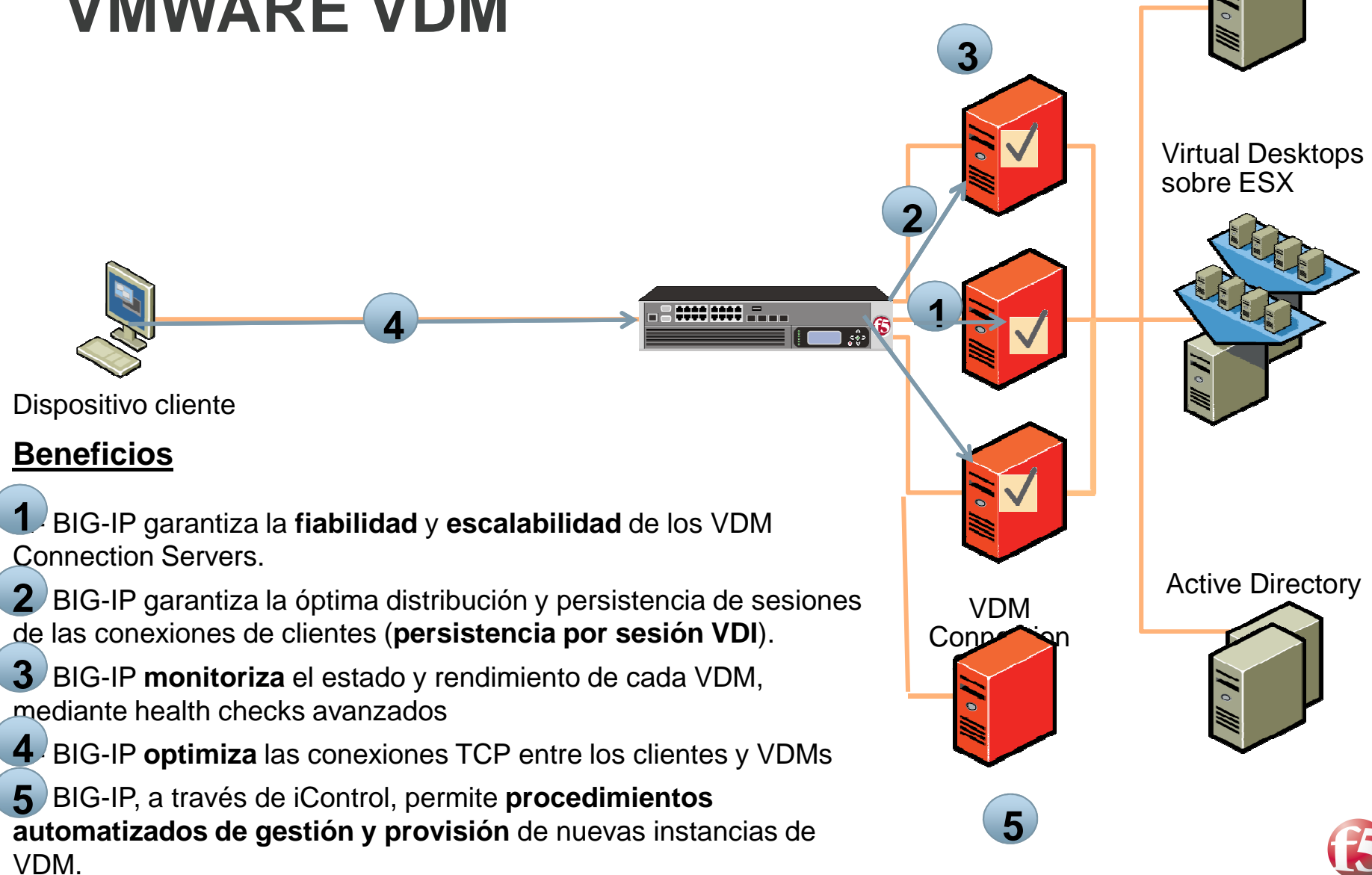
- SSL
- Caching
- Compression
- One Connect
- TCP Optimization

Ahorro hasta del 40% en recursos de Servidor

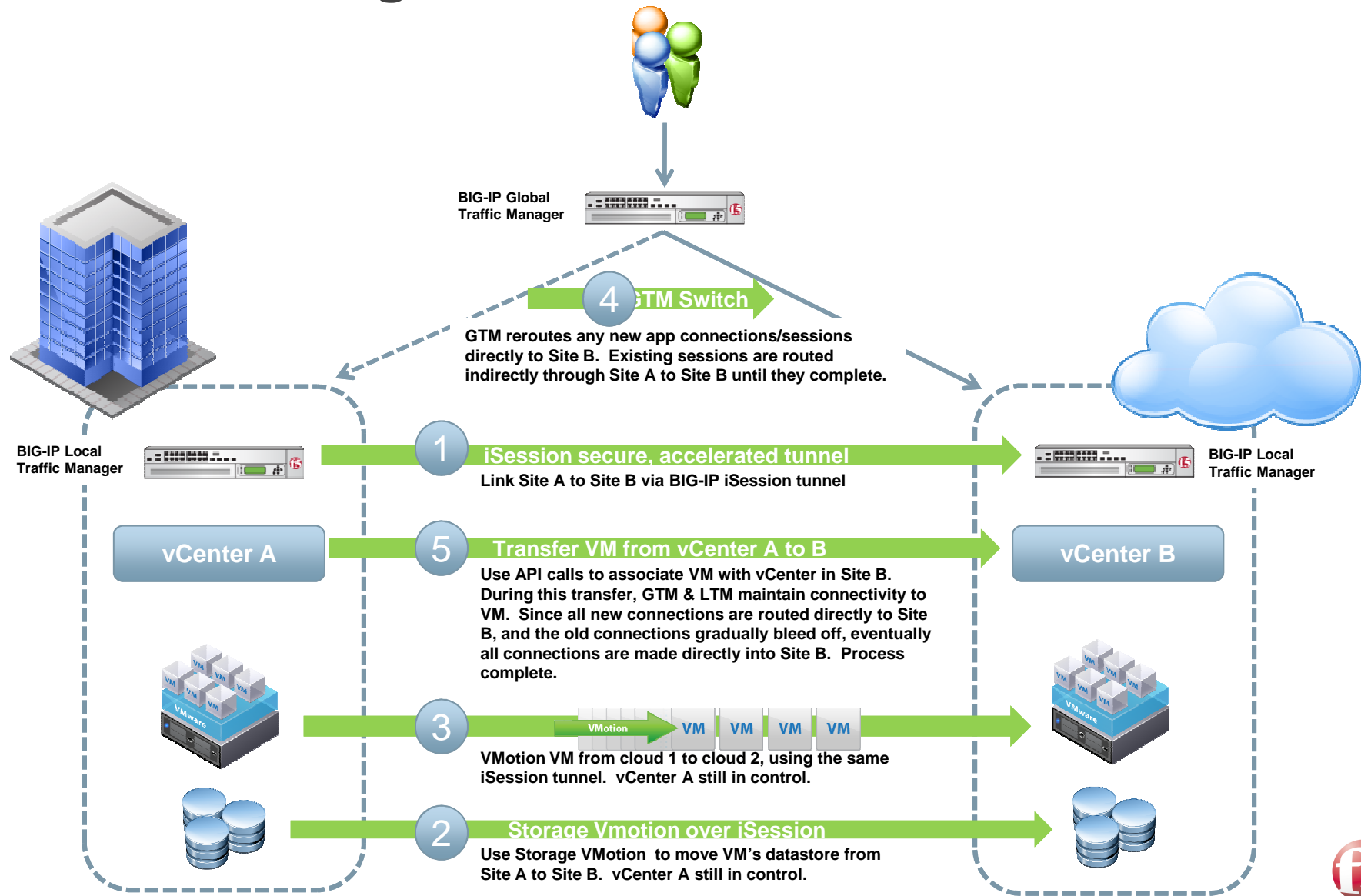
Asegurar la disponibilidad geográfica



Rendimiento y escalabilidad de VMWARE VDM



Vmotion Long Distance



best practices · blog · browser
code · content · cookie · persis
data center · decryption · denial o
dynamic infrastructure
bal · green IT · hardware · HTT
n detection · IPsec · IPv6 · iRules
open source · optimization

Autoaprovionado



IT agility. Your way.

Autoaprovisionamiento

- Usamos la funcionalidad de iControl
- Interconexion del Virtual Center con el BIG-IP
- Replicación automática de Servidores on demand
- Aprovisionamiento del BIG-IP con los nuevos servers



Datacenter Adaptativo

Demanda +clientes

Detección

Automatización

Provisión VMs

Provisión F5

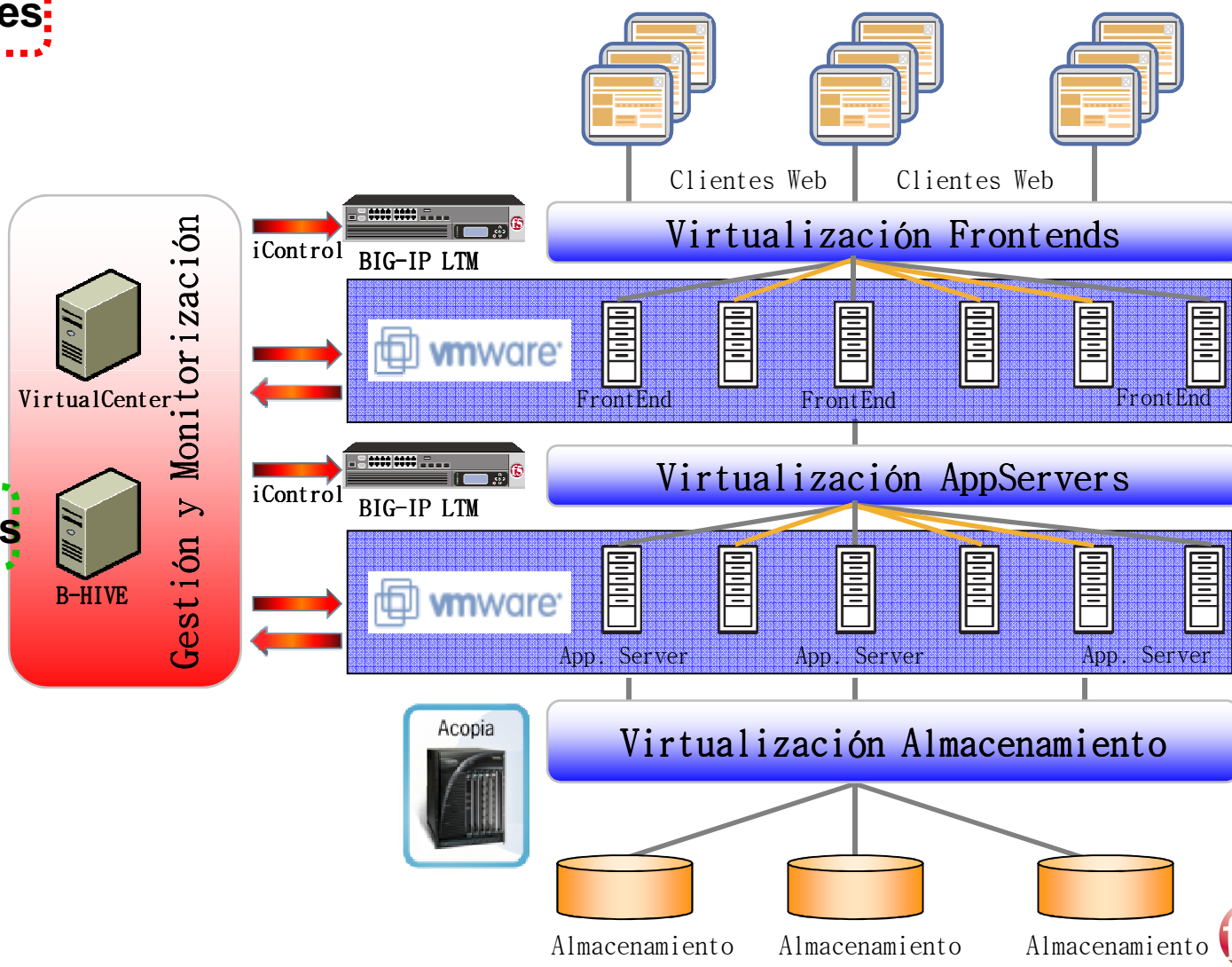
Demanda -clientes

Detección

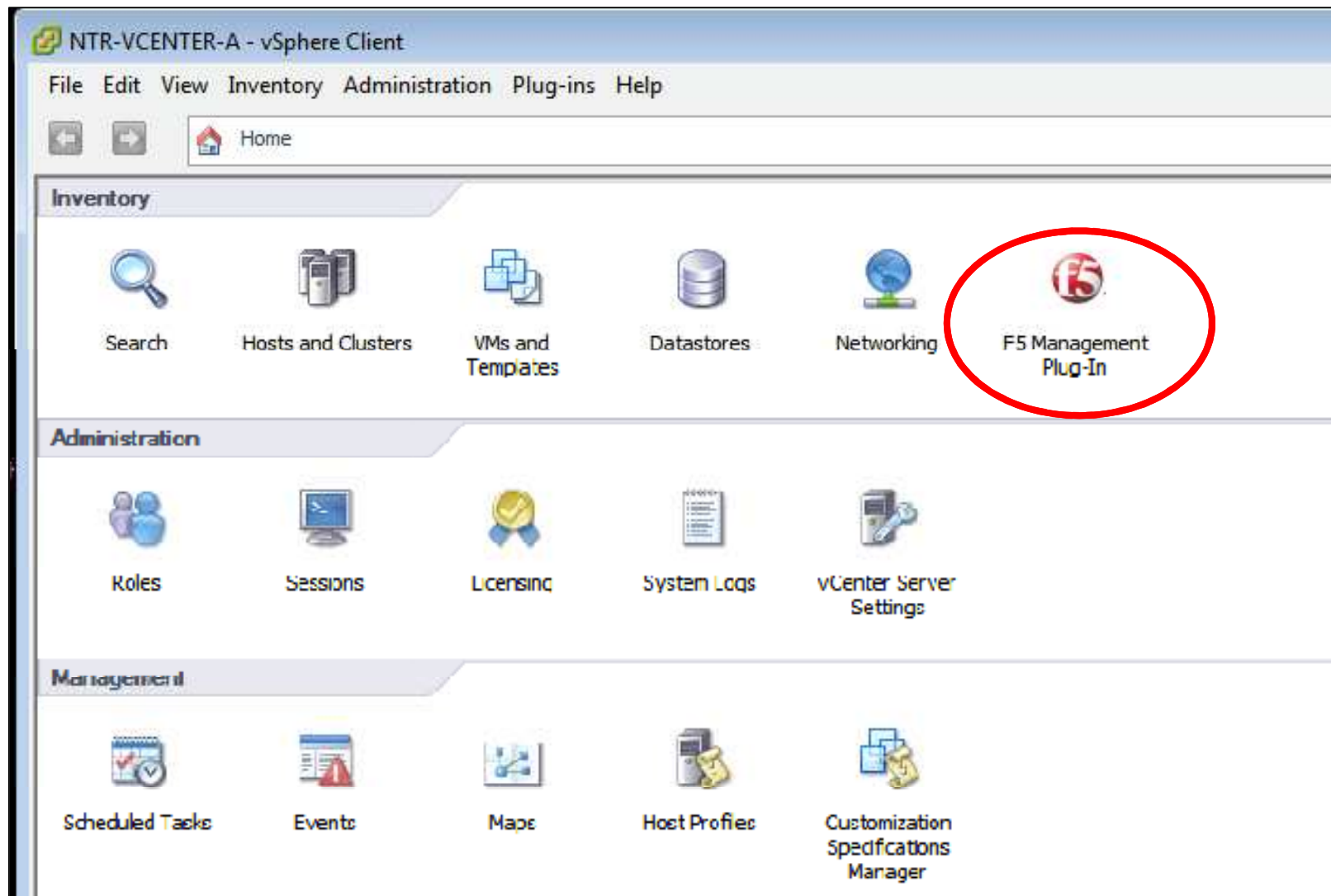
Automatización

Desprovisión F5

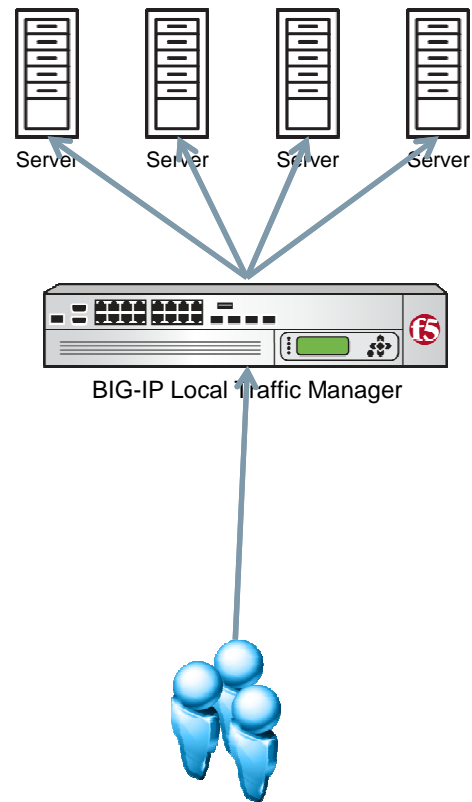
Desprovisión VMs



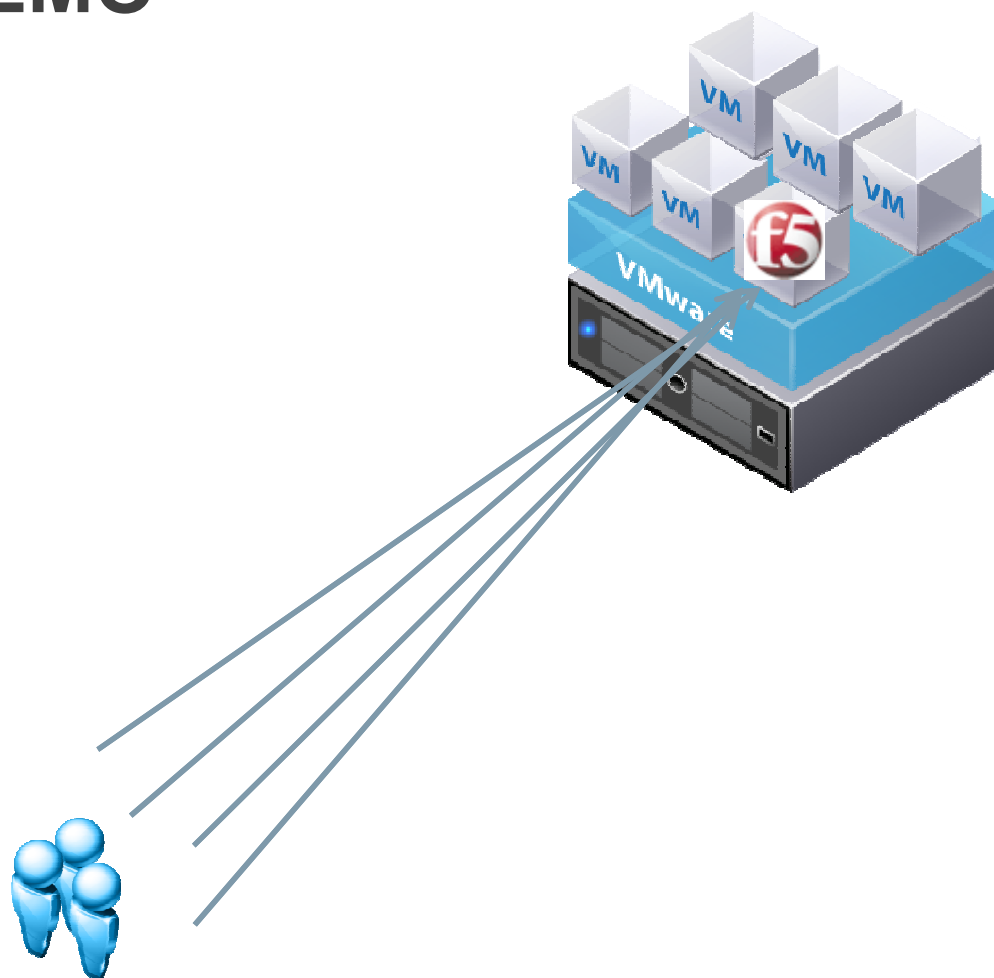
Integrado en el Gui del vSphere



DEMO



DEMO





®

IT agility. Your way.

Metro vMotion

- Customer Challenge
 - Disaster Avoidance or Disaster Recovery, Data Center Maintenance, Capacity Planning
 - Migration of live Virtual Machines across data centers
 - Previously (vSphere 5) only migration within a data center was supported (5 ms latency or less)
 - Migration of large amount of associated storage challenging
- Alternative Approaches
 - Expensive low-latency, high-bandwidth connection
 - Other vendor solutions at much higher cost and very limited distance
- F5 Solution
 - F5 GTM, LTM, and WOM provide accelerated, global connectivity to ensure long-distance live migration at higher latencies
 - EMC VPLEX Metro provides synchronous active/active data replication (eliminating need for Storage vMotion event)
 - vSphere 5 supporting higher latencies (10 ms or less)



iApp for VMware View

- Customer Challenge
 - Implementation and configuration of network centric settings
 - Manual configuration time consuming & prone to mistakes
 - Changes difficult to manage across multi data center
- Alternative Approaches
 - None
- F5 Solution
 - F5 v11 provides iApp framework for rapid deployment of application centric environments
 - iApp for VMware View implements F5 Deployment Guide
 - Configuration takes minutes instead of hours
 - Errors are minimized / eliminated
 - Changes can easily be replicated across multi data center deployments



Single Namespace for VMware View

- Customer Challenge
 - Connecting end users to preferred data center location
 - Based on geographical location (lowest latency)
 - Based on business unit or customer
- Alternative Approaches
 - Manual configuration and maintenance of multiple namespaces
- F5 Solution
 - F5 GTM, LTM, and APM work in concert to provide a Single Namespace solution for VMware View
 - For example, <https://mydesktop.example.com>
 - Users are automatically connected to the preferred data center
 - Authentication & Authorization policies are automatically applied
 - No manual configuration of multiple namespaces

