

Esquema de conexiones

ESX1		switch1	switch2
NIC	CONEXIÓN	Puerto	Puerto
VMNIC0	LAN	10	
VMNIC1	ISCSI1	1	
VMNIC2	ISCSI2		1
VMNIC3	DMZ2	15	
VMNIC4	LAN2		10
VMNIC5	DMZ1		14

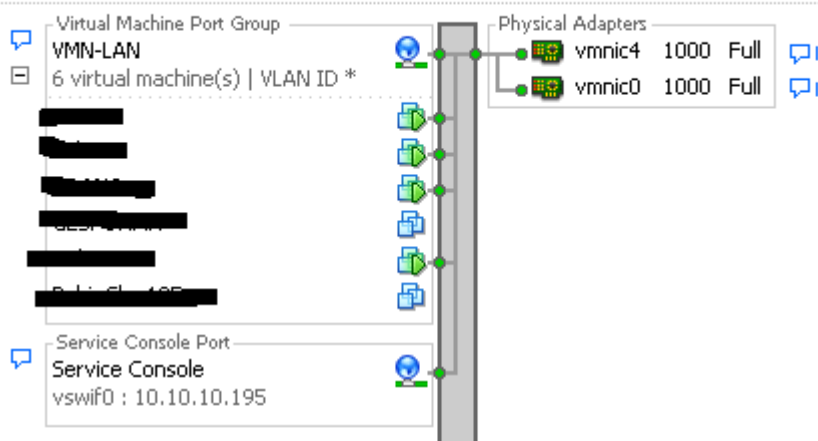
ESX2		switch1	switch2
NIC	CONEXIÓN	Puerto	Puerto
VMNIC0	LAN	9	
VMNIC1	ISCSI1	6	
VMNIC2	ISCSI2		6
VMNIC3	DMZ2	14	
VMNIC4	LAN2		8
VMNIC5	DMZ1		12

Network Adapters

Device	Speed	Configured	vSwitch	Observed IP ranges	Wake on LAN Supported
Intel(R) Gigabit VT Quad Port Server Adapter					
vmnic5	1000 Full	Negotiate	vSwitch3	169.254.98.153-169.254...	No
vmnic3	down	Negotiate	vSwitch3		No
vmnic4	1000 Full	Negotiate	vSwitch0	10.10.10.1-10.10.10.127	No
vmnic0	1000 Full	Negotiate	vSwitch0	10.10.10.1-10.10.10.127	No
Broadcom NetXtreme II BCM5708 1000Base-T					
vmnic2	1000 Full	Negotiate	vSwitch2	0.0.0.1-255.255.255.254	Yes
vmnic1	1000 Full	Negotiate	vSwitch1	0.0.0.1-255.255.255.254	Yes

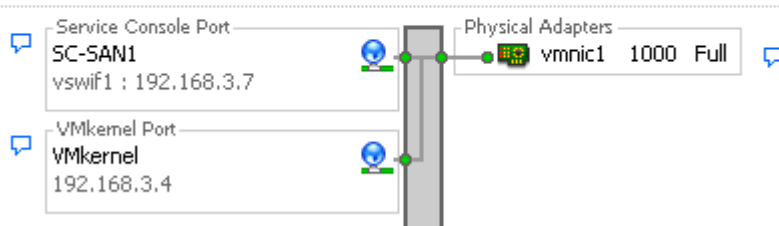
Virtual Switch: vSwitch0

[Remove...](#) [Properties...](#)



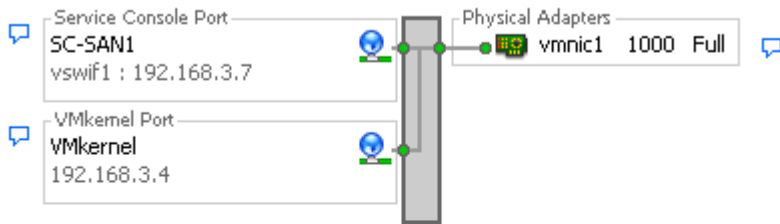
Virtual Switch: vSwitch1

[Remove...](#) [Properties...](#)



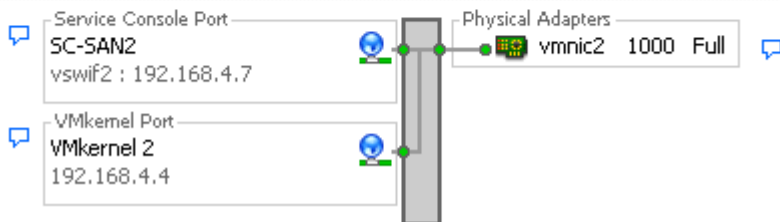
Virtual Switch: vSwitch1

[Remove...](#) [Properties...](#)



Virtual Switch: vSwitch2

[Remove...](#) [Properties...](#)



vSwitch0 Properties

Ports: **Network Adapters**

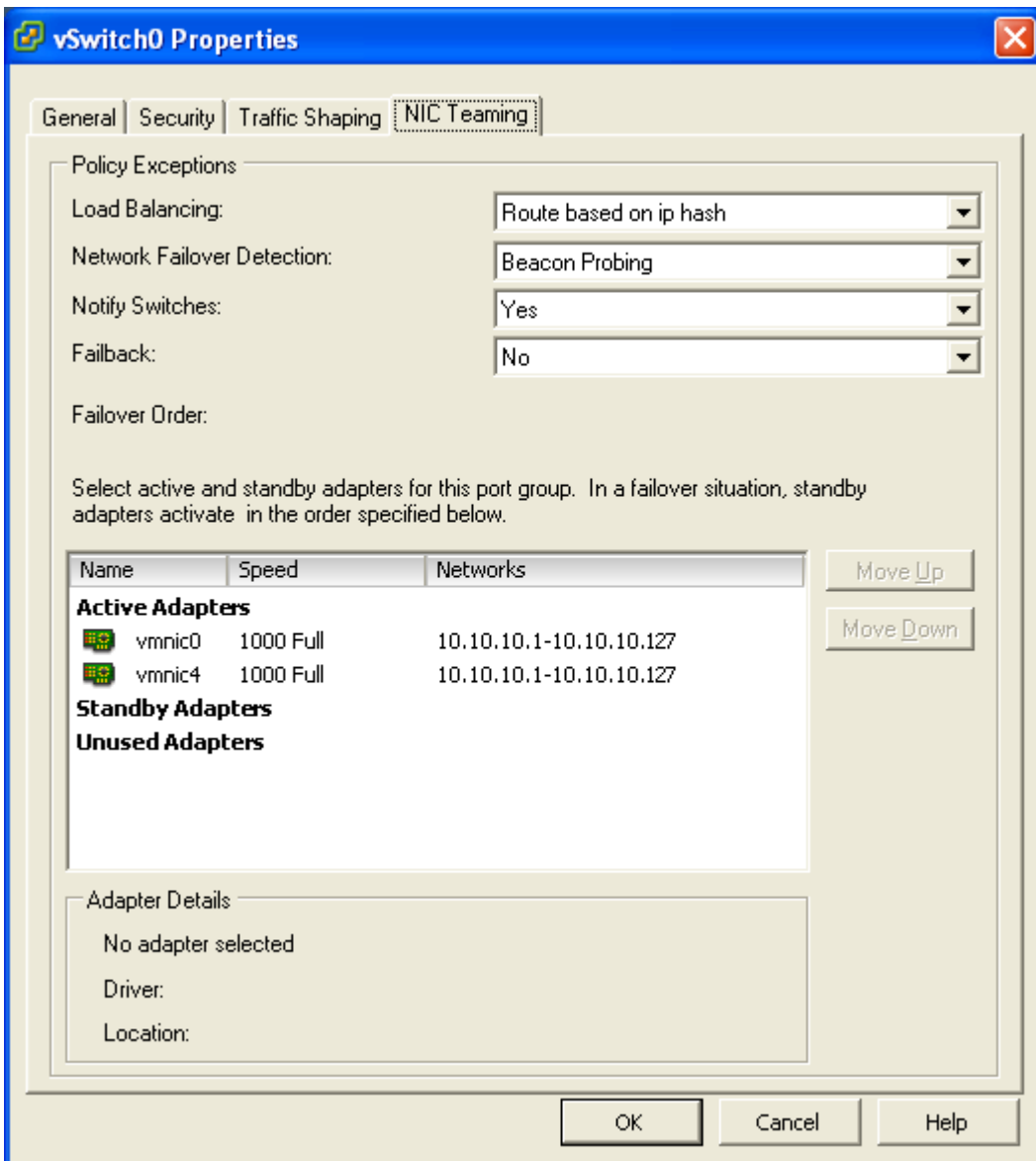
Network Adapter	Speed	Observed...
vmnic4	1000 Full	10.10.10...
vmnic0	1000 Full	10.10.10...

Adapter Details
Intel Corporation Intel(R) Gigabit VT Quad Port Server Adapter
Location: PCI 0f:00.0
Driver: igb

Status
Link Status: Connected
Configured Speed, Duplex: Autonegotiate
Actual Speed, Duplex: 1000 Mb, Full Duplex
Networks: 10.10.10.1-10.10.10.127

[Add...](#) [Edit...](#) [Remove](#)

[Close](#) [Help](#)



En los Switches:

Jumbo Frames

Attribute	Current	After Power Cycle
Jumbo Frames	Enable	Enable

Apply Changes