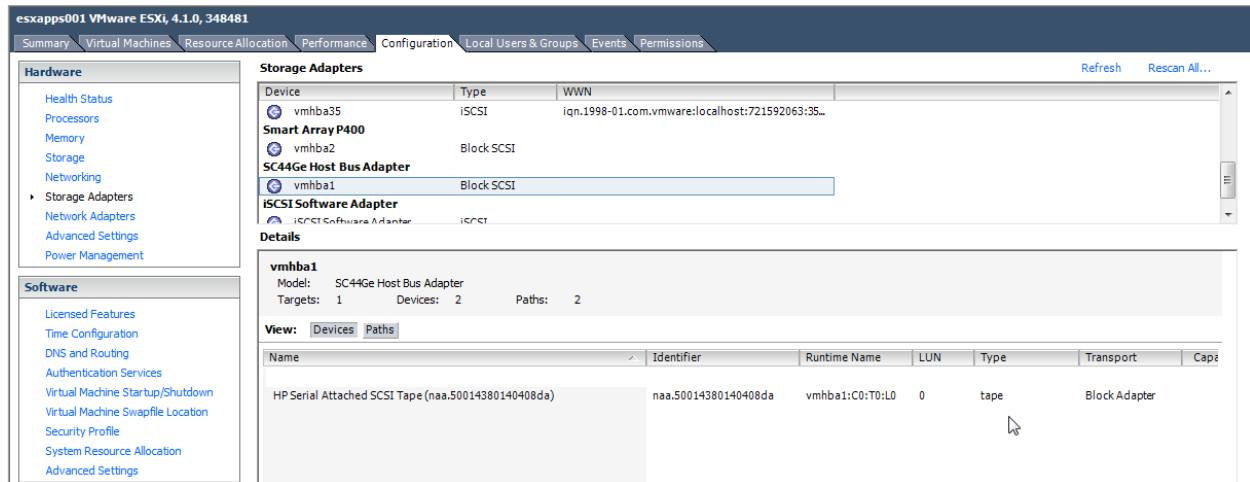


Enable SAS Tape Library Support on ESXi 4.1. It is advisable to shut down all hosts and disable auto start. If you are physically adding the HBA a minimum of two host reboots will be required.

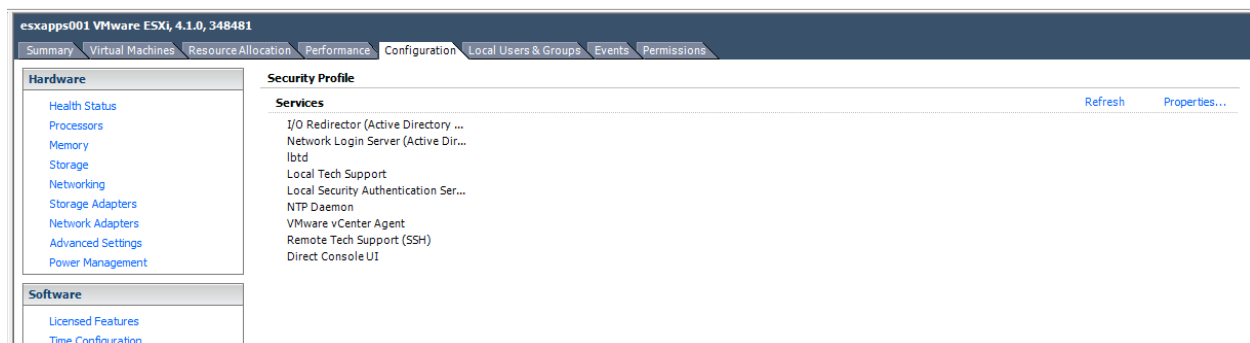
As best I can tell this is not officially supported and even if it works it might not perform as expected. This setup occurred on a HP DL385 G5p with a SC44ge HBA and a Overland Neo 400s Tape Library.

Connect tape library to via dedicated HBA. Do not share HBA with disks.

Verify that the HBA and Tape drive are visible in vSphere



Verify that Remote Tech Support Access, is enabled and SSH to the server. (Or go to the local console and enter tech support mode) Remote tech support can be turned on here. (Click on Properties to start service)



From the SSH console enter the following. Locate your HBA in the list.

```
esxcfg-scsidevs -a
```

```
~ # esxcfg-scsidevs -a
```

```
vmhba38 sata_svw          link-n/a  sata.vmhba38
(0:1:14.0) ServerWorks BCM5785 [HT1000] SATA (Native SATA Mode)
```

```

vmhba0  sata_svw          link-n/a  sata.vmhba0
(0:1:14.0) ServerWorks BCM5785 [HT1000] SATA (Native SATA Mode)

vmhba1  cciss             link-n/a  block.cciss/c0d2:0
(0:72:0.0) Hewlett-Packard Company Smart Array P400

vmhba2  mptsas           link-n/a  sas.500605b0018e62d0
(0:66:0.0) LSI Logic / Symbios Logic SC44Ge Host Bus Adapter

vmhba32 bnx2i             unbound  iscsi.vmhba32
Broadcom iSCSI Adapter

vmhba33 bnx2i             unbound  iscsi.vmhba33
Broadcom iSCSI Adapter

vmhba34 bnx2i             unbound  iscsi.vmhba34
Broadcom iSCSI Adapter

vmhba35 bnx2i             unbound  iscsi.vmhba35
Broadcom iSCSI Adapter

vmhba36 sata_svw          link-n/a  sata.vmhba36
(0:1:14.0) ServerWorks BCM5785 [HT1000] SATA (Native SATA Mode)

vmhba37 sata_svw          link-n/a  sata.vmhba37
(0:1:14.0) ServerWorks BCM5785 [HT1000] SATA (Native SATA Mode)

```

On my system the HBA was *vmhba2 mptsas link-n/a sas.500605b0018e62d0 (0:66:0.0)*
LSI Logic / Symbios Logic SC44Ge Host Bus Adapter.

The item after the HBA name is the driver. Use that driver name and enter the following command. Fill in the correct driver for your system. The phrase in the parenthesis is a description only, it has no effect on the command. Do NOT omit the quotes on both ends.

```

esxcli nmp satp addrule --satp VMW_SATP_LOCAL --driver="mptsas"
--description="LSI Logic/Symbios Logic SC44Ge Host Bus Adapter"

```

This is a small font to simplify coping. The break between the quotes in the description can be joined together, spaces are not important in the description.

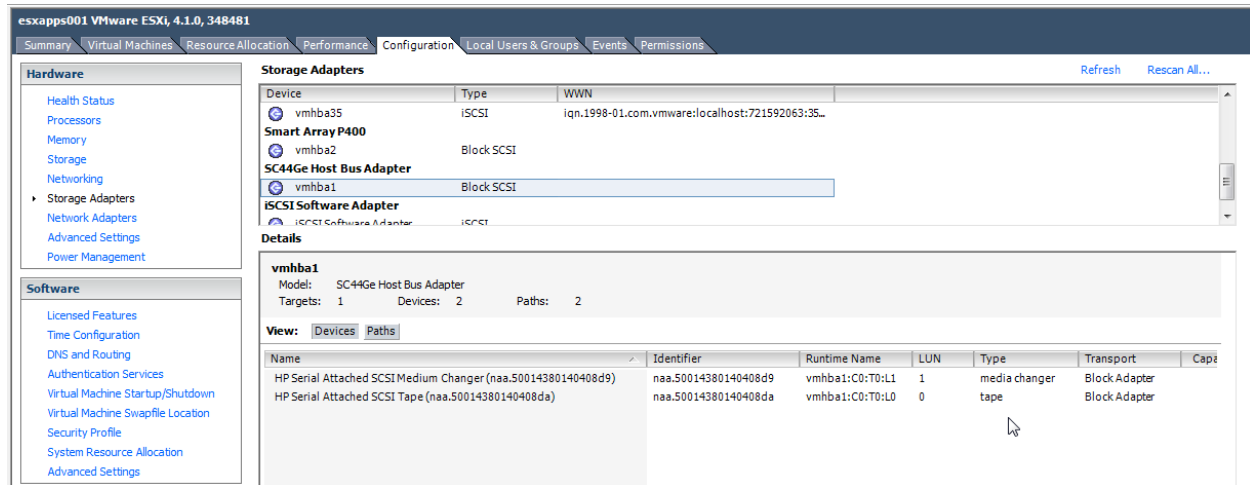
```

esxcli nmp satp addrule --satp VMW_SATP_LOCAL --driver="mptsas" --description="LSI Logic/Symbios
Logic SC44Ge Host Bus Adapter"

```

Reboot the ESXi host.

Confirm that the tape library is visible in ESXi.



Take note of the LUN and the Runtime name for each device. Pay attention to the value of T

On this system they are

vmhba1:C0:T0:L0 Tape

vmhba1:C0:T1:L1 Media Changer

From a ssh session the connectivity can also be verified with the following command. On my system I see the library and the tape.

esxcfg-scsidevs -l | grep -i vendor

```
~ # esxcfg-scsidevs -l | grep -i vendor
```

```
Vendor: VMware      Model: Block device    Revis: 1.0
```

```
Vendor: VMware      Model: Block device    Revis: 1.0
```

```
Vendor: VMware      Model: Block device    Revis: 1.0
```

```
Vendor: HP           Model: MSL G3 Series    Revis: G.33
```

```
Vendor: HP           Model: Ultrium 4-SCSI   Revis: U55W
```

```
~ #
```

Now it is time to add the library and the tape changer to the host. Please remember that the library and tape can only be added to a single VM.

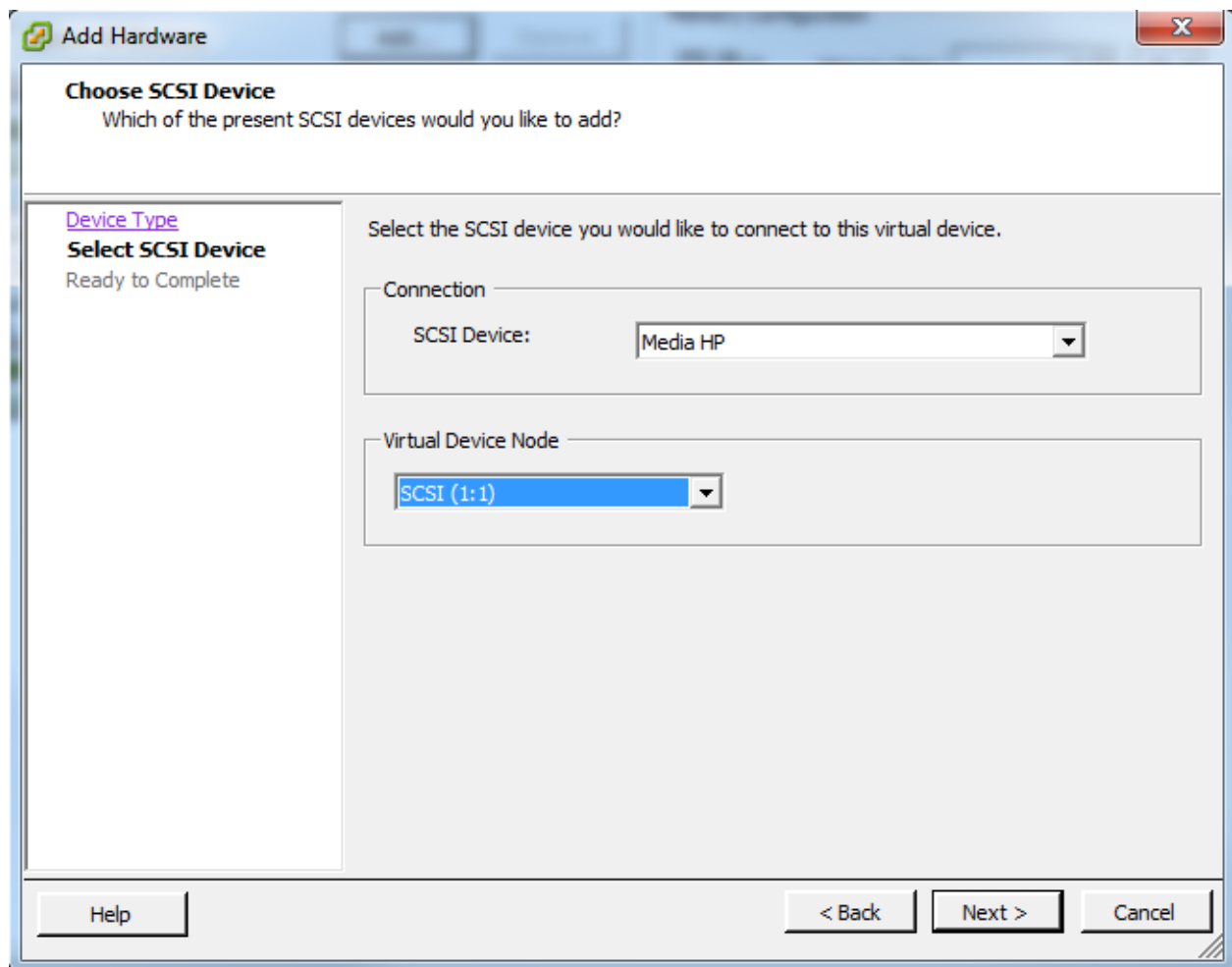
Edit the settings of the target VM

Click Add

Select SCSI Device (If you do not see SCSI Device then something went wrong in a earlier step)

I will add the library first, it shows up on my system as media HP.

Select the library for the SCSI Device and then select a SCSI id DO NOT USE SCSI (0:x) Use SCSI (1:1) The second number must match the Target from the earlier step. In my case it was vmhba1:C0:T1:L1

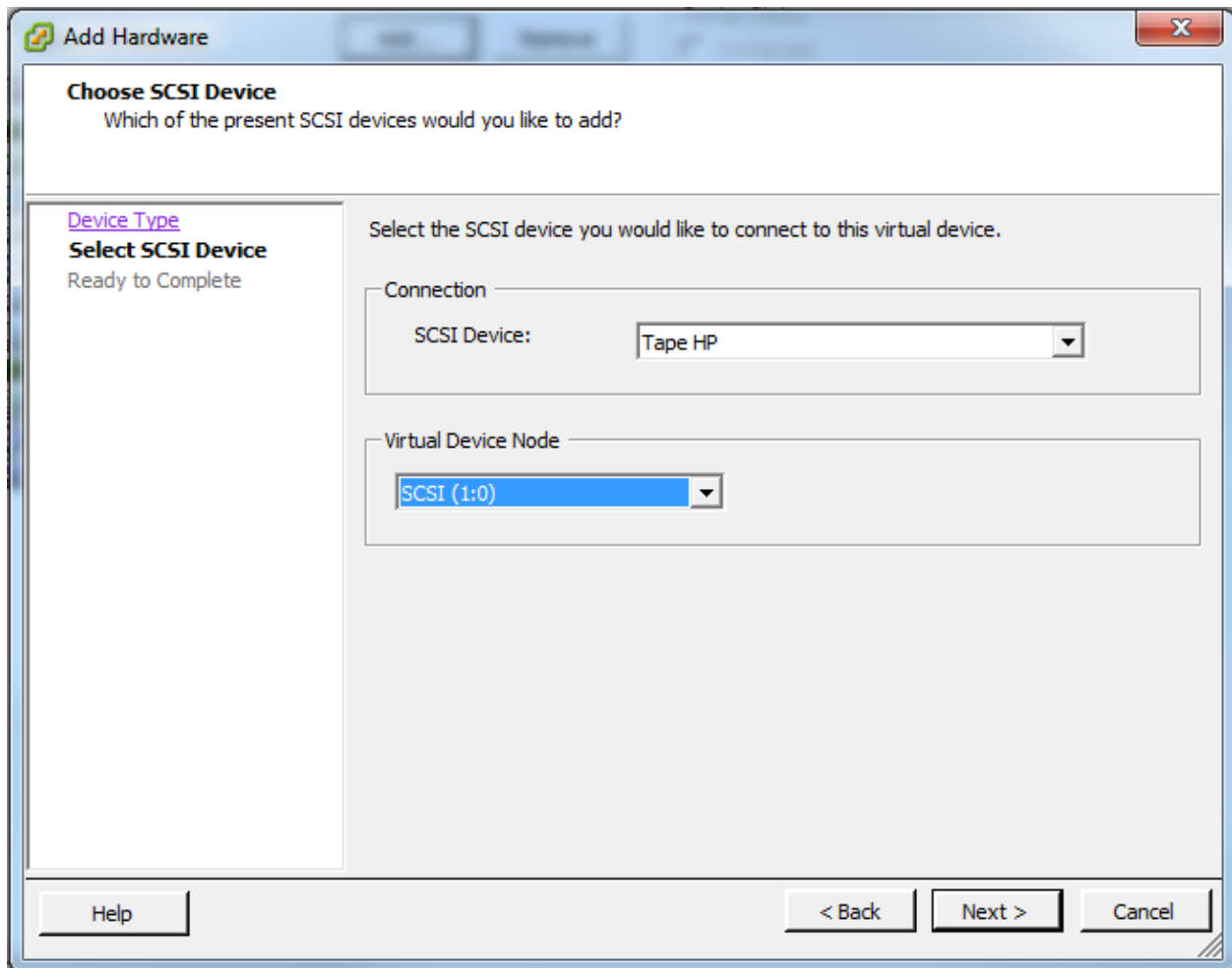


Now to add the tape

Click Add

The tape shows up on my system as Tape HP.

Select the tape for the SCSI device and then select a SCSI id DO NOT USE SCSI (0:x) Use SCSI (1:0) The second number must match the Target from the earlier step. In my case it was vmhba1:C0:T0:L1



Save your changes and power on the virtual machine. If all went well you should see the tape and the library on the system.

