

# How to share between the host drive and ...

---



[Steven89](#) 6 posts since

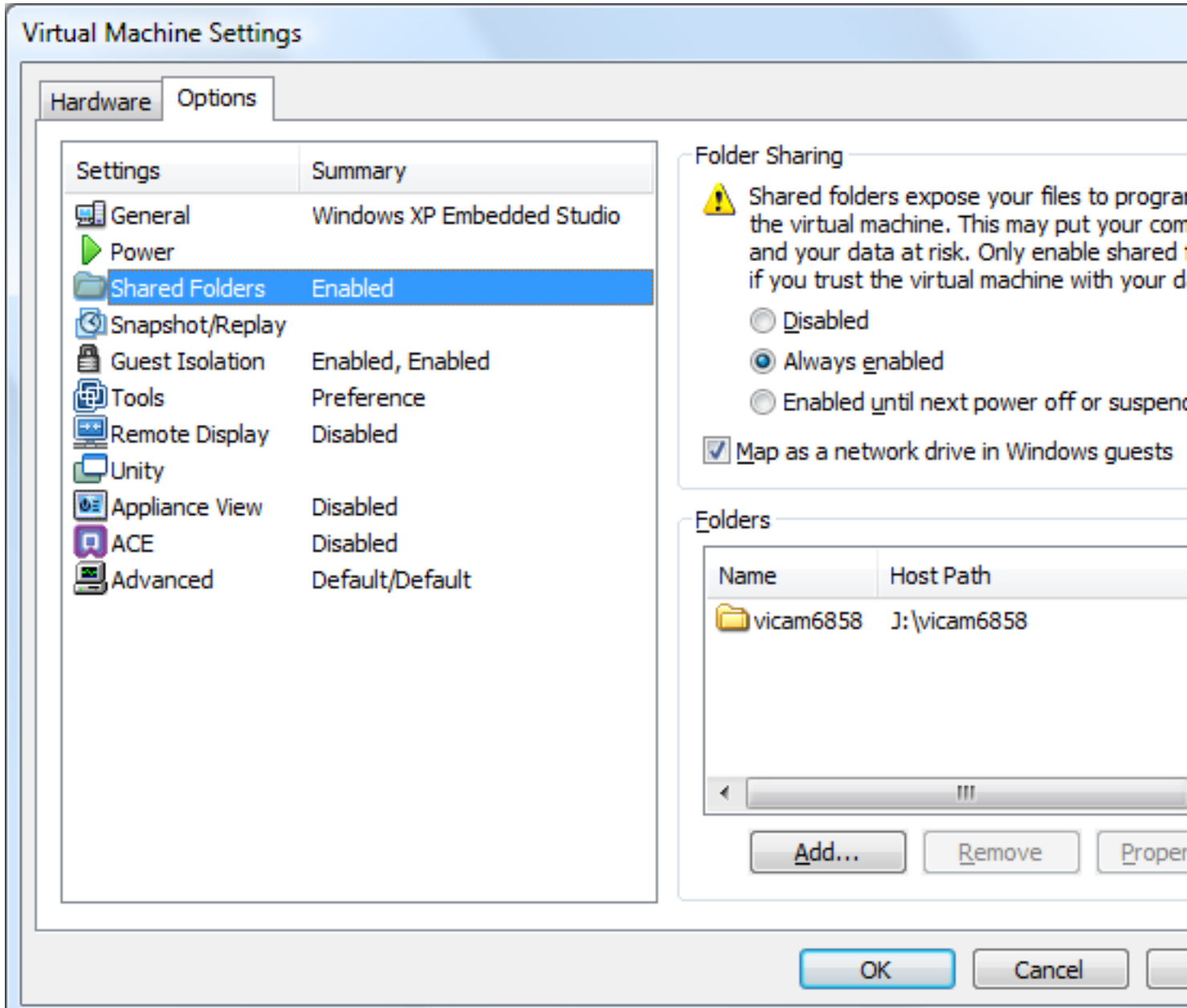
Jun 27, 2009 I wanted to use my virtual XP to print using my old printer which the printer's driver only can support XP. But i can't find a way to link my host and virtual drive, because my file is in the host drive.



[Penic Albin](#) 121 posts since

Oct 22, 2007 **1. Re: How to share between the host drive and virtual machine drive?** Jun 27, 2009 7:02 AM

1. Edit Virtual machine settings
2. Go to Options tab
3. Select Shared folders
4. Select Always enabled
5. Add folder you wish to use
6. Select Map as network drive in Windows guest



If you find this information useful, please award points for "correct" or "helpful".