

# USB devices don't connect on any OSX/SP ...



[nerdboy777](#) 2 posts since

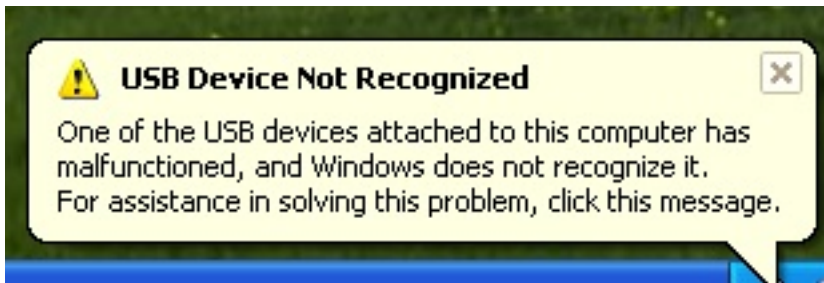
Oct 9, 2008 I'm having a lot of trouble with version 2.0 of VMware fusion and usb devices. No matter which windows OS or service pack I keep getting the following errors. It doesn't matter which kind of device I use.

I'm using Fusion Version 2.0 (116369)

I've tried enabling and disabling USB 2.0 etc.

There is no hub involved

The devices all work fine in bootcamp.



When I click on the dialog it lists the usb devies as a 7 port hub

I've enabled logging and included the log file

Machine Config:

Model Name: iMac

Model Identifier: iMac8,1



Processor Name: Intel Core 2 Duo

Processor Speed: 2.8 GHz

Memory: 4 GB

System Version: Mac OS X 10.5.5 (9F33)

#### Attachments:

- [vmware.log](#) (308.1 K)
-  [Picture 3.png](#) (33.3 K)
-  [pic1.jpg](#) (22.7 K)

Tags: fusion2.0, usb\_port



[etung](#) 11,086 posts since

Oct 15, 2006 1. **Re: USB devices don't connect on any OSX/SP Fusion 2.0** Oct 9, 2008 6:47 PM

USB devices don't connect on any OSX/SP ...

The dialog seems to be indicating a device attached to the hub, not the hub itself. Looking at the log, I think the device in question might be a virtual USB mouse, which we use in some circumstances (there is also a virtual USB hub, which is normal and expected and explains where the hub is coming from).

I assume this isn't a device you've explicitly tried to connect?

I assume this is XP? What versions have you tried? Is this a full retail version or some customized/OEM version?



[nerdboy777](#) 2 posts since

Oct 9, 2008 2. **Re: USB devices don't connect on any OSX/SP Fusion 2.0** Oct 9, 2008 9:43 PM

in response to: [etung](#) Thanks for the response.

Not sure what you mean by "I assume this isn't a device you've explicitly tried to connect?" I'm going with the stock settings in vmware, except for the trying to turn off USB 2.0. The device isn't recognized when I attach it. Strange thing is it works fine on a MacBook Pro with the same virtual container.

This is a full retail version of windows XP Pro. It also happens on a Vista clean install. Both with the latest updates and service packs.

The device that I'm connecting is a Garmin GPS that worked fine with this same virtual container on an older model iMac. It also doesn't work with my radar detector or a hard drive.

I've tried converting the container and a fresh install of XP with and without the service packs.

I do have an Apple BlueTooth mouse connected, working just fine.

I think I may have attached the wrong log here is the new one.

Thanks for any help you can provide.

Have a great day.



[Mark Bolick](#) 5 posts since

Feb 19, 2008 3. **Re: USB devices don't connect on any OSX/SP Fusion 2.0** Oct 10, 2008 8:41 AM

in response to: [nerdboy777](#)

We've also had issue with USB since upgrading to 2.0. We have a mailStation 2 from Pitney Bowes and it worked flawlessly in 1.1.3, but is terribly erratic in 2.0.

Half the time it will not register at all with 2.0. We've gotten the same USB error with it also. I've ended up changing USB ports, and adding a USB hub to try and get it to behave.

It's still a bit flakey. Our USB Zebra thermal printer for UPS worldship also has to be reinstalled everytime we reboot the virtual machine. Lots of USB issues with 2.0 it seems.



[etung](#) 11,086 posts since

Oct 15, 2006 4. **Re: USB devices don't connect on any OSX/SP Fusion 2.0** Dec 3, 2008 1:05 PM

in response to: [Mark Bolick](#) We've also had issue with USB since upgrading to 2.0. We have a mailStation 2 from Pitney Bowes and it worked flawlessly in 1.1.3, but is terribly erratic in 2.0.

USB devices don't connect on any OSX/SP ...

Half the time it will not register at all with 2.0. We've gotten the same USB error with it also. I've ended up changing USB ports, and adding a USB hub to try and get it to behave.

Can you get a USB log as in [Information Gathering for VMware Fusion?](#)

It's still a bit flakey. Our USB Zebra thermal printer for UPS worldship also has to be reinstalled everytime we reboot the virtual machine.

Do you have printing passthrough enabled in the virtual machine's settings? If so, try turning it off?